



Encap Seal™

PRODUCT DATA

What is Encap Seal?

Encap Seal is a cementitious and polymer based, integrally colored proprietary coating system, approved by the EPA, specially formulated to encapsulate lead-based paint and some forms of asbestos. The product's various properties (e.g., adhesion to substrates, impact resistance, compressive strengths, tensile strength and bridging abilities) make it an ideal alternative for both exterior and interior walls, ceiling or floor cladding applications. The aesthetic appearance of the finished application of the product can be tooled to almost any texture or consistency desired.

Applications

Another fine, green product distributed by:
Eco-\$mart, Inc.
(888) 329-2705 phone
(941) 377-9460 fx
info@eco-smart.com

Types of Application Uses

Encap seal may be used for interior and exterior applications over cementitious and non-cementitious substrates. Use as a permanent barrier for lead-based paint; Use as a water proofing material over concrete, masonry, and other substrates; Use to rebuild damaged and cracked stucco and masonry surfaces. Can be applied as a coating on drywall, tile, metal, vinyl, wood, polystyrene, and plastic surfaces. The product can be used for surface restoration and as a water repellent. Use in high traffic areas. It will strengthen weak or soft substrates.

Applications

Another fine, green product distributed by:
Eco-\$mart, Inc.
(888) 329-2705 phone
(941) 377-9460 fx
info@eco-smart.com

- Exterior Finishing
- Stucco Replacement
- Lead Based Paint Encapsulation
- Asbestos Encapsulation
- Brick Restoration
- Flooring Sealant
- Commercial Roofing
- Pool Sealant
- Marine Barriers



Colors

Another fine, green product distributed by:

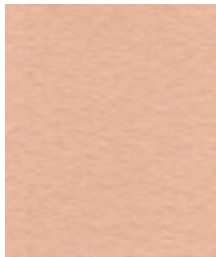
Eco-\$mart, Inc.

(888) 329-2705 phone

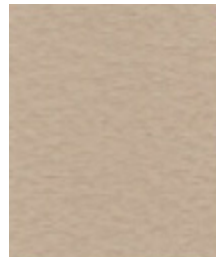
(941) 377-9460 fx

info@eco-smart.com

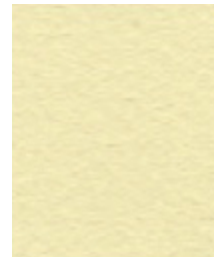
Encap Seal comes in 8 standard colors. All colors are factory blended to maintain consistency. Any color pallet can be obtained, darker pigments require a slight surcharge.



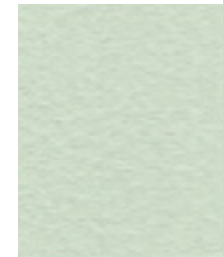
Coral



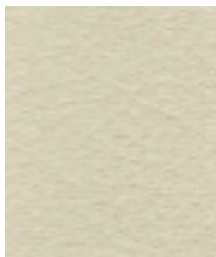
Brown



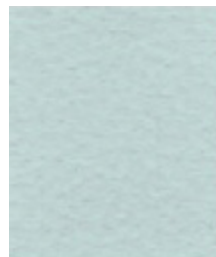
Cream



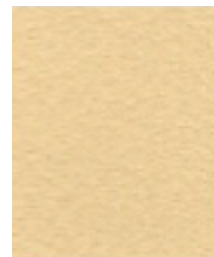
Mint Green



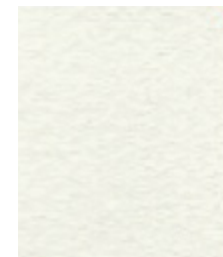
Pebble



Powder Blue



Sunset



White

Textures

Another fine, green product distributed by:

Eco-Smart, Inc.

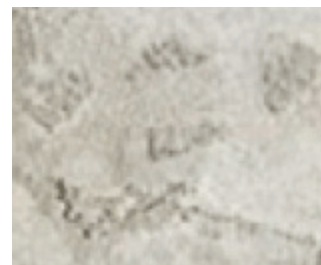
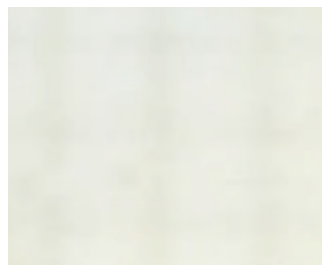
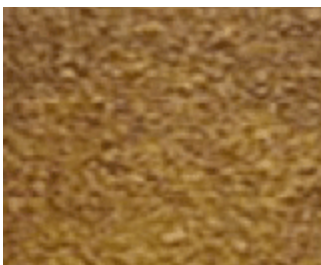
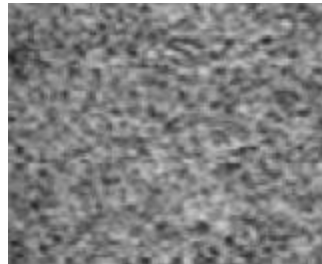
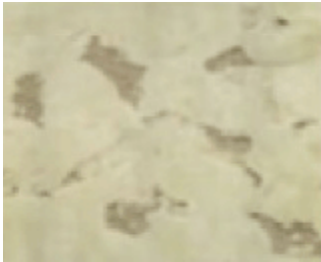
(888) 329-2705 phone

(941) 377-9460 fx

info@eco-smart.com

Coverage

Approximate coverage is 40 feet per bag to embed and coat the fiberglass fabric and to apply the final coat before the finish coat. For most applications, the substrate and method of application will determine the square foot coverage.



Mixing

Another fine, green product distributed by:
Eco-Smart, Inc.
(888) 329-2705 phone
(941) 377-9460 fx
info@eco-smart.com

Mixing

- Use a clean container, free from foreign materials such as petrochemical based products
- Use an electric drill mixer, approximately 400 to 700 RPM's. Be sure mixture is free of lumps
- Do not dilute polymer or add water to mixture. Do not add antifreeze, binders or accelerators to mixture at any time
- Mix measurements can vary depending on application, however the general rule for mixing is four (4) bags of powder for one (1) 5 gallon pail of liquid additive. Thus, one bag of powder to $\frac{1}{4}$ container of liquid.



Another fine, green product distributed by:

Eco-Smart, Inc.

(888) 329-2705 phone

(941) 377-9460 fx

info@eco-smart.com

Drying and Curing

Working Time:

Actual working time after application depends upon factors such as temperature and humidity. Work Time may be extended per manufacturer recommendations.

Drying and Curing:

Full strength is achieved in 28 days after application. Product wear can begin 48 hours after application. Encap seal will cure under damp or wet conditions. It's cured strength in 28 days is 4500 to 6000 psi.

Solubility:

Water soluble. Clean tools and spillage immediately after with water use. For safety precautions, first aid, and disposal see MSDS sheets.

Storage

Another fine, green product distributed by:

Eco-\$mart, Inc.

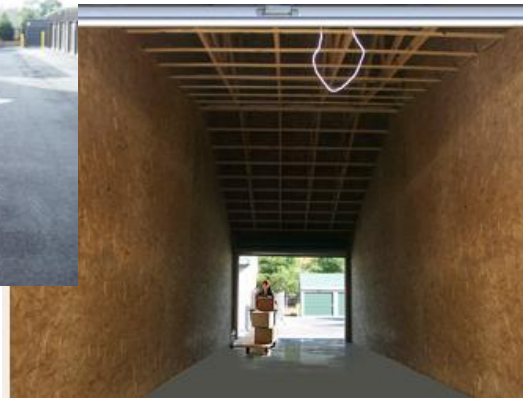
(888) 329-2705 phone

(941) 377-9460 fx

info@eco-smart.com

Storage

Encap Seal dry mix must be stored in a dry area with very low to no humidity for an unlimited shelf life. Encap bond may be stored in a closed container for an unlimited shelf life. Encap Mesh may be stored in a dry area for an unlimited period of time.



Technical Data

Another fine, green product distributed by:

Eco-Smart, Inc.
(888) 329-2705 phone
(941) 377-9460 fx
info@eco-smart.com

Test	Method	Results
Tensile Strength	ASTM C-780	530 psi (28 days)
Fire Test	ASTM E84-89a	Flame Spread Index 5 Smoke Developed Value 10
Compressive Strength	ASTM C-780	4500 psi (in 28 days)
Scrub Resistance	ASTM D2486-79	At 10,000 scrub cycles: No signs of deterioration or wear
Drying Shrinkage	ASTM C-1148	Of- 0.969% at 28 days
Impact Resistance	ASTM D2794	35 psi at 6 mills
Adhesive/Cohesive Strengths	ASTM D-4541	406 psi
Accelerated Weathering	ASTM G-26	No blistering, cracking, checking, adhesion loss or degradation
Water Intrusion	ASTM C-1601	Leakage .083 gals/hr. (<.375 gals/hr. considered excellent)
Chemical Resistance	ASTM D1308-81	No surface Deterioration
Water Vapor Transmission	ASTM E96-80	Avg. Water Vapor Transmission Rate: .0365 Grains/HR*FT**2 Avg. Permanence: 1.022 Perms

**** Vapor Permeability:** Encap Seal is impermeable to water in liquid form, but breathable to water vapor. Encap Seal is also impermeable to ultra violet light.

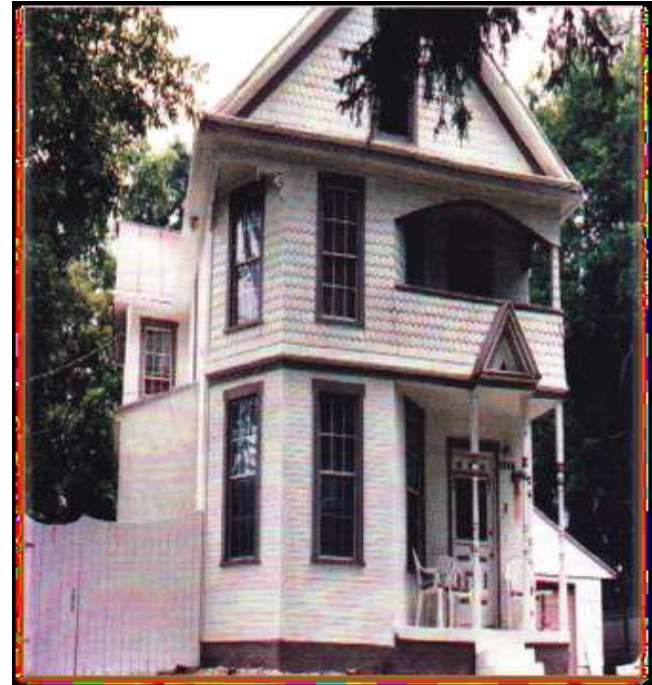
NAICS CODES:

236115, 236117, 236220, 237310, 238350,
238990, 238110, 238140, 238310, 238340, 238910,
321114, 337110, 321911, 332323, 541310, 541320,
561790, 561730, 541620, 562910.

Before and After

Another fine, green product distributed by:
Eco-Smart, Inc.
(888) 329-2705 phone
(941) 377-9460 fx
info@eco-smart.com

Lead Based Paint Encapsulation



Before and After

Another fine, green product distributed by:
Eco-\$mart, Inc.
(888) 329-2705 phone
(941) 377-9460 fx
info@eco-smart.com

Wall Repair



Before and After

Another fine, green product distributed by:

Eco-\$mart, Inc.

(888) 329-2705 phone

(941) 377-9460 fx

info@eco-smart.com

Brick Restoration



Before and After

Another fine, green product distributed by:

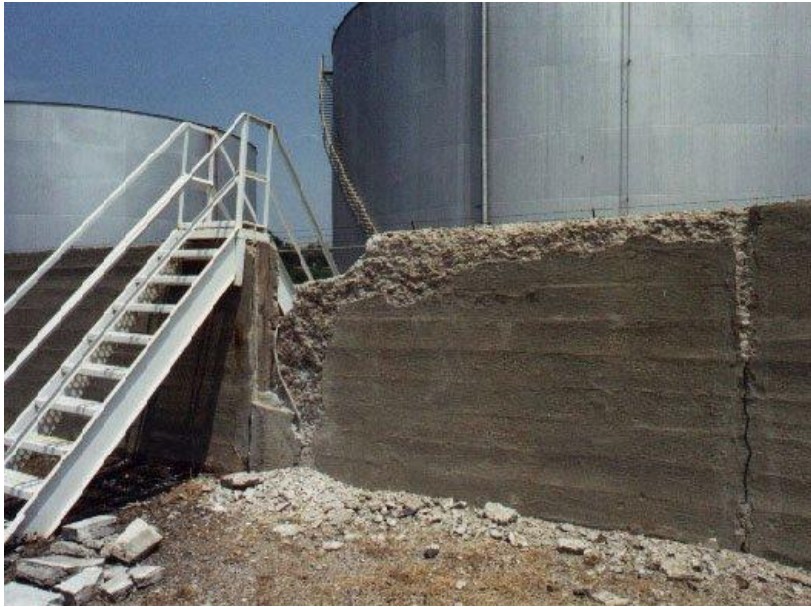
Eco-Smart, Inc.

(888) 329-2705 phone

(941) 377-9460 fx

info@eco-smart.com

Concrete Restoration



Before and After

Another fine, green product distributed by:
Eco-\$mart, Inc.
(888) 329-2705 phone
(941) 377-9460 fx
info@eco-smart.com

Stucco Repair/Restoration



Before and After

Another fine, green product distributed by:

Eco-Smart, Inc.

(888) 329-2705 phone

(941) 377-9460 fx

info@eco-smart.com

Pool Repair/Restoration



Before and After

Another fine, green product distributed by:
Eco-\$mart, Inc.
(888) 329-2705 phone
(941) 377-9460 fx
info@eco-smart.com

Roofing



Before and After

Another fine, green product distributed by:

Eco-\$mart, Inc.

(888) 329-2705 phone

(941) 377-9460 fx

info@eco-smart.com

Home/Apartment Encapsulation



Completed Projects

Another fine, green product distributed by:

Eco-Smart, Inc.

(888) 329-2705 phone

(941) 377-9460 fx

info@eco-smart.com

Chicago Housing Authority – Chicago, IL
Applegate Apartments – Fort Worth, TX
Marietta Housing Authority – Marietta, GA
Puerto Rico Housing Authority – San Juan, PR
Easter & Associates – Montgomery, AL
Daly Day Care Center – Tuskegee, AL
HSD Housing Division – Albuquerque, NM
Murphy Builders – Columbus, OH
Newtowne Court – Cambridge, MA
Highland Gardens – Somerville, MA
New Orleans Housing Authority – New Orleans, LA
Linden Lumber Company – Columbus, OH
Shell Oil Company – Cleveland, OH
Waterbury School – Waterbury, CT
New Housing Construction – St Thomas, Virgin Islands
Andros Island Naval Base – St Thomas, Virgin Islands
Solomon's Recreation Center – U.S. Navy Base, Maryland
Chagrin Falls Army Reserve – Chagrin Falls, OH
Redwood Development – Columbus, OH
Lockwood Gardens – Oakland, CA
Peralta Villa Projects – Oakland, CA
San Joaquin Housing Authority – San Joaquin, CA
Guardian Care Convalescent Home – Orlando, FL
Lake Eola Band Shell – Orlando, FL
Orlando Arena – Orlando, FL

Oakland Housing Authority – Oakland, CA
South Hampton Schools – Hampton, VA
Cleveland Housing Authority – Cleveland, OH
Varicorp – Cleveland, OH
Matrix, Inc. – Columbus, OH
Brocon Construction – Grove City, OH
Cannon Environmental – New Hampshire
Environmental – Delaware, OH
Denny's Restaurant – Indianapolis, IN
Highland County Community Action – Hillsbor, OH
Barbara Rosela Senior Center – Columbus, OH
Preferred Environmental – Louisville, KY
Michigan Housing Authority – Michigan City, MI
University of Central Florida – Orlando, FL
Bethune Cookman College – Daytona Beach, FL
Defense Supply Center – Columbus, OH
Ohio State University – Columbus, OH
Bob Carr Performing Arts Center – Orlando, FL
Oakley Construction – Nashville, TN
Oakridge High School – Orlando, FL
Norwell Freeland – Buckeye Lake, OH
Bronson Hall, Bethune Cookman – Daytona Beach
Joyner Hall, Bethune Cookman – Daytona Beach
White Hall, Bethune Cookman – Daytona Beach