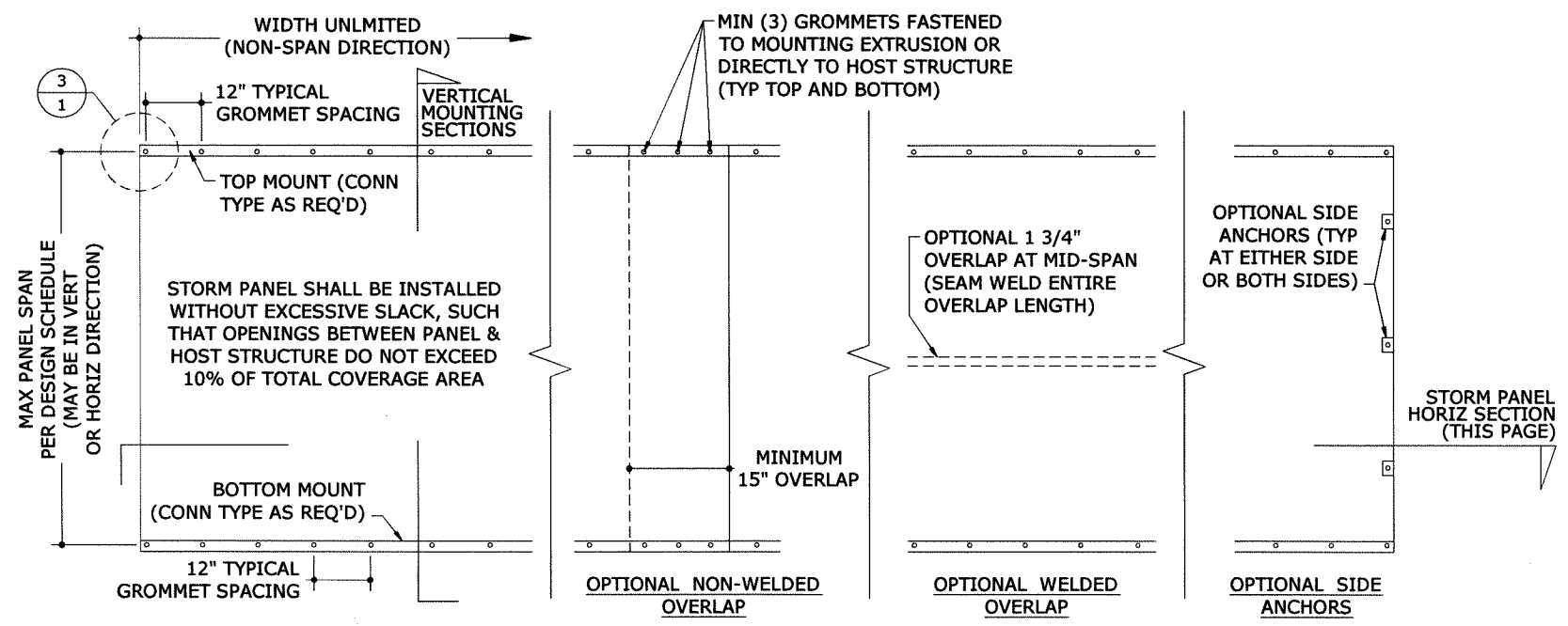
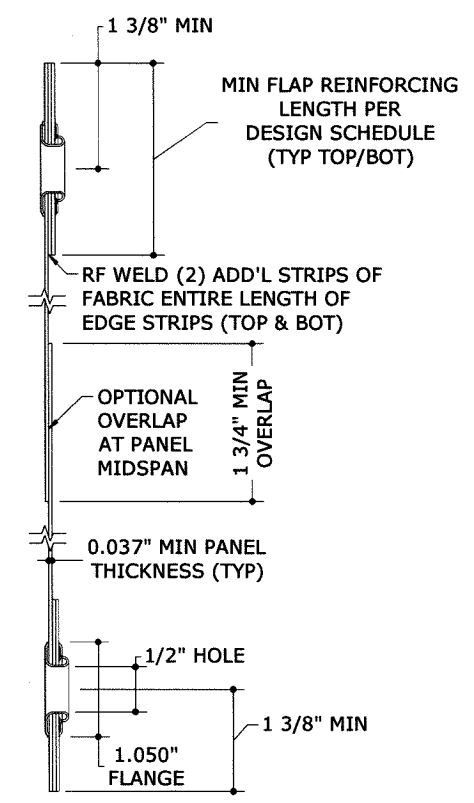


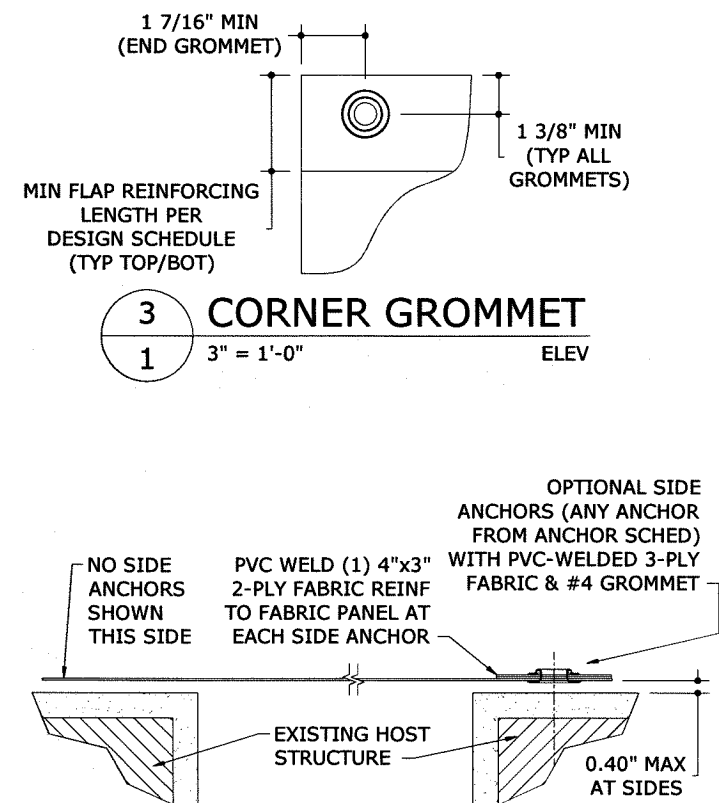
FABRIC-SHIELD™ STORM PANEL



1 TYPICAL VERTICAL MOUNT
1 N.T.S. ELEV



2 PANEL PROFILE
1 6" = 1'-0"



4 HORIZONTAL SECTION
1 N.T.S. HORIZ SECTION

3 CORNER GROMMET
1 3" = 1'-0" ELEV

DESIGN SCHEDULE:

MAX ALLOWABLE SPAN	MIN FLAP REINFORCING LENGTH	ALLOWABLE PRESSURES				DESIGN LOADS	
		DIRECT MOUNT		TRACK MOUNT		TENSION	SHEAR
108"	2-1/8"	+62 PSF	-66 PSF	+62 PSF	-60 PSF	308 LB/FT	627 LB/FT
76-1/4"	6-3/8"	+96 PSF	-96 PSF	-	-	305 LB/FT	479 LB/FT
61"	6-3/8"	+119 PSF	-119 PSF	-	-	302 LB/FT	407 LB/FT
39"	6-3/8"	+128 PSF	-128 PSF	-	-	209 LB/FT	418 LB/FT

NOTE: 9.25" MINIMUM ALLOWABLE WIDTH (NON-SPAN DIMENSION)
9.25" MINIMUM ALLOWABLE SPAN

SPAN NOTES:

1. ALLOWABLE PRESSURES SHALL NOT BE EXCEEDED.
2. PANEL SPANS LONGER THAN MAXIMUM NOTED ABOVE ARE NOT ACCEPTABLE.
3. PANEL SPANS LESS THAN MINIMUM NOTED ABOVE ARE NOT ACCEPTABLE.
4. NO SEPARATION FROM GLASS IS REQUIRED WHEN PANEL SPAN IS GREATER THAN MINIMUM SPAN NOTED ABOVE.
5. VALID FOR PANELS MOUNTED VERTICALLY OR HORIZONTALLY.

GLASS SEPARATION SCHEDULE:

SPANS UP TO	MINIMUM GLASS SEPARATION	
	INSTALLATIONS ≤ 30' ABOVE GRADE	INSTALLATIONS > 30' ABOVE GRADE
108"	21.0"	6.5"
76-1/4"	11.1"	3.1"
61"	11.1"	2.1"
39"	8.1"	1.2"

GLASS SEPARATION SCHEDULE NOTES:

1. GLASS SEPARATION SCHEDULE PROVIDES MINIMUM SEPARATION DISTANCE REQUIRED BETWEEN EXTERIOR FACE OF GLAZING (OR OTHER PRODUCT BEING PROTECTED) AND INTERIOR FACE OF INSTALLED STORM PANEL.
2. SEPARATION FROM GLASS IS REQUIRED ONLY WHEN INSTALLED WITHIN ASTM WIND ZONE 4 AND ESSENTIAL FACILITIES.

GENERAL NOTES:

1. THIS STORM PANEL SYSTEM HAS BEEN TESTED AND EVALUATED AS A LARGE MISSILE IMPACT PROTECTIVE SYSTEM IN ACCORDANCE WITH THE FLORIDA BUILDING CODE SIXTH EDITION (2017) AND THE INTERNATIONAL BUILDING/RESIDENTIAL CODE, FOR USE OUTSIDE FLORIDA'S HIGH VELOCITY HURRICANE ZONE (HVHZ) ONLY.
2. NO 33-1/3% INCREASE IN ALLOWABLE STRESS HAS BEEN USED IN THE DESIGN OF THIS PRODUCT. WIND LOAD DURATION FACTOR Cd=1.6 HAS BEEN USED FOR WOOD ANCHOR DESIGN.
3. POSITIVE AND NEGATIVE DESIGN PRESSURES CALCULATED FOR USE WITH THIS SYSTEM SHALL BE DETERMINED BY OTHERS ON A JOB-SPECIFIC BASIS IN ACCORDANCE WITH THE GOVERNING CODE. SITE-SPECIFIC PRESSURE REQUIREMENTS AS DETERMINED IN ACCORDANCE WITH ASCE 7-10 AND SECTION 1609 OF THE FLORIDA BUILDING CODE SIXTH EDITION (2017) SHALL BE LESS THAN OR EQUAL TO THE POSITIVE OR NEGATIVE DESIGN PRESSURE CAPACITY VALUES LISTED HEREIN FOR ANY ASSEMBLY AS SHOWN.
4. DESIGN PRESSURES NOTED HEREIN ARE BASED ON MAXIMUM TESTED PRESSURES DIVIDED BY A 1.5 SAFETY FACTOR.
5. THE SHUTTER SYSTEM DETAILED HEREIN IS GENERIC AND DOES NOT PROVIDE INFORMATION FOR A SPECIFIC SITE. IF SITE CONDITIONS DEVIATE FROM THE CONDITIONS DETAILED HEREIN, A LICENSED ENGINEER OR REGISTERED ARCHITECT SHALL PREPARE SITE SPECIFIC DOCUMENTS TO BE USED IN CONJUNCTION WITH THIS DOCUMENT.
6. THE ADEQUACY OF THE EXISTING STRUCTURE TO WITHSTAND SUPERIMPOSED LOADS IS OUTSIDE THE SCOPE OF THIS CERTIFICATION AND SHALL BE VERIFIED BY OTHERS.
7. STORM PANELS SHALL BE PVC COATED WOVEN POLYESTER FABRIC (THICKNESS t=0.037") WITH A MIN. Fu=16.053 KSI.
8. PANELS SHALL BE PERMANENTLY LABELED WITH A MINIMUM OF ONE LABEL PER PANEL CONTAINING:
WAYNE-DALTON CORP.
PENSACOLA, FL
ASTM E330, E1886 & E1996
FLORIDA STATEWIDE APPROVAL NUMBER
9. PANELS MAY BE MOUNTED HORIZONTALLY WHERE APPLICABLE (i.e. WITH LINE OF ANCHORAGE IN VERTICAL DIRECTION).
10. PANELS MAY BE INSTALLED WITH OPTIONAL SIDE ANCHORS AS DEPICTED HEREIN, HOWEVER SYSTEM PERFORMANCE IS BASED ON TESTING WITHOUT SIDE ANCHORS. TESTS SHOW A FAILURE LOAD OF 987 LBS FOR THE #4 GROMMET AND 4"x3" 3-PLY PVC-WELDED FABRIC CONSTRUCTION AT EACH SIDE ANCHOR (ANCHOR NOT CONSIDERED).
11. ALL BOLTS & WASHERS SHALL BE ZINC COATED, GALVANIZED OR STAINLESS STEEL WITH A MINIMUM TENSILE STRENGTH OF 60 KSI.
12. ALL ACCEPTANCE CRITERIA HAVE BEEN MET FOR THIS SHUTTER AS A NON-POROUS SYSTEM, AS DEFINED IN ASTM E1996. IN KEEPING WITH THIS STANDARD WHEN INSTALLED OUTSIDE OF ASTM WIND ZONE 4 AND ESSENTIAL FACILITIES, NO MINIMUM SEPARATION FROM THE GLAZING BEING PROTECTED IS REQUIRED, AND BREAKING OF THIS GLAZING DOES NOT COMPROMISE THE BUILDING ENVELOPE.

FRANK L. BERNARDO, P.E.
PEO046549

08/10/2017

ENGINEERING EXPRESS
160 SW 12th AVENUE, #2106
DEERFIELD BEACH, FL 33442
PH: (954) 354-0660 FAX: (954) 354-0443
E: HELLO@ENGINEERINGEXPRESS.COM
CERT OF AUTH #9886
ENGINEERINGEXPRESS.COM

Wayne Dalton
A DIVISION OF OVERHEAD DOOR CORP.
3395 ADDISON DRIVE
PENSACOLA, FL 32514

FABRIC-SHIELD STORM PANEL
FLORIDA STATEWIDE APPROVAL #FL3227.1
NON-HVHZ APPROVED

REMARKS	DRWN	CHKD	DATE
INIT ISSUE	KL	FLB	12/10/09
2010 FBC	KL	FLB	12/15/11
REV 2014 FBC (09-WDF-0007)	RWN	CSL	02/04/15
REV 2017 FBC	LAO	FLB	08/08/17

THIS DOCUMENT IS THE PROPERTY OF ENGINEERING EXPRESS AND SHALL NOT BE REPRODUCED IN WHOLE OR PART WITHOUT WRITTEN CONSENT OF THE CERTIFYING ENGINEER. ALL ITEMS AND PARTS IDENTIFIED BY OTHER MARKINGS TO THIS DOCUMENT ARE NOT PERMITTED AND INVALID FOR CERTIFICATION.

COPYRIGHT ENGINEERING EXPRESS

14-2057

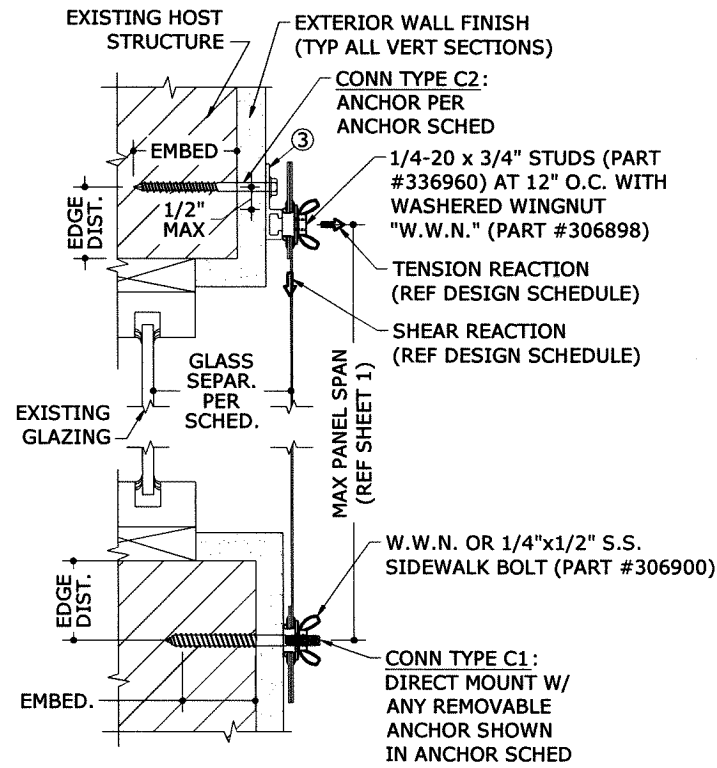
SCALE: -

PAGE DESCRIPTION:
WAYNE-DALTON PART #317477

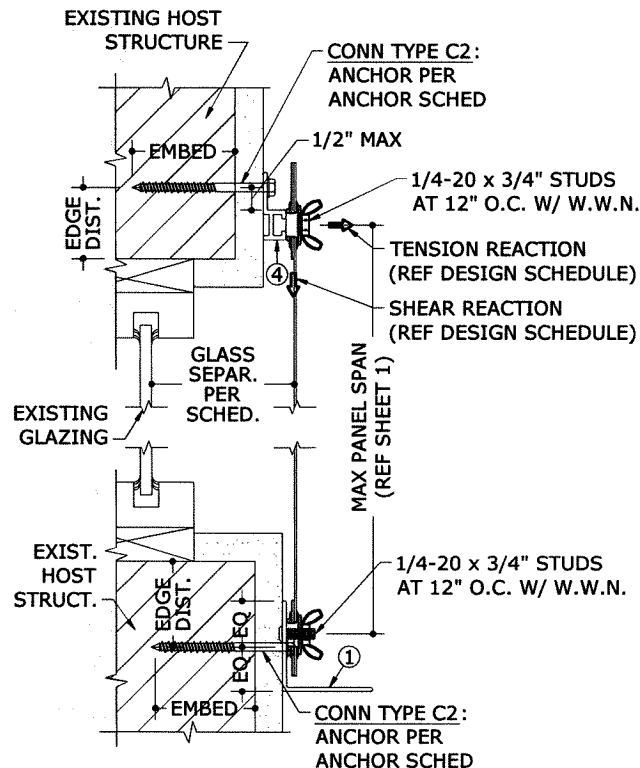
OF 4

V:\Projects\14-2057 FSA-Update FL3227.1 (09-WDF-0001)2014 FBC-Product Eval\WP\FBC Update 2017\14-2057b-Dwg-FL3227.1.dwg
 08/10/2017 - 10:41am iliso

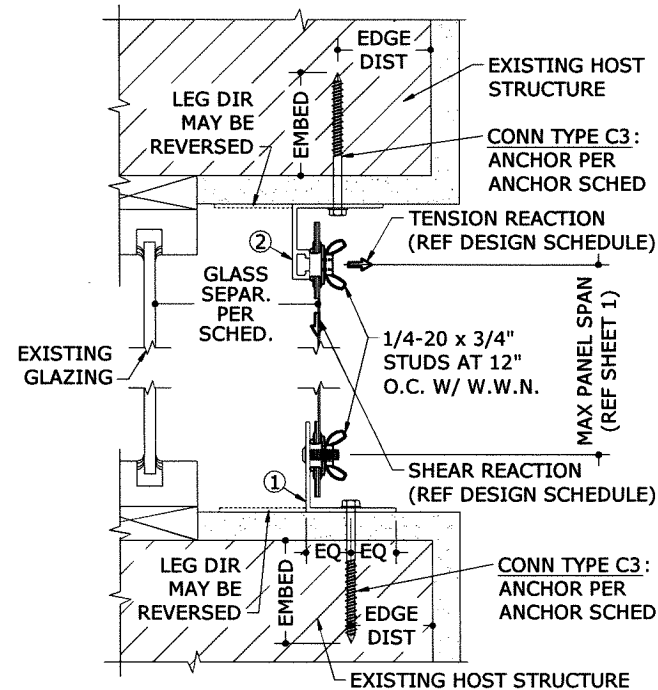
08/10/2017 - 10:41am luiso V:\Projects\14-2057 FSA-Update FL3227.1 (09-WDF-0001)2014 FBC-Product Eval\WDFBC Update 2017\14-2057B-Dwg-FL3227.1.dwg



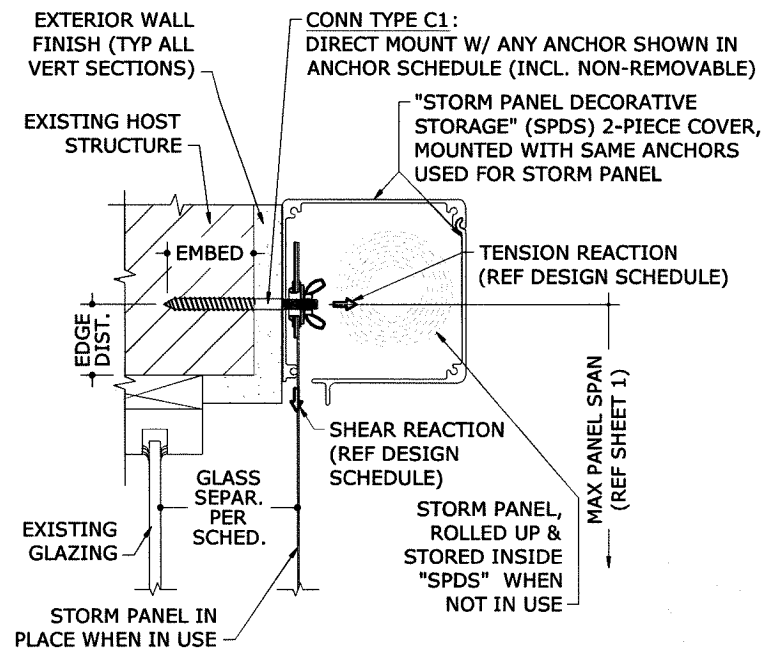
1 MOUNTING SECTION
3" = 1'-0" VERT SECTION



2 MOUNTING SECTION
3" = 1'-0" VERT SECTION



3 MOUNTING SECTION
3" = 1'-0" VERT SECTION



4 "SPDS" SECTION (OPTIONAL)
3" = 1'-0" VERT SECTION

ANCHOR SCHEDULE 1

HOST STRUCT.	ANCHOR	LOAD (psf)	3/4" MIN EDGE DISTANCE (UNLESS OTHERWISE NOTED)												
			Spans Up To 4'-0"			Spans Up To 6'-0"			Spans Up To 9'-0"						
			CONN TYPE	CONN TYPE	CONN TYPE	CONN TYPE	CONN TYPE	CONN TYPE	CONN TYPE	CONN TYPE	CONN TYPE				
WOOD (G=0.55)	1/4" LAG SCREW WITH MIN 2-3/32" THREAD PENETR.	38	10"	10"	3"	7"	7"	4"	4"	4"	4"	4"	4"	4"	4"
	1/4" TAPCON (ELCO OR S.S. ITW) OR 1/4" ELCO CRETE-FLEX OR #14 WOOD SCREW WITH 1-1/2" MIN THREAD PEN.	38	9"	9"	4"	6"	6"	3"	4"	4"	3"	3"	3"	3"	3"
	1/4" ITW TAPCON SG WITH 1-1/2" MIN EMBED	38	12"	12"	12"	11"	11"	12"	7"	7"	10"	10"	10"	10"	10"
	3/16" ITW SAMMY SUPER SCREW WITH 1-1/2" MIN EMBED	38	12"	12"	12"	12"	12"	12"	8"	8"	8"	8"	8"	8"	8"
	1/4" ELCO PANELMATE (MALE OR FEMALE) WITH 1-7/8" MIN EMBED	38	12"	12"	12"	12"	12"	12"	10"	10"	10"	10"	10"	10"	10"
	1/4" HANGER BOLT (MALE) W/ 2 1/2" MIN EMBED & 1 1/4" E.D.	38	10"	10"	3"	7"	7"	4"	4"	4"	4"	4"	4"	4"	4"
	5/16" HANGER BOLT (MALE) W/ 2 1/2" MIN EMBED & 1 1/4" E.D.	38	12"	12"	12"	12"	12"	12"	11"	11"	10"	10"	10"	10"	10"
	3/8" HANGER BOLT (MALE) W/ 3" MIN EMBED & 1 1/2" E.D.	38	12"	12"	12"	12"	12"	12"	10"	10"	10"	10"	10"	10"	10"
		47	12"	12"	12"	12"	12"	12"	11"	11"	8"	8"	8"	8"	8"
		66	12"	12"	12"	9"	9"	9"	6"	6"	6"	6"	6"	6"	6"
		96	12"	12"	12"	10"	8"	8"	5"	6"	6"	6"	6"	6"	6"
		128	9"	9"	8"	8"	8"	5"	6"	6"	6"	6"	6"	6"	6"
		38	12"	12"	12"	12"	12"	12"	10"	10"	10"	10"	10"	10"	10"
		47	12"	12"	12"	12"	12"	12"	9"	9"	8"	8"	8"	8"	8"
		66	12"	12"	12"	9"	9"	9"	6"	6"	6"	6"	6"	6"	6"
	96	12"	12"	12"	10"	8"	8"	5"	6"	6"	6"	6"	6"	6"	
	128	9"	9"	9"	8"	8"	6"	6"	6"	6"	6"	6"	6"	6"	

ANCHOR NOTES:

- 1/4" TAPCONS SHALL BE BY ITW, ULTRACONS SHALL BE BY ELCO, AS LISTED IN APPROPRIATE ANCHOR SCHEDULE. "ELCO PANELMATE" ANCHORS MAY BE MALE OR FEMALE ONLY, AS ILLUSTRATED.
- ENSURE MINIMUM EDGE DISTANCE FOR ALL ANCHORS PER RESPECTIVE ANCHOR SCHEDULE. EDGE DISTANCE OF 3/4" IS ACCEPTABLE FOR ANCHORS TO WOOD, EXCEPT FOR 5/16" AND 3/8" HANGER BOLTS. REFERENCE ANCHOR SCHEDULE FOR MINIMUM EDGE DISTANCE REQUIREMENTS FOR THESE ANCHORS.
- MINIMUM EMBEDMENT SHALL BE AS NOTED IN ANCHOR SCHEDULE. MINIMUM EMBEDMENT AND EDGE DISTANCE EXCLUDES STUCCO, FOAM, BRICK, AND OTHER WALL FINISHES.
- ANCHORS SHALL BE INSTALLED IN ACCORDANCE WITH MANUFACTURERS' RECOMMENDATIONS.
- ALL CONCRETE ANCHORS SPECIFIED HEREIN SHALL BE INSTALLED TO NON-CRACKED CONCRETE ONLY.
- WHERE EXISTING STRUCTURE IS WOOD FRAMING, EXISTING CONDITIONS MAY VARY. FIELD VERIFY THAT ANCHORS ARE INTO ADEQUATE WOOD FRAMING MEMBERS, NOT INTO PLYWOOD.
- ANCHORS FASTENED TO NARROW FACE OF STUD FRAMING SHALL BE LOCATED IN CENTER OF NOMINAL 2x4 (MIN) WOOD STUD (I.E. 3/4" EDGE DISTANCE IS ACCEPTABLE FOR ANCHORS TO WOOD FRAMING). WOOD STRUCTURE SHALL BE "SOUTHERN PINE" G=0.55, "SPRUCE-PINE-FIR" G=0.42, OR GREATER DENSITY.
- ANCHOR SCHEDULE APPLIES FOR ALL PRODUCTS CERTIFIED HEREIN, BUT ONLY PROVIDES MAXIMUM ALLOWABLE ANCHOR SPACING. MAXIMUM ALLOWABLE SPANS AND PRESSURES INDICATED IN SPAN SCHEDULE SHALL APPLY.
- MACHINE SCREWS SHALL HAVE MINIMUM OF 1/2" ENGAGEMENT OF THREADS IN BASE ANCHOR AND MAY HAVE A PAN HEAD, TRUSS HEAD, OR WAFFER HEAD ("SIDEWALK BOLT") U.N.O.
- DESIGNATES ANCHOR CONDITIONS WHICH ARE NOT ACCEPTABLE FOR USE.
- * DESIGNATES ANCHORS WHICH ARE REMOVABLE AND MAY BE USED FOR DIRECT MOUNT INSTALLATIONS.

FRANK L. BENNARDO, P.E.
#PE0046549
08/10/2017
No P...
ENGINEERING EXPRESS
160 SW 12th AVE, #106
DEERFIELD BEACH, FL 33442
Ph: (954) 354-0660 FAX: (954) 354-0443
E: HELLO@ENGINEERINGEXPRESS.COM
CERT OF AUTH #9885
ENGINEERINGEXPRESS.COM

Wayne Dalton
A DIVISION OF OVERHEAD DOOR CORP.
3395 ADDISON DRIVE
PENSACOLA, FL 32514
FABRIC-SHIELD STORM PANEL
FLORIDA STATEWIDE APPROVAL #FL3227.1
NON-HVHZ APPROVED

DATE	12/10/09
DATE	12/15/11
DATE	02/04/15
DATE	08/08/17

14-2057
SCALE:
PAGE DESCRIPTION:
WAYNE-DALTON PART #317477
OF 4
2

ANCHOR SCHEDULE 3

FRANK L. BENNARDO, P.E.
WPE0046549

FRANK L. BENNARDO
PROFESSIONAL ENGINEER
No. PE 0046549

08/10/2017

ENGINEERING EXPRESS
160 SW 12th AVENUE, #106
DEERFIELD BEACH, FL 33442
Ph: (954) 354-0660 FAX: (954) 354-0443
E: HELLO@ENGINEERINGEXPRESS.COM
CERT OF AUTH #8885
ENGINEERINGEXPRESS.COM

ANCHOR SCHEDULE 2

HOST STRUCT.	ANCHOR	LOAD (psf)	3/4" MIN EDGE DISTANCE																																																
			Spans Up To 4'-0"			Spans Up To 6'-0"			Spans Up To 9'-0"																																										
			C1	C2	C3	C1	C2	C3	C1	C2	C3																																								
WOOD (G=0.42)	1/4" LAG SCREW WITH MIN 2-3/32" THREAD PENETR. 	38	9"	9"	3"	6"	6"		4"	4"		47	7"	7"		5"	5"		3"	3"		66	5"	5"		4"	4"					96	4"	4"		3"	3"					128	3"	3"		3"	3"				
	1/4" TAPCON (ELCO OR S.S. ITW) OR 1/4" ELCO CRETE-FLEX OR #14 WOOD SCREW WITH 1-1/2" MIN THREAD PEN. 	38	8"	8"	3"	5"	5"		4"	4"		47	6"	6"	3"	4"	4"		3"	3"		66	5"	5"		3"	3"					96	4"	4"		3"	3"					128	3"	3"		3"	3"				
	1/4" ITW TAPCON SG WITH 1-1/2" MIN EMBED 	38	11"	11"	12"	7"	7"	10"	5"	5"	6"	47	9"	9"	12"	6"	6"	8"	4"	4"	5"	66	6"	6"	8"	4"	4"	5"	3"	3"	3"	96	5"	5"	6"	4"	4"	3"	3"	3"		128	4"	4"	5"	4"	4"	3"			
	3/16" ITW SAMMY SUPER SCREW WITH 1-1/2" MIN EMBED 	38	12"	12"	12"	8"	8"	8"	6"	6"	5"	47	10"	10"	10"	7"	7"	7"	5"	5"	4"	66	7"	7"	7"	5"	5"	5"	3"	3"		96	6"	6"	5"	4"	4"	3"	3"	3"		128	5"	5"	4"	4"	4"	3"			
	1/4" ELCO PANELMATE (MALE OR FEMALE) WITH 1-7/8" MIN EMBED 	38	12"	12"	12"	9"	9"	9"	6"	6"	6"	47	11"	11"	11"	8"	8"	7"	5"	5"	4"	66	8"	8"	8"	5"	5"	5"	4"	4"	3"	96	7"	7"	6"	5"	5"	3"	4"	4"	3"	128	5"	5"	5"	5"	5"	3"	4"	4"	3"
	1/4" HANGER BOLT (MALE) W/ 2 1/2" MIN EMBED & 1 1/4" E.D. 	38	9"	9"	3"	6"	6"		4"	4"		47	7"	7"		4"	4"		3"	3"		66	5"	5"		4"	4"					96	4"	4"		3"	3"					128	3"	3"		3"	3"				
	5/16" HANGER BOLT (MALE) W/ 2 1/2" MIN EMBED & 1 1/4" E.D. 	38	12"	12"	12"	12"	12"	11"	8"	8"	7"	47	12"	12"	12"	10"	10"	9"	7"	7"	6"	66	11"	11"	9"	7"	7"	6"	5"	5"	3"	96	9"	9"	7"	6"	6"	4"	5"	5"	3"	128	7"	7"	6"	6"	6"	4"	5"	5"	3"
	3/8" HANGER BOLT (MALE) W/ 3" MIN EMBED & 1 1/2" E.D. 	38	12"	12"	12"	12"	12"	12"	9"	9"	9"	47	12"	12"	12"	10"	10"	11"	7"	7"	7"	66	11"	11"	11"	7"	7"	7"	5"	5"	4"	96	10"	10"	8"	6"	6"	4"	5"	5"	4"	128	7"	7"	7"	6"	6"	4"	5"	5"	4"

HOST STRUCT.	ANCHOR	LOAD (psf)	2" MIN EDGE DISTANCE									2-1/2" MIN EDGE DISTANCE																																							
			Spans Up To 4'-0"			Spans Up To 6'-0"			Spans Up To 9'-0"			Spans Up To 4'-0"			Spans Up To 6'-0"			Spans Up To 9'-0"																																	
			C1	C2	C3	C1	C2	C3	C1	C2	C3	C1	C2	C3	C1	C2	C3	C1	C2	C3																															
CONCRETE	1/4" TAPCON (ITW) WITH 1-3/4" EMBED (3192 psi MIN CONC) 	38	12"	12"	12"	12"	12"	11"	10"	10"	7"	47	12"	12"	12"	12"	12"	9"	8"	8"	6"	66	12"	12"	10"	8"	8"	6"	5"	5"	4"	96	11"	11"	7"	7"	7"	4"	5"	5"	4"	128	8"	8"	6"	7"	7"	4"	5"	5"	4"
	1/4" ULTRACON (ELCO) WITH 1-3/4" EMBED (2846 psi MIN CONC) 	38	12"	12"	12"	12"	12"	11"	12"	12"	7"	47	12"	12"	12"	12"	12"	9"	9"	9"	6"	66	12"	12"	9"	10"	10"	6"	7"	7"	4"	96	12"	12"	7"	8"	8"	4"	7"	7"	4"	128	9"	9"	6"	8"	8"	4"	7"	7"	4"
	1/4" ELCO PANELMATE WITH 2" EMBEDMENT (MIN 3350psi CONC) 	38	12"	12"	12"	12"	12"	12"	12"	12"	9"	47	12"	12"	12"	12"	11"	10"	10"	10"	6"	66	12"	12"	11"	11"	11"	7"	7"	7"	4"	96	12"	12"	9"	9"	9"	5"	7"	7"	4"	128	11"	11"	7"	9"	9"	5"	7"	7"	4"
	1/4-20 ALL POINTS SOLID-SET ANCHOR W/ 7/8" EMBED (MIN 3000psi CONC) 	38	12"	12"	12"	12"	12"	10"	12"	12"	7"	47	12"	12"	12"	12"	12"	8"	10"	10"	5"	66	12"	12"	8"	11"	11"	6"	7"	7"	3"	96	12"	12"	6"	9"	9"	4"	7"	7"	3"	128	10"	10"	5"	9"	9"	4"	7"	7"	3"
	1/4-20 POWERS CALK-IN WITH 7/8" EMBEDMENT (MIN 3000psi CONC) 	38	12"	12"	12"	12"	12"	8"	6"	6"	4"	47	10"	10"	7"	7"	7"	5"	4"	4"	3"	66	7"	7"	5"	5"	5"	3"	3"	3"		96	6"	6"	4"	4"	4"	3"	3"	3"		128	5"	5"	3"	4"	4"	3"	3"	3"	
	1/4" ITW TAPCON SG OR SAMMY SUPER SCREW W/ MIN 1 3/4" EMBEDMENT (MIN 3295psi CONC) 	38	12"	12"	12"	12"	12"	9"	9"	9"	6"	47	12"	12"	10"	11"	11"	7"	7"	7"	4"	66	12"	12"	7"	8"	8"	5"	5"	5"	3"	96	10"	10"	6"	7"	7"	3"	5"	5"	3"	128	7"	7"	5"	7"	7"	3"	5"	5"	3"
	1/4" - ELCO CRETE-FLEX W/ 2" EMBED (MIN 3350psi CONC) 	38	12"	12"	12"	12"	12"	12"	12"	12"	8"	47	12"	12"	12"	12"	12"	10"	11"	11"	6"	66	12"	12"	10"	12"	12"	7"	8"	8"		96	12"	12"	8"	10"	10"	8"	8"	8"		128	11"	11"	6"	10"	10"	8"	8"	8"	
	1/2" - ITW REDHEAD MULTI-SET II W/ 1-5/8" EMBED (MIN 3000psi CONC) 	38										47										66										96										128									
	3/8-16 POWERS CALK-IN W/ 1 1/4" EMBED (MIN 3000psi CONC) 	38	12"	12"	12"	12"	12"	10"	12"	12"	7"	47	12"	12"	12"	12"	12"	8"	9"	9"	5"	66	12"	12"	9"	10"	10"	6"	7"	7"	4"	96	12"	12"	7"	8"	8"	4"	7"	7"	4"	128	9"	9"	5"	8"	8"	4"	7"	7"	4"
	1/2" - PANELMATE L INSERT W/ 1-1/4" EMBED & 3-1/2" MIN E.D. (MIN 2700psi CONC) 	38	12"	12"	12"	12"	12"	12"	9"	12"	6"	47	12"	12"	11"	12"	12"	8"	12"	12"		66	12"	12"	8"	12"	12"		9"	9"		96	12"	12"	6"	10"	10"		9"	9"		128	12"	12"		10"	10"		9"	9"	

Wayne Dalton
A DIVISION OF OVERHEAD DOOR CORP.
3395 ADDISON DRIVE
PENSACOLA, FL 32514

FABRIC-SHIELD STORM PANEL
FLORIDA STATEWIDE APPROVAL #FL3227.1
NON-HVHZ APPROVED

DRWN	CHKD	DATE
KL	FLB	12/10/09
KL	FLB	12/15/11
KL	CSL	02/04/15
LAO	FLB	08/08/17

REMARKS: THIS SCHEDULE IS THE PROPERTY OF ENGINEERING EXPRESS. IT IS TO BE USED ONLY IN CONNECTION WITH THE PROJECTS SPECIFICALLY IDENTIFIED HEREIN. ANY REPRODUCTION IN WHOLE OR IN PART WITHOUT WRITTEN CONSENT OF THE CREATING ENGINEER, AT PENALTY, IS PROHIBITED. ANY OTHER MARKINGS OR OTHER DOCUMENTS ARE NOT PERMITTED AND INVALIDATE OUR CERTIFICATION.

14-2057

SCALE: -

PAGE DESCRIPTION:
WAYNE-DALTON PART #317477

OF 4

3

ANCHOR SCHEDULE 4

HOST STRUCT.	ANCHOR	LOAD (psf)	2" MIN EDGE DISTANCE											
			Spans Up To 4'-0"			Spans Up To 6'-0"			Spans Up To 9'-0"					
			CONN TYPE	C1	C2	C3	CONN TYPE	C1	C2	C3	CONN TYPE	C1	C2	C3
HOLLOW BLOCK	1/4" ULTRACON (ELCO) WITH 1-1/4" EMBED	38	12"	12"	12"	9"	9"	9"	6"	6"				
		47	11"	11"	11"	7"	7"	7"	5"	5"				
		66	8"	8"	8"	7"	7"	7"	5"	5"				
		96	6"	6"	6"	6"	6"	6"	5"	5"				
	1/4" TAPCON (ITW) WITH 1-1/4" EMBED	38	10"	10"	10"	7"	7"	7"	5"	5"				
		47	8"	8"	8"	5"	5"	5"	4"	4"				
		66	6"	6"	6"	4"	4"	4"	3"	3"				
		96	5"	5"	5"	3"	3"	3"	3"	3"				
	1/4" ELCO PANELMATE (MALE OR FEMALE) WITH MIN 1-1/4" EMBEDMENT	38	12"	12"	12"	9"	9"	9"	6"	6"	3"			
		47	11"	11"	11"	7"	7"	7"	5"	5"	3"			
		66	8"	8"	8"	5"	5"	5"	3"	3"	3"			
		96	6"	6"	6"	4"	4"	4"	3"	3"	3"			
	1/4" ITW TAPCON SG OR SAMMY SUPER SCREW W/ MIN 1 1/4" EMBEDMENT	38	12"	12"	12"	9"	9"	9"	6"	6"	4"			
		47	10"	10"	10"	7"	7"	7"	5"	5"	4"			
		66	7"	7"	7"	5"	5"	5"	3"	3"	3"			
		96	6"	6"	6"	4"	4"	4"	3"	3"	3"			
	1/4-20 ALL POINTS SOLID-SET ANCHOR WITH MIN 7/8" EMBEDMENT	38	12"	12"	12"	9"	9"	9"	6"	6"	4"			
		47	11"	11"	11"	8"	8"	8"	5"	5"	3"			
		66	8"	8"	8"	5"	5"	5"	4"	4"	4"			
		96	7"	7"	7"	4"	4"	4"	4"	4"	4"			
5/16" ULTRACON (ELCO) WITH MIN 1 1/4" EMBED	38	12"	12"	12"	9"	9"	9"	6"	6"	4"				
	47	11"	11"	11"	7"	7"	7"	5"	5"	4"				
	66	8"	8"	8"	5"	5"	5"	3"	3"	3"				
	96	6"	6"	6"	4"	4"	4"	3"	3"	3"				
3/8" RED HEAD LDT W/ MIN 1 1/2" EMBEDMENT	38	12"	12"	12"	9"	9"	9"	6"	6"	4"				
	47	11"	11"	11"	7"	7"	7"	5"	5"	4"				
	66	8"	8"	8"	5"	5"	5"	3"	3"	3"				
	96	6"	6"	6"	4"	4"	4"	3"	3"	3"				

HOST STRUCT.	ANCHOR	LOAD (psf)	2-1/2" MIN EDGE DISTANCE											
			Spans Up To 4'-0"			Spans Up To 6'-0"			Spans Up To 9'-0"					
			CONN TYPE	C1	C2	C3	CONN TYPE	C1	C2	C3	CONN TYPE	C1	C2	C3
HOLLOW BLOCK	1/4" ULTRACON (ELCO) WITH 1-1/4" EMBED	38	10"	10"	10"	7"	7"	7"	5"	5"				
		47	8"	8"	8"	5"	5"	5"	4"	4"				
		66	6"	6"	6"	4"	4"	4"	3"	3"				
		96	5"	5"	5"	3"	3"	3"	3"	3"				
	1/4" TAPCON (ITW) WITH 1-1/4" EMBED	38	10"	10"	10"	7"	7"	7"	5"	5"				
		47	8"	8"	8"	5"	5"	5"	4"	4"				
		66	6"	6"	6"	4"	4"	4"	3"	3"				
		96	5"	5"	5"	3"	3"	3"	3"	3"				
	1/4" ELCO PANELMATE (MALE OR FEMALE) WITH MIN 1-1/4" EMBEDMENT	38	12"	12"	12"	9"	9"	9"	6"	6"	3"			
		47	11"	11"	11"	7"	7"	7"	5"	5"	3"			
		66	8"	8"	8"	5"	5"	5"	3"	3"	3"			
		96	6"	6"	6"	4"	4"	4"	3"	3"	3"			
	1/4" ITW TAPCON SG OR SAMMY SUPER SCREW W/ MIN 1 1/4" EMBEDMENT	38	12"	12"	12"	9"	9"	9"	6"	6"	4"			
		47	10"	10"	10"	7"	7"	7"	5"	5"	3"			
		66	7"	7"	7"	5"	5"	5"	3"	3"	3"			
		96	6"	6"	6"	4"	4"	4"	3"	3"	3"			
	1/4-20 ALL POINTS SOLID-SET ANCHOR WITH MIN 7/8" EMBEDMENT	38	12"	12"	12"	9"	9"	9"	6"	6"	4"			
		47	11"	11"	11"	8"	8"	8"	5"	5"	3"			
		66	8"	8"	8"	5"	5"	5"	4"	4"	4"			
		96	7"	7"	7"	4"	4"	4"	4"	4"	4"			
5/16" ULTRACON (ELCO) WITH MIN 1 1/4" EMBED	38	12"	12"	12"	9"	9"	9"	6"	6"	4"				
	47	11"	11"	11"	7"	7"	7"	5"	5"	4"				
	66	8"	8"	8"	5"	5"	5"	3"	3"	3"				
	96	6"	6"	6"	4"	4"	4"	3"	3"	3"				
3/8" RED HEAD LDT W/ MIN 1 1/2" EMBEDMENT	38	12"	12"	12"	9"	9"	9"	6"	6"	4"				
	47	11"	11"	11"	7"	7"	7"	5"	5"	4"				
	66	8"	8"	8"	5"	5"	5"	3"	3"	3"				
	96	6"	6"	6"	4"	4"	4"	3"	3"	3"				

LOAD (psf)	1" MIN EDGE DISTANCE											
	Spans Up To 4'-0"			Spans Up To 6'-0"			Spans Up To 9'-0"					
	CONN TYPE	C1	C2	C3	CONN TYPE	C1	C2	C3	CONN TYPE	C1	C2	C3
38	8"	8"	8"	7"	7"	7"	6"	6"	6"			
47	7"	7"	7"	6"	6"	6"	5"	5"	5"			
66	6"	6"	6"	5"	5"	5"	4"	4"	4"			
96	5"	5"	5"	4"	4"	4"	3"	3"	3"			
128	4"	4"	4"	3"	3"	3"	3"	3"	3"			

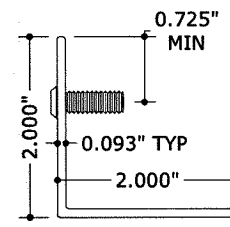
LOAD (psf)	3 1/2" MIN EDGE DISTANCE											
	Spans Up To 4'-0"			Spans Up To 6'-0"			Spans Up To 9'-0"					
	CONN TYPE	C1	C2	C3	CONN TYPE	C1	C2	C3	CONN TYPE	C1	C2	C3
38	12"	12"	12"	12"	12"	12"	9"	9"	9"	12"	12"	12"
47	12"	12"	12"	11"	11"	11"	8"	8"	8"	12"	12"	12"
66	10"	10"	10"	7"	7"	7"	6"	6"	6"	10"	10"	10"
96	8"	8"	8"	6"	6"	6"	6"	6"	6"	8"	8"	8"
128	7"	7"	7"	6"	6"	6"	6"	6"	6"	7"	7"	7"

ANCHOR SCHEDULE 5

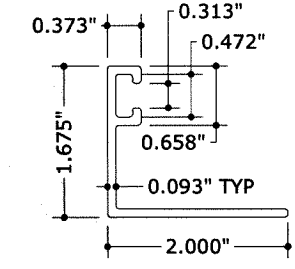
HOST STRUCT.	ANCHOR	LOAD (psf)	1/2" MIN EDGE DISTANCE											
			Spans Up To 4'-0"			Spans Up To 6'-0"			Spans Up To 9'-0"					
			CONN TYPE	C1	C2	C3	CONN TYPE	C1	C2	C3	CONN TYPE	C1	C2	C3
18GA STEEL	#14 SAE GR 5 SMS TO MINIMUM 18GA (0.0478") STEEL STUDS (MIN Fu = 50 KSI)	38	12"	12"	12"	12"	12"	12"	12"	12"	12"	12"	12"	12"
		47	12"	12"	12"	12"	12"	12"	12"	12"	12"	12"	12"	12"
		66	12"	12"	12"	12"	12"	12"	12"	12"	12"	12"	12"	12"
		96	12"	12"	12"	12"	12"	12"	12"	12"	12"	12"	12"	12"
		128	12"	12"	12"	12"	12"	12"	12"	12"	12"	12"	12"	12"

ANCHOR SCHEDULE 6

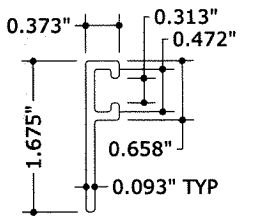
HOST STRUCT.	ANCHOR	LOAD (psf)	1/2" MIN EDGE DISTANCE											
			Spans Up To 4'-0"			Spans Up To 6'-0"			Spans Up To 9'-0"					
			CONN TYPE	C1	C2	C3	CONN TYPE	C1	C2	C3	CONN TYPE	C1	C2	C3
ALUMINUM	#14 SAE GR 5 SMS TO 6063-T6 ALUMINUM (1/8" MIN)	38	12"	12"	12"	12"	12"	12"	12"	12"	12"	12"	12"	12"
		47	12"	12"	12"	12"	12"	12"	12"	12"	12"	12"	12"	12"
		66	12"	12"	12"	12"	12"	12"	12"	12"	12"	12"	12"	12"
		96	12"	12"	12"	12"	12"	12"	12"	12"	12"	12"	12"	12"
		128	12"	12"	12"	12"	12"	12"	12"	12"	12"	12"	12"	12"



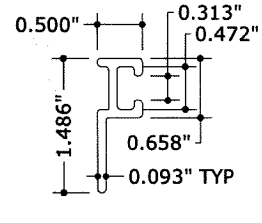
1 **STUDED ANGLE**
4 6" = 1'-0"



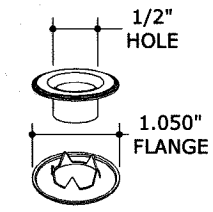
2 **"F" ANGLE**
4 6" = 1'-0"



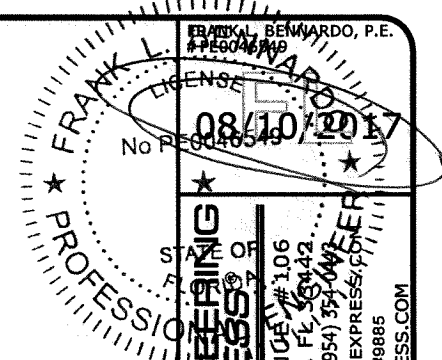
3 **"F" TRACK**
4 6" = 1'-0"



4 **"BF" TRACK**
4 6" = 1'-0"



5 **#4 GROMMET**
4 6" = 1'-0" ISOMETRIC



ENGINEERING EXPRESS
160 SW 12th AVE SUITE 1106
DEERFIELD BEACH, FL 33442
PH: (954) 354-0660 FAX: (954) 354-0662
E: HELLO@ENGINEERINGEXPRESS.COM
ENGINEERINGEXPRESS.COM

WAYNE-DALTON
A DIVISION OF OVERHEAD DOOR CORP.
3395 ADDISON DRIVE
PENSACOLA, FL 32514
FABRIC-SHIELD STORM PANEL
FLORIDA STATEWIDE APPROVAL #FL3227.1
NON-HVHZ APPROVED

Wayne Dalton

REMARKS	DRWN	CHKD	DATE
INIT ISSUE	KL	FLB	12/10/09
2010 FBC	KL	FLB	12/15/11
REV 2014 FBC (09-WDF-0001)	IRVN	CSL	02/04/15
REV 2017 FBC	LAO	FLB	08/08/17

THIS DOCUMENT IS THE PROPERTY OF ENGINEERING EXPRESS AND SHALL NOT BE REPRODUCED IN WHOLE OR PART WITHOUT WRITTEN CONSENT OF THE CERTIFYING ENGINEER. ALTERATIONS, ADDITIONS, INKBLINDING, OR OTHER MARKINGS TO THIS DOCUMENT ARE NOT PERMITTED AND INVALIDATE OUR CERTIFICATION.

14-2057
SCALE:
PAGE DESCRIPTION:
WAYNE-DALTON PART #317477

V:\Projects\14-2057 FSA-Update FL3227.1 (09-WDF-0001)\2014 FBC-Product Eval\MP\FBC Update 2017\14-2057b-Dwg-FL3227.1.dwg 08/10/2017 - 10:41am Luiso