

U.S. Made LED Fixtures and Retrofits Wholesale Prices

2014

PRICING GUIDE

TABLE OF CONTENTS

DESCRIPTION	PAGE
PRICING GUIDELINES	5
AREALIGHT series	
AREALIGHT.L	7
AREALIGHT.M	7
AREALIGHT.R	8
AREALIGHT.S	8
AREALIGHT.T	9
AREALIGHT.X	10
CANOPY series	
CANOPY.A	10
CANOPY.Q	11
CANOPY.S	11
CANOPY.W	12
CANOPY.X	12
CANOPY.Y	13
CANOPY.Z	13
COBRAHEAD series	
COBRAHEAD.A	14
COBRAHEAD.APC	14
DOWNLIGHT series	
DOWNLIGHT.X	15
FLOODLIGHT series	
FLOODLIGHT.L	15
FLOODLIGHT.R	15
FLOODLIGHT.S	16
FLOODLIGHT.XXL	16

DESCRIPTION	PAGE
HIGHBAY series	
HIGHBAY.DL	17
HIGHBAY.DM	17
HIGHBAY.M	18
HIGHBAY.S	19
MAX TROFFER	20
LOWBAY series	
LOWBAY.2	21
LOWBAY.4	22
LOWBAY.8	23
SHOEBOX series	
SHOEBOX.L	24
SHOEBOX.M	25
SHOEBOX.S	26
WALLPACK series	
WALLPACK.C	26
WALLPACK.D	27
WALLPACK.H	27
WALLPACK.J	27
WALLPACK.K	28
WALLPACK.L	28
WALLPACK.M	28
WALLPACK.R	29
WALLPACK.S	29
WALLPACK.X	29
WALLPACK.Y	30
WALLPACK.Z	30

DESCRIPTION	PAGE
-------------	------

LIGHT ENGINE RETROFITS	
HEX CONFIGURATIONS	31
LIN CONFIGURATIONS	32
FIN LIN CONFIGURATIONS	33
PYR HEX CONFIGURATIONS	33

PRICING GUIDELINES

LIGHT ENGINE OPTIONS		PRICE	ORDER CODE
BEAM SPREAD			
STANDARD BEAM SPREAD/ANGLE	115°	<i>STANDARD OPTION</i>	
OPTIONAL BEAM SPREAD/ANGLE	80° (FOR HEX CONFIGURATIONS)	<i>NO ADDER</i>	80D
CUSTOM BEAM SPREAD/ANGLE	40° (FOR HEX CONFIGURATIONS)	<i>+20% per light</i>	40D
DISTRIBUTION TYPE			
STANDARD TYPE DISTRIBUTION	TYPE V	<i>STANDARD OPTION</i>	
OPTIONAL TYPE DISTRIBUTIONS:			
TYPE II (EVEN LIN & HEX CONFIGURATIONS ONLY)		<i>+20% per light</i>	T2
TYPE III		<i>+20% per light</i>	T3
TYPE IV		<i>+20% per light</i>	T4
TYPE RIGHT SLANTED		<i>+20% per light</i>	TRS
TYPE LEFT SLANTED		<i>+20% per light</i>	TLS
COLOR TEMPERATURE			
STANDARD COLOR TEMPERATURE	~5700K (COOL WHITE)	<i>NO ADDER</i>	CW
OPTIONAL COLOR TEMPERATURES:			
~4300K (NEUTRAL WHITE)		<i>NO ADDER</i>	NW
~3000K (WARM WHITE)		<i>+20% per light</i>	WW
CUSTOM COLORS AND TIGHT BINS AVAILABLE		<i>+30% per light</i>	CC
VOLTAGE			
STANDARD VOLTAGE 120-277V	<i>NO ADDER</i>		MT
HIGH VOLTAGE 347-480V up to 150W	347-480V	<i>\$76</i>	HV1
HIGH VOLTAGE 347-480V greater than 150W	347-480V	<i>\$134</i>	HV2
HIGH VOLTAGE 347-480V greater than 300W	347-480V	<i>\$267</i>	HV3
SURGE PROTECTORS			
120V SURGE PROTECTOR		<i>\$54</i>	SGR1
277V SURGE PROTECTOR		<i>\$60</i>	SGR2
480V SURGE PROTECTOR		<i>\$74</i>	SGR4
WARRANTY			
STANDARD WARRANTY	5 YEARS	<i>STANDARD OPTION</i>	
OPTIONAL EXTENDED WARRANTY	10 YEARS	<i>+25% total order</i>	10YR
DIMMING			
Dimming (up to 100w)		<i>+20% per light</i>	010V or STEP
Dimming (> 100w)		<i>+15% per light</i>	010V or STEP
010V = 0-10V Dimming Functionality STEP = Step Dimming Functionality			
Note: Noribachi does not guarantee compatibility of any particular dimmable light in any particular installation.			
FIXTURE OPTIONS		PRICE	ORDER CODE
CUSTOM FIXTURE FINISH (LEAD TIME IS 12 WEEKS)		<i>\$150 per fixture</i>	COL
MARINE GRADE FIXTURE COATING (LEAD TIME IS 12 WEEKS)		<i>\$200 per fixture</i>	COAT
EPOXY COATING (LEAD TIME IS 12 WEEKS)		<i>\$250 per fixture</i>	EPOXY
Note: Custom Fixture Finish, Marine Grade Fixture Coating and Epoxy Coating are available for all Mounts at an extra fee of \$50 per mount.			

PRICING GUIDELINES

SHIPPING AND LEAD TIME OPTIONS		PRICE/DETAILS
SHIPPING & HANDLING		
FREIGHT (ORDERS LESS THAN \$2750)		+7% SHIPPING & HANDLING
FREIGHT (ORDERS OVER \$2750 TO A SINGLE DESTINATION WITHIN THE CONTINENTAL USA)		FREIGHT INCLUDED
WILL CALL OR USE OF CUSTOMER SHIPPING ACCOUNT		+3% HANDLING
CANADIAN SHIPPING (ORDERS LESS THAN \$6800)		+7% SHIPPING & HANDLING
CANADIAN SHIPPING (ORDERS OVER \$6800) TO A SINGLE DESTINATION WITHIN CANADA)		FREIGHT INCLUDED
Note: Canadian customs brokerage, duties, taxes and/or GST are NOT INCLUDED.		
LEAD TIMES		
ESTIMATED LEAD TIMES:		
STANDARD JOBS		4 WEEK LEAD TIME
CUSTOM ENGINEERED JOBS		12 WEEK LEAD TIME
*EXPEDITE FEE (ORDER SHIPPED IN 2 WEEKS):		
\$0 - \$50,000 ORDER		+6% OF TOTAL ORDER
\$50,001 - \$100,000 ORDER		+8% OF TOTAL ORDER
> \$100,000 ORDER		+10% OF TOTAL ORDER
*RESERVES THE RIGHT TO TURN DOWN EXPEDITED REQUESTS IF CURRENT PRODUCTION SCHEDULES DO NOT ALLOW. WE WILL NOTIFY YOU WITHIN 48 HOURS OF RECEIVING VERIFIED PURCHASE ORDER AND PAYMENT FOR YOUR ORDER.	**WE CANNOT GUARANTEE AN ARRIVAL/DELIVERY DATE. WE SIMPLY PROVIDE AN ESTIMATED SHIP DATE (ESD) AS WE DO NOT HAVE CONTROL OVER 3RD PARTY SHIPPING COMPANIES.**	



AREALIGHT.L

LEDS	WATTAGE	REPLACES	NOMINAL LUMENS	PRICE	ORDER CODE
72	108	225-435W	15,192	\$998	LIN-072-B-CW-[voltage order code]-ALL
84	126	300-525W	17,724	\$1004	HEX-084-B-CW-[voltage order code]-ALL
105	158	400-650W	22,155	\$1038	HEX-105-B-CW-[voltage order code]-ALL
126	189	550-800W	26,586	\$1079	HEX-126-B-CW-[voltage order code]-ALL
140	210	750-1000W	29,540	\$1136	LIN-140-B-CW-[voltage order code]-ALL
168	252	725-1200W	35,448	\$1331	HEX-168-B-CW-[voltage order code]-ALL
OPTIONAL UPGRADES				PRICE	ORDER CODE
347-480V UP TO 150W				\$76	HV1
347-480V GREATER THAN 150W				\$134	HV2
ARM FOR 5"-4" SQUARE POLE				\$74	ARM
EMERGENCY BATTERY BACKUP, 5W, 600 LUMENS, 90 MINUTES MUST PROVIDE EXACT VOLTAGE REQUIREMENTS				\$239	EM
POLE MOUNTED OCCUPANCY SENSOR				\$230	PMOCC



AREALIGHT.M

LEDS	WATTAGE	REPLACES	NOMINAL LUMENS	PRICE	ORDER CODE
72	108	225-435W	15,192	\$583	LIN-072-B-CW-[voltage order code]-ALM
84	126	300-525W	17,724	\$591	HEX-084-B-CW-[voltage order code]-ALM
105	158	400-650W	22,155	\$624	HEX-105-B-CW-[voltage order code]-ALM
126	189	550-800W	26,586	\$667	HEX-126-B-CW-[voltage order code]-ALM
140	210	750-1000W	29,540	\$723	LIN-140-B-CW-[voltage order code]-ALM
168	252	725-1200W	35,448	\$918	HEX-168-B-CW-[voltage order code]-ALM
OPTIONAL UPGRADES				PRICE	ORDER CODE
347-480V UP TO 150W				\$76	HV1
347-480V GREATER THAN 150W				\$134	HV2
TRUNNION MOUNT				\$26	TR
SLIP FITTER MOUNT				\$46	SF
6" ARM MOUNT				\$51	AM6
10" ARM MOUNT				\$70	AM10
POLE MOUNTED OCCUPANCY SENSOR				\$230	PMOCC



AREALIGHT.R

LEDS	WATTAGE	REPLACES	NOMINAL LUMENS	PRICE	ORDER CODE
72	108	225-435W	15,192	\$876	LIN-072-B-CW-[voltage order code]-ALR
84	126	300-525W	17,724	\$883	HEX-084-B-CW-[voltage order code]-ALR
105	158	400-650W	22,155	\$916	HEX-105-B-CW-[voltage order code]-ALR
126	189	550-800W	26,586	\$958	HEX-126-B-CW-[voltage order code]-ALR
140	210	750-1000W	29,540	\$1016	LIN-140-B-CW-[voltage order code]-ALR
OPTIONAL UPGRADES				PRICE	ORDER CODE
347-480V UP TO 150W				\$76	HV1
347-480V GREATER THAN 150W				\$134	HV2
ROUND POLE ADAPTER				\$50	RPA
WALL MOUNT ADAPTER				\$67	WMA
PHOTOCELL BRACKET & RECPTACLE				\$20	PCB
POLE MOUNTED OCCUPANCY SENSOR				\$230	PMOCC
TWIST LOCK PHOTOCELL 120V-277V				\$54	TLPC
VISOR				\$122	V
EMERGENCY BATTERY BACKUP, 5W, 600 LUMENS, 90 MINUTES MUST PROVIDE EXACT VOLTAGE REQUIREMENTS				\$239	EM



AREALIGHT.S

LEDS	WATTAGE	REPLACES	NOMINAL LUMENS	PRICE	ORDER CODE
42	63	125-300W	8,862	\$444	HEX-042-B-CW-[voltage order code]-ALS
63	95	200-400W	13,293	\$548	HEX-063-B-CW-[voltage order code]-ALS
84	126	300-525W	17,724	\$624	HEX-084-B-CW-[voltage order code]-ALS
OPTIONAL UPGRADES				PRICE	ORDER CODE
347-480V UP TO 150W				\$76	HV1
ROUND POLE ADAPTER				\$35	RPA
WALL MOUNT ADAPTER				\$39	WMA
PHOTOCELL BRACKET & RECPTACLE				\$20	PCB
POLE MOUNTED OCCUPANCY SENSOR				\$230	PMOCC
TWIST LOCK PHOTOCELL 120V-277V				\$54	TLPC
VISOR				\$76	V
EMERGENCY BATTERY BACKUP, 5W, 600 LUMENS, 90 MINUTES MUST PROVIDE EXACT VOLTAGE REQUIREMENTS				\$239	EM



AREALIGHT.T

LEDS	WATTAGE	REPLACES	NOMINAL LUMENS	PRICE	ORDER CODE
21	32	75-175W	4,431	\$712	HEX-021-B-CW-[voltage order code]-ALT
42	63	125-300W	8,862	\$791	HEX-042-B-CW-[voltage order code]-ALT
63	95	200-400W	13,293	\$895	HEX-063-B-CW-[voltage order code]-ALT
84	126	300-525W	17,724	\$971	HEX-084-B-CW-[voltage order code]-ALT
105	158	400-650W	22,155	\$1004	HEX-105-B-CW-[voltage order code]-ALT
126	189	550-800W	26,586	\$1046	HEX-126-B-CW-[voltage order code]-ALT
168	252	725-1200W	35,448	\$1298	HEX-168-B-CW-[voltage order code]-ALT
210	315	1000-1450W	44,310	\$1387	HEX-210-B-CW-[voltage order code]-ALT
252	378	1250-1700W	53,172	\$1462	HEX-252-B-CW-[voltage order code]-ALT
OPTIONAL UPGRADES				PRICE	ORDER CODE
347-480V UP TO 150W				\$76	HV1
347-480V GREATER THAN 150W				\$134	HV2



AREALIGHT.X

LEDS	WATTAGE	REPLACES	NOMINAL LUMENS	PRICE	ORDER CODE
21	32	75-175W	4,431	\$651	HEX-021-B-CW-[voltage order code]-ALX
42	63	125-300W	8,862	\$731	HEX-042-B-CW-[voltage order code]-ALX
63	95	200-400W	13,293	\$835	HEX-063-B-CW-[voltage order code]-ALX
84	126	300-525W	17,724	\$911	HEX-084-B-CW-[voltage order code]-ALX
105	158	400-650W	22,155	\$944	HEX-105-B-CW-[voltage order code]-ALX
126	189	550-800W	26,586	\$986	HEX-126-B-CW-[voltage order code]-ALX
168	252	725-1200W	35,448	\$1238	HEX-168-B-CW-[voltage order code]-ALX
210	315	1000-1450W	44,310	\$1327	HEX-210-B-CW-[voltage order code]-ALX
252	378	1250-1700W	53,172	\$1402	HEX-252-B-CW-[voltage order code]-ALX
OPTIONAL UPGRADES				PRICE	ORDER CODE
POLE MOUNTED OCCUPANCY SENSOR				\$230	PMOCC



CANOPY.A

LEDS	WATTAGE	REPLACES	NOMINAL LUMENS	PRICE	ORDER CODE
21	32	75-175W	4,431	\$454	HEX-021-B-CW-[voltage order code]-CAA
42	63	125-300W	8,862	\$559	HEX-042-B-CW-[voltage order code]-CAA
63	95	200-400W	13,293	\$643	HEX-063-B-CW-[voltage order code]-CAA
OPTIONAL UPGRADES				PRICE	ORDER CODE
347-480V UP TO 150W				\$76	HV1
120V BUTTON PHOTOCELL				\$18	PC1
208V - 277V BUTTON PHOTOCELL				\$18	PC2



CANOPY.Q

LEDS	WATTAGE	REPLACES	NOMINAL LUMENS	PRICE	ORDER CODE
21	21	50-125W	3,129	\$190	HEX-021-B-CW-[voltage order code]-CAQ
42	42	100-200W	6,258	\$263	HEX-042-A-CW-[voltage order code]-CAQ
42	63	125-300W	8,862	\$276	HEX-042-B-CW-[voltage order code]-CAQ
63	95	200-400W	13,293	\$370	HEX-063-B-CW-[voltage order code]-CAQ
84	126	300-525W	17,724	\$436	HEX-084-B-CW-[voltage order code]-CAQ
OPTIONAL UPGRADES				PRICE	ORDER CODE
120V BUTTON PHOTOCELL				\$18	PC1
208V - 277V BUTTON PHOTOCELL				\$18	PC2
EMERGENCY BATTERY BACKUP, 5W, 600 LUMENS, 90 MINUTES MUST PROVIDE EXACT VOLTAGE REQUIREMENTS				\$239	EM



CANOPY.S

LEDS	WATTAGE	REPLACES	NOMINAL LUMENS	PRICE	ORDER CODE
18	18	70-100W	2,682	\$191	LIN-018-A-CW-[voltage order code]-CAS
21	21	50-125W	3,129	\$198	HEX-021-A-CW-[voltage order code]-CAS
21	32	75-175W	4,431	\$204	HEX-021-B-CW-[voltage order code]-CAS
42	42	100-200W	6,258	\$271	HEX-042-A-CW-[voltage order code]-CAS
42	63	125-300W	8,862	\$284	HEX-042-B-CW-[voltage order code]-CAS
63	95	200-400W	13,293	\$378	HEX-063-B-CW-[voltage order code]-CAS
OPTIONAL UPGRADES				PRICE	ORDER CODE
120V BUTTON PHOTOCELL				\$18	PC1
208V - 277V BUTTON PHOTOCELL				\$18	PC2
EMERGENCY BATTERY BACKUP, 5W, 600 LUMENS, 90 MINUTES MUST PROVIDE EXACT VOLTAGE REQUIREMENTS				\$239	EM



CANOPY.W

LEDS	WATTAGE	REPLACES	NOMINAL LUMENS	PRICE	ORDER CODE
21	21	50-125W	3,129	\$174	HEX-021-A-CW-[voltage order code]-CAW
21	32	50-125W	4,431	\$180	HEX-021-B-CW-[voltage order code]-CAW
42	42	100-200W	6,258	\$246	HEX-042-A-CW-[voltage order code]-CAW
42	63	125-300W	8,862	\$259	HEX-042-B-CW-[voltage order code]-CAW
OPTIONAL UPGRADES				PRICE	ORDER CODE
120V BUTTON PHOTOCELL				\$18	PC1
208V - 277V BUTTON PHOTOCELL				\$18	PC2
EMERGENCY BATTERY BACKUP, 5W, 600 LUMENS, 90 MINUTES MUST PROVIDE EXACT VOLTAGE REQUIREMENTS				\$239	EM



CANOPY.X

LEDS	WATTAGE	REPLACES	NOMINAL LUMENS	PRICE	ORDER CODE
21	32	75-175W	4,431	\$292	HEX-021-B-CW-[voltage order code]-CAX
42	63	125-300W	8,862	\$371	HEX-042-B-CW-[voltage order code]-CAX
63	95	200-400W	13,293	\$464	HEX-063-B-CW-[voltage order code]-CAX
63	63	150-275W	9,387	\$460	HEX-063-PYR-A-CW-[voltage order code]-CAX
84	126	300-525W	17,724	\$531	HEX-084-B-CW-[voltage order code]-CAX
84	126	300-525W	17,724	\$550	HEX-084-PYR-B-CW-[voltage order code]-CAX
105	158	400-650W	22,155	\$564	HEX-105-B-CW-[voltage order code]-CAX
126	189	550-800W	26,586	\$606	HEX-126-B-CW-[voltage order code]-CAX
OPTIONAL UPGRADES				PRICE	ORDER CODE
347-480V UP TO 150W				\$76	HV1
347-480V GREATER THAN 150W				\$134	HV2
120V BUTTON PHOTOCELL				\$18	PC1
208V - 277V BUTTON PHOTOCELL				\$18	PC2
6' 16/3 600V STW CORD				\$40	CORD6
EMERGENCY BATTERY BACKUP, 5W, 600 LUMENS, 90 MINUTES MUST PROVIDE EXACT VOLTAGE REQUIREMENTS				\$239	EM
IF ORDERING A TWIST LOCK PLUG, MUST ORDER 6' 16/3 600V STW CORD					
L515P 125V TWIST LOCK PLUG				\$15	L515
L615P 250V TWIST LOCK PLUG				\$16	L615
L715P 277V TWIST LOCK PLUG				\$16	L715
L720P 277V TWIST LOCK PLUG				\$20	L720
L820P 347-480V TWIST LOCK PLUG				\$27	L820
L830P 347-480V TWIST LOCK PLUG				\$40	L830



CANOPY.Y

LEDS	WATTAGE	REPLACES	NOMINAL LUMENS	PRICE	ORDER CODE
42	63	125-300W	8,862	\$595	HEX-042-B-CW-[voltage order code]-CAY
63	95	200-400W	13,293	\$688	HEX-063-B-CW-[voltage order code]-CAY
84	126	300-525W	17,724	\$755	HEX-084-B-CW-[voltage order code]-CAY
126	189	550-800W	26,586	\$830	HEX-126-B-CW-[voltage order code]-CAY
OPTIONAL UPGRADES				PRICE	ORDER CODE
347-480V UPTO 150W				\$76	HV1
347-480V GREATER THAN 150W				\$134	HV2
120V BUTTON PHOTOCELL				\$18	PC1
208V - 277V BUTTON PHOTOCELL				\$18	PC2



CANOPY.Z

LEDS	WATTAGE	REPLACES	NOMINAL LUMENS	PRICE	ORDER CODE
42	63	125-300W	8,862	\$427	HEX-042-B-CW-[voltage order code]-CAZ
63	95	200-400W	13,293	\$531	HEX-063-PYR-B-CW-[voltage order code]-CAZ
OPTIONAL UPGRADES				PRICE	ORDER CODE
OCCUPANCY SENSOR WATTSTOPPER FS355				\$79	WOS
OCCUPANCY SENSOR WATTSTOPPER FS355 W/ STEP DIMMING				\$199	WOS-DIMM
MUST SPECIFY LENS WITH OCCUPANCY SENSOR LENS					
W/MAXIMUM 8' MOUNTING HEIGHT W/48' DIAMETER				\$6	FS-L2W
LENS W/MAXIMUM 20' MOUNTING HEIGHT W/40' DIAMETER				\$7	FS-L3W
HINGED QUICK MOUNT BRACKET				\$50	VNQM
EMERGENCY BATTERY BACKUP, 5W, 600 LUMENS, 90 MINUTES MUST PROVIDE EXACT VOLTAGE REQUIREMENTS				\$239	EM



COBRAHEAD.A (without Photocell)

LEDS	WATTAGE	REPLACES	NOMINAL LUMENS	PRICE	ORDER CODE
21	32	75-175W	4,431	\$280	HEX-021-B-CW-[voltage order code]-CBA
42	63	125-300W	8,862	\$360	HEX-042-B-CW-[voltage order code]-CBA
63	95	200-400W	13,293	\$463	HEX-063-B-CW-[voltage order code]-CBA
84	126	300-525W	17,724	\$540	HEX-084-B-CW-[voltage order code]-CBA
105	158	400-650W	22,155	\$574	HEX-105-B-CW-[voltage order code]-CBA
OPTIONAL UPGRADES				PRICE	ORDER CODE
347-480V UP TO 150W				\$76	HV1
347-480V GREATER THAN 150W				\$134	HV2

COBRAHEAD.APC (Integrated Receptacle & Twist Lock Photocell 120-277V)



LEDS	WATTAGE	REPLACES	NOMINAL LUMENS	PRICE	ORDER CODE
21	32	75-175W	4,431	\$334	HEX-021-B-CW-[voltage order code]-CBAPC
42	63	125-300W	8,862	\$396	HEX-042-B-CW-[voltage order code]-CBAPC
63	95	200-400W	13,293	\$516	HEX-063-B-CW-[voltage order code]-CBAPC
84	126	300-525W	17,724	\$592	HEX-084-B-CW-[voltage order code]-CBAPC
105	158	400-650W	22,155	\$626	HEX-105-B-CW-[voltage order code]-CBAPC
OPTIONAL UPGRADES				PRICE	ORDER CODE
347-480V UP TO 150W				\$76	HV1
347-480V GREATER THAN 150W				\$134	HV2



DOWNLIGHT.X

LEDS	WATTAGE	REPLACES	NOMINAL LUMENS	PRICE	ORDER CODE
21	21	50-125W	3,129	\$247	HEX-021-A-CW-[voltage order code]-DLX
21	32	75-175W	4,431	\$254	HEX-021-B-CW-[voltage order code]-DLX
OPTIONAL UPGRADES				PRICE	ORDER CODE
TWIST LOCK PHOTOCELL				\$34	TLPC



FLOODLIGHT.L

LEDS	WATTAGE	REPLACES	NOMINAL LUMENS	PRICE	ORDER CODE
21	32	75-175W	4,431	\$240	HEX-021-B-CW-[voltage order code]-FLL
42	63	125-300W	8,862	\$319	HEX-042-B-CW-[voltage order code]-FLL
63	95	200-400W	13,293	\$412	HEX-063-B-CW-[voltage order code]-FLL
84	126	300-525W	17,724	\$479	HEX-084-B-CW-[voltage order code]-FLL
OPTIONAL UPGRADES				PRICE	ORDER CODE
347-480V UP TO 150W				\$76	HV1
TRUNNION MOUNT				\$26	TR
SLIP FITTER MOUNT				\$46	SF
VISOR				\$38	V
SHIELD				\$39	SH
WIRE GUARD				\$26	WG



FLOODLIGHT.R

LEDS	WATTAGE	REPLACES	NOMINAL LUMENS	PRICE	ORDER CODE
21	21	50-125W	3,129	\$285	HEX-021-A-CW-[voltage order code]-FLR
21	32	75-175W	4,431	\$292	HEX-021-B-CW-[voltage order code]-FLR
42	42	100-200W	6,258	\$358	HEX-042-A-CW-[voltage order code]-FLR
42	63	125-300W	8,862	\$372	HEX-042-B-CW-[voltage order code]-FLR



FLOODLIGHT.S

LEDS	WATTAGE	REPLACES	NOMINAL LUMENS	PRICE	ORDER CODE
21	21	50-125W	3,129	\$176	HEX-021-A-CW-[voltage order code]-FLS
21	32	75-175W	4,431	\$183	HEX-021-B-CW-[voltage order code]-FLS
24	36	90-185W	5,064	\$194	LIN-024-B-CW-[voltage order code]-FLS
42	42	100-200W	6,258	\$248	HEX-042-A-CW-[voltage order code]-FLS
42	63	125-300W	8,862	\$262	HEX-042-B-CW-[voltage order code]-FLS
OPTIONAL UPGRADES				PRICE	ORDER CODE
120V BUTTON PHOTOCELL				\$18	PC1
208V - 277V BUTTON PHOTOCELL				\$18	PC2



FLOODLIGHT.XXL

LEDS	WATTAGE	REPLACES	NOMINAL LUMENS	PRICE	ORDER CODE
105	158	400-650W	22,155	\$751	HEX-105-B-CW-[voltage order code]-FLXXL
126	189	550-800W	26,586	\$792	HEX-126-B-CW-[voltage order code]-FLXXL
168	252	725-1200W	35,448	\$1044	HEX-168-B-CW-[voltage order code]-FLXXL
189	284	850-1300W	39,879	\$1086	HEX-189-B-CW-[voltage order code]-FLXXL
210	315	1000-1450W	44,310	\$1114	HEX-210-B-CW-[voltage order code]-FLXXL
252	378	1250-1700W	53,172	\$1208	HEX-252-B-CW-[voltage order code]-FLXXL
378	567	1500W+	79,758	\$1570	HEX-378-B-CW-[voltage order code]-FLXXL
OPTIONAL UPGRADES				PRICE	ORDER CODE
347-480V GREATER THAN 150W				\$134	HV2
347-480V GREATER THAN 300W				\$267	HV3
HANDLE YOKE MOUNT				\$34	HY
POLE TOP MOUNT				\$80	PT



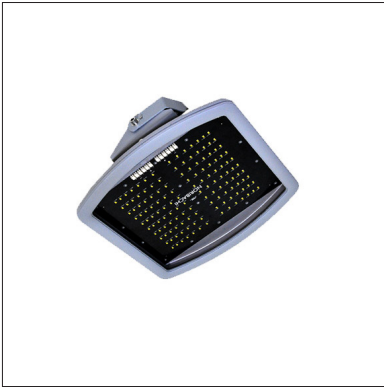
HIGHBAY.DL

LEDS	WATTAGE	REPLACES	NOMINAL LUMENS	PRICE	ORDER CODE
168	252	725-1200W	35,448	\$988	HEX-168-B-CW-[voltage order code]-HBDL
210	315	1000-1450W	44,310	\$1115	HEX-210-B-CW-[voltage order code]-HBDL
252	378	1250-1700W	53,172	\$1256	HEX-252-B-CW-[voltage order code]-HBDL
OPTIONAL UPGRADES				PRICE	ORDER CODE
347-480V GREATER THAN 150W				\$134	HV2
347-480V GREATER THAN 300W				\$267	HV3
6' 16/3 600V STW CORD				\$43	CORD6
OCCUPANCY SENSOR				\$114	OS
WIRE GUARD				\$103	WG
EMERGENCY BATTERY BACKUP, 5W, 600 LUMENS, 90 MINUTES MUST PROVIDE EXACT VOLTAGE REQUIREMENTS				\$254	EM
IF ORDERING A TWIST LOCK PLUG, MUST ORDER 6' 16/3 600V STW CORD					
L515P 125V TWIST LOCK PLUG				\$28	L515
L615P 250V TWIST LOCK PLUG				\$28	L615
L715P 277V TWIST LOCK PLUG				\$28	L715
L720P 277V TWIST LOCK PLUG				\$36	L720
L820P 347-480V TWIST LOCK PLUG				\$43	L820
L830P 347-480V TWIST LOCK PLUG				\$56	L830



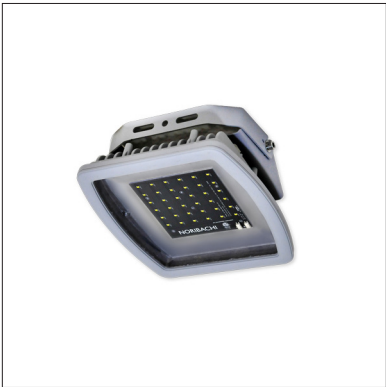
HIGHBAY.DM

LEDS	WATTAGE	REPLACES	NOMINAL LUMENS	PRICE	ORDER CODE
63	95	200-400W	13,293	\$454	HEX-063-B-CW-[voltage order code]-HBDM
84	126	300-525W	17,724	\$532	HEX-084-B-CW-[voltage order code]-HBDM
105	158	400-650W	22,155	\$591	HEX-105-B-CW-[voltage order code]-HBDM
OPTIONAL UPGRADES				PRICE	ORDER CODE
347-480V UP TO 150W				\$76	HV1
347-480V GREATER THAN 150W				\$134	HV2
6' 16/3 600V STW CORD				\$43	CORD6
OCCUPANCY SENSOR				\$114	OS
WIRE GUARD				\$90	WG
EMERGENCY BATTERY BACKUP, 5W, 600 LUMENS, 90 MINUTES MUST PROVIDE EXACT VOLTAGE REQUIREMENTS				\$254	EM
IF ORDERING A TWIST LOCK PLUG, MUST ORDER 6' 16/3 600V STW CORD					
L515P 125V TWIST LOCK PLUG				\$28	L515
L615P 250V TWIST LOCK PLUG				\$28	L615
L715P 277V TWIST LOCK PLUG				\$28	L715
L720P 277V TWIST LOCK PLUG				\$36	L720
L820P 347-480V TWIST LOCK PLUG				\$43	L820
L830P 347-480V TWIST LOCK PLUG				\$56	L830



HIGHBAY.M

LEDS	WATTAGE	REPLACES	NOMINAL LUMENS	PRICE	ORDER CODE
105	158	400-650W	22,155	\$596	HEX-105-B-CW-[voltage order code]-HBM
140	210	750-1000W	29,540	\$636	LIN-140-B-CW-[voltage order code]-HBM
168	252	725-1200W	35,448	\$924	HEX-168-B-CW-[voltage order code]-HBM
210	315	1000-1450W	44,310	\$1014	HEX-210-B-CW-[voltage order code]-HBM
OPTIONAL UPGRADES				PRICE	ORDER CODE
347-480V UPTO 150W				\$76	HV1
347-480V GREATER THAN 150W				\$134	HV2
6' 16/3 600V STW CORD				\$43	CORD6
EMERGENCY BATTERY BACKUP, 5W, 600 LUMENS, 90 MINUTES MUST PROVIDE EXACT VOLTAGE REQUIREMENTS				\$272	EM
IF ORDERING A TWIST LOCK PLUG, MUST ORDER 6' 16/3 600V STW CORD					
L515P 125V TWIST LOCK PLUG				\$26	L515
L615P 250V TWIST LOCK PLUG				\$26	L615
L715P 277V TWIST LOCK PLUG				\$26	L715
L720P 277V TWIST LOCK PLUG				\$30	L720
L820P 347-480V TWIST LOCK PLUG				\$38	L820
L830P 347-480V TWIST LOCK PLUG				\$47	L830
FROSTED LENS				\$36	FROST
MALLEABLE HOOK WITH 3/4" NPS THREADS				\$20	H3/4
OCCUPANCY SENSOR				\$114	OS
BI-LEVEL DIMMING				\$127	BLD
WIRE GUARD				\$88	WG
WET RATING				\$100	WET



HIGHBAY.S

LEDS	WATTAGE	REPLACES	NOMINAL LUMENS	PRICE	ORDER CODE
21	32	75-175W	4,431	\$266	HEX-021-B-CW-[voltage order code]-HBS
42	63	125-300W	8,862	\$344	HEX-042-B-CW-[voltage order code]-HBS
63	95	200-400W	13,293	\$439	HEX-063-B-CW-[voltage order code]-HBS
84	126	300-525W	17,724	\$504	HEX-084-B-CW-[voltage order code]-HBS
OPTIONAL UPGRADES				PRICE	ORDER CODE
347-480V UP TO 150W				\$76	HV1
6' 16/3 600V STW CORD				\$40	CORD6
EMERGENCY BATTERY BACKUP, 5W, 600 LUMENS, 90 MINUTES MUST PROVIDE EXACT VOLTAGE REQUIREMENTS				\$239	EM
IF ORDERING A TWIST LOCK PLUG, MUST ORDER 6' 16/3 600V STW CORD					
L515P 125V TWIST LOCK PLUG				\$15	L515
L615P 250V TWIST LOCK PLUG				\$16	L615
L715P 277V TWIST LOCK PLUG				\$16	L715
L720P 277V TWIST LOCK PLUG				\$20	L720
L820P 347-480V TWIST LOCK PLUG				\$27	L820
L830P 347-480V TWIST LOCK PLUG				\$40	L830
FROSTED LENS				\$36	FROST
MALLEABLE HOOK WITH 3/4" NPS THREADS				\$20	H3/4
OCCUPANCY SENSOR				\$114	OS
BI-LEVEL DIMMING				\$127	BLD
WIRE GUARD				\$62	WG
WET RATING				\$100	WET



MAX TROFFER

LEDS	WATTAGE	REPLACES	NOMINAL LUMENS	PRICE	ORDER CODE
NO LENS, CLIPS					
378	194	400-600W	20,429	\$572	LINL-378-B-CW-[voltage order code]-MAXTA
505	260	500-750W	27,279	\$639	LINL-505-B-CW-[voltage order code]-MAXTA
756	389	750-1000W	40,812	\$860	LINL-756-B-CW-[voltage order code]-MAXTA
WITH LENS, CLIPS					
378	194	400-600W	20,429	\$652	LINL-378-B-CW-[voltage order code]-MAXTB
505	260	500-750W	27,279	\$719	LINL-505-B-CW-[voltage order code]-MAXTB
756	389	750-1000W	40,812	\$954	LINL-756-B-CW-[voltage order code]-MAXTB
OPTIONAL UPGRADES				PRICE	ORDER CODE
OCCUPANCY SENSOR				\$114	OS
BI-LEVEL DIMMING				\$127	BLD

LOWBAY.2



LEDS	WATTAGE	REPLACES	NOMINAL LUMENS	PRICE	ORDER CODE
24	24	60-125W	3,576	\$166	LIN-024-A-CW-[voltage order code]-LB2
24	36	90-185W	5,064	\$172	LIN-024-B-CW-[voltage order code]-LB2
36	54	100-225W	7,596	\$234	LIN-036-B-CW-[voltage order code]-LB2
48	72	150-320W	10,128	\$300	LIN-048-B-CW-[voltage order code]-LB2
54	81	180-360W	11,394	\$318	LIN-054-B-CW-[voltage order code]-LB2
72	108	225-435W	15,192	\$398	LIN-072-B-CW-[voltage order code]-LB2
OPTIONAL UPGRADES				PRICE	ORDER CODE
347-480V UP TO 150W				\$76	HV1
MOUNTING BRACKETS				\$7	BRK
EMERGENCY BATTERY BACKUP, 5W, 600 LUMENS, 90 MINUTES MUST PROVIDE EXACT VOLTAGE REQUIREMENTS				\$239	EM
120V BUTTON PHOTOCELL				\$18	PC1
208V - 277V BUTTON PHOTOCELL				\$18	PC2
STAINLESS STEEL HARDWARE				\$36	ST
OCCUPANCY SENSOR				\$114	OS

LOWBAY.4



LEDS	WATTAGE	REPLACES	NOMINAL LUMENS	PRICE	ORDER CODE
24	36	90-185W	5,064	\$183	LIN-024-B-CW-[voltage order code]-LB4
36	54	100-225W	7,596	\$243	LIN-036-B-CW-[voltage order code]-LB4
48	72	150-320W	10,128	\$311	LIN-048-B-CW-[voltage order code]-LB4
54	81	180-360W	11,394	\$328	LIN-054-B-CW-[voltage order code]-LB4
72	108	225-435W	15,192	\$408	LIN-072-B-CW-[voltage order code]-LB4
84	126	300-525W	17,724	\$418	LIN-084-B-CW-[voltage order code]-LB4
OPTIONAL UPGRADES				PRICE	ORDER CODE
347-480V UPTO 150W				\$76	HV1
IP 67 RATING				\$67	IP67
MOUNTING BRACKETS				\$14	BRK
EMERGENCY BATTERY BACKUP, 5W, 600 LUMENS, 90 MINUTES MUST PROVIDE EXACT VOLTAGE REQUIREMENTS				\$239	EM
120V BUTTON PHOTOCELL				\$18	PC1
208V - 277V BUTTON PHOTOCELL				\$18	PC2
STAINLESS STEEL HARDWARE				\$51	ST
OCCUPANCY SENSOR				\$114	OS



LOWBAY.8 MINIMUM ORDER QUANTITY: 50

LEDS	WATTAGE	REPLACES	NOMINAL LUMENS	PRICE	ORDER CODE
48	48	100-225W	7,152	\$322	LIN-048-A-CW-[voltage order code]-LB8
60	60	130-275W	8,940	\$378	LIN-060-A-CW-[voltage order code]-LB8
72	108	225-435W	15,192	\$450	LIN-072-B-CW-[voltage order code]-LB8
84	84	200-350W	12,516	\$468	LIN-084-A-CW-[voltage order code]-LB8
84	126	300-525W	17,724	\$478	LIN-084-B-CW-[voltage order code]-LB8
96	144	320-600W	20,256	\$492	LIN-096-B-CW-[voltage order code]-LB8
108	162	400-750W	22,788	\$519	LIN-108-B-CW-[voltage order code]-LB8
120	180	450-850W	25,320	\$572	LIN-120-B-CW-[voltage order code]-LB8
132	198	525-925W	27,852	\$652	LIN-132-B-CW-[voltage order code]-LB8
156	234	650-1075W	32,916	\$759	LIN-156-B-CW-[voltage order code]-LB8
180	270	825-1275W	37,980	\$799	LIN-180-B-CW-[voltage order code]-LB8
OPTIONAL UPGRADES				PRICE	ORDER CODE
347-480V UP TO 150W				\$76	HV1
347-480V GREATER THAN 150W				\$134	HV2
IP 67 RATING				\$100	IP67
MOUNTING BRACKETS				\$20	BRK
EMERGENCY BATTERY BACKUP, 5W, 600 LUMENS, 90 MINUTES MUST PROVIDE EXACT VOLTAGE REQUIREMENTS				\$239	EM
120V BUTTON PHOTOCELL				\$18	PC1
208V - 277V BUTTON PHOTOCELL				\$18	PC2
STAINLESS STEEL HARDWARE				\$51	ST
OCCUPANCY SENSOR				\$114	OS



SHOEBOX.L

LEDS	WATTAGE	REPLACES	NOMINAL LUMENS	PRICE	ORDER CODE
168	252	725-1200W	35,448	\$1064	HEX-168-B-CW-[voltage order code]-SBL
210	315	1000-1450W	44,310	\$1154	HEX-210-B-CW-[voltage order code]-SBL
252	378	1250-1700W	53,172	\$1228	HEX-252-B-CW-[voltage order code]-SBL
OPTIONAL UPGRADES				PRICE	ORDER CODE
347-480V GREATER THAN 150W				\$134	HV2
347-480V GREATER THAN 300W				\$267	HV3
TRUNNION MOUNT				\$26	TR
SLIP FITTER MOUNT				\$47	SF
6" ARM MOUNT				\$46	AM6
10" ARM MOUNT				\$70	AM10
VISOR				\$87	V
SHIELD				\$87	SH
WIRE GUARD				\$62	WG
WALL MOUNT BRACKET				\$79	SQBRK
POLE MOUNTED OCCUPANCY SENSOR				\$230	PMOCC
EMERGENCY BATTERY BACKUP, 5W, 600 LUMENS, 90 MINUTES MUST PROVIDE EXACT VOLTAGE REQUIREMENTS				\$239	EM



SHOEBOX.M

LEDS	WATTAGE	REPLACES	NOMINAL LUMENS	PRICE	ORDER CODE
63	95	200-400W	13,293	\$448	HEX-063-B-CW-[voltage order code]-SBM
72	108	225-435W	15,192	\$518	LIN-072-B-CW-[voltage order code]-SBM
84	126	300-525W	17,724	\$524	HEX-084-B-CW-[voltage order code]-SBM
105	158	400-650W	22,155	\$558	HEX-105-B-CW-[voltage order code]-SBM
126	189	550-800W	26,586	\$599	HEX-126-B-CW-[voltage order code]-SBM
140	210	750-1000W	29,540	\$658	LIN-140-B-CW-[voltage order code]-SBM
OPTIONAL UPGRADES				PRICE	ORDER CODE
347-480V UP TO 150W				\$76	HV1
347-480V GREATER THAN 150W				\$134	HV2
120V BUTTON PHOTOCELL				\$18	PC1
208V - 277V BUTTON PHOTOCELL				\$18	PC2
TRUNNION MOUNT				\$26	TR
SLIP FITTER MOUNT				\$46	SF
6" ARM MOUNT				\$46	AM6
10" ARM MOUNT				\$70	AM10
HEAVY DUTY ADJUSTABLE DIRECT MOUNT POLE ARM				\$83	FLAM
VISOR				\$47	V
SHIELD				\$46	SH
WIRE GUARD				\$36	WG
WALL MOUNT BRACKET				\$79	SQBRK
POLE MOUNTED OCCUPANCY SENSOR				\$230	PMOCC
HEAVY-DUTY ADJUSTABLE DIRECT POLE ARM				\$62	FLAM
EMERGENCY BATTERY BACKUP, 5W, 600 LUMENS, 90 MINUTES MUST PROVIDE EXACT VOLTAGE REQUIREMENTS				\$239	EM



SHOEBOX.S

LEDS	WATTAGE	REPLACES	NOMINAL LUMENS	PRICE	ORDER CODE
21	32	75-175W	4,431	\$230	HEX-021-B-CW-[voltage order code]-SBS
42	63	125-300W	8,862	\$316	HEX-042-B-CW-[voltage order code]-SBS
63	95	200-400W	13,293	\$420	HEX-063-B-CW-[voltage order code]-SBS
OPTIONAL UPGRADES				PRICE	ORDER CODE
347-480V UP TO 150W				\$76	HV1
120V BUTTON PHOTOCELL				\$18	PC1
208V - 277V BUTTON PHOTOCELL				\$18	PC2
TRUNNION MOUNT				\$26	TR
SLIP FITTER MOUNT				\$46	SF
6" ARM MOUNT				\$46	AM6
6" ARM MOUNT (FOR ROUND POLE) MUST NOTE POLE DIAMETER ON PURCHASE ORDER				\$70	AM6R
10" ARM MOUNT				\$70	AM10
WALL MOUNT BRACKET				\$79	SQBRK
POLE MOUNTED OCCUPANCY SENSOR				\$230	PMOCC
EMERGENCY BATTERY BACKUP, 5W, 600 LUMENS, 90 MINUTES MUST PROVIDE EXACT VOLTAGE REQUIREMENTS				\$239	EM



WALLPACK.C

LEDS	WATTAGE	REPLACES	NOMINAL LUMENS	PRICE	ORDER CODE
21	21	50-125W	3,129	\$216	HEX-021-A-CW-[voltage order code]-WPC
21	32	75-175W	4,431	\$223	HEX-021-B-CW-[voltage order code]-WPC
24	36	90-185W	5,064	\$239	LIN-024-B-CW-[voltage order code]-WPC
42	63	125-300W	8,862	\$303	HEX-042-B-CW-[voltage order code]-WPC
OPTIONAL UPGRADES				PRICE	ORDER CODE
120V BUTTON PHOTOCELL				\$18	PC1
208V - 277V BUTTON PHOTOCELL				\$18	PC2
EMERGENCY BATTERY BACKUP, 5W, 600 LUMENS, 90 MINUTES MUST PROVIDE EXACT VOLTAGE REQUIREMENTS				\$239	EM



WALLPACK.D

LEDS	WATTAGE	REPLACES	NOMINAL LUMENS	PRICE	ORDER CODE
42	63	125-300W	8,862	\$379	HEX-042-B-CW-[voltage order code]-WPD
54	81	180-360W	11,394	\$456	LIN-054-B-CW-[voltage order code]-WPD
63	95	200-400W	13,293	\$472	HEX-063-B-CW-[voltage order code]-WPD
OPTIONAL UPGRADES				PRICE	ORDER CODE
120V BUTTON PHOTOCELL				\$18	PC1
208V - 277V BUTTON PHOTOCELL				\$18	PC2
EMERGENCY BATTERY BACKUP, 5W, 600 LUMENS, 90 MINUTES MUST PROVIDE EXACT VOLTAGE REQUIREMENTS				\$239	EM



WALLPACK.H

LEDS	WATTAGE	REPLACES	NOMINAL LUMENS	PRICE	ORDER CODE
21	21	50-125W	3,129	\$320	HEX-021-A-CW-[voltage order code]-WPH
21	32	75-175W	4,431	\$327	HEX-021-B-CW-[voltage order code]-WPH
42	42	100-200W	6,258	\$392	HEX-042-A-CW-[voltage order code]-WPH
42	63	125-300W	8,862	\$406	HEX-042-B-CW-[voltage order code]-WPH
63	95	200-400W	13,293	\$496	HEX-063-B-CW-[voltage order code]-WPH
84	126	300-525W	17,724	\$562	HEX-084-B-CW-[voltage order code]-WPH



WALLPACK.J

LEDS	WATTAGE	REPLACES	NOMINAL LUMENS	PRICE	ORDER CODE
21	21	50-125W	3,129	\$320	HEX-021-A-CW-[voltage order code]-WPJ
21	32	75-175W	4,431	\$327	HEX-021-B-CW-[voltage order code]-WPJ
42	42	100-200W	6,258	\$392	HEX-042-A-CW-[voltage order code]-WPJ
42	63	125-300W	8,862	\$406	HEX-042-B-CW-[voltage order code]-WPJ
63	95	200-400W	13,293	\$496	HEX-063-B-CW-[voltage order code]-WPJ



WALLPACK.K

LEDS	WATTAGE	REPLACES	NOMINAL LUMENS	PRICE	ORDER CODE
21	21	50-125W	3,129	\$320	HEX-021-A-CW-[voltage order code]-WPK
21	32	75-175W	4,431	\$327	HEX-021-B-CW-[voltage order code]-WPK
42	42	100-200W	6,258	\$392	HEX-042-A-CW-[voltage order code]-WPK
42	63	125-300W	8,862	\$406	HEX-042-B-CW-[voltage order code]-WPK



WALLPACK.L

LEDS	WATTAGE	REPLACES	NOMINAL LUMENS	PRICE	ORDER CODE
42	63	125-300W	8,862	\$390	HEX-042-B-CW-[voltage order code]-WPL
63	95	200-400W	13,293	\$483	HEX-063-B-CW-[voltage order code]-WPL
84	126	300-525W	17,724	\$550	HEX-084-B-CW-[voltage order code]-WPL
OPTIONAL UPGRADES				PRICE	ORDER CODE
120V BUTTON PHOTOCELL				\$18	PC1
208V - 277V BUTTON PHOTOCELL				\$18	PC2



WALLPACK.M

LEDS	WATTAGE	REPLACES	NOMINAL LUMENS	PRICE	ORDER CODE
21	21	50-125W	3,129	\$168	HEX-021-A-CW-[voltage order code]-WPM
21	32	75-175W	4,431	\$176	HEX-021-B-CW-[voltage order code]-WPM
42	42	100-200W	6,258	\$242	HEX-042-A-CW-[voltage order code]-WPM
42	63	125-300W	8,862	\$255	HEX-042-B-CW-[voltage order code]-WPM
OPTIONAL UPGRADES				PRICE	ORDER CODE
120V BUTTON PHOTOCELL				\$18	PC1
208V - 277V BUTTON PHOTOCELL				\$18	PC2
VISOR				\$23	V
SHIELD				\$28	SH
WIRE GUARD				\$18	WG



WALLPACK.R

LEDS	WATTAGE	REPLACES	NOMINAL LUMENS	PRICE	ORDER CODE
21	21	50-125W	3,129	\$195	HEX-021-A-CW-[voltage order code]-WPR
21	32	75-175W	4,431	\$202	HEX-021-B-CW-[voltage order code]-WPR
OPTIONAL UPGRADES				PRICE	ORDER CODE
120V BUTTON PHOTOCELL				\$18	PC1
208V - 277V BUTTON PHOTOCELL				\$18	PC2



WALLPACK.S

LEDS	WATTAGE	REPLACES	NOMINAL LUMENS	PRICE	ORDER CODE
21	21	50-125W	3,129	\$156	HEX-021-A-CW-[voltage order code]-WPS
21	32	75-175W	4,431	\$163	HEX-021-B-CW-[voltage order code]-WPS
OPTIONAL UPGRADES				PRICE	ORDER CODE
120V BUTTON PHOTOCELL				\$18	PC1
208V - 277V BUTTON PHOTOCELL				\$18	PC2



WALLPACK.X

LEDS	WATTAGE	REPLACES	NOMINAL LUMENS	PRICE	ORDER CODE
18	18	70-100W	2,682	\$188	LIN-018-A-CW-[voltage order code]-WPX
18	27	65-140W	3,798	\$195	LIN-018-B-CW-[voltage order code]-WPX
24	36	90-185W	5,064	\$207	LIN-024-B-CW-[voltage order code]-WPX
30	45	100-200W	6,330	\$260	LIN-030-B-CW-[voltage order code]-WPX
36	54	100-225W	7,596	\$267	LIN-036-B-CW-[voltage order code]-WPX
OPTIONAL UPGRADES				PRICE	ORDER CODE
120V BUTTON PHOTOCELL				\$18	PC1
208V - 277V BUTTON PHOTOCELL				\$18	PC2
VISOR				\$28	V
EMERGENCY BATTERY BACKUP, 5W, 600 LUMENS, 90 MINUTES MUST PROVIDE EXACT VOLTAGE REQUIREMENTS				\$239	EM



WALLPACK.Y

LEDS	WATTAGE	REPLACES	NOMINAL LUMENS	PRICE	ORDER CODE
42	63	125-300W	8,862	\$356	HEX-042-B-CW-[voltage order code]-WPY
54	81	180-360W	11,394	\$338	LIN-054-B-CW-[voltage order code]-WPY
63	95	200-400W	13,293	\$452	HEX-063-B-CW-[voltage order code]-WPY
72	108	225-435W	15,192	\$467	LIN-072-B-CW-[voltage order code]-WPY
84	126	300-525W	17,724	\$510	HEX-084-B-CW-[voltage order code]-WPY
OPTIONAL UPGRADES				PRICE	ORDER CODE
347-480V UP TO 150W				\$76	HV1
120V BUTTON PHOTOCELL				\$18	PC1
208V - 277V BUTTON PHOTOCELL				\$18	PC2
EMERGENCY BATTERY BACKUP, 5W, 600 LUMENS, 90 MINUTES MUST PROVIDE EXACT VOLTAGE REQUIREMENTS				\$239	EM



WALLPACK.Z

LEDS	WATTAGE	REPLACES	NOMINAL LUMENS	PRICE	ORDER CODE
21	32	75-175W	4,431	\$259	HEX-021-B-CW-[voltage order code]-WPZ
42	63	125-300W	8,862	\$338	HEX-042-B-CW-[voltage order code]-WPZ
63	95	200-400W	13,293	\$431	HEX-063-B-CW-[voltage order code]-WPZ
OPTIONAL UPGRADES				PRICE	ORDER CODE
120V BUTTON PHOTOCELL				\$18	PC1
208V - 277V BUTTON PHOTOCELL				\$18	PC2
EMERGENCY BATTERY BACKUP, 5W, 600 LUMENS, 90 MINUTES MUST PROVIDE EXACT VOLTAGE REQUIREMENTS				\$239	EM

RETROFIT PRICING GUIDE 2014

****MUST FOLLOW RETROFIT PROJECT INSTRUCTIONS & GUIDELINES BELOW:****

1. CONFIRM ORDER CODE AND CORRECT LIGHT ENGINE FOR APPLICATION
2. ISSUE PO
3. FILL OUT CUSTOMER RECEIVING FORM AND REFERENCE PO#
4. SEND ONE OF EACH EXISTING FIXTURE TYPE TO NORIBACHI (ATTACH COPY OF CUSTOMER RECEIVING FORM) - Drawing may suffice
5. EMAIL PO, CUSTOMER RECEIVING FORM AND TRACKING



HEX LIGHT ENGINE RETROFITS

LEDS	WATTAGE	REPLACES	NOMINAL LUMENS	PRICE	ORDER CODE
21	21	50-125W	3,129	\$126	HEX-021-A-CW-MT
21	32	75-175W	4,431	\$135	HEX-021-B-CW-MT
42	42	100-200W	6,258	\$246	HEX-042-A-CW-MT
42	63	125-300W	8,862	\$262	HEX-042-B-CW-MT
63	95	200-400W	13,293	\$455	HEX-063-B-CW-MT
84	126	300-525W	17,724	\$552	HEX-084-B-CW-MT
105	158	400-650W	22,155	\$598	HEX-105-B-CW-MT
126	189	550-800W	26,586	\$656	HEX-126-B-CW-MT
168	252	725-1200W	35,448	\$996	HEX-168-B-CW-MT
189	284	850-1300W	39,879	\$1055	HEX-189-B-CW-MT
210	315	1000-44,310	1450W	\$1124	HEX-210-B-CW-MT
252	378	1250-53,172	1700W	\$1230	HEX-252-B-CW-MT
378	567	1500W+	79,758	\$1748	HEX-378-B-CW-MT
OPTIONAL UPGRADES				PRICE	ORDER CODE
347-480V UP TO 150W				\$76	HV1
347-480V GREATER THAN 150W				\$134	HV2
347-480V GREATER THAN 300W				\$267	HV3

LIN LIGHT ENGINE RETROFITS



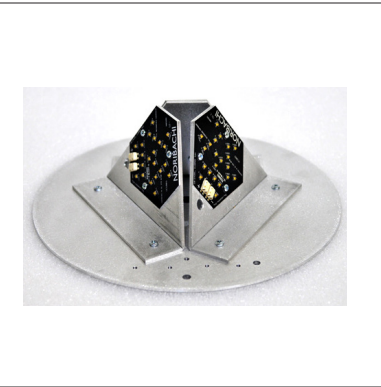
LEDS	WATTAGE	REPLACES	NOMINAL LUMENS	PRICE	ORDER CODE
18	18	50-100W	2,682	\$140	LIN-018-A-CW-MT
18	27	65-140W	3,798	\$150	LIN-018-B-CW-MT
24	24	60-125W	3,576	\$175	LIN-024-A-CW-MT
24	36	90-185W	5,064	\$214	LIN-024-B-CW-MT
30	45	100-200W	6,330	\$263	LIN-030-B-CW-MT
36	54	120-225W	7,596	\$273	LIN-036-B-CW-MT
48	72	150-320W	10,128	\$384	LIN-048-B-CW-MT
54	81	180-360W	11,394	\$404	LIN-054-B-CW-MT
72	108	225-435W	15,192	\$540	LIN-072-B-CW-MT
140	210	750-1000W	29,540	\$739	LIN-140-B-CW-MT
OPTIONAL UPGRADES				PRICE	ORDER CODE
347-480V UPTO 150W				\$76	HV1
347-480V GREATER THAN 150W				\$134	HV2

FIN LIN LIGHT ENGINE RETROFITS



LEDS	WATTAGE	REPLACES	NOMINAL LUMENS	PRICE	ORDER CODE
24	24	60-125W	3,576	\$254	LIN-024-FIN-A-CW-MT
24	36	90-185W	5,064	\$292	LIN-024-FIN-B-CW-MT
30	45	100-200W	6,330	\$342	LIN-030-FIN-B-CW-MT
36	54	120-225W	7,596	\$391	LIN-036-FIN-B-CW-MT
42	63	125-300W	8,862	\$440	LIN-042-FIN-B-CW-MT
OPTIONAL UPGRADES				PRICE	ORDER CODE
347-480V UP TO 150W				\$76	HV1

PYR HEX LIGHT ENGINE RETROFITS



LEDS	WATTAGE	REPLACES	NOMINAL LUMENS	PRICE	ORDER CODE
63	63	150-275W	9,387	\$484	HEX-063-PYR-A-CW-MT
OPTIONAL UPGRADES				PRICE	ORDER CODE
347-480V UP TO 150W				\$76	HV1