

LED RETROFIT LIGHT (UL and DLC)

ECO-RTK series

Looking to Retrofit your HID Fixtures? These LED Engines are the perfect solution!

Model Numbers

ECO-RKT-30W-LV
ECO-RKT-40W-LV
ECO-RTK-60W-LV
ECO-RTK-80W-LV
ECO-RTK-100W-LV
ECO-RTK-120W-LV
ECO-RTK-150W-LV
ECO-RTK-185W-LV
ECO-RTK-240W-LV
ECO-RTK-320W-LV
ECO-RTK-400W-LV

ECO-RTK-100W-HV
ECO-RTK-120W-HV
ECO-RTK-150W-HV
ECO-RTK-200W-HV
ECO-RTK-240W-HV
ECO-RTK-320W-HV
ECO-RTK-450W-HV



Equivalent HPS/MH

The RTK series products are ideal retrofitting of Parking Lot Shoe Boxes, Street lights, Flood Lights, Wall Pack, High Bays and Canopies. The smart rotatable bracket make these LED Retrofit kits are able to easy and fast replacing HPS/MH bulbs from 150W to 1000W.

30W.....2800Lumens,Which replaces 150W MH or HPS

40W.....3500Lumens,Which replaces 175W MH or HPS

60W.....5500Lumens,Which replaces 250W MH or HPS

80W.....7500Lumens,Which replaces 300W MH or HPS

100W.....9500Lumens,Which replaces 400W MH or HPS (used in Wall pack and Canopies)

120W.....11400Lumens,Which replaces 400W MH or HPS,used in all situations

150W.....14000Lumens,Which replaces 500W MH or HPS,used in all situations

185W.....17000Lumens,Which replaces 600W MH or HPS,

240W.....23000Lumens,Which replaces 750W MH or HPS,

320W.....28000Lumens,Which replaces 1000W MH or HPS,

400W.....36000Lumens,Which replaces 1000W MH or HPS,

450W.....42000Lumens,Which replaces 1500W MH or HPS,

Dimensions (L x W x H):

30-60W: 4.7 x 4.7 x 1.3"

80-150W: 7.1 x 5.5 x 1.3"

185-240W: 10.4 x 6.3 x 1.4"

320-450W: 12.6 x 9.3 x 1.5"

INSTALLATION PROFILE

* **DANGER** - READ ALL INSTRUCTIONS BEFORE INSTALLATION

* **USE A LICENSED ELECTRICIAN TO PERFORM THE INSTALLATION!**

* **WARNING** * TURN OFF ALL POWER TO THE FIXTURE BEFORE INSTALLATION

* **NOTE** *

1. For Longest Life & Heat Dissipation - PERMANENTLY REMOVE THE FIXTURE'S REFLECTOR. RETROFIT WARRANTY IS VOID IF THE FIXTURE'S REFLECTOR IS NOT REMOVED. UNDER NO CIRCUMSTANCES IS IT OK TO LEAVE THE REFLECTOR IN THE FIXTURE. REMOVING THE REFLECTOR PROVIDES EXTRA AIR CAPACITY THAT IS USED TO KEEP THE LED HEAD AND DRIVER COOL.

2. NEVER TAKE THE RETROFIT APART. NEVER TOUCH THE LEDs. THIS WAY MAY VOID THE WARRANTY.

3. BE SURE THAT NOTHING WILL TOUCH OR FALL INTO THE FAN BLADES AFTER THE FIXTURE IS MOUNTED.

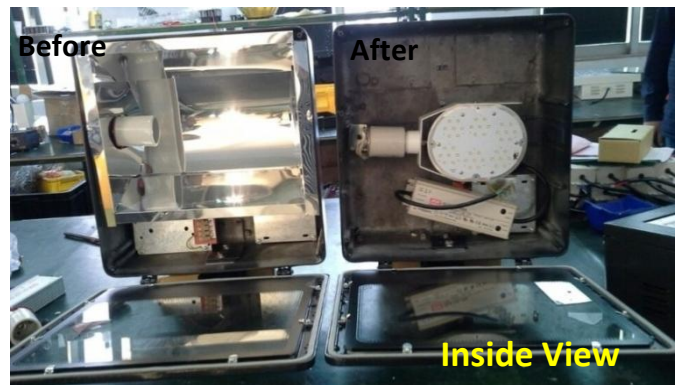
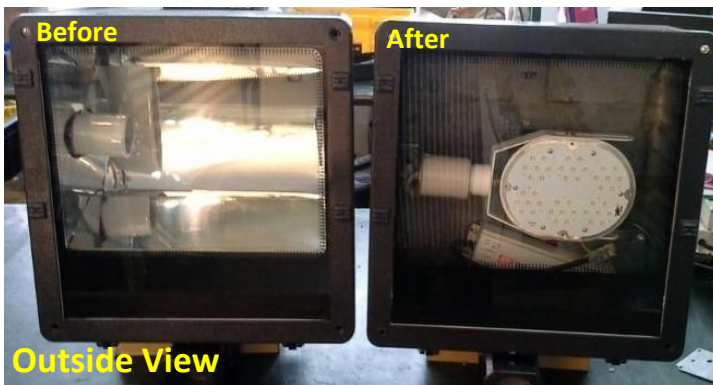
Shoe Boxes and Flood Lights

Step-1 Remove existing ballast, bulb and reflector.

Step-2 Mount the LED driver at the place of ballast.

Step-3 Inset the retrofit kit to the E26/E39 base, Adjust the retrofit head angle and position so that it provides the best lighting.

Step-4 Connect the driver's output wires to the retrofit kit.



* **TIPS*** You may customize the mounting plate or bracket by drilling holes so it will be mount into the fixture's existing screw posts.



Wall Packs & Canopies

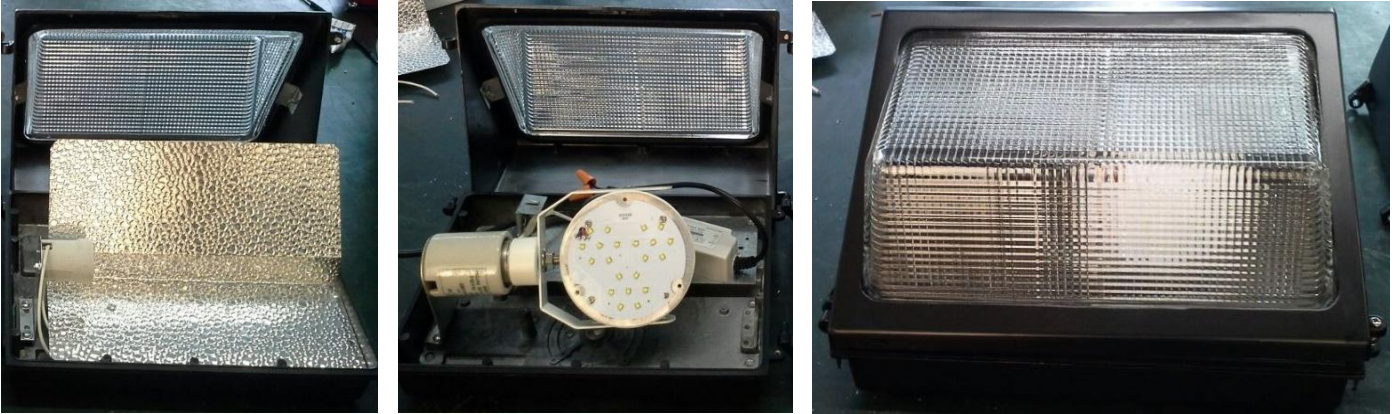
Step-1 Remove existing ballast, bulb and reflector.

Step-2 Mount the LED driver at the place of ballast.

Step-3 Inset the retrofit kit to the E26/E39 base, Adjust the retrofit head angle and position so that it provides the best lighting.

Step-4 Connect the driver's output wires to the retrofit kit.

TIPs You may customize the driver mounting plate by drilling holes so that it will mount into the fixture's existing screw posts.



* TIPs* You may customize the mounting plate or bracket by drilling holes so it will be mount into the fixture's existing screw posts.



Street Lights

* **TIPS*** The original mogul base was attached to the reflector when it was removed,so we customized a plate that is an easy install.

Step-1 Remove existing ballast, bulb and reflector.

Step-2 Mount the LED driver at the palace of ballast.

Step-3 Fix the retrofit kit on the braket, then ajust the retrofit head angle and position so that it provides the best lighting.

Step-4 Connect the driver's output wires to the retrofit kit.



High Bays

Step-1 Remove existing ballast, bulb.

Step-2 Mount the LED driver at the palace of ballast.

Step-3 Inset the retrofit kit to the E26/E39 base, Adjust the retrofit head angle and position so that it provides the best lighting.



* **TIPS*** You may customize the mounting plate or braket to mount the dirver if needed.

WARNING:

The unit designed for years with minimum care.For optimum performance,periodically clean the reflector and lens with a mild, non-abrasive glass cleaner and soft cloth. Do NOT use solvents of cleaners containing abrasive agents.When cleaning the fixture,make sure you have the power turned off and do not sprayliquid cleaner directly onto the LED,socket,or wiring.
