

Panelized Steel Hybrid Building Shell

HOUSING SOLUTIONS FOR EVERYONE

Presented by
Eco-\$mart, Inc.
(888)329-2705 ph
info@eco-smart.com

PURPOSE

To provide affordable, high quality housing and building alternatives that are:

- Cost effective**
- Very durable – 50 year plus houses**
- Efficiently designed**
- Quick to build**

Briefing Outline

- **The companies**
- **The product**
- **The process**
- **Some alternative business models**
- **Conclusion**

THE COMPANIES

Beauchamp and Associates, LLC (International JV Management)

- **Headed by retired LT General, US Army.**
- **Managed over ½ billion dollars in construction in middle east in 1999-2000.**
- **Over 40 years of military and commercial experience.**
- **Senior VP for five years with an international engineering, construction and project management company.**

THE COMPANIES

PSHBS Manufacturer

- 40 years of building experience**
- Products: single family and multi-family homes, apartments, senior living centers, hospitals and commercial buildings.**
- Constructed thousands of housing units**
- Invented the unique “factory in a box”**
- Quick start up – flexibility**
- Design and build to your requirements: style, size or product.**

The Product

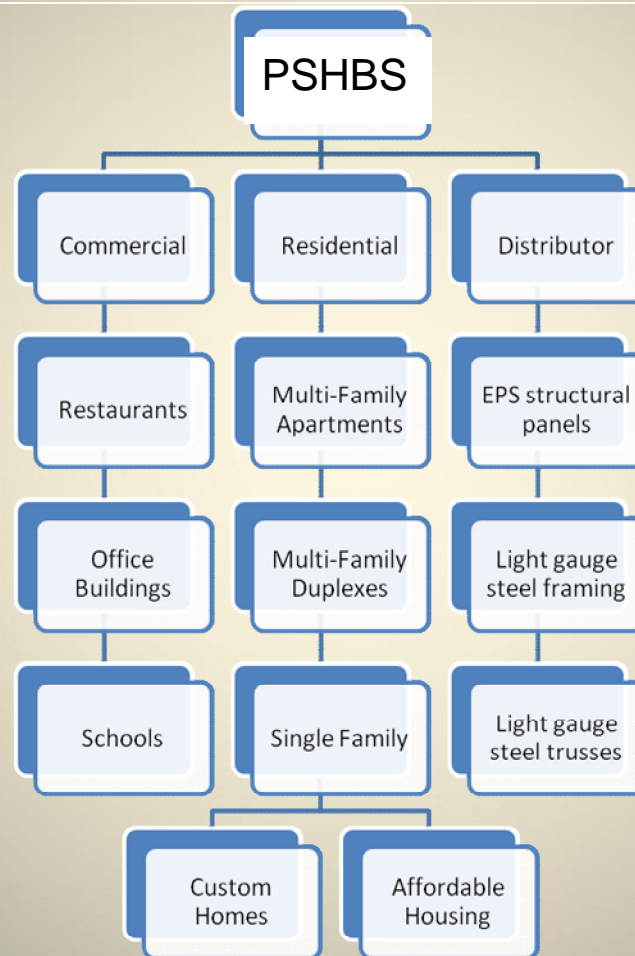
STEEL INSULATED PANEL BUILDING SYSTEM

- Superior resistance to seismic activity
- Resistant to Windstorms (160 MPH/240 km/h)
- Thermal-steel structures
- Quick to construct compared to traditional building techniques
- Non combustible materials
- Thermal efficiency
- Resistant to termite and fungus
- Environmentally Responsible

BUILDING WITH THE STRENGTH OF STEEL

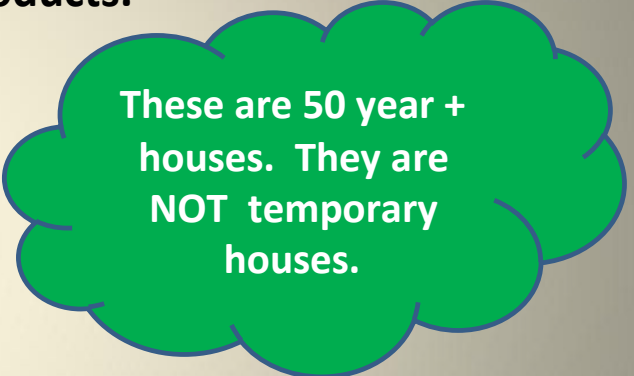
SUPERIOR QUALITY – 50 YEAR PLUS LIFE SPAN!

Products Available



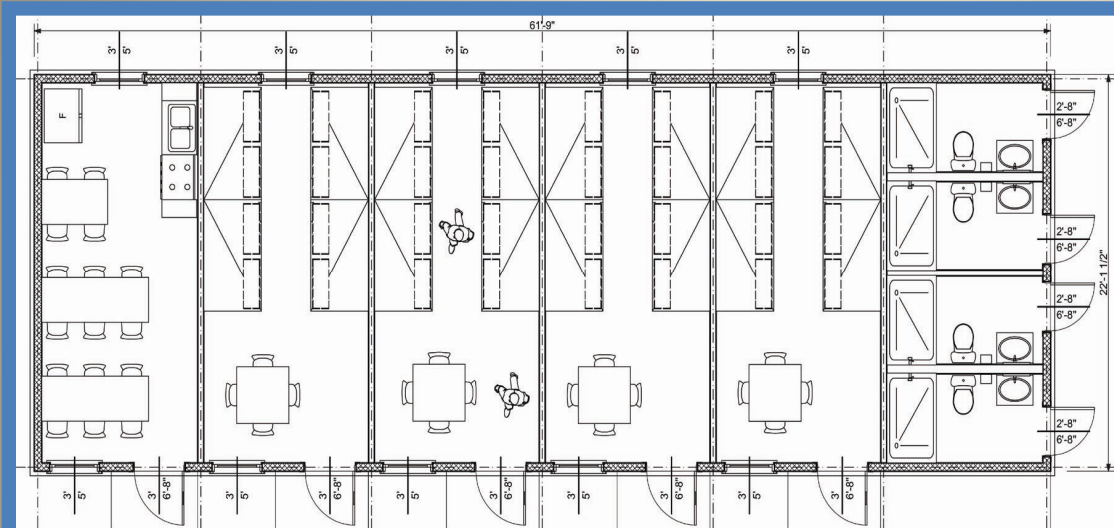
IMPORTANT FEATURES OF THIS BUILDING TECHNOLOGY

- Low cost to build.
- Very quick to build.
- Very flexible design with a wide range of products.
- An affordable house for every need.
- Will train and employ local labor.
- Complies with International Building Code
- Very flexible production model:
 - Build a house
 - Build a neighborhood
 - Build a community – Schools, Clinics, Hospitals, Businesses
- Very durable:
 - Steel frame construction
 - Earthquake resistant
 - Fire resistant
 - Vermin resistant
 - Water resistant
 - Hurricane proof: 160 MPH/240 Kilometers per hour wind load resistance

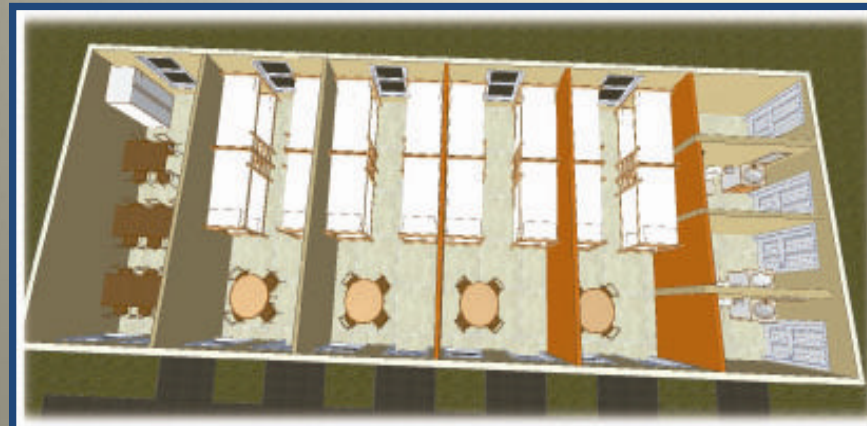


These are 50 year + houses. They are **NOT** temporary houses.

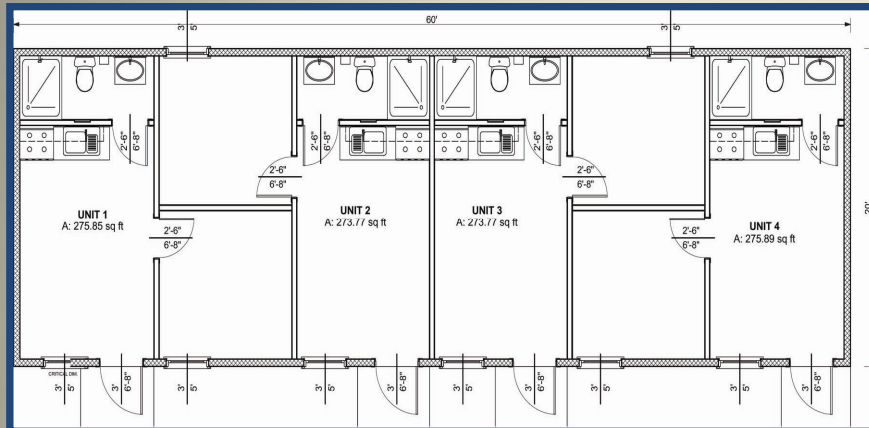
HIGH DENSITY DISASTER RELIEF HOUSING



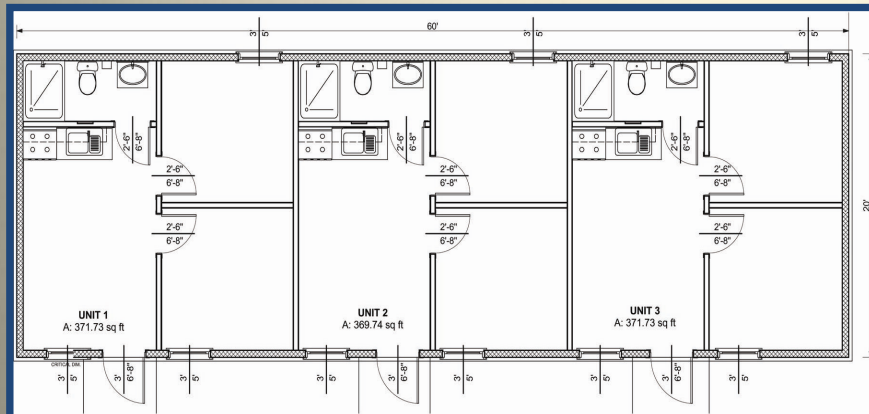
Capacity: 32 people:
Size: 1200 Square Feet
200 Square feet per unit
4 BR/4BA/1Kitchen
Material Cost Per Sq. Ft.: \$25.00
Construction time 6 units: 1 week
Single unit: 1 day



MEDIUM DENSITY RELIEF HOUSING



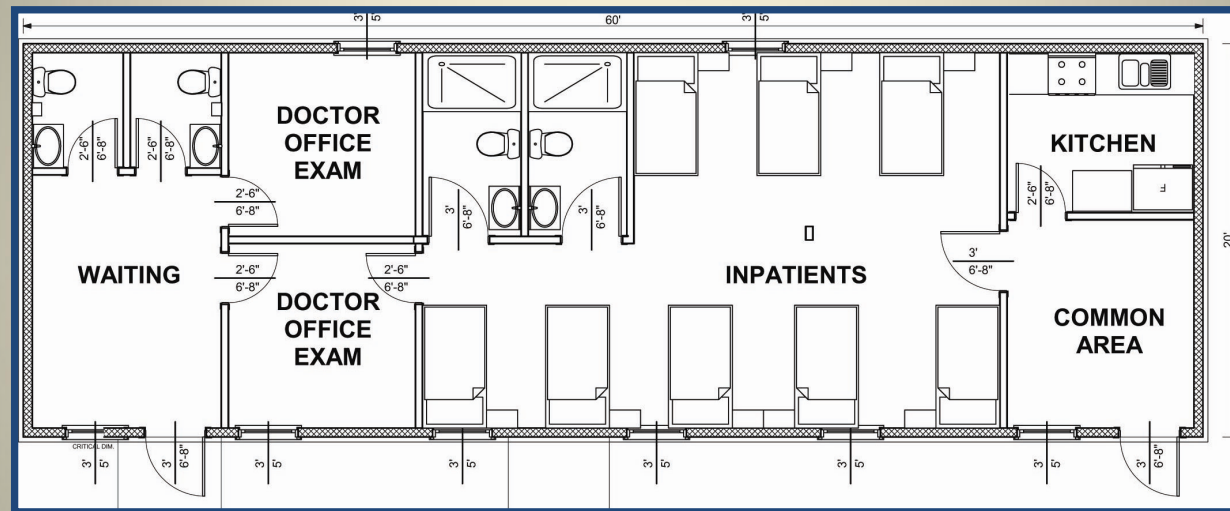
4 Unit Building Total 1200 square feet
Materials cost per square foot: \$25.00
Each Unit 300 square feet -2Br/1Ba
Construction Time: 1 week



3 Unit Building Total 1200 square feet
Materials cost per square foot: \$25.00
Each Unit 400 square feet: 3Br/1Ba
Construction Time: 1 week



SMALL UNIT HOSPITAL/CLINIC

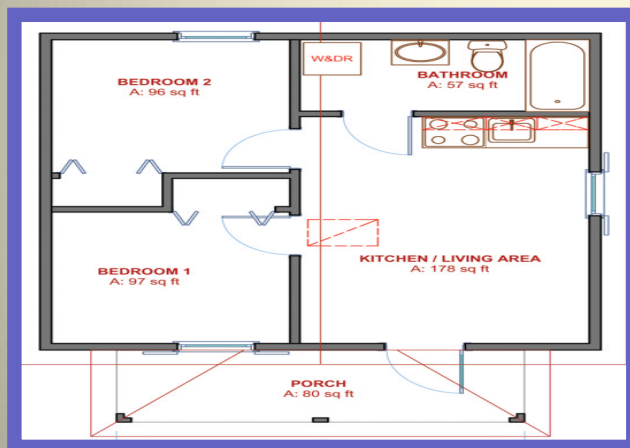


Building Total 1200 square feet
Materials Cost per Square Foot: \$25.00
Construction Time: 1 week

AFFORDABLE SINGLE FAMILY HOMES

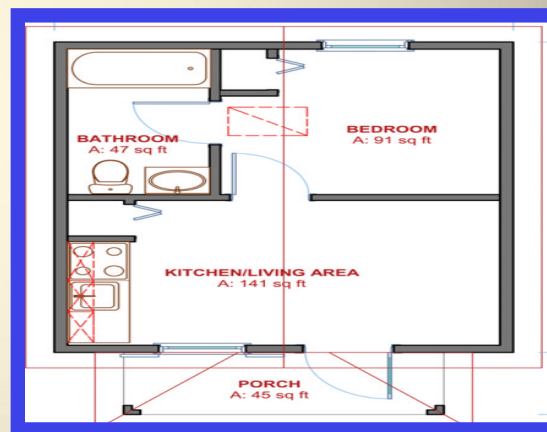


*Per square foot prices shown for all housing includes wiring and plumbing rough in.



Model 500 – 506 Square Feet

Size of this home: 506 Square Feet
 Single Family Home: 2 BR/1 Bath
 Materials Cost to build per square foot: \$53.86*
 Can be built in two story to double the space
 Construction time: 10 days completely finished



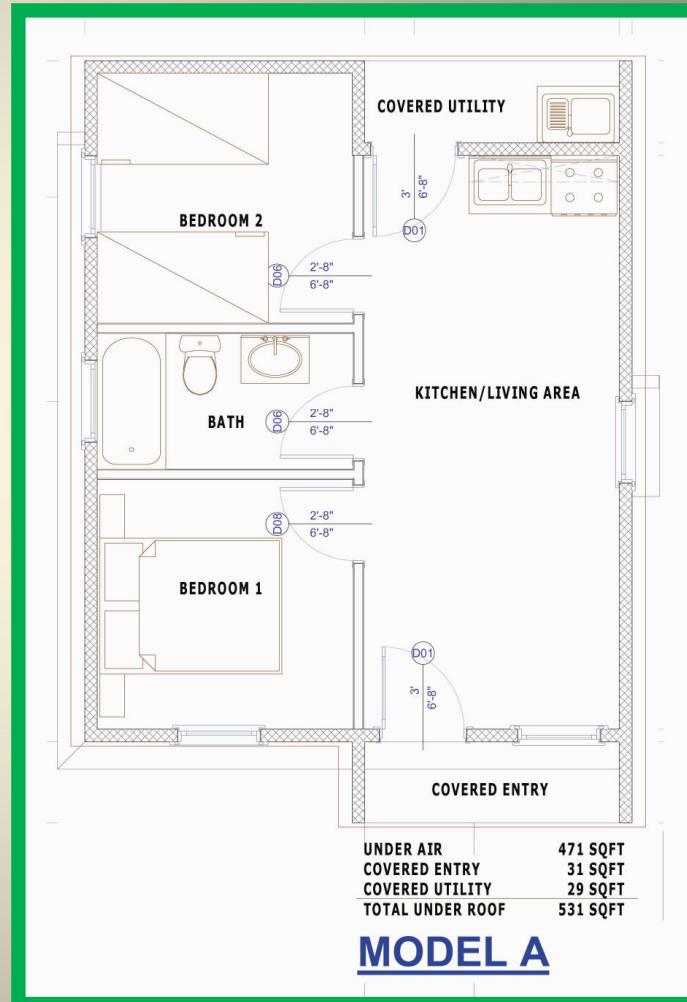
Model 300 – 324 Square Feet

Size of this home: 324 Square Feet
 Single Family Home: 1 BR/1 Bath
 Materials Cost to build per square foot: \$58.33*
 Can be built in two story to double the space
 Construction time: 10 days completely finished

AFFORDABLE SINGLE FAMILY HOMES



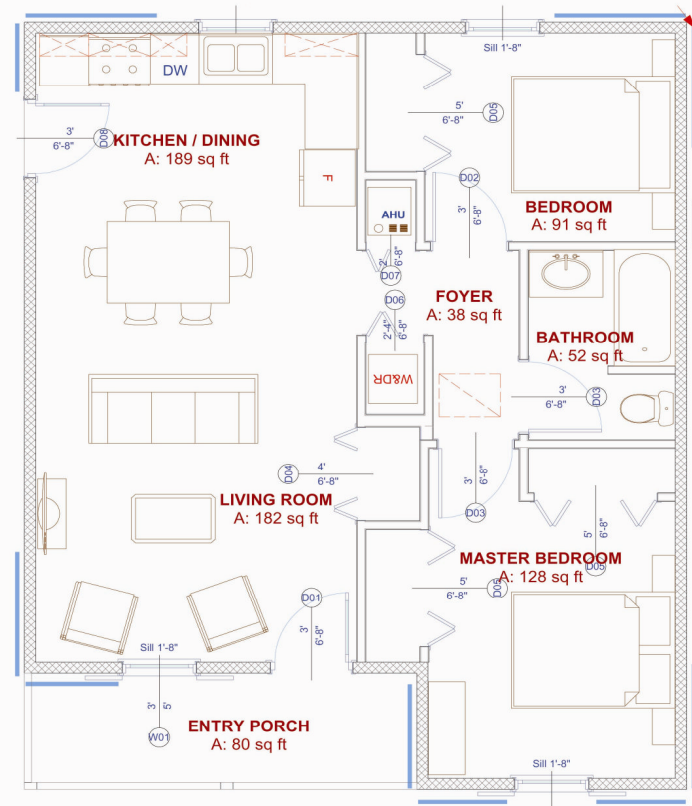
Size of this home: 550 Square Feet
Single Family Home: 2 BR/1 Bath
Materials Cost to build per square foot: \$46.91
Can be built in two story to double the space
Construction time: 2 weeks



AFFORDABLE SINGLE FAMILY HOMES



Size of this home: 811 Square Feet
Single Family Home: 2BR/1 Bath
Materials Cost to build per square foot: \$49.44
Can be built in two story to double the space
Construction time: 30 Days completely finished



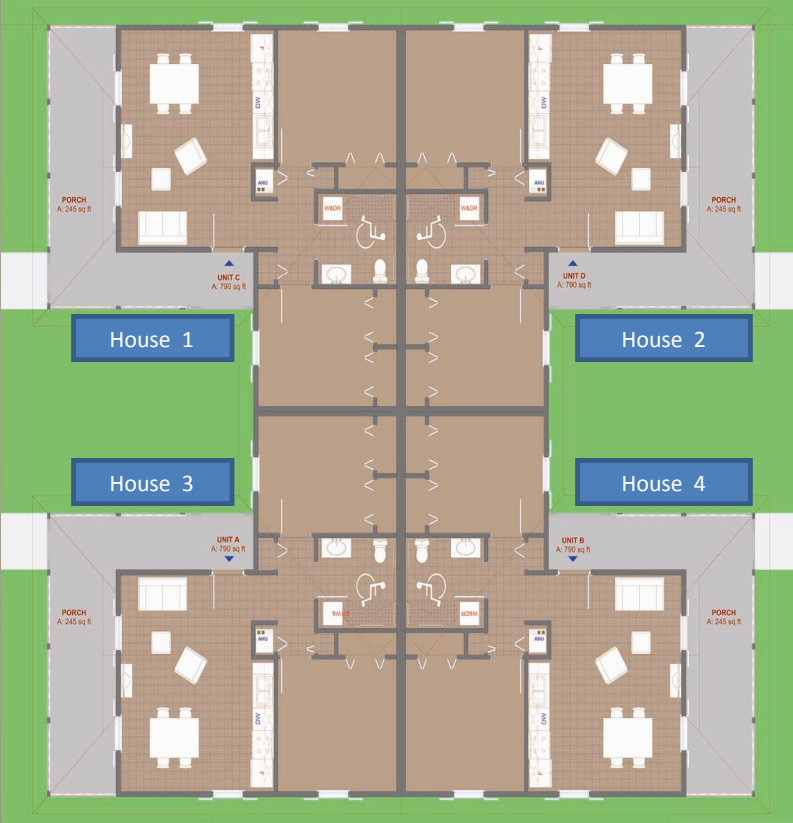
LIVING AREA 811 sq.ft
TOTAL AREA 891 sq.ft

AFFORDABLE SINGLE FAMILY HOMES – 4 PLEX



Size of these homes: 995 Square Feet each
Single Family Home: 2 BR/1 Bath
Materials Cost to build per square foot: \$49.72
Can be built in two story to double the space
Construction time: 12 weeks – 4 houses

AFFORDABLE SINGLE FAMILY HOMES – 4 PLEX

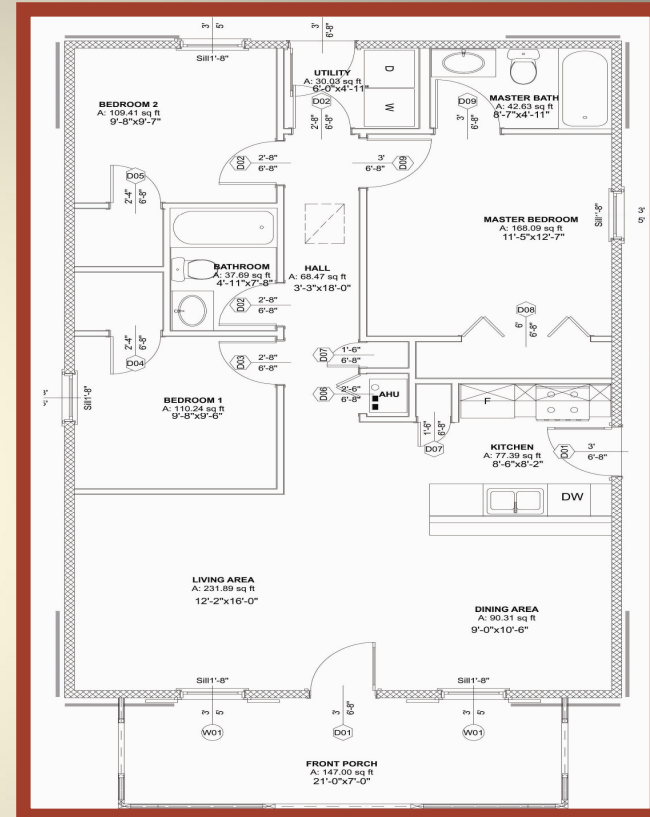


4 PLEX SITE PLAN – 4 HOUSES WITH SAME THE FLOORPLAN



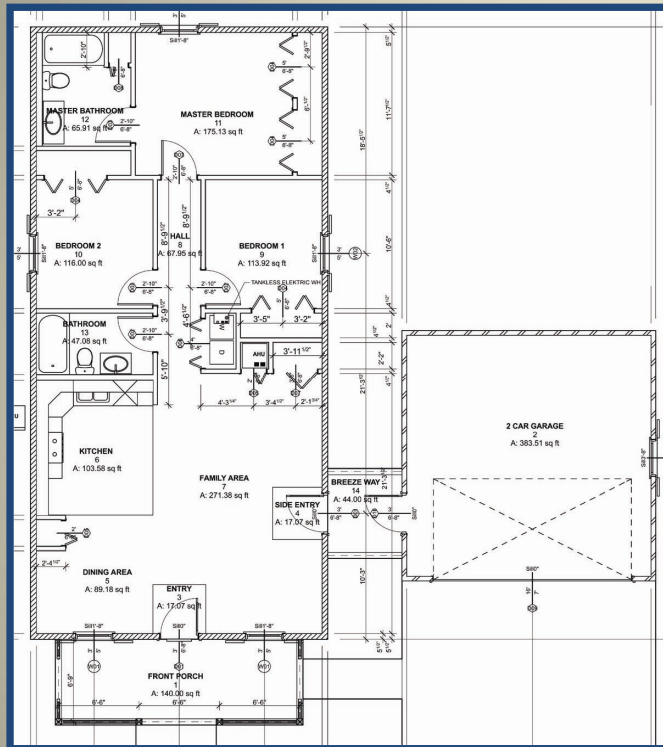
UNIT FLOOR PLAN – HOUSE 2

AFFORDABLE SINGLE FAMILY HOME



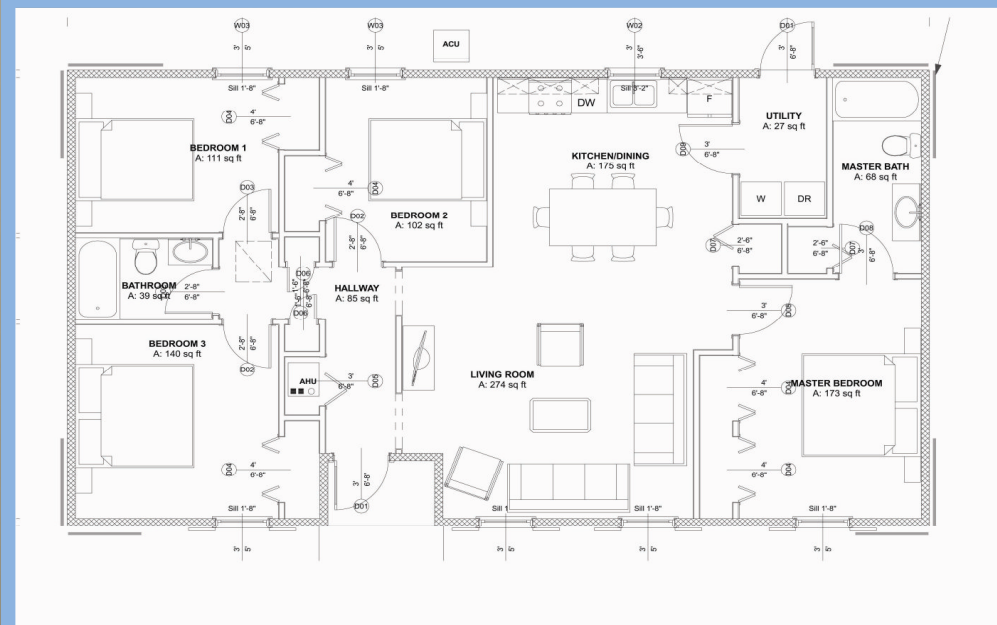
Size of this home: 1,066 Square Feet
Single Family Home: 3BR/1 Bath
Materials Cost to build per square foot: \$49.44
Can be built in two story to double the space
Construction time: 30 Days completely finished

AFFORDABLE SINGLE FAMILY HOME



Size of this home: 1200 Square Feet
Single Family Home: 3 BR/2 Bath/Garage option
Materials Cost to build per square foot: \$49.44
Can be built in two story to double the space
Construction time: 30 Days completely finished

AFFORDABLE SINGLE FAMILY HOME



Size of this home: 1350 Square Feet
Single Family Home: 4 BR/2 Bath
Materials Cost to build per square foot: \$49.44
Can be built in two story to double the space
Construction time: 30 Days completely finished

AFFORDABLE SINGLE FAMILY HOMES

Custom Home Construction



Size of this home: 2400 Square Feet
Single Family Custom Built Home: 3BR/2.5B
Materials Cost to build per square foot: \$53.78
Construction time: 12 weeks completely finished

AFFORDABLE SINGLE FAMILY HOMES

Custom Home Construction



Size of this home: 4,000 Square Feet
Single Family Custom Built Home: 4BR/3B
Materials Cost to build per square foot: \$60.44
Construction time: 12 weeks completely finished

Multi-Family Housing Townhomes - Condominiums



Note the steel frame construction on this multi-family housing complex .
One, two and three bedroom homes.



Size of this facility : 36,000 Square Feet
Provides housing for 12 families
Materials Cost to build per square foot: \$56.39
Construction time: 24 weeks completely finished

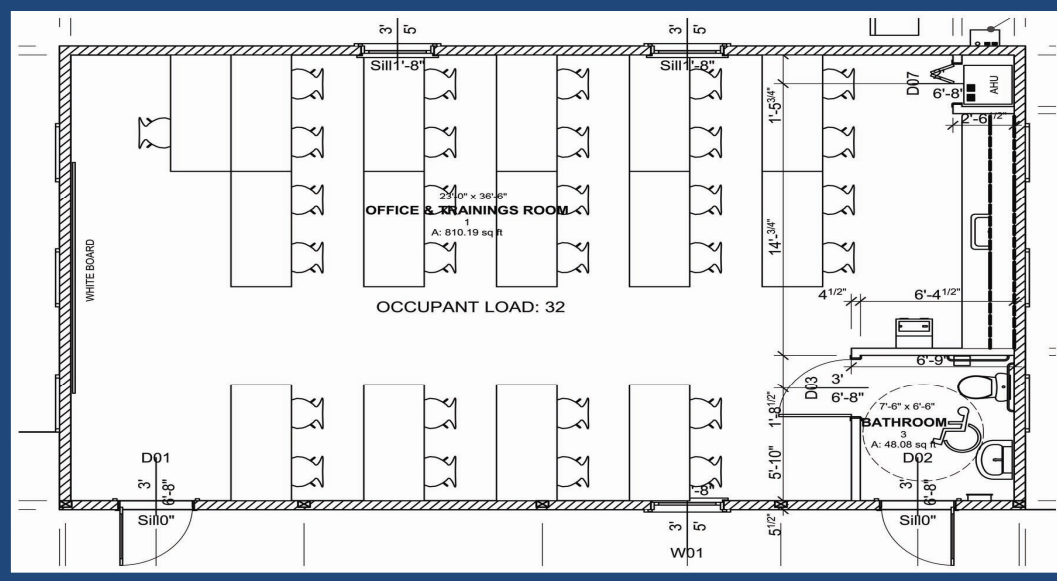
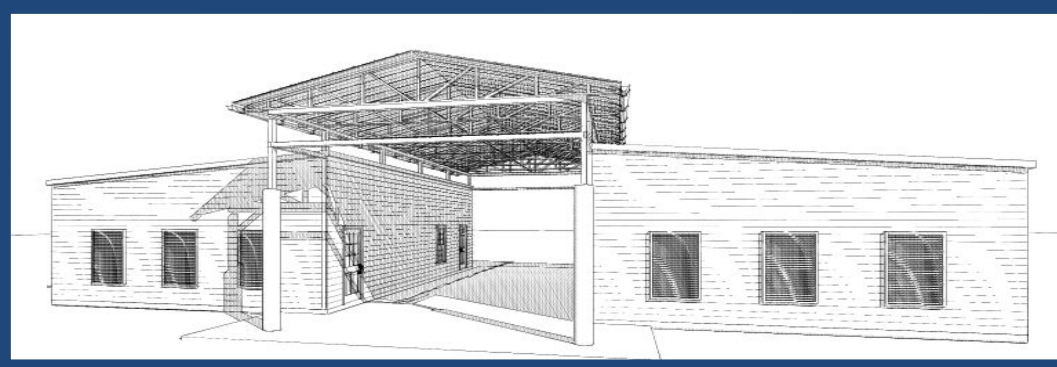
Affordable Apartment Complex



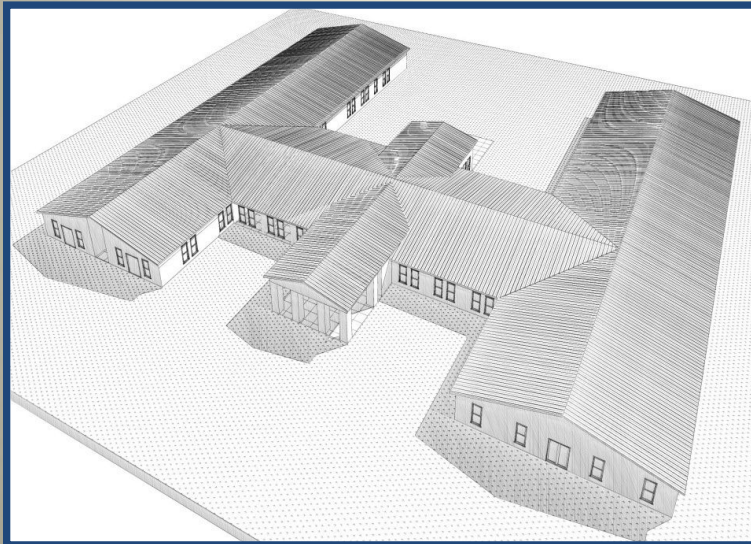
Size of this facility : 137,000 Square Feet
Provides housing for 127 families – 1 and 2 BR apartments
Materials cost to build per square foot: \$51.39
Construction time: 36 weeks completely finished

SCHOOL

Classroom size: 960 Square feet
Accommodates 32 Students
Materials cost per sq. ft: \$49.44
Construction time: 30 days

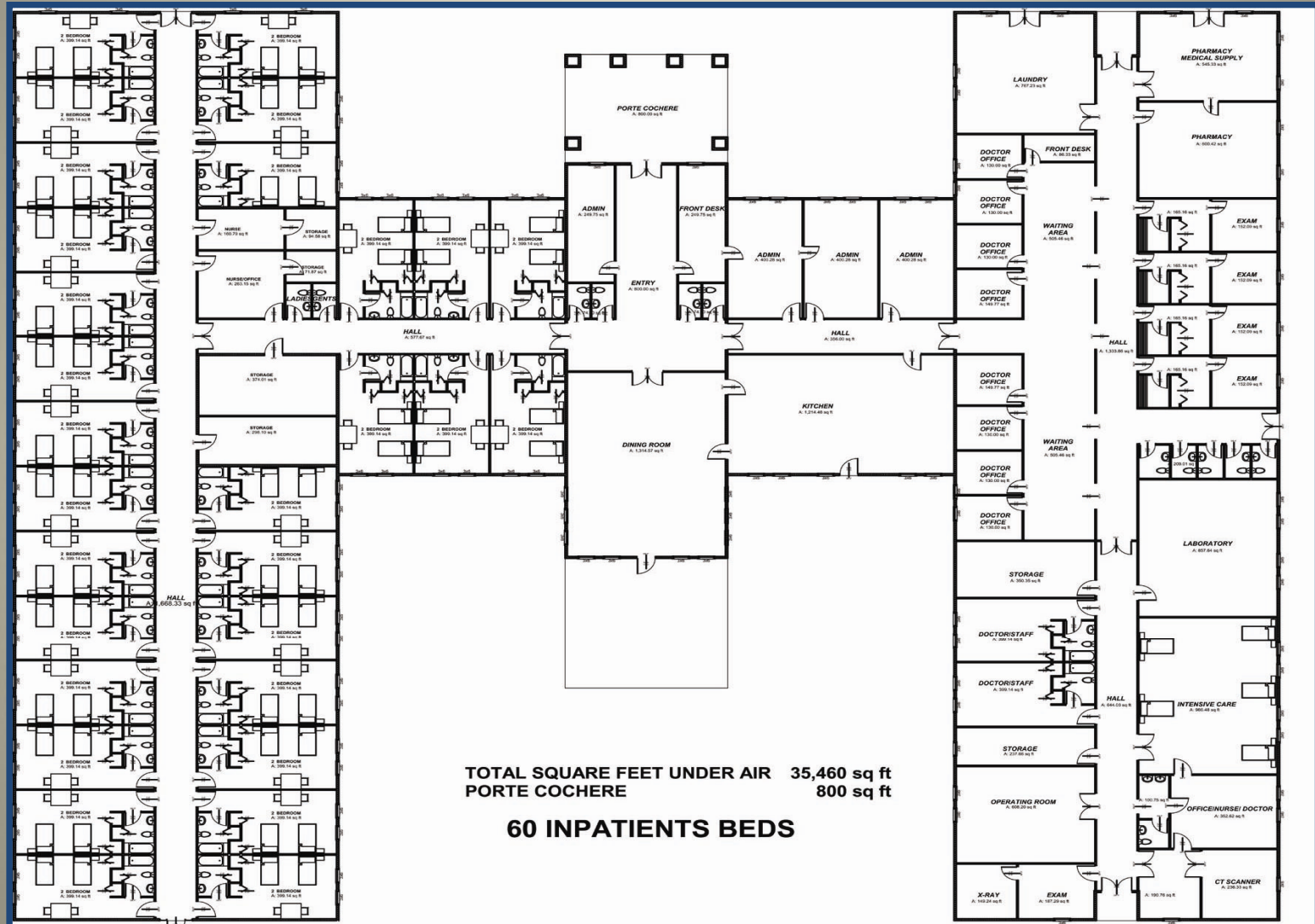


60 INPATIENT HOSPITAL



Size of this hospital: 35,460 Square Feet
60 Bed Full Service Hospital
Materials Cost to build per square foot: \$72.22
Construction time: 36 Weeks

60 INPATIENT HOSPITAL FLOORPLAN



FLOOR PLAN 1/16" = 1'-0"

Commercial Facility - Restaurant

Size of this facility : 14,000 Square Feet
Commercial building

Materials Cost to build per square foot: \$51.39

Construction time: 4 weeks completely finished



Note the steel structures in both
the framing and the trusses.



THE BUILDING PROCESS: FACTORY IN A BOX

Set up Time 15 Minutes



Will provide training for local hire employees.

On-Site and On-Demand Fabrication

- Operate in multiple locations
- Production rates: up to ten houses per day for some models with a 24 hour operation



THE BUILDING PROCESS: FACTORY IN A BOX

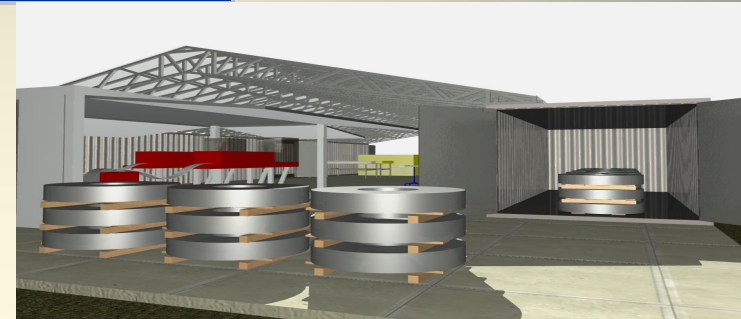
Manufacturing Process



Uses local labor – provides jobs and teaches skills

FOR LARGE SCALE JOBS:

MiniPlant



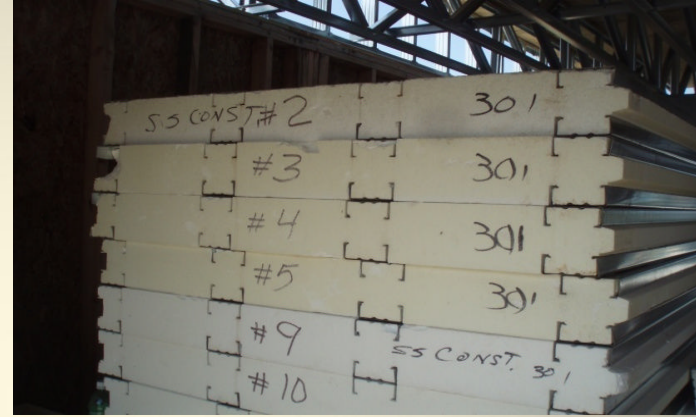
- QUICK TO INSTALL – FULLY SELF CONTAINED
- EFFICIENT TO OPERATE
- HIGH PRODUCTION RATES
- EASY TO RELOCATE
- TRAINS AND EMPLOYS LOCAL LABOR
- ALL WEATHER OPERATIONS

Manufacturing Process



A unique patented process

EPS Wall Panels



- Earthquake resistant
- Fire resistant
- Moisture resistant
- Vermin resistant
- Mold and mildew resistant
- 240 Kilometer per hour wind load
- Very efficient heating and cooling



Entire House on Truck for delivery

Production Site
To
Construction Site

- Quick, Efficient, Cheap
- Very High Quality
- Local labor construction
- Elevations and facades are custom designed to reflect local building styles.

End product will
be a house that
reflects local
building styles.

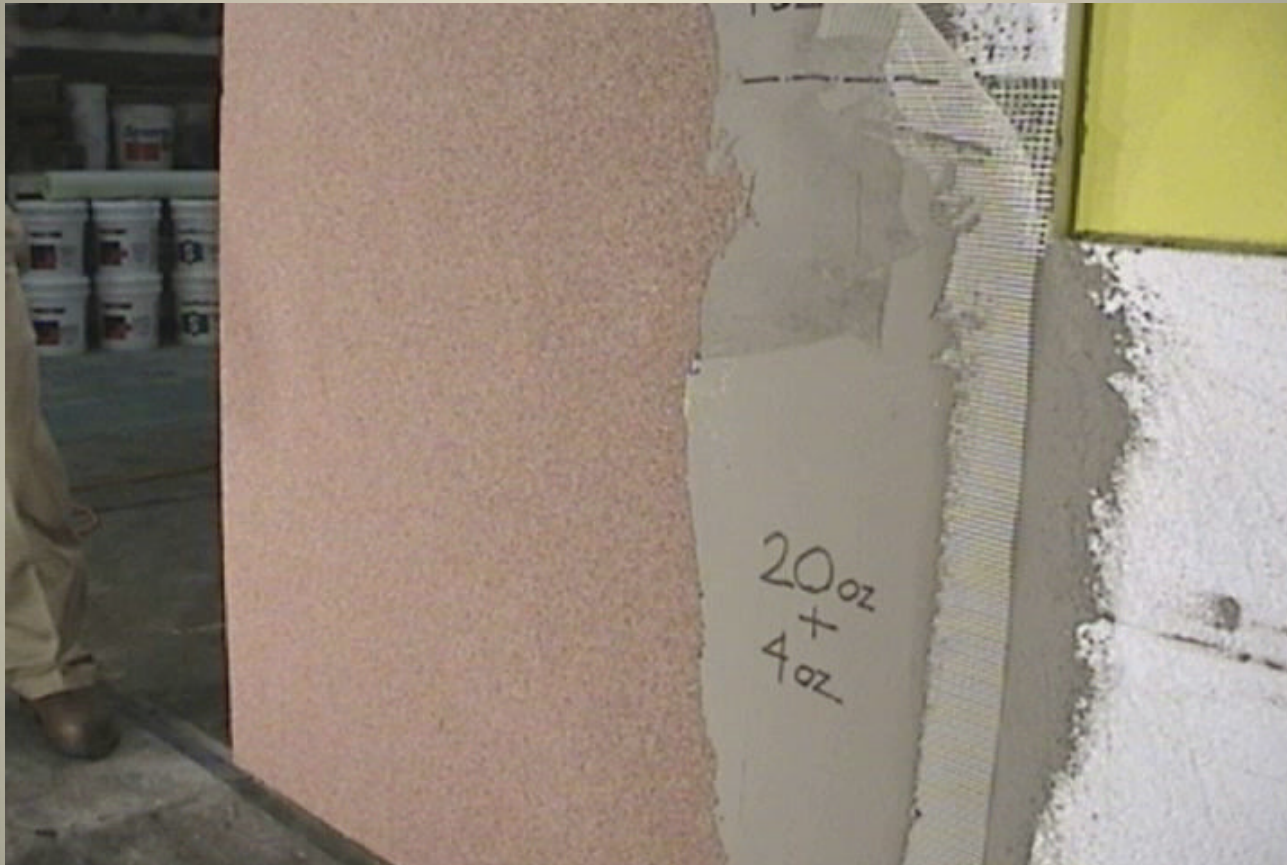


1200 square foot, 3 BR/2B home with garage option.

BUILDING A HIGH QUALITY HOUSE QUICKLY- EFFICIENTLY – LOW COST



A DURABLE PRODUCT – IMPACT TEST



DOUBLE CLICK TO START VIDEO

THE ALTERNATIVE BUSINESS MODELS

- **Contract to build with local Government.**
- **Partnership with a local company.**
- **Partnership with local Government.**
- **Joint Venture with local company.**
- **Joint Venture with local Government.**
- **Bring Factory in a Box to the work site – Produce locally with local labor.**
- **Produce panels locally and sell to a local builder. Local builder completes construction.**
- **Produce panels and kits offshore – ship to location.**

Flexibility in Business Relationships

SUMMARY

- **Very high quality houses and buildings.**
- **Wide variety of products across all price ranges.**
- **Very cost effective.**
- **Quick start up.**
- **Rapid production.**
- **Flexibility in design and production – houses will reflect the local style.**
- **All costs shown are material costs only; they do not include any shipping or labor costs for erection.**
- **Turn key operation or kits.**

CONCLUSION

- **We deliver housing solutions.**
- **We can deliver houses, neighborhoods or communities.**
- **We can deliver multiple products: single family houses, multi-family houses, apartments, commercial facilities, hospitals, clinics and schools.**
- **We can ship panels for home construction 14 days after contract.**
- **We can be in production anywhere 60 days after contract.**
- **We have Housing Solutions for Everyone.**

For more information, contact:

Eco-\$mart, Inc.

(888)329-2705 ph

info@eco-smart.com