

APOLLO II™

PV Roofing System



EACH KIT INCLUDES:

- 60 watt, high-efficiency monocrystalline modules
- Waterproof and fire-resistant underlayment membranes
- Flashing accessories
- Starter strip and wind clips
- Central string inverter
- Home run wiring
- Monitoring system (optional)

FEATURES AND BENEFITS:

- Apollo II functions as both the roof covering and the solar PV collector.
- Efficiency: 14 high-efficiency monocrystalline silicon solar cells per module for a power rating of 60 watts per module.
- Low profile: The slim profile provides a clean integrated look that a rack mounted system cannot match.
- Lightweight: No need for structural reinforcements or analysis. Each module weighs only 12 pounds or about as many pounds per square foot as a typical asphalt shingle. (Less than 3 pounds per square foot.)
- Load rating: Modules are rated to 250 pounds per square foot.
- Wind resistance rating: Apollo II roofing systems achieve a 110 mph wind resistance rating.
- Water handling: Water channels and raised fastener locations further improve the integrity of Apollo II as a roofing system.
- Wire management: Open space under the modules allows for easy wiring/installation and eliminates the possibility of wires being pinched between the module and the roof deck.
- Aesthetics: Black (frame) on black (cells) on black (backsheet) provides a greater aesthetic and visually blends with the surrounding roof.
- Roof Slope: Apollo II arrays may be installed on roofs with a 4:12 pitch up to a 20:12 pitch.

CertainTeed
SAINT-GOBAIN

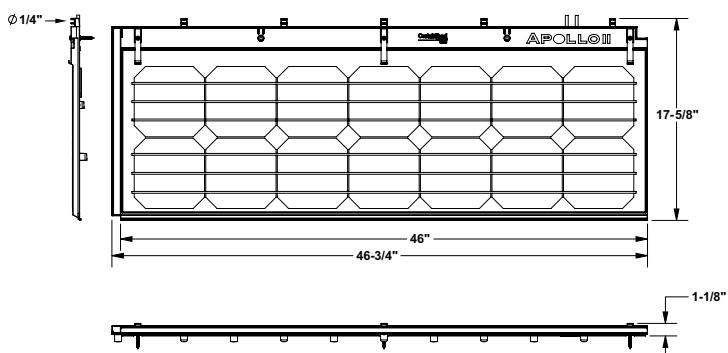
APOLLO II™

PV Roofing System



DIMENSIONS

Exposed Area: 46" x 13-3/4"



Made in USA

ASK ABOUT ALL OF OUR OTHER CERTAINTEED® PRODUCTS AND SYSTEMS:

ROOFING • SIDING • TRIM • DECKING • RAILING • FENCE
GYPSUM • CEILINGS • INSULATION

www.certainteed.com <http://blog.certainteed.com>

ELECTRICAL CHARACTERISTICS

Standard Test Conditions: 25 C, 1kW/m², AM 1.5

Maximum Power (Pmax)	60W
Maximum Power Voltage (Vmp)	7.06 V
Maximum Power Current (Imp)	8.46 A
Open Circuit Voltage (Voc)	9.25 V
Short Circuit Current (Isc)	8.80 A
Maximum System Voltage	600 V
Series Fuse Rating	15 A
Performance Tolerance	± 3%
Conversion Efficiency	14.7%
Power Temp. Coefficient (Ptmp)	-0.45%/°C
Voltage Temp. Coefficient (Vtoc)	-0.30%/°C
Normal Operating Cell Temp. (NOCT)	55.6°C
PTC Rating	50.3W

MECHANICAL CHARACTERISTICS

Outside Dimensions	46-3/4" x 17-5/8" x 1-1/8"
Weight	12 lbs (273 lbs per square)
Cell	Monocrystalline
No. of cells and connections	14 in series
Bypass Diode	1 Per panel
Load Rating	250 lbs/sq ft
Wiring	14 AWG PV wire
Connectors	MC4-EVO 3

WARRANTY AND CERTIFICATIONS

Warranty	25 year limited power warranty 10 year limited product warranty
Certifications	UL 1703 UL 790 Class A fire rating ASTM D3161 Class F IEC 61215 California CEC listed



ABSOLUTE MAXIMUM RATINGS

Parameters	Rating	Unit
Operating Temperature	-40 to +90	°C
Storage Temperature	-40 to +90	°C
Dielectric Voltage Withstood	600 max	V-DC

CertainTeed Corporation
P.O. Box 860
Valley Forge, PA 19482

Professional: 877-596-0471
Consumer: 855-307-2880
Claims: 800-345-1145

© 8/14 CertainTeed Corporation, Printed in U.S.A.
Code No. 20-20-3418

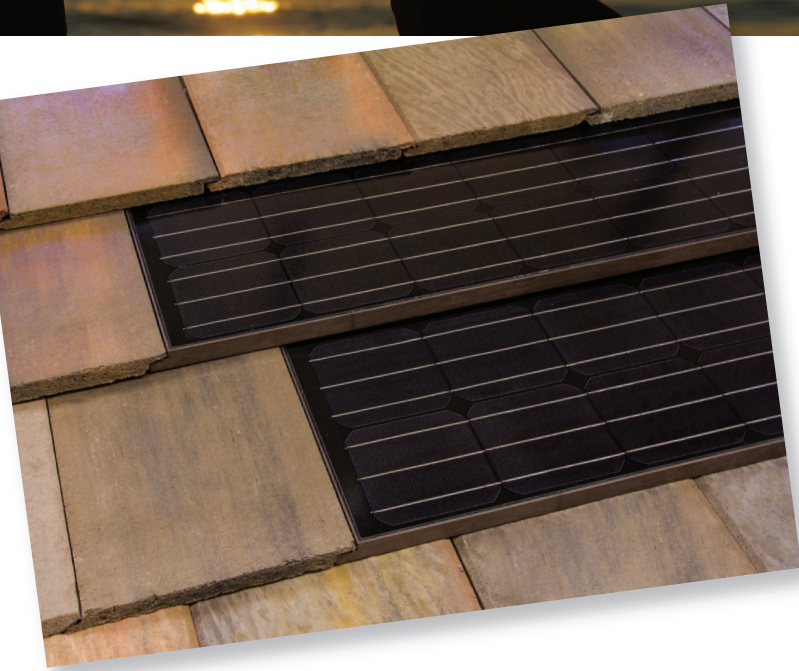


Distributed by: Eco-\$mart, Inc. (888)329-2705 ph / (941)377-9460 fx / info@eco-smart.com

APOLLO

TILE II

PV Roofing System



A high efficiency monocrystalline solar tile designed for integration with many concrete tile roof products.

EACH KIT INCLUDES:

- 60 watt, high-efficiency monocrystalline modules
- Waterproofing membrane
- Fire-resistant underlayment
- Flashing accessory
- Starter strip
- Central string inverter
- Home run wiring
- Monitoring system (optional)

FEATURES AND BENEFITS:

- Efficiency: 14 high-efficiency monocrystalline silicon solar cells per module for a power rating of 60 watts per module.
- Low profile: The slim profile provides a clean integrated look that a rack mounted system cannot match.
- Integrates seamlessly with most flat, concrete tiles.
- Lightweight: No need for structural reinforcements or analysis. Each module weighs only 13 pounds or 307 pounds per 100 square feet.
- Load rating: Modules are rated to 250 pounds per square foot.
- Wind resistance rating: Apollo Tile II roofing systems achieve a 110 mph wind resistance rating.
- Water handling: Water channels and raised fastener locations improve the integrity of Apollo Tile II as a roofing system.
- Aesthetics: Brown (frame); black (cells) on black (backsheet) provides a greater aesthetic and visually blends with most concrete tile colors.



APOLLO

TILE II

PV Roofing System

ELECTRICAL CHARACTERISTICS

Standard Test Conditions: 25 C, 1kW/m², AM 1.5

Maximum Power (Pmax)	60W
Maximum Power Voltage (Vmp)	7.06 V
Maximum Power Current (Imp)	8.46 A
Open Circuit Voltage (Voc)	9.25 V
Short Circuit Current (Isc)	8.80 A
Maximum System Voltage	600 V
Series Fuse Rating	15 A
Performance Tolerance	± 3%
Conversion Efficiency	15.3%
Power Temp. Coefficient (Ptmp)	-0.45%/ °C
Voltage Temp. Coefficient (Vtoc)	-0.30%/ °C
Normal Operating Cell Temp. (NOCT)	53.5 °C
PTC Rating	50.9W

MECHANICAL CHARACTERISTICS

Outside Dimensions	47" x 17-1/4" x 1-1/4"
Weight	13 lbs (307 lbs per square)
Cell	Mono-Crystalline
No. of cells and connections	14 in series
Bypass Diode	1 per panel
Load Rating	250 lbs/sq ft
Wiring	14 AWG PV wire
Connectors	MC4-EVO 3

WARRANTY AND CERTIFICATIONS

Warranty	25 year limited power warranty 10 year limited product warranty
Certifications	Certified to UL 1703 by CSA UL 790 Class A fire rating ASTM D3161 Class F California CEC listed IEC 61215

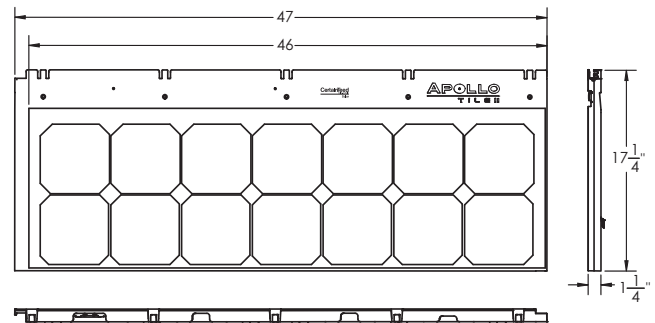


ABSOLUTE MAXIMUM RATINGS

Parameters	Rating	Unit
Operating Temperature	-40 to +90	°C
Storage Temperature	-40 to +90	°C
Dielectric Voltage Withstood	600 max	V-DC

DIMENSIONS

Exposed Area: 46" x 13.25"



Made in USA

ASK ABOUT ALL OF OUR OTHER CERTAINTEED® PRODUCTS AND SYSTEMS:

ROOFING • SIDING • TRIM • DECKING • RAILING • FENCE
GYPSUM • CEILINGS • INSULATION

www.certainteed.com <http://blog.certainteed.com>

CertainTeed Corporation
P.O. Box 860
Valley Forge, PA 19482
Professional: 877-596-0471
Consumer: 855-307-2880
Claims: 800-345-1145

© 8/14 CertainTeed Corporation, Printed in U.S.A.
Code No. 20-20-3348

