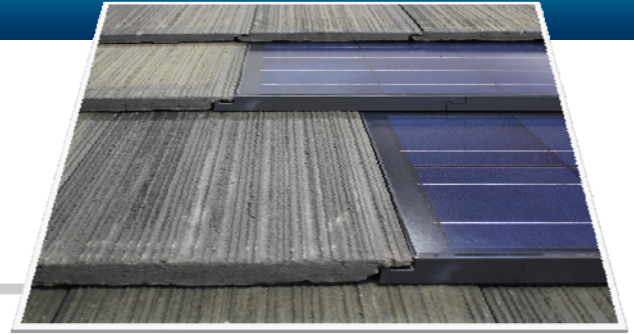


SUN ENERGY Tile™ [Model BIPV0XX-TXX]

A high efficiency polycrystalline solar tile designed for integration with many concrete tile roof products.



Electrical Characteristics

Standard Test Conditions 25° C, 1kW/m² AM 1.5

	BIPV052-T86 BIPV052-T16* [standard cell]	BIPV050-T11** [brown cell]
Maximum Power (Pmax)	52W	50W
Maximum Power Voltage (Vmp)	6.79V	6.67V
Maximum Power Current (Imp)	7.65A	7.46A
Open Circuit Voltage (Voc)	8.70V	8.66V
Short Circuit Current (Isc)	8.07A	7.95A
Maximum System Voltage	DC 600	DC 600
Series Fuse Rating	15 A	15 A
Performance Tolerance	± 3%	± 3%
Conversion Efficiency	13.2%	12.7%
Power Temp. Coefficient (Ptmp)	-0.54% / °C	-0.54% / °C
Voltage Temp Coefficient (Vtcc)	-0.37% / °C	-0.37% / °C
Normal Operating Cell Temp (NOCT)	56.9° C	56.1° C

*Model Numbers BIPV052-T86 and BIPV052-T16 utilize standard dark blue cells and are offered with either a gray or brown frame.

**Model Number BIPV05-T11 utilizes brown cells and is offered with a brown frame.

Warranty Certifications & Listings

25 year limited power warranty

10 year limited product warranty

Certifications & Listings

Certified to UL 1703 by CSA

Class "A" Fire Rating

California CEC Listed



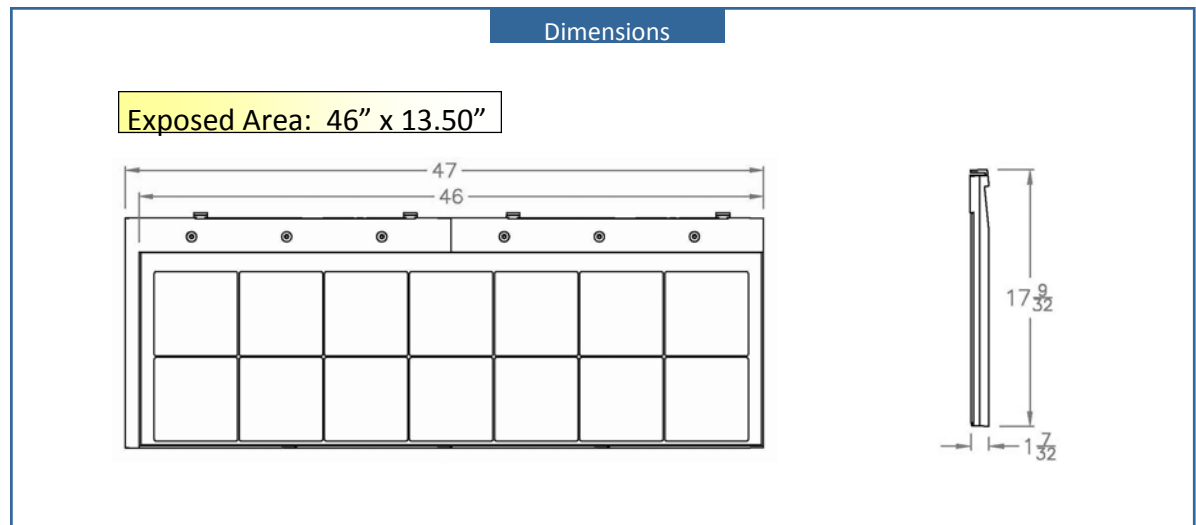
252316

Mechanical Characteristics

Outside Dimensions	47" x 17 1/4" x 1 7/32"
Weight	13 lbs (325 lbs per sq)
Cell	Polycrystalline
No. of cells and connections	14 in series
Bypass Diode	1 per panel
Load Rating	250 lbs/ft ²
Application	On/Off Grid System
Connectors	MC3

Absolute Maximum Ratings

Parameters	Rating	Unit
Operating Temperature	-40 to +85	C
Storage Temperature	-40 to +90	C
Dielectric Voltage Withstand	2000 max	V-DC
Short Circuit Current (Isc)	8.07	AMPS



Specifications in this data sheet are subject to change without notice. 06/01/2011

Distributed by: Eco-\$mart, Inc. (888)329-2705 ph / (941)377-9460 fx / info@eco-smart.com