



Eco-Smart, Inc.
 4411 Bee Ridge Rd. #344
 Sarasota, FL 34233
 (888) 329-2705 ph / (941) 377-9460 fx
www.eco-smart.com

Solahart Wholesale Prices - July. 1, 2011

L Series Open Loop Thermosiphon Systems

The L Series of systems are direct, thermosiphon systems that are designed for use in temperate climates. L systems are not to be installed in any areas that experience freezing conditions.

System No.	Description	Price
SHS096025 Includes:	181L SYSTEM COMPLETE (1) SH10104505 - 180L TANK 2.4KW (1) SH13103010 - L COLLECTOR (1) SH12104224 - PARTS KIT 181L	\$2,239
SHS092042 Includes:	302L SYSTEM COMPLETE (1) SH10101005 - 300L TANK 2.4KW (2) SH13103010 - L COLLECTOR (1) SH12104264 - 302L PARTS KIT	\$2,967
SHS095018 Includes:	303L SYSTEM COMPLETE (1) SH10101005 - 300L TANK 2.4KW (3) SH13103010 - L COLLECTOR (1) SH12104264 - 302L PARTS KIT (1) SH12104273 - PARTS KIT 3RD PANEL	\$3,604
SHS094614 Includes:	443L SYSTEM COMPLETE (1) SH10116009 - 443L TANK 4.8KW (3) SH13103010 - L COLLECTOR (1) SH21204278 - PARTS KIT 443L	\$5,059

J SERIES CLOSED LOOP THERMOSIPHON SYSTEMS

The J Series Systems are closed loop thermosiphon systems that can be installed in climates that experience moderate freezing conditions

Note: "No Potable" = T/P and tempering valves not included in Parts Kit

System No.	Description	Price
SHS096834 Includes:	181J SYSTEM COMPLETE (1) SH10105009 - 180J TANK 2.4KW (1) SH13103050 - J COLLECTOR (1) SH12104226 - 181J/K PARTS KIT (1) SH12104766 - HARTGARD	\$2,408
SHS094522 Includes:	302J SYSTEM COMPLETE (1) SH10103005 - 300J TANK 2.4KW (2) SH13103050 - J COLLECTOR (1) SH12104465 - 302J/K PARTS KIT (1) SH12104766 - HARTGARD	\$3,041
SHS095319 Includes:	303J SYSTEM COMPLETE (1) SH10103005 - 300J TANK 2.4KW (3) SH13103050 - J COLLECTOR (1) SH12104465 - 302J/K PARTS KIT (1) SH12104766 - HARTGARD (1) SH12104412 - PARTS KIT 3RD PANEL EXTENSION	\$3,605
SHS094613 Includes:	443J SYSTEM COMPLETE (1) SH10116507 - 443J TANK 4.8KW (3) SH13103050 - J COLLECTOR (1) SH12104279 - 443J PARTS KIT (1) SH12104766 - HARTGARD	\$4,929
SHS096832 Includes:	181J SYSTEM NO POTABLE (1) SH10105009 - 180J TANK 2.4KW (1) SH12104232 - PARTS KIT 181J NO POTABLE (1) SH12104766 - HARTGARD (1) SH13103050 - J COLLECTOR	\$1,884

SHS094520	302J SYSTEM NO POTABLE (1) SH10103005 - 300J TANK 2.4KW (1) SH12104467 - PARTS KIT 302J NO POTABLE (1) SH12104766 - HARTGARD (2) SH13103050 - J COLLECTOR	\$2,465
SHS095315	303J SYSTEM NO POTABLE (1) SH10103005 - 300J TANK 2.4KW (1) SH12104467 - PARTS KIT 302J NO POTABLE (1) SH12104412 - PARTS KIT 3RD PANEL EXTENSION (1) SH12104766 - HARTGARD (3) SH13103050 - J COLLECTOR	\$3,083
SHS094626	443J SYSTEM NO POTABLE (1) SH10116507 - 443J TANK 4.8KW (1) SH12104468 - PARTS KIT 443J NO POTABLE (1) SH12104766 - HARTGARD (3) SH13103050 - J COLLECTOR	\$4,481

J FREEHEAT SERIES CLOSED LOOP THERMOSIPHON SYSTEMS

The J Freeheat Series Systems are closed loop thermosiphon systems that can be installed in climates that experience moderate freezing conditions

Note: "No Potable" = T/P and tempering valves not included in Parts Kit

System No.	Description	Price
SHS096848	181J FREEHEAT SYSTEM COMPLETE (1) SH10105626 - 180F TANK 2.4KW (1) SH13103050 - J COLLECTOR (1) SH12104226 - 181J/K PARTS KIT (1) SH12104766 - HARTGARD	\$2,440
SHS092236	302J FREEHEAT SYSTEM COMPLETE (1) SH10109026 - 300F TANK 2.4KW (2) SH13103050 - J COLLECTOR (1) SH12104465 - 302J/K PARTS KIT (1) SH12104766 - HARTGARD	\$3,049
SHS095142	303J FREEHEAT SYSTEM COMPLETE (1) SH10109026 - 300F TANK 2.4KW (3) SH13103050 - J COLLECTOR (1) SH12104465 - 302J/K PARTS KIT (1) SH12104766 - HARTGARD (1) SH12104412 - PARTS KIT 3RD PANEL EXTENSION	\$3,613
SHS094758	443J FREEHEAT SYSTEM COMPLETE (1) SH10118050 - 440F TANK 4.8KW (3) SH13103050 - J COLLECTOR (1) SH12104279 - 443J PARTS KIT (1) SH12104766 - HARTGARD	\$5,307
SHS096958	181J FREEHEAT SYSTEM NO POTABLE (1) SH10105626 - 180F TANK 2.4KW (1) SH12104232 - PARTS KIT 181J NO POTABLE (1) SH12104766 - HARTGARD (1) SH13103050 - J COLLECTOR	\$1,917

SHS092188 Includes:	302J FREEHEAT SYSTEM NO POTABLE (1) SH10109026 - 300F TANK 2.4KW (1) SH12104467 - PARTS KIT 302J NO POTABLE (1) SH12104766 - HARTGARD (2) SH13103050 - J COLLECTOR	\$2,528
SHS095158 Includes:	303J FREEHEAT SYSTEM NO POTABLE (1) SH10109026 - 300F TANK 2.4KW (1) SH12104467 - PARTS KIT 302J NO POTABLE (1) SH12104412 - PARTS KIT 3RD PANEL EXTENSION (1) SH12104766 - HARTGARD (3) SH13103050 - J COLLECTOR	\$3,091
SHS094768 Includes:	443J FREEHEAT SYSTEM NO POTABLE (1) SH10118050 - 440F TANK 4.8KW (3) SH13103050 - J COLLECTOR (1) SH12104468 - 443J PARTS KIT NO POTABLE (1) SH12104766 - HARTGARD	\$4,860

KF FREE HEAT CLOSED LOOP THERMOSIPHON SYSTEMS

The KF Freeheat Series Systems are closed loop thermosiphon systems that can be installed in climates that experience moderate freezing and regular overcast conditions

Note: "OTP" = Hartstat Overtemperature Protection Kit Included; "No Potable" = T/P and tempering valves not included

Note: Purchase of "OTP" (Hartstat) Systems require a one purchase of SH12104603 Commissioning Kit

System No.	Description	Price
SHS096913 Includes:	181KF FREE HEAT SYSTEM, OTP (1) SH10105626 - 180F TANK 2.4KW (1) SH13103060 - KF COLLECTOR (1) SH12104750 - PARTS KIT 181 HARTSTAT (1) SH12104766 - HARTGARD	\$2,843
SHS092147 Includes:	302KF FREE HEAT SYSTEM, OTP (1) SH1019026 - 300F TANK 2.4KW (2) SH13103060 - KF COLLECTOR (1) SH12104751 - PARTS KIT 302 HARTSTAT (1) SH12104766 - HARTGARD	\$3,619
SHS092175 Includes:	303KF FREE HEAT SYSTEM, OTP (1) SH10109026 - 300F TANK 2.4KW (3) SH13103060 - KF COLLECTORS (1) SH12104752 - PARTS KIT 303 HARTSTAT (1) SH12104766 - HARTGARD	\$4,303
SHS094712 Includes:	443KF FREE HEAT SYSTEM, OTP (1) SH10118050 - 440F TANK 4.8KW (3) SH13103060 - KF COLLECTORS (1) SH12104753 - PARTS KIT 443 HARTSTAT (1) SH12104766 - HARTGARD	\$6,105

PITCHED AND DIRECT MOUNTING RACK KITS

Number	Description	Price
ES-302-17Rack-140mph Includes:	140 mph Wind Rated 17 Degree Stand for 302 For Flat Roof or Ground Mount	\$1,366.67
ES-DMT-181-150mph Includes:	150 mph Wind Rated Direct Mount Standoff Set - 181 For Direct Mount To Sloped Roofs	\$255.71
ES-DMT-302-150mph Includes:	150 mph Wind Rated Direct Mount Standoff Set - 302 For Direct Mount To Sloped Roofs	\$365.00

SHS094100 Includes:	A FRAME MOUNTING RACK 17.5 DEGREE - 300L (2) SH12106101 - A FRAME 17.5 DEGREE (1) SH12106880 - A FRAME KIT 300	\$632
SHS094102 Includes:	A FRAME MOUNTING RACK 17.5 DEGREE - 180L (2) SH12106101 - A FRAME 17.5 DEGREE (1) SH12106881 - A FRAME KIT 180	\$596
SHS094106 Includes:	A FRAME MOUNTING RACK 17.5 DEGREE 303/443 SYSTEMS (3) SH12106101 - A FRAME 17.5 DEGREE (1) SH12106882 - A FRAME KIT 303/443	\$847
SHS097888 Includes:	A FRAME MOUNT RACK 21 DEGREE - 300L (HAWAII) (2) SH12106106 - A FRAME KIT 21 DEGREE (1) SH12106880 - A FRAME KIT 300	\$641

Major System Components, Accessories and Service Parts

Part No	Description	Price
THERMOSIPHON TANKS		
10105626	180F TANK 2.4KW USA	\$1,131
10105009	180J TANK 2.4KW USA	\$1,098
10104505	180L TANK 2.4KW USA	\$994
10106009	220L TANK 2.4KW USA	\$1,052
10109026	300F TANK 2.4KW USA	\$1,251
10103005	300J TANK 2.4KW USA	\$1,243
10101005	300L TANK 2.4KW USA	\$1,156
10118050	440F TANK 4.8KW USA	\$3,074
10116507	440J TANK 4.8KW USA	\$2,696
10116009	440L TANK 4.8KW USA	\$2,600

COLLECTORS		
13103010	COLLECTOR L	\$529
13103012	COLLECTOR LC (Cone type)	\$544
13103050	COLLECTOR J	\$435
13103060	COLLECTOR KF	\$527
13103105	COLLECTOR Bt	\$761

PARTS (INSTALLATION) KITS		
12104224	PARTS KIT 181L USA	\$715
12104226	PARTS KIT 181J/K USA	\$814
12104232	PARTS KIT 181J/K NO POTABLE USA	\$291
12104264	PARTS KIT 302L USA	\$752
12104273	PARTS KIT 3RD PANEL 300L	\$109
12104278	PARTS KIT 443L USA	\$870
12104279	PARTS KIT 443J/K USA	\$867
12104400	PARTS KIT - NO HEAT DISSIPATOR	\$19
12104402	HEAT DISSIPATION KIT 300/440 MKIII	N/A
12104412	PARTS KIT 3RD PANEL EXT 303 (CONETITE)	\$128
12104465	PARTS KIT 302J/K USA	\$867
12104467	PARTS KIT 302 J/K NO POTABLE USA	\$345
12104468	PARTS KIT 443 J/K NO POTABLE USA	\$420
12104766	HARTGARD	\$61

HARTSTAT SYSTEM PARTS KITS		
12104731	181 HARTSTAT UPGRADE KIT	\$473
12104734	302 HARTSTAT UPGRADE KIT	\$545
12104735	303 HARTSTAT UPGRADE KIT	\$650
12104736	443 HARTSTAT UPGRADE KIT	\$643
12104737	444 HARTSTAT UPGRADE KIT	\$754
12104750	181 HARTSTAT SYSTEM PARTS KIT USA	\$1,123
12104751	302 HARTSTAT SYSTEM PARTS KIT USA	\$1,252
12104752	303 HARTSTAT SYSTEM PARTS KIT USA	\$1,410
12104753	443 HARTSTAT SYSTEM PARTS KIT USA	\$1,390
12104755	181 HARTSTAT SYSTEM PARTS KIT USA NO POTABLE	\$603
12104756	302 HARTSTAT SYSTEM PARTS KIT USA NO POTABLE	\$731
12104757	303 HARTSTAT SYSTEM PARTS KIT USA NO POTABLE	\$886
12104758	443 HARTSTAT SYSTEM PARTS KIT USA NOT POTABLE	\$866

OTHER ACCESSORIES		
10160300	AFD 2 PANEL NO NOK VALVE	\$230
10160600	AFD 3 PANEL NO NOK VALVE	\$141
10160700	STONE GUARD	\$234
12104601	CLOSED CIRCUIT TEST KIT (O RING)	\$280
12104602	COMMISSIONING KIT	\$269
12104603	COMMISSIONING KIT - HIGH PRESSURE (HARTSTAT SYSTEMS)	\$602
12106101	A FRAME 17.5 DEG RH GALVANIZED	\$178
12106106	A FRAME 21 DEG RH	\$183
12106108	A FRAME 303/443 17.5 DEG. RH GALVANIZED	\$182
12106880	A FRAME KIT 300	\$275
12106881	A FRAME KIT 180	\$240
12106882	A FRAME KIT 303/443	\$312
12106883	A FRAME ASSY VARIABLE 2 PANEL	\$342
12106884	A FRAME ASSY VARIABLE 1 PANEL	\$318
12106887	ANTI CYCLONE KIT - 181 SYSTEMS (SINGLE PANEL) - NEW!	\$361
12106888	ANTI CYCLONE KIT - 302 SYSTEMS (TWO PANEL) - NEW!	\$595

COLORED TANK SKINS		
338952	TANK SKIN 300 HEADLAND (Tuscan Red)	\$90
338953	TANK SKIN 300 SHALE GREY	\$90
338955	TANK SKIN 300 NIGHT SKY	\$90
338956	TANK SKIN 300 WINDSPRAY	\$90
338965	TANK SKIN 300 PALE EUCALYPTUS	\$90
338971	TANK SKIN 300 HOMESTEAD RED	\$90
338978	TANK SKIN 300 JASPER	\$90
338982	TANK SKIN 300 BLUE RIDGE	\$90
902044	TANK SKIN 300 WOODLAND GREY	\$90
343152	TANK SKIN 440 HEADLAND	\$111
343153	TANK SKIN 440 SHALE GRAY	\$111
343155	TANK SKIN 440 NIGHT SKY	\$111
343156	TANK SKIN 440 WINDSPRAY	\$111
343165	TANK SKIN 440 PALE EUCALYPTUS	\$111
343168	TANK SKIN 440 SURFMIST	\$111
343171	TANK SKIN 440 PAPERBARK	\$111
343178	TANK SKIN 440 JASPER	\$111
343182	TANK SKIN 440 BLUE RIDGE	\$111
343184	TANK SKIN 440 WOODLAND GREY	\$111

CUTAWAY DISPLAYS		
10105001	180J TANK CUTAWAY DISPLAY	\$1,779
10103002	300J TANK CUTAWAY DISPLAY	\$1,901
13103000	COLLECTOR L/J CUTAWAY DISPLAY PANELS	\$930
13103002	COLLECTOR KF CORNER DISPLAY	\$390
13103003	COLLECTOR CORNER Bt DISPLAY	\$454



Eco-Smart, Inc.
 4411 Bee Ridge Rd. #344
 Sarasota, FL 34233
 (888) 329-2705 ph / (941) 377-9460 fx
www.eco-smart.com

July 2011 Solahart Service Parts - Wholesale Price List

Part No.	Description	Price
190034	BLANK ELEMENT PLATE	\$ 5.84
190845	TANK STRAP - LJ SYSTEMS (WAS 330845)	\$ 12.28
191832	CYCLONE COLLECTOR CLAMP	\$ 4.40
191842	COLLECTOR CLAMP	\$ 7.33
191844	DRIVE CLEATS	\$ 10.24
197092	TEST BLOCK ASSEMBLY	\$ 83.96
330070	TAIL FITTING 3/4" BRASS	\$ 9.60
330075	ADAPTOR TAIL FITTING LKF	\$ 13.55
330118	VENT HOLE PLUG	\$ 0.16
330119	MOLDED HEXAGON NAME PLATE	\$ 3.16
330120	MOLDED FITTING END COVER	\$ 26.15
330122	MOLDED TAIL END COVER	\$ 24.90
330124	FOAM FILL PLUG	\$ 0.32
330139	STRATIFIER	\$ 2.52
330149	BOLT INSULATION FERRULE (18mm DIAMETER)	\$ 0.16
330150	GASKET FILL PLUG 8mm DIA. J SERIES 1982-1994	\$ 0.64
330163	ELEMENT BLANKING SEAL	\$ 3.64
330164	O RING 43mm DIAMETER (LG. NUT ANODE, OUTER, PRE 1982)	\$ 1.56
330166	O RING 35mm DIAMETER (SMALL NUT ANODE, OUTER, POST 1982)	\$ 0.96
330167	O RING 33.8mm DIAMETER (LG. NUT ANODE, INNER, PRE 1982)	\$ 1.40
330168	O RING 22mm DIAMETER (SMALL NUT ANODE, OUTER, POST 1982)	\$ 0.96
330169	O RING 95mm DIAMETER (ELEMENT FLANGE, ALL TANKS)	\$ 5.20
330171	O RING 25mm DIAMETER (L COLLECTORS)	\$ 0.80
330176	O RING 15mm PR6 JACKET RELIEF VALVE	\$ 0.16
330179	SEAL WEDGE - O RING TYPE - J SERIES 1982-1984	\$ 2.04
330181	O RING 18mm DIAMETER - J SERIES 1982-1994	\$ 1.72
330329	ELEMENT CAP	\$ 54.34
330273	300L/J TANK SKIN FOLDED	\$ 54.97
330350	SCREW SET 5/16" X 3/4" STAINLESS STEEL	\$ 0.48
330354	WASHER 5/8" ID STAINLESS STEEL	\$ 0.16
330358	SCREW SET 1" X 3/4"	\$ 0.16
330508	COLLECTOR UNIONS - O RING TYPE - 1982-1994	\$ 29.94
330519	COLLECTOR GLASS	\$ 111.83
330534	TAPE # 60403 30.5M X 12mm	\$ 32.78
330535	TAPE # 60402 61M X 18mm	\$ 67.89
330577	PIPE COLLECTOR HOT 302 J & K 1982-1994	\$ 53.25

330578	PIPE COLLECTOR COLD 302 J & K 1982-1994	\$ 94.20
Part No.	Description	Price
330585	SNAP RING - O RING TYPE - J SERIES 1982-1994	\$ 0.80
330586	FILL AND PLUG ASSEMBLY - O RING TYPE - 1982-1994	\$ 41.90
330587	COLLECTOR PLUG - O RING TYPE - 1982-1994	\$ 19.55
330596	ADAPTOR TANK WARRANTY	\$ 15.75
330600	COLLECTOR NUT MALE L	\$ 3.64
330601	COLLECTOR NUT J, PLATED	\$ 4.24
330602	ADAPTOR COLLECTOR BRASS A41812	\$ 18.59
330606	BLANKING DISC L COLLECTORS	\$ 1.28
330607	3/4" BSP PLUG	\$ 7.08
330639	TEE PIECE USA 3/4"	\$ 48.05
330663	COLLECTOR HOT PIPE 181L SERIES	\$ 39.86
330676	TEMPERING VALVE 3/4" TVA75HF	\$ 185.92
330680	NOK VALVE	\$ 238.65
330681	NOK VALVE ADAPTOR	\$ 22.07
330686	PR6 VALVE 80KPA	\$ 56.54
330695	UNION L	\$ 13.39
330706	COLLECTOR HOT PIPE L	\$ 36.70
330806	5/16" NUT STAINLESS STEEL	\$ 0.16
330842	A FRAME BRACE ANGLE 302 GALVANIZED	\$ 18.56
330845	TANK STRAP (USE 190845)	\$ -
330847	COLLECTOR STRAP LJ	\$ 12.28
330872	TANK CLAMP	\$ 9.28
330938	PIPE COLLECTOR COLD 181L (USA ONLY)	\$ 104.72
330939	PIPE COLLECTOR COLD 302L (USA ONLY)	\$ 104.75
331693	ADAPTOR 3/4" BSP X 1 1/8 UNEF USA	\$ 23.63
331844	DRIVE CLEATS (USE 191844)	
331846	COLLECTOR RAIL 300 LITRE	\$ 29.30
331847	COLLECTOR RAIL 180 LITRE	\$ 22.07
331851	COLLECTOR RAIL EXTENSION	\$ 22.07
331852	COLLECTOR RAIL USA 300 LITRE 1890mm	\$ 34.66
331941	TANK/COLLECTOR RAIL 303 FRAME MOUNT	\$ 65.69
331942	COLLECTOR RAIL HEAVY 303/443	\$ 64.73
331943	A FRAME BASE PLATE 303/443	\$ 43.24
334036	VALVE BC12 HT55 TWIST TOP	\$ 112.63
334098	MALE - FEMALE ADAPTOR 1/2" TO 3/4"	\$ 5.68
334138	STAINLESS STEEL CLAMP	\$ 10.08
334265	VALVE HT748 1000KPA 3/4" TWIST TOP	\$ 75.13
334274	MALE UNION 3/4" BSP X 1 1/8 UNEF	\$ 15.75
334275	OLIVE 7/8" BRASS	\$ 6.31
334276	NUT 1 1/8" UNEF	\$ 10.24
335001	ELEMENT KIT 2.4KW	\$ 90.88
337004	ANODE 440 LITRE SMALL NUT (USE 344264)	\$ -
337026	HOT PIPE 443L USA	\$ 41.26
337029	COLD PIPE ASSEMBLY 443L	\$ 105.55

337033	COLD PIPE ASSEMBLY 443J (CONE TYPE)	\$ 94.20
Part No.	Description	Price
337035	HOT PIPE ASSEMBLY 443J (CONE TYPE)	\$ 60.33
337044	TAPTITE 5/16" X 3/4"	\$ 0.22
337055	PRESSURE GAUGE	\$ 138.30
337056	THUMBSCREW	\$ 7.24
337078	ELEMENT SEAL	\$ 1.28
337082	COLLECTOR TEST BLOCK ADAPTOR ASSY CONE TYPE	\$ 25.99
337093	COLD PIPE EXTENSION 182J AND 303J	\$ 47.26
337096	FILL FITTING/PLUG ASSEMBLY CONE TYPE	\$ 17.79
337099	PLASTIC BOX FOR COMMISSIONING KIT	\$ 12.18
337116	GLAND NUT 3/4" TEFLON COATED	\$ 4.56
337117	FILL FITTING CONETITE ONLY	\$ 5.99
337119	COLD PIPE ASSY 302J, 303J, 221J AND 222J	\$ 60.49
337121	COLLECTOR CONNECTOR ASSEMBLY	\$ 18.27
337123	HOT PIPE ASSY 302J, 303J, 221J CONE TYPE	\$ 27.42
337130	FILL PLUG 3/4" TEFLON COATED	\$ 2.04
337132	COLLECTOR BUNG TEFLON COATED	\$ 7.24
337134	FILL FITTING CONE COLLECTOR	\$ 22.51
337135	FILL FITTING CONE COLLECTOR BUNG ASSEMBLY	\$ 12.76
337138	3/4" TEFLON COATED CONE	\$ 1.88
337144	TANK COLLECTOR SPACER	\$ 4.40
337147	COLD PIPE ASSY 181J CONE TYPE	\$ 61.29
337148	HOT PIPE ASSY 181J AND 182J CONE TYPE	\$ 29.62
337158	HOT PIPE ASSY 303J CONE TYPE	\$ 69.00
337170	HOT PIPE CONVERSION - CONE TO WE	\$ 42.67
337171	CONVERSION J COLLECTOR CONNECT	\$ 41.74
337184	PIPE HOT ASSY REMOTE INSTALL ALL	\$ 29.46
337248	PIPE HOT ASSY STRAIGHT REMOTE	\$ 29.46
337274	TEST BLOCK ASSEMBLY (USE 197092)	\$ 28.03
337280	BUSH REDUCING 3/4" X 1/2" (EHW)	\$ 5.84
337424	PIPE EXTENSION ASSEMBLY 221J AND 222J	\$ 35.14
337425	HOT PIPE ASSEMBLY 222J	\$ 32.05
337429	HOT PIPE ASSEMBLY 222L	\$ -
337430	PIPE EXTENSION ASSEMBLY 222L	\$ 88.27
337433	HOT PIPE ASSEMBLY 221J	\$ 65.37
337434	COLD PIPE ASSEMBLY 221J	\$ 172.96
337445	PIPE 222L EXTENSION	\$ 45.70
337479	ANODE 300 BCXII 33mm (USE 344273)	\$ -
341031	ANODE 300 BCXII (ALUMINUM) 27mm (USE 344293)	\$ -
344098	F TANK TAIL BLANKING PLUG	\$ 13.07
344136	TANK COLLECTOR RAIL 300 LITRE BCXII 1890mm	\$ 76.40
344261	ANODE ASSY 21 MAGNESIUM 180 L AND J	\$ 32.78
344262	ANODE ASSY 21 MAGNESIUM 220 L AND J	\$ 36.70
344263	ANODE ASSY 21 MAGNESIUM 300 L AND J	\$ 45.54
344264	ANODE ASSY 21 MAGNESIUM 440 L AND J	\$ 61.89

344266	ANODE ASSY 21 MAGNESIUM 300 PRE 1982 LARGE NUT	\$ 57.81
Part No.	Description	Price
344271	ANODE ASSY 33 MAGNESIUM 180 F AND K	\$ 63.01
344272	ANODE ASSY 33 MAGNESIUM 220 F AND K	\$ 72.64
344273	ANODE ASSY 33 MAGNESIUM 300 F AND K	\$ 102.39
344274	ANODE ASSY 33 MAGNESIUM 440 F AND K	\$ 133.10
344281	ANODE ASSY 17 ALUMINUM 180 L AND J	\$ 81.44
344282	ANODE ASSY 17 ALUMINUM 220 L AND J	\$ 86.64
344283	ANODE ASSY 17 ALUMINUM 300 L AND J	\$ 100.19
344284	ANODE ASSY 17 ALUMINUM 440 L AND J	\$ 123.66
344291	ANODE ASSY 27 ALUMINUM 180 F AND K	\$ 234.57
344292	ANODE ASSY 27 ALUMINUM 220 F AND K	\$ 272.03
344293	ANODE ASSY 27 ALUMINUM 300 F AND K	\$ 264.80
344294	ANODE ASSY 27 ALUMINUM 440 F AND K	\$ 476.82
346010	T-STAT EWT1L2S-203 (USA TANKS JAN. 2003 AND LATER)	\$ 54.66
346016	COPPER ELEMENT 1.8KW 240V - NOT FOR USE IN BCXII	\$ 33.86
346017	COPPER ELEMENT 2.4KW 240V - NOT FOR USE IN BCXII	\$ 35.46
346018	COPPER ELEMENT 4.8KW 240V - NOT FOR USE IN BCXII	\$ 42.54
346019	INCOLOY ELEMENT 2.4KW 240V - BCXII ONLY	\$ 48.05
346020	INCOLOY ELEMENT 4.8KW 240V - BCXII ONLY	\$ 63.81
347048	FREEHEAT TANK LOGO/DECAL	\$ 25.35
348035	ADAPTOR VALVE DRAIN KUTERLITE 1 1/8" UNEF	\$ 18.11
391837	HEAVY DUTY COLLECTOR RAIL 3.3M	\$ 69.00
451109	HT585 T/P VALVE - 1000KPA	\$ 52.61
454000	THERMOSTAT STREAMLINE EWT 2L2-60	\$ 42.12
900352	TEMPERATURE PROBE ASSEMBLY L COLLECTOR	\$ 80.48
904018	ADAPTOR 1 1/8" UNEF TO 19mm PIPE	\$ 15.59
904300	UNION BLEED STREAMLINE SYSTEMS	\$ 31.47
904302	AIR VENT 502730	\$ 22.07
904311	INLET PIPE ASSEMBLY	\$ 12.91
904322	CONNECTOR M/BT COLLECTOR OUTLET W/AIR BLEED	\$ 37.02
907052	TEMPERATURE SENSOR	\$ 13.49
940350	TEMPERATURE PROBE ASSEMBLY - POWERPAK	\$ 108.58
12104059	PARTS KIT - O RING JACKETED SYSTEM	\$ 49.62
12104209	THERMOSTAT AND ADAPTOR KIT - FOR USE ON TANKS AFTER JAN. 03	\$ 78.92

SERVICE PARTS UNIQUE TO HARTSTAT SYSTEMS		
343037	RESEVOIR TANK STAINLESS STEEL CLAMP ASSY	\$ 24.39
344153	EXTENSION PIPE ASSY FOR 182, 303 AND 444 JKF HARTSTAT SYSTEMS	\$ 54.81
344167	RESEVOIR TANK PIPE (COLD PIPE)	\$ 12.34
344168	RESEVOIR TANK PIPE (EXTENSION PIPE)	\$ 12.34
344185	2 COLLECTOR SYSTEM RESEVOIR TANK ASSY	\$ 233.26
344186	3 COLLECTOR SYSTEM RESEVOIR TANK ASSY	\$ 343.88
344188	1 COLLECTOR SYSTEM RESEVOIR TANK ASSY	\$ 139.54
344190	TANK TO HARTSTAT VALVE ASSY	\$ 17.47
344191	PR200 JACKET RELIEF VALVE	\$ 66.80

Prices, Terms and Conditions
Subject to Change without
Notice

344204	181JKF HARTSTAT SYSTEM COLD PIPE ASSY	\$	64.25
SERVICE PARTS UNIQUE TO HARTSTAT SYSTEMS			
344209	302JKF HARTSTAT SYSTEM COLD PIPE ASSY	\$	63.81
344211	443JKF HARTSTAT SYSTEM COLD PIPE ASSY	\$	64.13
344226	181JKF HARTSTAT SYSTEM HOT PIPE ASSY	\$	31.35
344231	302JKF HARTSTAT SYSTEM HOT PIPE ASSY	\$	29.30
344232	303JKF HARTSTAT SYSTEM HOT PIPE ASSY	\$	64.73
344233	443JKF HARTSTAT SYSTEM HOT PIPE ASSY	\$	60.97
344252	HARSTAT VALVE	\$	108.99

Thermosiphon J and J Free Heat Closed Circuit Systems

These systems are suitable for multiple installations. They are suitable for frost and harsh water regions.

J and J Free Heat Systems																	
Model	150	151	180	181	182	220	221	222	300	301	302	303	440	441	442	443	444
Tank model																	
J	✓	✓	✓	✓	✓	✓	✓	✓	✓	✓	✓	✓	✓	✓	✓	✓	✓
J Free Heat	✓	✓	✓	✓	✓	✓	✓	✓	✓	✓	✓	✓	✓	✓	✓	✓	✓
Collector model	150F	180F	220F	220F	300F	300F	440F	440F	440F	440F	440F	440F	440F	440F	440F	440F	440F
No. of collectors	1	1	1	1	1	1	1	1	1	1	1	1	1	1	1	1	1
Storage capacity	US-gal	150	180	180	180	220	220	220	300	300	300	300	440	440	440	440	440
Deliver capacity	US-gal	40	48	48	48	58	58	58	80	80	80	80	116	116	116	116	116
Deliver capacity (total)	US-gal	130	130	150	160	160	200	200	240	240	240	240	400	400	400	400	400
Booster capacity (electric or gas)	US-gal	34	34	42	42	42	53	53	63	63	63	63	106	106	106	106	106
Weight empty	kg	56	102	66	108	154	78	124	170	90	145	187	229	148	280	320	320
Weight full	kg	123	225	146	228	340	172	273	375	218	320	412	505	326	629	705	705
A - Width	m	1.40	1.40	1.62	1.62	2.42	1.88	2.04	2.42	2.42	2.42	2.42	3.28	3.41	3.40	4.44	4.44
B - Length	m	55.1	65.1	63.8	63.8	95.3	74.0	80.3	95.3	95.7	95.7	133.1	134.3	137.4	174.8	174.8	174.8
	in	20.1	25.6	25.1	25.1	37.5	29.1	31.3	37.5	37.5	37.5	37.5	53.0	53.0	53.0	69.0	69.0

*The J and J free heat systems can be installed in a solar panel with an in-line solar panel booster heater. Refer to the Solar panel booster heater for further details on the gas booster.

Electric Boost Specifications

Heating unit type *	Copper shaft immersion element
Supply voltage	220 V - 250 V
Rating	Recovery rate @ 240 V and temperature rise of:
1.8 kW	40°C
2.4 kW	50°C
3.0 kW	60°C
3.6 kW	70°C
4.0 kW	80°C

Gas Boost (In Tank - Optional) Specifications

Model type *	FD-15 gas booster (in tank)
Recovery rate - Input / Output	13 MJ/h / 110 MJ/h (2.8kW)
Recovery rate	58 litres per hour @ 40°C rise
Primary voltage	220 V - 250 V
Secondary voltage	12 V DC

*Notified for hot or common water areas

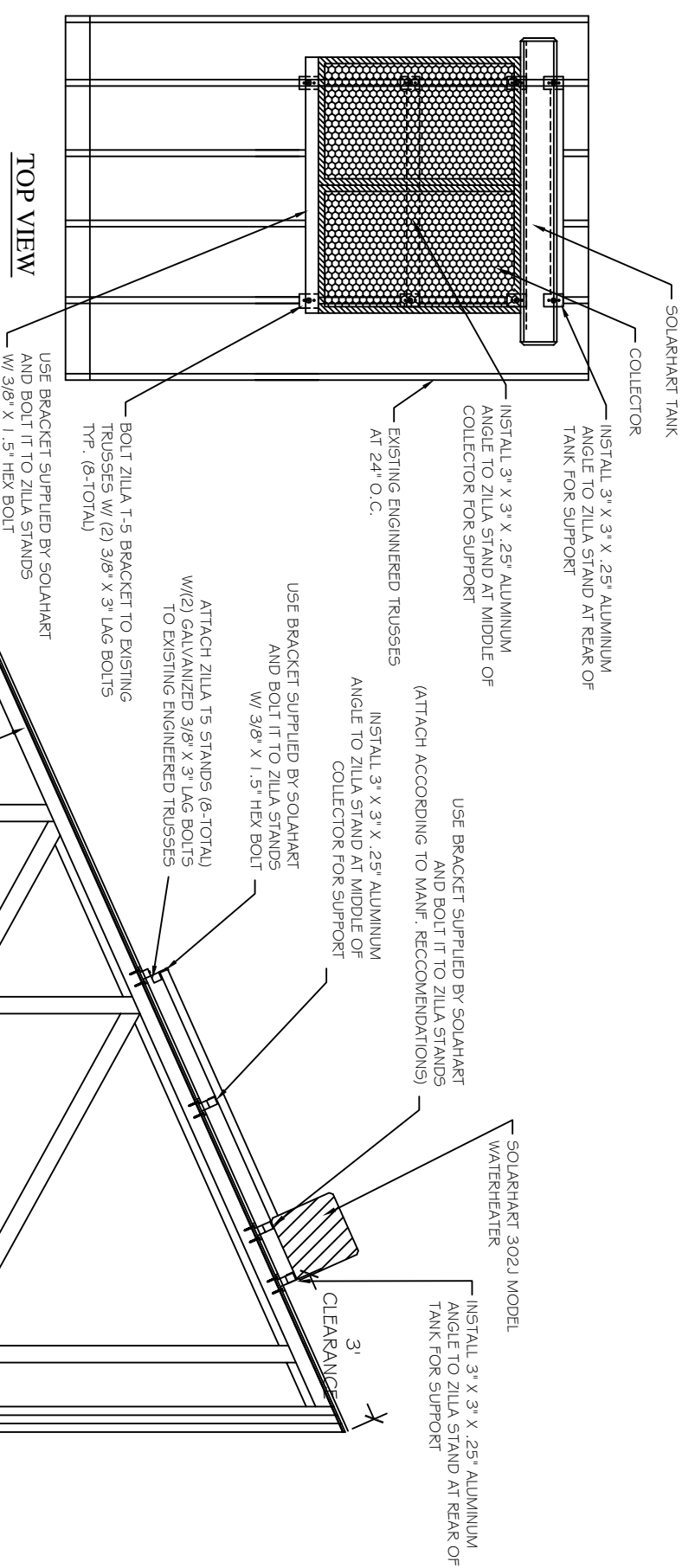
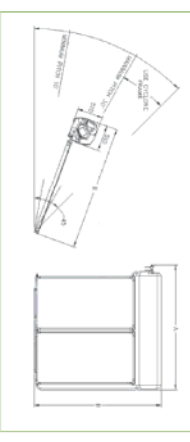
Water Supply

TFR valve setting	kPa	1000	psi	145
EVV setting	kPa	690	psi	100
Max. supply pressure with EVV	kPa	690	psi	100
without EVV	kPa	890	psi	128
Water Connections	code	RP 3/1/20		115
	code	RP 1/1/15		69

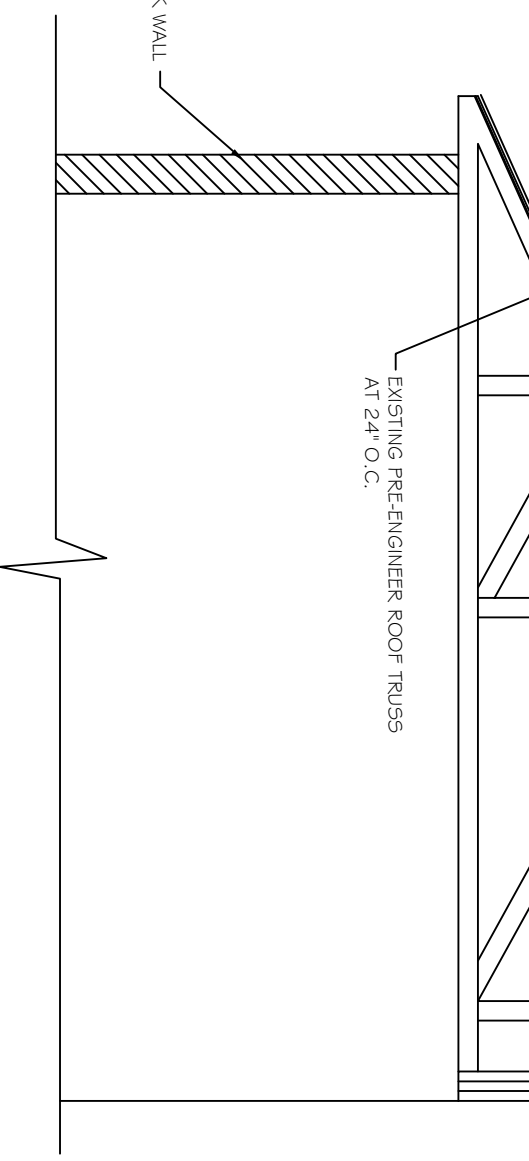
*System Detail View

J Collector												
Aperture (heating area)	length	width	height	capacity empty	capacity full	working pressure	absorber surface	absorber material	riser material	number of risers	try material	insulation material
m ²	1.87	1937	77	3.0	0.9	1.01	101	12	12	35	0.6 mm aluminum	55 mm polyester blanket
mm	1937	1022	77	3.0	0.9	101	101	12	12	35	0.6 mm aluminum	55 mm polyester blanket
in	76.3	40.3	3.0	0.9	0.9	101	101	12	12	35	0.6 mm aluminum	55 mm polyester blanket
mm	1937	1022	77	3.0	0.9	101	101	12	12	35	0.6 mm aluminum	55 mm polyester blanket
in	76.3	40.3	3.0	0.9	0.9	101	101	12	12	35	0.6 mm aluminum	55 mm polyester blanket
mm	1937	1022	77	3.0	0.9	101	101	12	12	35	0.6 mm aluminum	55 mm polyester blanket
in	76.3	40.3	3.0	0.9	0.9	101	101	12	12	35	0.6 mm aluminum	55 mm polyester blanket
mm	1937	1022	77	3.0	0.9	101	101	12	12	35	0.6 mm aluminum	55 mm polyester blanket
in	76.3	40.3	3.0	0.9	0.9	101	101	12	12	35	0.6 mm aluminum	55 mm polyester blanket
mm	1937	1022	77	3.0	0.9	101	101	12	12	35	0.6 mm aluminum	55 mm polyester blanket
in	76.3	40.3	3.0	0.9	0.9	101	101	12	12	35	0.6 mm aluminum	55 mm polyester blanket
mm	1937	1022	77	3.0	0.9	101	101	12	12	35	0.6 mm aluminum	55 mm polyester blanket
in	76.3	40.3	3.0	0.9	0.9	101	101	12	12	35	0.6 mm aluminum	55 mm polyester blanket

J and J Free Heat

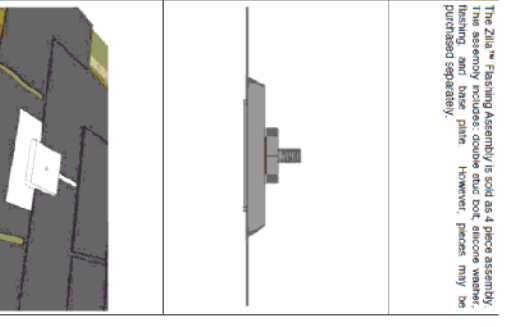


SIDE VIEW



THIS STRUCTURE HAS BEEN DESIGN TO MEET THE WIND LOAD REQUIREMENTS OF SECTION R301.2.1.1 OF THE FLORIDA BUILDING CODE 2007 EDITION - RESIDENTIAL AND ASCE 7-05, WITH 2009 REVISIONS

1. BASIC WIND SPEED - 150MPH (@ 3 SEC. GUST)
2. WIND IMPORTAN FACTOR 1.0
3. WIND EXPOSURE - CATEGORY B

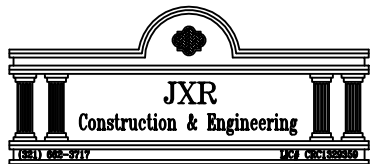


Zilla™ Two Piece Threaded Standoff			
	asphalt	tile	
ZSCQPC-	2.5AL	ZSCQPC-	6005 T5 aluminum
ZSC2PC-	6.5AL	ZSC2PC-	with threaded base allows for adjustable measurements up to 0.75"
ZSCQPC-	11.5AL	ZSCQPC-	6005 T5 aluminum
ZSCQPC-	2.5AL	ZSCQPC-	6005 T5 aluminum
ZSCQPC-	6.5AL	ZSCQPC-	6005 T5 aluminum
ZSCQPC-	11.5AL	ZSCQPC-	6005 T5 aluminum
ZSCQPC-	2.5AL	ZSCQPC-	6005 T5 aluminum
ZSCQPC-	6.5AL	ZSCQPC-	6005 T5 aluminum
ZSCQPC-	11.5AL	ZSCQPC-	6005 T5 aluminum
ZSCQPC-	2.5AL	ZSCQPC-	6005 T5 aluminum
ZSCQPC-	6.5AL	ZSCQPC-	6005 T5 aluminum
ZSCQPC-	11.5AL	ZSCQPC-	6005 T5 aluminum

ENGINEER:
 SALMAN ALAN AYASH, P.E.
 13229 SHARSWOOD
 ORLANDO, FL 32828
 (407)-716-7394 Lic# 49421

SOLAHART 302J INSTALLATION DETAIL

ENGINEER:
 SALMAN ALAN AYASH, P.E.
 13229 SHARSWOOD
 ORLANDO, FL 32828
 (407)-716-7394 Lic# 49421



drawn by
 J. RODRIGUEZ
 checked by
 J.R.
 date
 12-14-09
 scale
 1/2"=1'-0"
 job no.

Thermosiphon J and J Free Heat Closed Circuit Systems

These systems are suitable for multiple installations. They are suitable for frost and harsh water regions.

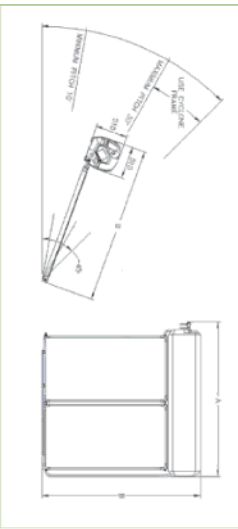
J and J Free Heat Systems														
Model	150 tank system	180 tank system	181 system	182 system	220 tank system	221 system	222 system	300 tank system	301 system	302 system	303 system	440 tank system	443 system	444 system
Tank model	150J	180J	180F	180F	220J	220F	220F	300J	300F	300J	300F	440J	440F	440F
J Free Heat	✓	✓	✓	✓	✓	✓	✓	✓	✓	✓	✓	✓	✓	✓
Collector model	150F	J	J	J	J	J	J	J	J	J	J	J	J	J
No. of collectors		1	1	1	2	1	2	1	2	1	2	3	3	4
Storage capacity	litres	150	180	180	180	220	220	300	300	300	300	440	440	440
	US gal	40	48	48	48	58	58	80	80	80	80	116	116	116
Delivery capacity	litres	130	130	160	160	200	200	240	240	240	240	400	400	400
	US gal	34	34	42	42	53	53	63	63	63	63	106	106	106
Boost capacity (electric or gas)	litres	75	75	90	90	110	110	150	150	150	150	220	220	220
	US gal	20	20	24	24	29	29	40	40	40	40	58	58	58
Weight empty	kg	56	102	66	108	154	78	124	170	99	145	187	229	290
	lbs	123	225	146	238	340	172	273	375	218	320	412	505	639
Weight full	kg	206	256	245	292	338	298	348	394	399	449	495	541	588
	lbs	454	564	540	644	745	657	767	869	880	990	1091	1193	1296
A - Width	m	1.40	1.40	1.62	1.62	2.42	2.42	2.43	2.43	2.43	3.38	3.41	3.49	4.44
	ft	55.1	55.1	63.8	63.8	95.3	95.7	95.7	95.7	95.7	133.1	137.4	137.4	174.8
B - Length	m	0.51	2.48	0.51	2.48	2.48	2.48	1.64	2.48	1.64	2.48	2.48	2.48	2.48
	ft	20.1	97.6	20.1	97.6	97.6	97.6	64.6	97.6	64.6	97.6	97.6	97.6	97.6

The J and J Free Heat systems can be installed as a solar preheater with an in-line Solihart gas booster water heater. Refer to the Solihart gas booster specification sheet for further details on the gas booster.

J Collector			
Aperture (heating) area	length	width	height
m ²	1.87	1.937	76.3
	mm	1022	40.3
Dimensions	width	mm	3.0
	height	mm	0.9
Capacity	empty	kg	42
	full	kg	46
Weight	empty	kg	42
	full	kg	46
Working pressure		psi	101
Absorber material		psi	12
Absorber surface		psi	12
Absorber material		psi	12
Riser material		psi	12
Number of risers		psi	12
Trey material		psi	12
Insulation material		psi	12
Glass		psi	12

Electric Boost Specifications					
Heating unit type *	Recovery rate @ 240 V and temperature rise of:	40°C	50°C	60°C	70°C
Supply voltage					
Rating	Current	Amperes	Amperes	Amperes	Amperes
	Capacity	litres	litres	litres	litres
	Weight	kg	kg	kg	kg
	Working pressure	psi	psi	psi	psi
	Absorber material	psi	psi	psi	psi
	Absorber surface	psi	psi	psi	psi
	Absorber material	psi	psi	psi	psi
	Riser material	psi	psi	psi	psi
	Number of risers	psi	psi	psi	psi
	Trey material	psi	psi	psi	psi
	Insulation material	psi	psi	psi	psi
	Glass	psi	psi	psi	psi

J and J Free Heat



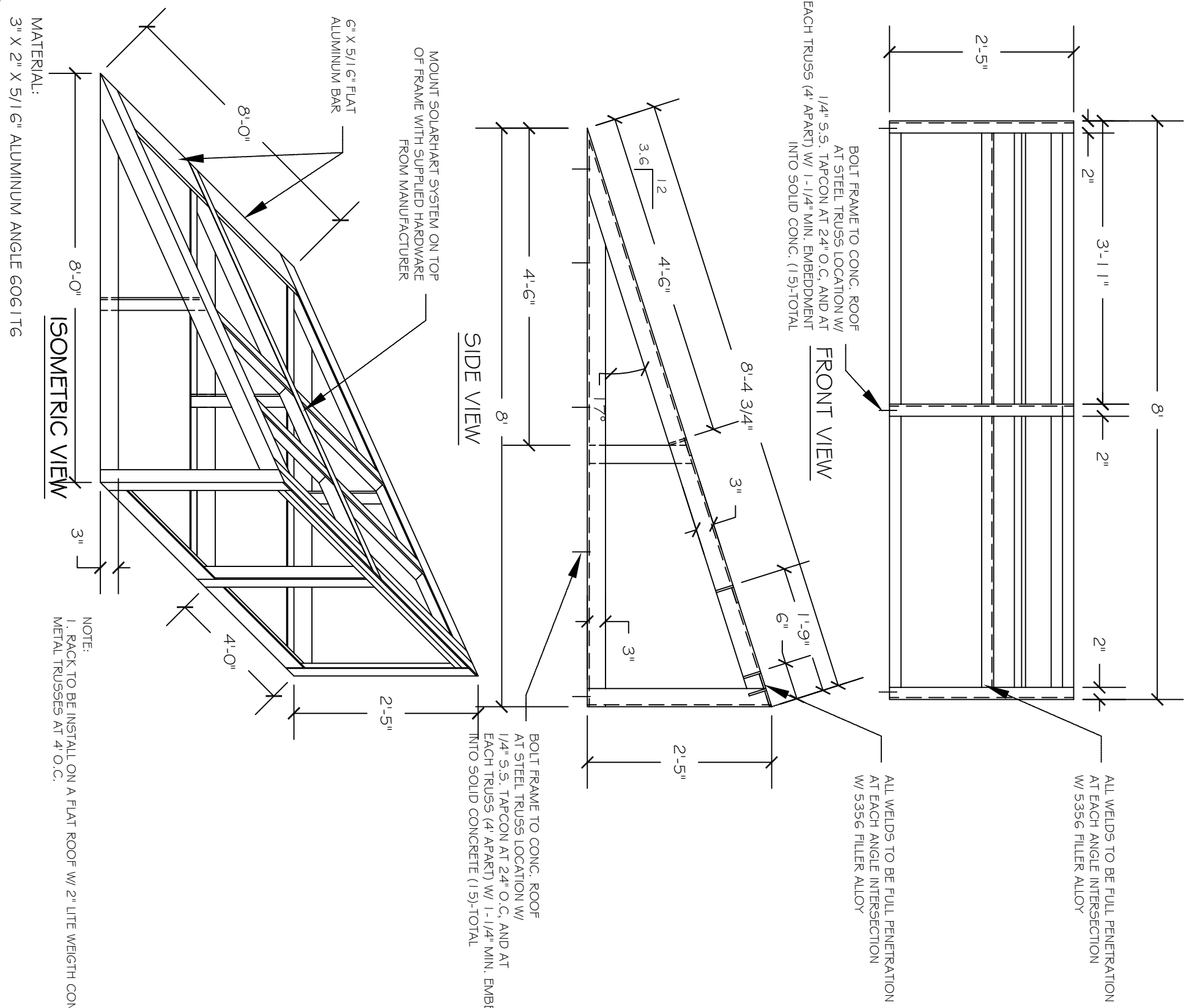
Water Supply			
TRV valve setting	ECV ¹ setting	Max. supply pressure with ECV	Water Connections
KPa	KPa	KPa	hot
1000	850	680	cold
psi	psi	psi	RP 3/4" / 20
145	125	100	R 1/2" / 15

Gas Boost (In Tank - Optional) Specifications

Model type*	Burner rating - Input / Output	Recovery rate	Primary voltage	Secondary voltage
FD15 gas booster fan forced	13 MJ/h / 10 MJ/h (2.8kW)	59 litres per hour @ 40°C rise	220 V - 250 V	12 V DC

* Suitable for hard or composite water areas

¹ Expansion Control Valve



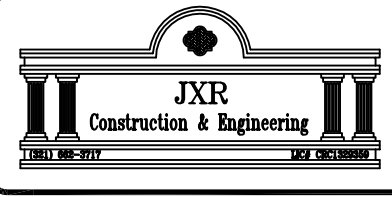
NOTE:
1. RACK TO BE INSTALLED ON A FLAT ROOF W/ 2" LITE WEIGHT CONC. OVER METAL TRUSSES AT 4' O.C.

THIS STRUCTURE HAS BEEN DESIGN TO MEET THE WIND LOAD REQUIREMENTS OF SECTION R301.2.1.1 OF THE FLORIDA BUILDING CODE 2007 EDITION— RESIDENTIAL AND ASCE 7-05, WITH 2009 REVISIONS

1. BASIC WIND SPEED— 140MPH (@ 3 SEC. GUST)
2. WIND IMPORTANT FACTOR 1.0
3. WIND EXPOSURE— CATEGORY B

drawing no. **S-1**

drawn by J. RODRIGUEZ
checked by J.R.
date 10-16-09
scale 3/16"=1'-0"
job no. ***



Davis & Cleaton
Engineering, Inc.
601 North Orlando Avenue
Suite 112
Maitland, FL 32751
(407)-539-2553 fax 35816

ALUMINUM RACK
SOLARHART 302J SYSTEM

REVISIONS
REVISION A