

SOLARHOT

2010 Retail Listings

Annual Product Catalog in effect April 1, 2010

Collectors and Mounting Options

SolarHot collectors are available in two different series and in three different sizes to match your needs and your budget.



Pages 2-4

SolVelox

The SolarHot SolVelox integrated pump station is designed to maximize efficiency in your solar thermal system.



Page 5

Tanks

Storage tanks are available in a variety of styles and sizes, with the option of having a SolVelox pre-mounted on the tank body.



Page 6

Pumps, Flanges, & Components

No matter the size of your solar system, we've got the pumps and parts to meet your needs.



Pages 7-8

Mechanical Packages

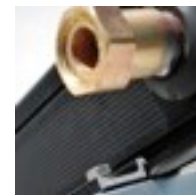
Everything you need to get your solar thermal system up and running.



Page 9

Roof Packages

Get the parts you need to mount your collectors to the roof and tie them into the rest of the system.



Pages 10-11

Software and Design Services

We offer Polysun 5 simulation software and the services of experienced engineers to give you the professional support you need.

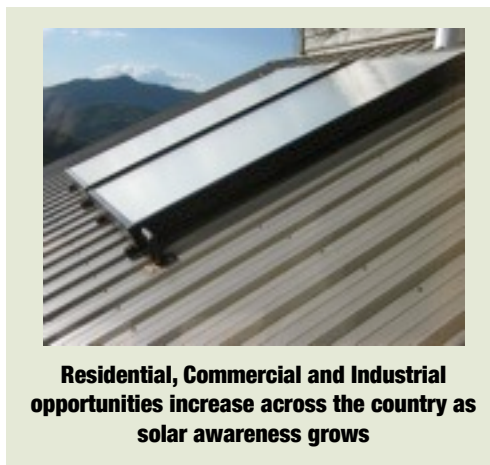


Pages 12-13

Exciting New Decade Ahead

We expect to see the solar thermal market bust out this year.

New regulations, legislation and incentives in conjunction with economic changes and consumer awareness could herald in a new age for solar water heating. Australia, Spain and others have set a precedent for solar heating mandates and now Hawaii joins this green movement this year. Other states are building their renewable portfolio with rebates and tax incentives and the Federal tax incentives are in place until 2016. These government programs boost the opportunities to build the market and educate the public about the benefits of solar.



Residential, Commercial and Industrial opportunities increase across the country as solar awareness grows

New products for easier installations

SOLARHOT now offers a Commercial SolVelox for larger systems utilizing an array of up to twelve collectors. Like the smaller residential SolVelox, which can handle up to six collectors, the Commercial SolVelox comes in both drainback and glycol models.

Also new for this year are flush mount roof kits for asphalt, tile and standing seam metal roofs. Our expanded line of mounting hardware simplifies the installation process, no matter what type of roof you may find yourself on.

The SOLARHOT Collector

Form and Function.

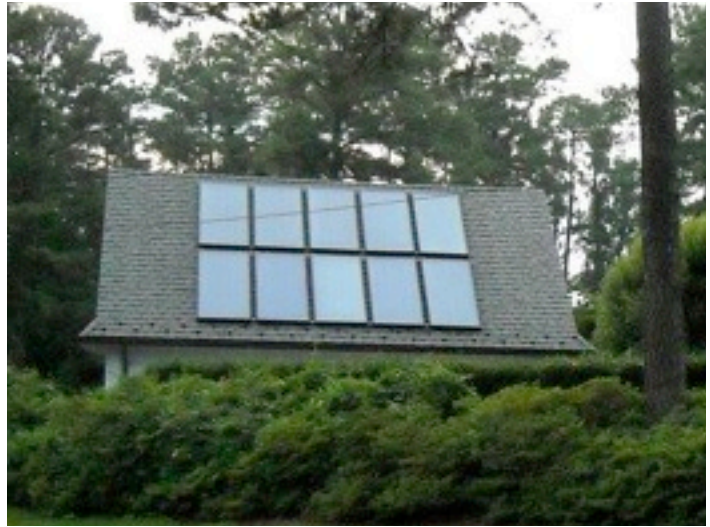
Maximum Performance

We offer two different series of collectors to match your solar needs. Our Silver series collectors are designed for warm climates with ample sunlight. The Silver series collector comes with an all copper, selective black paint absorber, black aluminum frame, and tempered glass. This series is designed to provide an economical model for those customers with a tighter budget.

Our Platinum series offer the highest level of performance and ease of installation. The Platinum series includes factory installed unions with gaskets to facilitate installation on the roof as well as Tinox coated absorbers to maximize the solar energy production from the panels.

Both series have mounting hardware that is designed to allow you to easily snap the collectors into their lower mounting clips thereby reducing the time you need to handle the collectors on the roof.

We also offer roof packages for various system sizes that include all the parts needed to integrate your collectors with the rest of the system.



Platinum Collectors

Part Number	Description	Price
S-C-179P26	Blue Sputter Coated 4x6.5	\$1,129.00
S-C-179P32	Blue Sputter Coated 4x8	\$1,259.00
S-C-179P40	Blue Sputter Coated 4x10	\$1,449.00

Silver Collectors

Part Number	Description	Price
S-C-179S32	Selective Black Paint 4x8	\$949.00
S-C-179S40	Selective Black Paint 4x10	\$1,149.00



Mounting Hardware



SolarHot Flush Mount Hardware

Includes butyl on the bottom of the feet, stainless steel lag bolts, and clip assemblies. Tighten down the clip assembly on the bottom two feet and slide the collector in place. Use one set per collector.

M-H-FMH Flush Mount Hardware \$85.59

SolarHot Fixed Tilt Hardware

Legs are 36" tall. Each kit includes 2 front feet and 2 back legs. Use one kit per collector. Requires stainless steel self tapping screws to attach to the collector.

M-H-7TM36 Fixed Tilt Mount Hardware \$124.00

SolarHot Rack Mount Hardware

A very popular option for every type of installation. There are no collector penetrations; the collectors attach with clips. The telescoping back legs of the rack mount hardware extend up to 6 feet allowing a lot of flexibility of tilt.

Rack Mount Kits

Number of Collectors	Part Number	Price	Each kit includes: -legs with butyl on the base -front feet with butyl on the base -cross-beam strut -clip assemblies -hanging brackets -stainless steel lags and washer
1	M-H-1panel	295.84	
2	M-H-2panel	471.79	
3	M-H-3panel	629.72	
4	M-H-4panel	837.75	
5	M-H-5panel	995.68	
6	M-H-6panel	1,153.61	

Components

Part Number	Description	Price
M-H-7FF	Front Feet	\$17.00
M-H-7BL	Telescoping Back Legs	\$79.10
M-H-CA	Clip Assemblies	\$32.75
M-H-7S156-52	52" Strut	\$28.74
M-H-7S156-1045	104" Strut	\$60.48
M-H-7S156-158	158" Strut	\$86.95
M-H-SPLICE	Strut Splice	\$6.05
M-H-HANGER	Hanger Brackets	\$8.25
M-H-2LS375	S.S. Lag Bolts	\$1.26

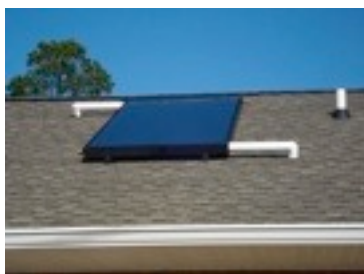
Rooftop Kits and Components

SolarHot Roof Kits

Roof kits are a convenient package of everything needed to connect your collectors to the roof and the rest of the system. Roof kits are available for either one- or two-collector systems, and either 1/2" or 3/4" pipes. SolarHot roof kits offer convenience and simplicity for rooftop mounting options.

	P-FT-RK150 1/2" Roof Kit for One-Collector System	P-FT-RK250 1/2" Roof Kit for Two-Collector System	P-FT-RK175 3/4" Roof Kit for One-Collector System	P-FT-RK275 3/4" Roof Kit for Two-Collector System
M-H-1F50	1	1		
M-H-1FG50	1	1		
M-H-1F75			1	1
M-H-1FG75			1	1
P-FT-1E10050	2	2		
P-FT-1E10075			2	2
P-FT-ROWKIT	1	1	1	1
M-H-FMH	1	2	1	2
PRICE	\$201.16	\$282.47	\$206.51	\$287.82

5% savings over purchasing separately

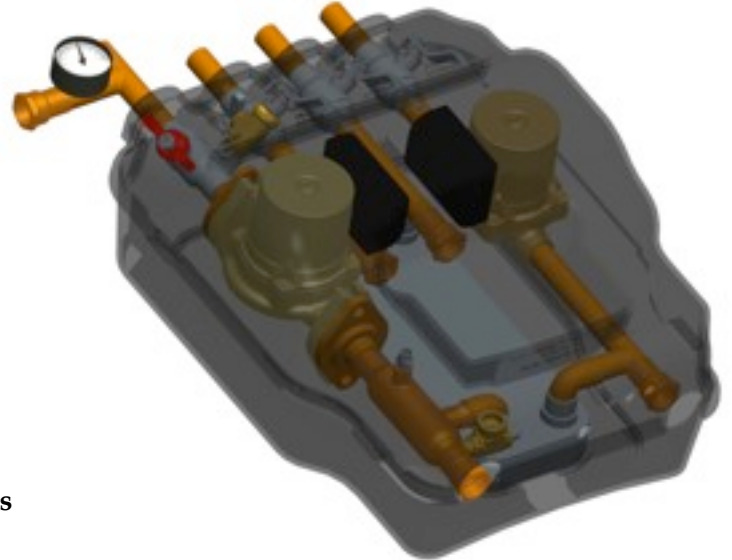


Individual Components

Part Number	Description	Price
M-H-1F50	1/2" Roof Flashing Base with Coolie Cap	\$21.95
M-H-1FG50	1/2" Roof Flashing Base with Gooseneck and Coolie Cap	\$31.15
M-H-1F75	3/4" Roof Flashing Base with Coolie Cap	\$26.78
M-H-1FG75	3/4" Roof Flashing Base with Gooseneck and Coolie Cap	\$34.13
M-H-1F100	1" Roof Flashing Base with Coolie Cap	\$34.10
M-H-1FG100	1" Roof Flashing Base with Gooseneck and Coolie Cap	\$38.61
P-FT-1E10050	Reducing Elbow: 1"x1/2" CXC 90deg.	\$8.51
P-FT-1E10075	Reducing Elbow: 1"x3/4" CXC 90deg.	\$7.42
P-FT-ROWKIT	Kit for connecting multiple collectors; Includes the following:	\$56.04
P-FT-3U100A	Male Half of 1" Gasketed Union	\$11.55
P-FT-3U100B	Union Half of 1" Gasketed Union	\$15.75
P-FT-3U100C	1" Union Gaskets (2)	\$1.52
P-FT-3U100G-D	Disk for Cap	\$3.43
P-FT-3U100G-N	Nut for Cap	\$4.38
P-FT-3U100G-P	Plug for Union	\$12.81

The SOLARHOT SolVelox

Efficiency and Simplicity.



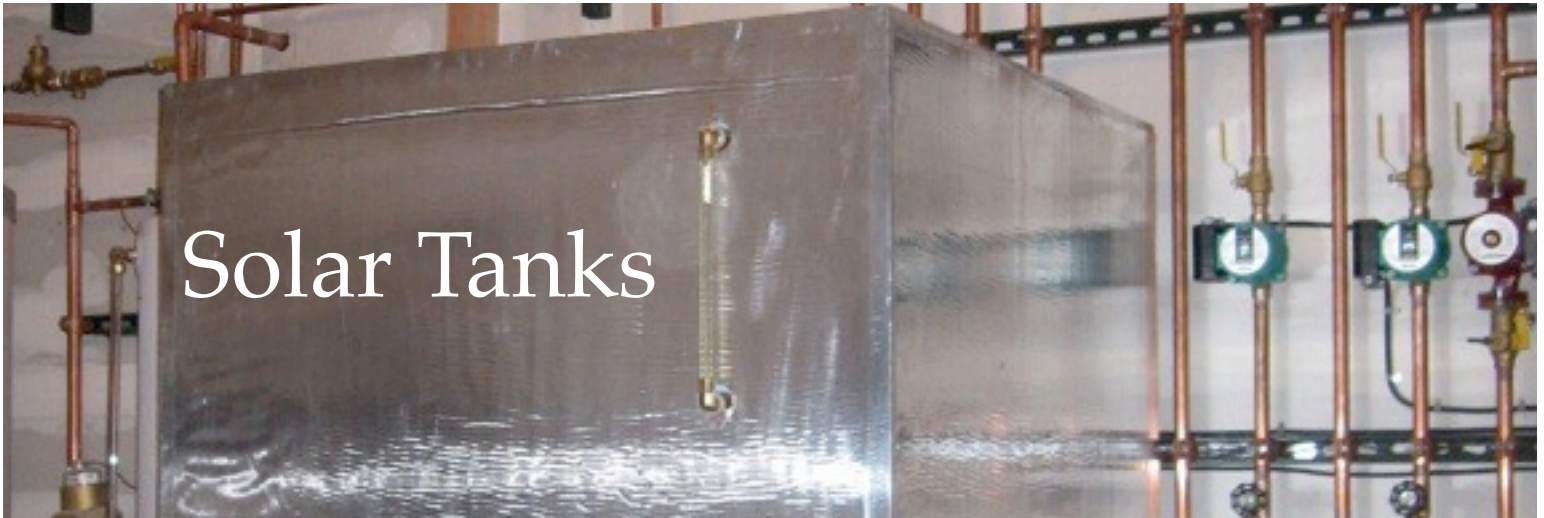
Engineered for efficiency, easy maintenance and perfect hydraulic performance, the SolVelox can turn any electric water heater into a solar heating system. Great for residential or small commercial installation of up to 6 collectors the SolVelox simplifies a solar installation to 4 connections: 2 to the tank and 2 to the collectors.

For larger systems of up to 12 collectors, we now offer the commercial SolVelox package, which integrates a larger heat exchanger and a variable speed pumps. The commercial SolVelox offers the convenience of our standard model for larger scale applications.



SolVelox Packages

Part Number	Description	Price
S-SVP-DB100	SolVelox Drainback Ready to mount on a tank	\$1,649.00
S-SV-DBTC100	SolVelox Drainback 80 Gallon Tank Package Pre-mounted on 80 gallon tank with electric backup. Package includes a 10 gallon stainless steel drainback tank.	\$3,574.28
S-SVP-DBT200	SolVelox Drainback 120 Gallon Tank Package Pre-mounted on 120 gallon tank with electric backup. Package includes a 10 gallon stainless steel drainback tank.	\$4,374.28
S-SVP-GC100	SolVelox Glycol Ready to mount on a tank	\$1,649.00
S-SVP-GT100	SolVelox Glycol 80 Gallon Tank Package Pre-mounted on 80 gallon tank with electric backup. Package includes a 2 gallon expansion tank.	\$3,115.70
S-SVP-GT200	SolVelox Glycol 120 Gallon Tank Package Pre-mounted on 120 gallon tank with electric backup. Package includes a 2 gallon expansion tank.	\$3,915.70
SUB-SV-CDB100-P	Commercial SolVelox Drainback Package	\$2,299.00
SUB-SV-CG100-P	Commercial SolVelox Glycol Package	\$2,299.00
SUB-SV-G100H	SolVelox for Space Heating Package Easily tie in radiant floors and other hydronic space heating applications.	\$1649.05



The storage tank of the right size and design is critical to your system. We offer pressurized glass lined tanks appropriate for residential through light commercial systems as well as collapsible and stainless steel tanks. Custom stainless steel tanks are built to your specifications with internal coiled heat exchangers or external brazed plate heat exchangers and pumps pre-mounted for easy installation.

We also offer a variety of drainback tanks and expansion tanks to fit systems of different sizes.



Storage Tanks

Part Number	Description	Price
P-T-80S	American Premier 80 gallon electric	\$1070.00
P-T-80R	Rheem 80 gallon Solaraide	\$1265.78
P-T-120S	Rheem 119 gallon Solaraide	\$1964.22
S-T-HX80R	Rheem 80 gallon Solaraide with internal heat exchanger	\$2417.80
S-T-120HXR	Rheem 119 gallon Solaraide with internal heat exchanger	\$2499.66

Custom Stainless Steel Tank **\$928.44 +(3.53 x tank volume)**

Add 3/4" Copper Heat Exchange Coils **\$6.00 per linear foot**

Add 1" Copper Heat Exchange Coils **\$7.40 per linear foot**

Collapsible Tank **call for pricing**

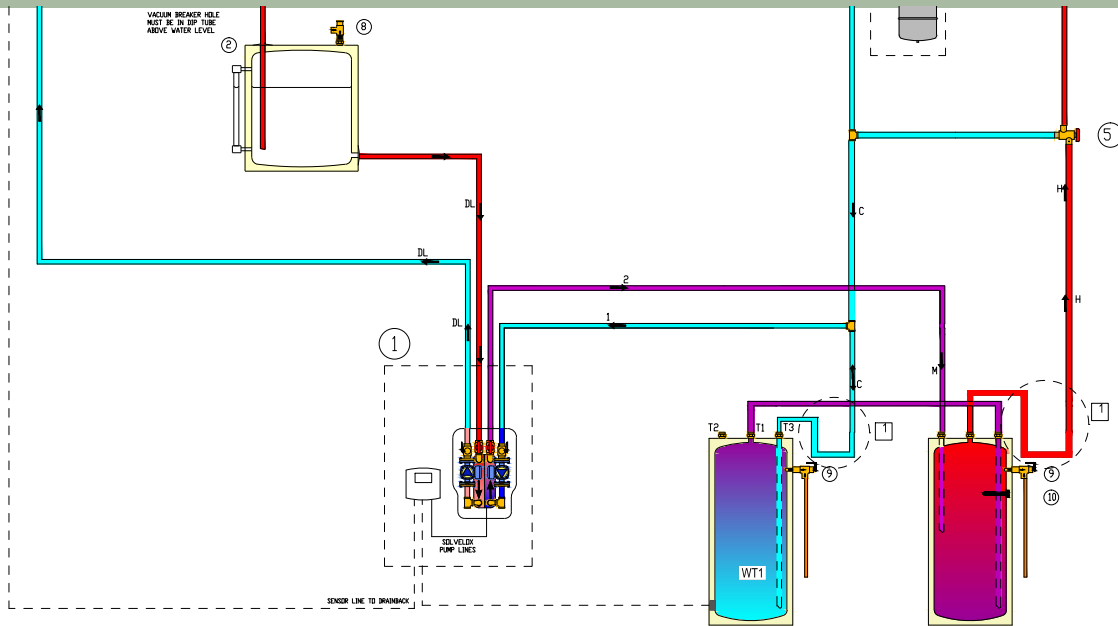
* No Discounts apply to Storage tanks

Drainback Tanks

Part Number	Description	Price
S-T-10SSDB	10 gallon stainless steel with sight glass	\$575.28
S-T-1522DB	15 gallon stainless steel with sight glass	\$679.00
S-T-20SSDB	20 gallon stainless steel with sight glass	\$829.00

Expansion Tanks

	Description	Price
P-ET-ST5	Polypropylene lined 2 gallon expansion tank	\$79.00
P-ET-ST12	Polypropylene lined 4.4 gallon expansion tank	\$107.00



Mechanical Packages

SOLARHOT offers convenient packages that include everything needed to get your solar water heating system up and running. Whether retrofitting an existing tank or replacing the entire water heating system, we've got you covered.

What's Included	Drainback Groups			Glycol Groups		
	DBS-B	DBS-B080T	DBS-B119T	GS-B	GS-B080T	GS-B120T
SolVelox	1	Pre-Installed!	Pre-Installed!	1	Pre-Installed!	Pre-Installed!
SolVelox on 80 Gallon Tank		1			1	
SolVelox on 120 Gallon Tank			1			1
Dip Tube	1	Pre-Installed!	Pre-Installed!	1	Pre-Installed!	Pre-Installed!
Drainback Tank	1	1	1			
Expansion Tank				1	1	1
Expansion Tank Mounting Kit				1	1	1
Pressure Relief Valve	1	1	1			
Mixing Valve	1	1	1	1	1	1
PRICE	\$2,384.38	\$3,734.38	\$4,534.38	\$1,914.70	\$3,264.70	\$4,064.70

B is appropriate for retrofitting a SolVelox to an existing tank

B080T is appropriate for a 1-2 collector system

B120T is appropriate for a 2-3 collector system

Pumps & Flanges



Bronze Pumps

Part Number	Description	Price
P-PAC-411A25	Wilo Star 8, 3/4" sweat	\$233.10
P-PAC-413A50	Wilo Star 21, 3-speed, flanged	\$224.00
P-PAC-411A70	Wilo Star 32, flanged	\$317.95
P-PAC-411E9	ARMFlo E9, flanged	\$539.00

Cast Iron Pumps

Part Number	Description	Price
P-PAC-513A50	Wilo Star 21, 3-speed flanged	\$149.00
P-PAC-511A70	Wilo Star 32, flanged	\$247.32
P-PAC-511E9	ARMflo E9 flanged	\$447.20

DC Pumps

Part Number	Description	Price
P-PDC-10	Pump - El-Sid 10 watt DC	\$429.00
P-PDC-501S20	Pump - El-Sid 20PV DC	\$565.00

Bronze Flanges

Part Number	Description	Price
P-FL-4075	3/4" Sweat flange; set of 2	\$36.00
P-FL-4077	3/4" NPT flange; set of 2	\$36.00
P-FL-4177	3/4" NPT shut off flange; each	\$26.50
P-FL-4275D	3/4" SWT shut off flange with drain; set of 2	\$63.00
P-FL-4277D	3/4" NPT shut off flange with drain; set of 2	\$63.00
P-FL-40102	1" NPT flange; set of 2	\$38.00
P-FL_41102	1" NPT shut off flange: set of 2	\$56.00
P-FL-42102	1" NPT shut off flange with drain; each	\$33.50
P-FL-42415	1 1/4" NPT shut off flange with drain; each	\$39.73

Cast Iron Flanges

Part Number	Description	Price
P-FL-5077	Flange - 3/4" NPT flange; set of 2	\$16.00
P-FL-50101	Flange - 1" NPT flange; set of 2	\$18.00



Controls

Basic Differential Control:

1 Output - Relay

3 Temperature Inputs

Includes 2 sensors, line cord and outlet

LCD Display



Part Number	Description	Price
S-DC-12S	Differential control - Basic	\$233.70
S-DC-36	Differential control - Advanced	\$399.00

Advanced Differential Control:

3 Outputs - 2 variable speed, 1 relay

6 Temperature Inputs, 1 Flow Meter Input

Includes:

3 sensors

8 Pre-loaded system templates

LCD Display

SD card for monitoring

BTU monitoring available



Part Number	Description	Price
	Control Extras	
S-S-1KPS	Sensor - 1K probe for the Basic control	\$20.49
S-S-1KS	Sensor - Basic 1 K lug sensor	\$23.70
S-S-DFS	Direct Flow Sensor for use with Advanced Control	\$234.50
	Set Point Controls	
E-TC-110SP	Digital Set-point controller - Line voltage	\$189.00
E-TC-24SP	Digital Set-point controller - 24V	\$180.00



Components

Plate Heat Exchangers

Part Number	Description	Price
P-HX-22037	3.1 x 7.6 - 20 copper brazed 3/4" male threaded	\$157.50
P-HX-23037	3.1 x 7.6 - 30 copper brazed 3/4" male threaded	\$203.00
P-HX-214412	4.2 x 12 - 14 copper brazed 3/4" ports	\$289.77
P-HX-210512	5x12 - 10 copper brazed 3/4" sweat	\$239.00
P-HX-220512	5x12 - 20 copper brazed 3/4" ports	\$332.50
P-HX-214512	5x12 - 14 copper brazed, 1" NPT	\$325.15
P-HX-220512-100	5x12 - 20 copper brazed, 1" MPT	\$332.50
P-HX-230512-100	5x12 - 30 copper brazed and 1" MPT	\$378.00
P-HX-810512	5x12 - 10 nickel brazed	\$428.37

Accessories

Part Number	Description	Price
M-I-6HXIK	Insulation kit for 5x12 10 plate heat exchanger	\$39.95
P-FT-3Y4076	Y strainer, 3/4" bronze with 20 mesh	\$61.36

Gauges

Part Number	Description	Price
P-G-2PG26BM	Pressure Gauge - 2" Dial 1/4" CBM	\$5.64
P-G-WT26	Tridicator - 1/4 inch NPT, 1 5/8" CBM	\$23.52
P-G-T50	Thermometer - 2-1/2" dial, 1/2" CBM	\$24.22
P-G-FMS535	Flow Meter, 1/2 to 5 gpm	\$159.00
P-G-FMA535	Adjustable Flow meter 1/2 to 3.5 gpm	\$179.00

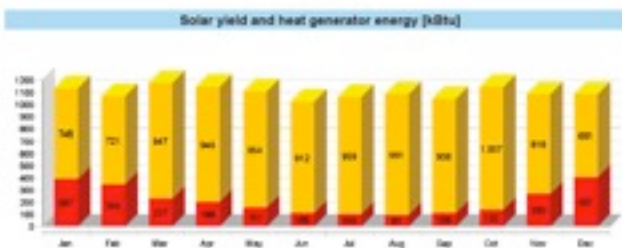
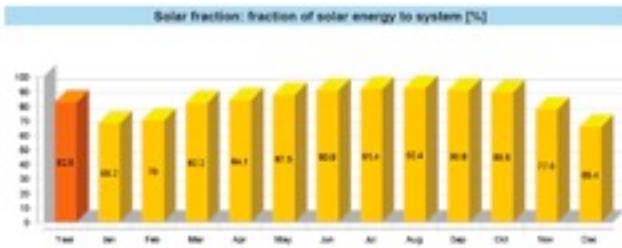
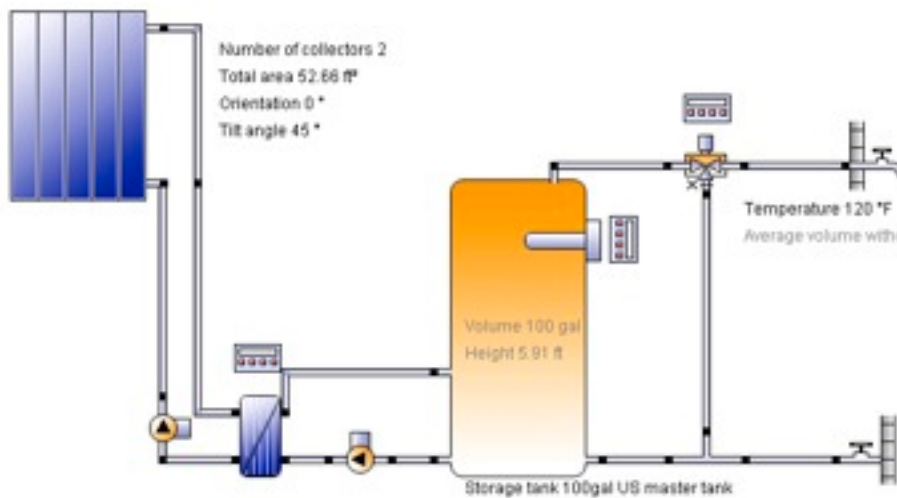
Valves

Part Number	Description	Price
P-V-2ASLT77	Low Temperature Mixing Valve - 60-120°F	\$183.37
P-V-2ASV77	Mixing Valve - anti-scald/anti chill valve 3/4"	\$149.00
P-V-3CV77	Check Valve - 3/4" Brass FPT	\$13.83
P-V-3SC75	Check Valve - 3/4" swing IPS	\$16.59
P-V-3FS10-F	Flow Switch - brass	\$384.55
P-V-3PB100	Balancing Valve - 1 inch IPS	\$147.07
P-V-3PB75	Balancing Valve - 3/4" sweat	\$115.57
P-V-3PR76	Relief Valve - 75 psi 3/4" brass NPT	\$11.10
P-V-3PR30	Pressure Relief Valve - 30 psi 3/4" brass NPT	\$36.86
P-V-3PT76	T & P Valve - standard	\$16.00
P-V-3PT76L	T & P valve - long stem model	\$34.20
P-V-EBV024	Zone Valve - 3/4" 2 way 24 VAC	\$203.98
P-V9ZACT	Diverting Valve Actuator without End Switch, 120 V, fits 3/4" or 1" 3-way diverting valve	\$89.00
P-V-9D376	Diverting Valve, 3-way, 3/4 sweat connections, flow to 20 gpm; REQUIRES ACTUATOR P-V-9ZACT.	\$69.90
P-V-9D3100	Diverting Valve, 3-way, 1" sweat connections, flow to 20 gpm; REQUIRES ACTUATOR P-V-9ZACT.	\$105.42

Air Elimination

Part Number	Description	Price
P-V-2CV26	Coin vent - 1/8" NPT	\$4.99
P-V-4AV25	Air Vent - Automatic Universal brass	\$34.27
P-V-SAE75	3/4" Spirovent Jr Air Eliminator	\$279.83

Design Software



How Polysun 5 can help you:

- * Accelerates your planning process
- * Provides reliable yield forecasts
- * Enables easy optimization of existing and new systems
- * Provides information needed when applying for subsidies
- * Easily generates PDF reports to convince your customers

Polysun 5

Simulation Software for:

- * Solar Thermal Systems
- * NEW: Geothermal Systems
- * NEW: Photovoltaics
- * Hot Water and Space Heating
- * Industrial Applications

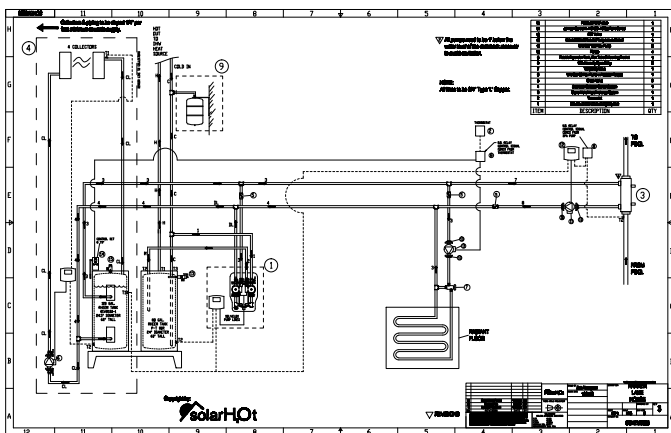
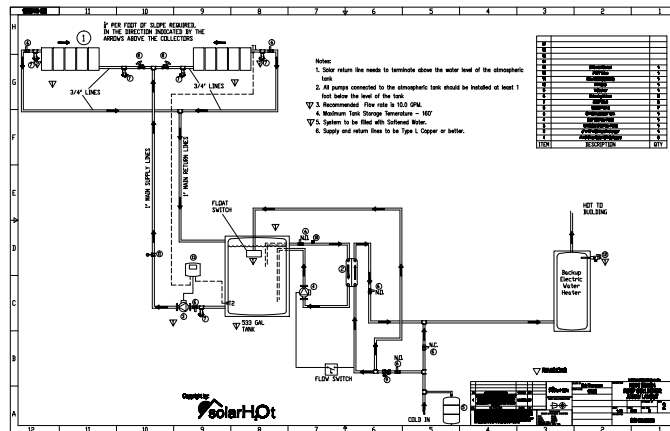
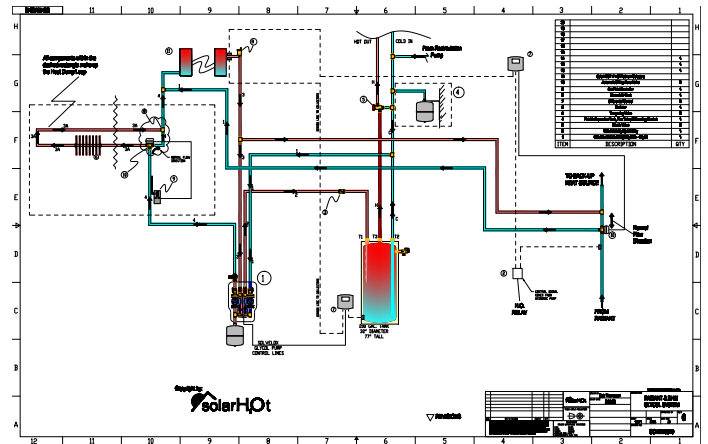
Highlights - Polysun 5

- * Total flexibility in the design of solar thermal systems
- * Extensive component catalogues
- * Simple analysis and evaluation of simulations through graphics and reports
- * Dynamic simulation with variable timesteps
- * Wide range of standard and company templates
- * Worldwide meteorological data for 7400 locations, new locations can be individually defined
- * All features exist in English, Spanish, Portuguese, French, Italian, Czech, German, Chinese and Greek

		Light	Professional	Designer	
Solar thermal		Polysun Solarthermal Simulation	\$ 159	\$ 779	\$ 1,949
Photovoltaic		Polysun Photovoltaic Simulation	\$ 159	\$ 489	\$ 489
Heat pump		Polysun Heatpump Simulation	\$ 239	\$ 1,169	\$ 2,919
Cooling		Polysun Cooling Simulation	\$ 149	\$ 399	\$ 824

Engineering and Design Services

SOLARHOT offers full engineering and design service from an experienced and highly qualified team. We can help you with all aspects of your custom residential, industrial and commercial projects including system sizing, performance simulation, wind load calculations, etc.



All quoted prices are exclusive of freight and insurance. All prices FOB Morrisville, NC.

Possession of the SOLARHOT price list does not constitute an offer to sell. All prices and product specifications are subject to change without notice.

MasterCard/Visa/Discover accepted or 2% cash discount.

All prices include crating. \$20 pick up credit per collector.

Free Freight Allowance for orders over \$25,000.



SOLARHOT Effective April 15, 2010

