

FABRIC-SHIELD™ STORM PANEL

MAXIMUM ALLOWABLE PRESSURES :

DIRECT MOUNT	TRACK MOUNT
-66.0 PSF	-60.0 PSF
+62.0 PSF	+62.0 PSF

MAXIMUM ALLOWABLE SPAN: 9' - 2 7/8"
(FOR ALL MOUNTING CONDITIONS)

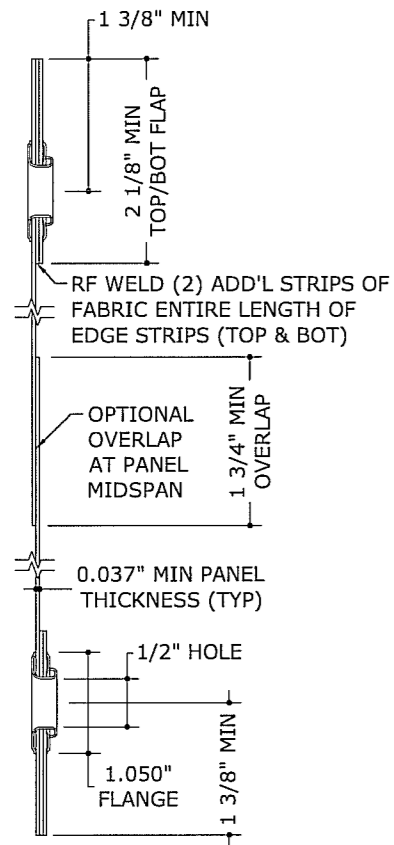
MINIMUM ALLOWABLE WIDTH (NON-SPAN DIMENSION):	12.0"
MINIMUM ALLOWABLE SPAN:	12.0"

SPAN NOTES:

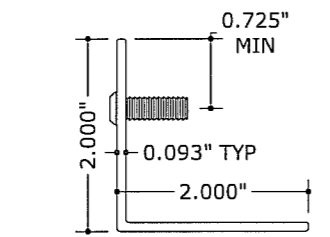
- ALLOWABLE PRESSURES SHALL NOT BE EXCEEDED.
- PANEL SPANS LONGER THAN MAXIMUM NOTED ABOVE ARE NOT ACCEPTABLE.
- PANEL SPANS LESS THAN MINIMUM NOTED ABOVE ARE NOT ACCEPTABLE.
- NO SEPARATION FROM GLASS IS REQUIRED WHEN PANEL SPAN IS GREATER THAN MINIMUM SPAN NOTED ABOVE.
- VALID FOR PANELS MOUNTED VERTICALLY OR HORIZONTALLY.

GENERAL NOTES:

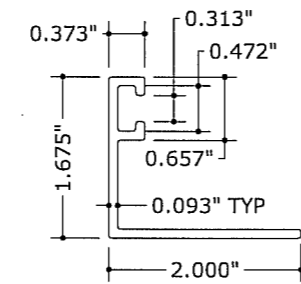
- THIS STORM PANEL SYSTEM HAS BEEN TESTED AND EVALUATED AS A LARGE MISSILE IMPACT PROTECTIVE SYSTEM IN ACCORDANCE WITH THE 2004 FLORIDA BUILDING CODE AND THE 2003 INTERNATIONAL BUILDING/RESIDENTIAL CODE, FOR USE OUTSIDE FLORIDA'S HIGH VELOCITY HURRICANE ZONE (HVHZ) ONLY.
- THIS SHUTTER SYSTEM HAS BEEN SUBMITTED TO ICC-ES FOR EVALUATION AS A LARGE MISSILE IMPACT PROTECTIVE SYSTEM.
- NO 33-1/3% INCREASE IN ALLOWABLE STRESS HAS BEEN USED IN THE DESIGN OF THIS PRODUCT. WIND LOAD DURATION FACTOR $C_d=1.6$ HAS BEEN USED FOR WOOD ANCHOR DESIGN.
- POSITIVE AND NEGATIVE DESIGN PRESSURES TO BE USED WITH THESE DRAWINGS SHALL BE DETERMINED BY OTHERS FOR SPECIFIC JOBS IN ACCORDANCE WITH THE GOVERNING CODE. WHEN CALCULATING PRESSURES PER ASCE 7-98 (OR LATER EDITION), USE OF DIRECTIONALITY FACTOR $K_d=0.85$ IS ALLOWED.
- THE SHUTTER SYSTEM DETAILED HEREIN IS GENERIC AND DOES NOT PROVIDE INFORMATION FOR A SPECIFIC SITE. IF SITE CONDITIONS DEVIATE FROM THE CONDITIONS DETAILED HEREIN, A LICENSED ENGINEER OR REGISTERED ARCHITECT SHALL PREPARE SITE SPECIFIC DOCUMENTS TO BE USED IN CONJUNCTION WITH THIS DOCUMENT.
- PERMIT HOLDER SHALL VERIFY THE ADEQUACY OF THE EXISTING STRUCTURE TO WITHSTAND NEW SUPERIMPOSED LOADS.
- STORM PANELS SHALL BE PVC COATED WOVEN POLYESTER FABRIC (THICKNESS $t=0.037"$) WITH A MIN. $F_u=15.794$ KSI.
- PANELS SHALL BE PERMANENTLY LABELED WITH A MINIMUM OF ONE LABEL PER PANEL AS FOLLOWS:
WAYNE-DALTON CORP.
FLB DWG NO. 04-WDF-0004
REFERENCE FLORIDA STATEWIDE APPROVAL
- STORM PANELS HAVE BEEN DESIGNED AND TESTED TO THE MAXIMUM SPAN AND LOADS SHOWN ON THESE DRAWINGS. REFERENCE HURRICANE ENGINEERING & TESTING, INC (HETI OF MIAMI, FL) TEST REPORTS Nos. HETI-04-1907, HETI-04-1390, HETI-03-1873, HETI-03-1875, HETI-03-1885a, HETI-03-1885b, & HETI-04-T224.
- PANELS MAY BE MOUNTED HORIZONTALLY WHERE APPLICABLE (i.e. WITH LINE OF ANCHORAGE IN VERTICAL DIRECTION).
- ALL BOLTS & WASHERS SHALL BE ZINC COATED, GALVANIZED OR STAINLESS STEEL WITH A MINIMUM TENSILE STRENGTH OF 60 KSI.
- ALL ACCEPTANCE CRITERIA HAVE BEEN MET FOR THIS SHUTTER AS A NON-POROUS SYSTEM, AS DEFINED IN ASTM E1996. IN KEEPING WITH THIS STANDARD, NO MINIMUM SEPARATION FROM THE GLAZING BEING PROTECTED IS REQUIRED, AND BREAKING OF THIS GLAZING DOES NOT COMPROMISE THE BUILDING ENVELOPE.



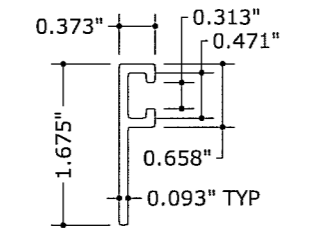
1 PANEL PROFILE
1 6" = 1'-0"



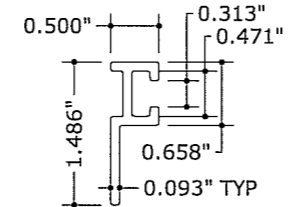
2 STUDDED ANGLE
1 6" = 1'-0"



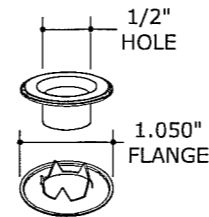
3 "F" ANGLE
1 6" = 1'-0"



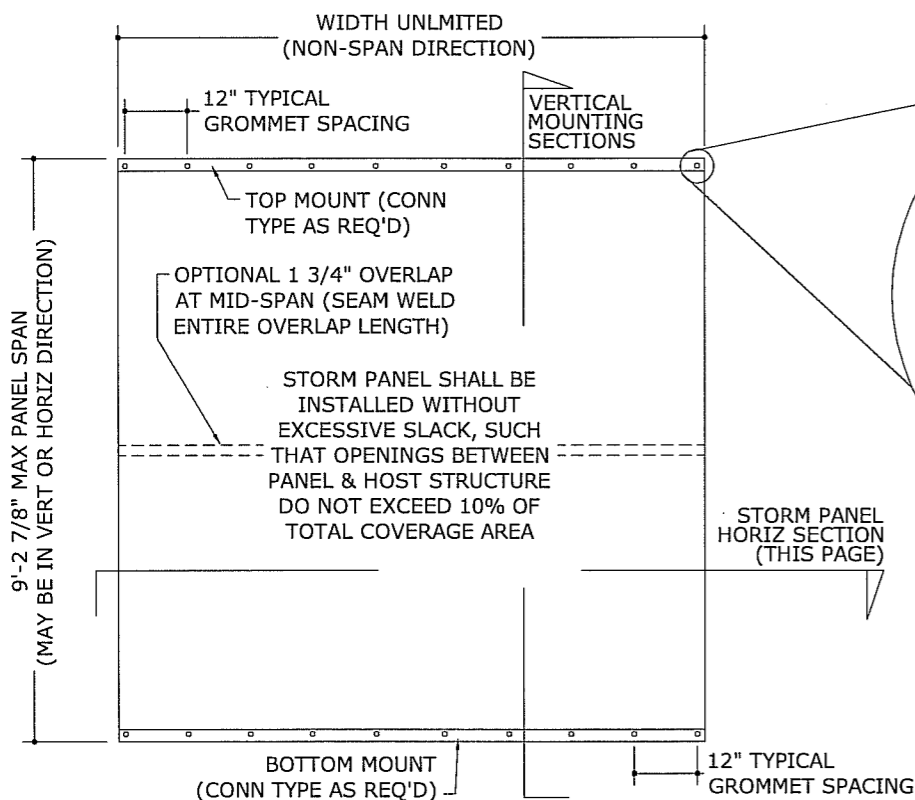
4 "F" TRACK
1 6" = 1'-0"



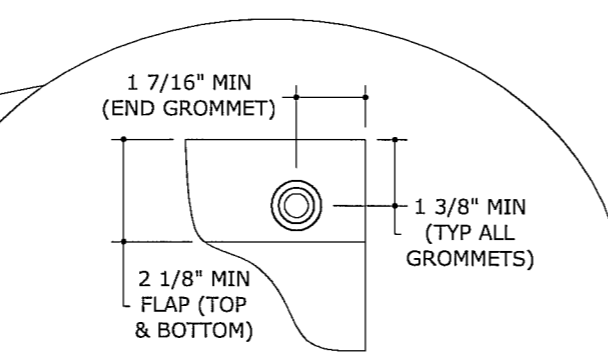
5 "BF" TRACK
1 6" = 1'-0"



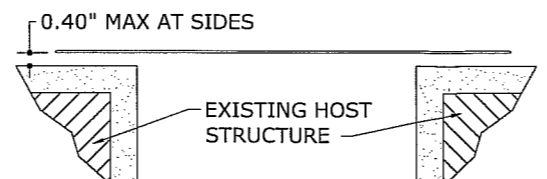
6 #4 GROMMET
1 6" = 1'-0" ISOMETRIC



7 TYPICAL VERTICAL MOUNT
1 N.T.S. ELEV



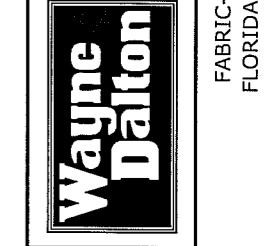
8 CORNER GROMMET
1 3" = 1'-0" ELEV



9 HORIZONTAL SECTION
1 N.T.S. HORIZ SECTION

FRANK L. BENNARDO, P.E.
PE0046549
11/18/2005
FRANK L. BENNARDO, P.E., INC.
CONSULTING ENGINEERS
4441 NORTH DIXIE HIGHWAY
BOCA RATON, FL 33431
(561) 391-2888 FAX: (561) 391-2862
WWW.FLBENGINEERING.COM
CERTIFICATE OF AUTHORIZATION: #98865

MANUFACTURED BY:
WAYNE-DALTON CORP
3395 ADDISON DRIVE
PENSACOLA, FL 32514
www.wayne-dalton.com
FABRIC-SHIELD STORM PANEL
FLORIDA STATEWIDE APPROVAL



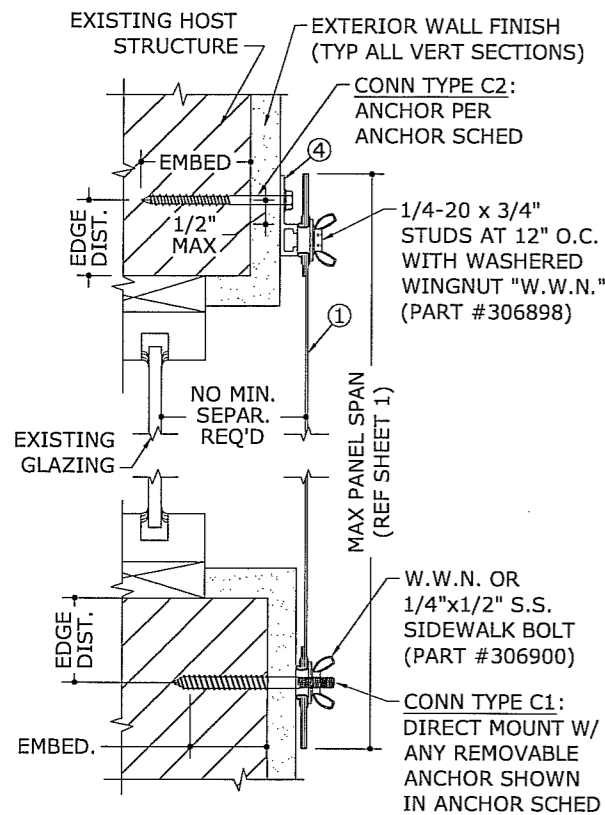
REMARKS	DWN	CHKD	DATE
ADD'L ANCHOR SCHEDULE	CL	FLB	9/2/2004
ANCHOR SCHED MODS	CL	FLB	10/5/04
2004 FBC	CL	FLB	8/5/05
ADD "SPDS" OPTION	CL	FLB	11/17/05

THIS DOCUMENT IS THE PROPERTY OF FRANK L. BENNARDO, P.E. AND SHALL NOT BE REPRODUCED IN WHOLE OR PART WITHOUT WRITTEN CONSENT OF FRANK L. BENNARDO, P.E.
** ALTERATIONS, ADDITIONS, HIGHLIGHTING, OR OTHER MARKINGS TO THIS DOCUMENT ARE NOT PERMITTED AND INVALIDATE OUR CERTIFICATION.

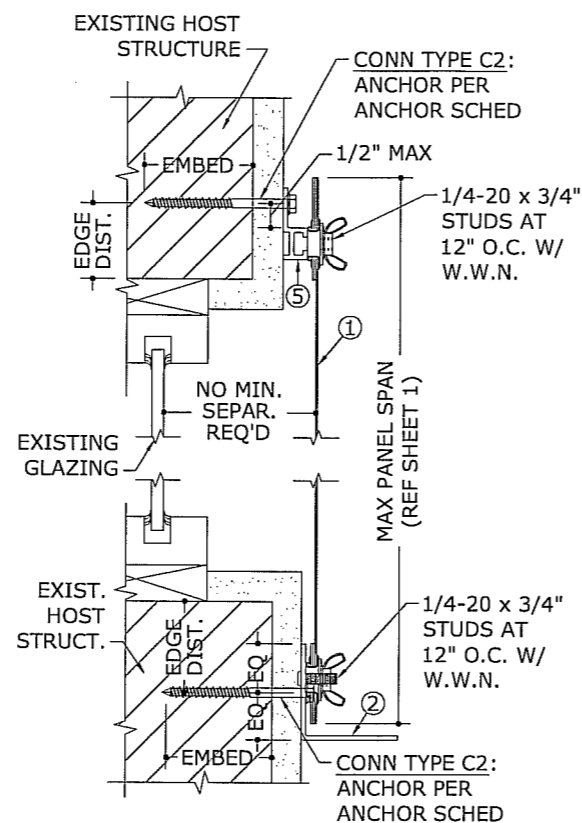
COPYRIGHT 2004 FRANK L. BENNARDO P.E.
04-WDF-0004
PAGE SCALE:
DESCRIPTION:
WAYNE-DALTON PART #317477

F:\01 Project Files\Wayne-Dalton (WDF)\2004 Jobs\04-WDF-0004 Fabric-Shield Storm Panel + Tracks (FSA)\04-WDF-0004 Fabric-Shield Storm Panel + Tracks (FSA).dwg
11/18/2005 - 10:36am clangley

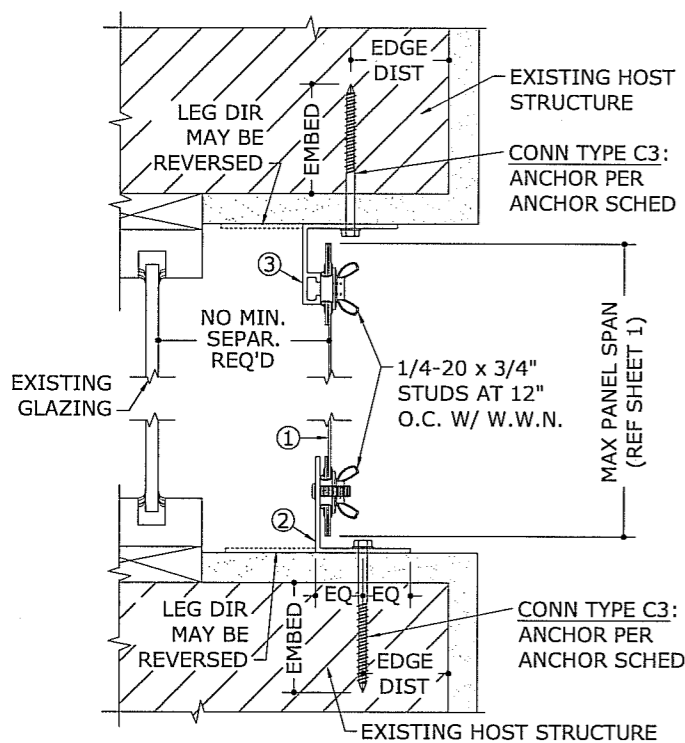
11/18/2005



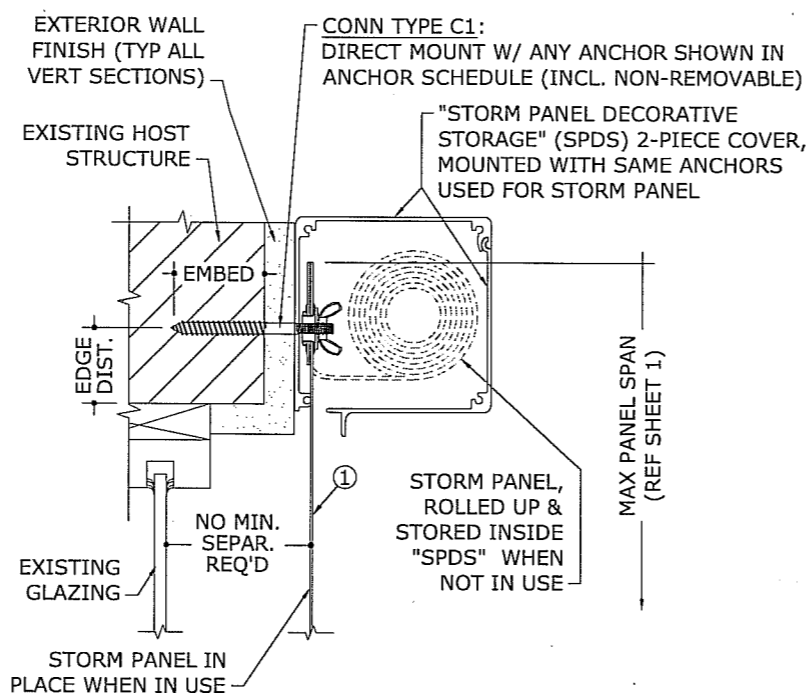
1 MOUNTING SECTION
3" = 1'-0" VERT SECTION



2 MOUNTING SECTION
3" = 1'-0" VERT SECTION



3 MOUNTING SECTION
3" = 1'-0" VERT SECTION



4 "SPDS" SECTION (OPTIONAL)
3" = 1'-0" VERT SECTION

ANCHOR SCHEDULE 1

HOST STRUCT.	ANCHOR	LOAD (psf)	3/4" MIN EDGE DISTANCE (UNLESS NOTED OTHERWISE)								
			Spans Up To 4'-0"			Spans Up To 6'-0"			Spans Up To 9'-3"		
			CONN TYPE	CONN TYPE	CONN TYPE	CONN TYPE	CONN TYPE	CONN TYPE	CONN TYPE	CONN TYPE	CONN TYPE
WOOD	1/4" LAG SCREW WITH MIN 2-3/32" THREAD PENETR.	30	12"	12"	5"	11"	4"	7"	5"	5"	5"
		38	12"	12"	4"	8"	3"	4"	4"	4"	4"
		47	10"	3"	7"	3"	4"	4"	4"	4"	4"
		54	9"	3"	6"	3"	4"	4"	4"	4"	4"
	66	7"	3"	5"	3"	3"	3"	3"	3"	3"	3"
	1/4" TAPCON (ELCO/ITW) OR #14 WOOD SCREW W/ 1 1/2" MIN EMBED	30	12"	12"	6"	11"	4"	7"	3"	3"	3"
		38	12"	12"	5"	9"	3"	6"	6"	6"	6"
		47	10"	4"	7"	3"	4"	4"	4"	4"	4"
		54	9"	3"	6"	3"	4"	4"	4"	4"	4"
	66	7"	3"	5"	3"	3"	3"	3"	3"	3"	3"
	1/4" ELCO PANELMATE (MALE OR FEMALE) WITH 1-7/8" MIN EMBED *	30	12"	12"	12"	12"	12"	12"	12"	12"	12"
		38	12"	12"	12"	12"	12"	12"	12"	12"	10"
47		12"	12"	12"	12"	12"	12"	12"	12"	8"	
54		12"	12"	12"	12"	12"	11"	12"	12"	6"	
66	12"	12"	12"	12"	12"	9"	10"	5"	5"	5"	
5/16" HANGER BOLT WITH 2-1/2" MIN EMBED & 1-1/4" MIN EDGE DIST *	30	12"	12"	12"	12"	12"	12"	12"	12"	12"	
	38	12"	12"	12"	12"	12"	12"	12"	12"	12"	
	47	12"	12"	12"	12"	12"	12"	12"	12"	9"	
	54	12"	12"	12"	12"	12"	12"	12"	12"	7"	
66	12"	12"	12"	12"	12"	10"	11"	6"	6"	6"	
3/8" HANGER BOLT WITH 3" MIN EMBED & 1-1/2" MIN EDGE DIST *	30	12"	12"	12"	12"	12"	12"	12"	12"	12"	
	38	12"	12"	12"	12"	12"	12"	12"	12"	12"	
	47	12"	12"	12"	12"	12"	12"	12"	12"	10"	
	54	12"	12"	12"	12"	12"	12"	12"	12"	7"	
66	12"	12"	12"	12"	12"	12"	11"	6"	6"	6"	

ANCHOR NOTES:

- 1) 1/4" TAPCONS SHALL BE BY ITW OR BY ELCO, AS LISTED IN APPROPRIATE ANCHOR SCHEDULE. "ELCO PANELMATE" ANCHORS MAY BE MALE OR FEMALE ONLY, AS ILLUSTRATED.
- 2) ENSURE MINIMUM EDGE DISTANCE FOR ALL ANCHORS PER RESPECTIVE ANCHOR SCHEDULE. EDGE DISTANCE OF 3/4" IS ACCEPTABLE FOR ANCHORS TO WOOD, EXCEPT FOR 5/16" AND 3/8" HANGER BOLTS. REFERENCE ANCHOR SCHEDULE FOR MINIMUM EDGE DISTANCE REQUIREMENTS FOR THESE ANCHORS.
- 3) MINIMUM EMBEDMENT SHALL BE AS NOTED IN ANCHOR SCHEDULE. MINIMUM EMBEDMENT AND EDGE DISTANCE EXCLUDES STUCCO, FOAM, BRICK, AND OTHER WALL FINISHES.
- 4) ANCHORS SHALL BE INSTALLED IN ACCORDANCE WITH MANUFACTURERS' RECOMMENDATIONS.
- 5) WHERE EXISTING STRUCTURE IS WOOD FRAMING, EXISTING CONDITIONS MAY VARY. FIELD VERIFY THAT ANCHORS ARE INTO ADEQUATE WOOD FRAMING MEMBERS, NOT INTO PLYWOOD.
- 6) ANCHORS FASTENED TO NARROW FACE OF STUD FRAMING SHALL BE LOCATED IN CENTER OF NOMINAL 2x4 (MIN) WOOD STUD (i.e. 3/4" EDGE DISTANCE IS ACCEPTABLE FOR ANCHORS TO WOOD FRAMING). WOOD STRUCTURE SHALL BE "SOUTHERN PINE" G=0.55 OR GREATER DENSITY.
- 7) ANCHOR SCHEDULE APPLIES FOR ALL PRODUCTS CERTIFIED HEREIN, BUT ONLY PROVIDES MAXIMUM ALLOWABLE ANCHOR SPACING. MAXIMUM ALLOWABLE SPANS AND PRESSURES INDICATED IN SPAN SCHEDULE SHALL APPLY.
- 8) MACHINE SCREWS SHALL HAVE MINIMUM OF 1/4" ENGAGEMENT OF THREADS IN BASE ANCHOR AND MAY HAVE A PAN HEAD, TRUSS HEAD, OR WAFER HEAD ("SIDEWALK BOLT") U.N.O.
- 9) DESIGNATES ANCHOR CONDITIONS WHICH ARE NOT ACCEPTABLE FOR USE.
- 10) * DESIGNATES ANCHORS WHICH ARE REMOVABLE AND MAY BE USED FOR DIRECT MOUNT INSTALLATIONS.

FRANK L. BENNARDO, P.E., INC.
CONSULTING ENGINEERS
4441 NORTH DIXIE HIGHWAY
BOCA RATON, FL 33431
(561) 391-2888 FAX: (561) 391-2862
WWW.FLBENGINEERING.COM
CERTIFICATE OF AUTHORIZATION: #9885

MANUFACTURED BY:
Wayne-Dalton Corp
3395 ADDISON DRIVE
PENSACOLA, FL 32514
www.wayne-dalton.com
FABRIC-SHIELD STORM PANEL
FLORIDA STATEWIDE APPROVAL



REMARKS	DWN	CHKD	DATE
ADDL ANCHOR SCHEDULE	CL	FLB	9/22/2004
ANCHOR SCHED MODS	CL	FLB	10/5/04
2004 FBC	CL	FLB	8/5/05
ADD "SPDS" OPTION	CL	FLB	11/17/05

THIS DOCUMENT IS THE PROPERTY OF FRANK L. BENNARDO, P.E. AND SHALL NOT BE REPRODUCED IN WHOLE OR PART WITHOUT WRITTEN CONSENT OF FRANK L. BENNARDO, P.E.
* ALTERATIONS, ADDITIONS, HIGHLIGHTING, OR OTHER MARKINGS TO THIS DOCUMENT ARE NOT PERMITTED AND INVALIDATE OUR CERTIFICATION.

COPYRIGHT 2004 FRANK L. BENNARDO P.E.

04-WDF-0004

PAGE SCALE:
DESCRIPTION:
WAYNE-DALTON PART #317477

