



A Complete Product Portfolio of Energy Saving Solutions

Luminairz



Energizr



Solarz



Gyezr



Measurz



Zefr

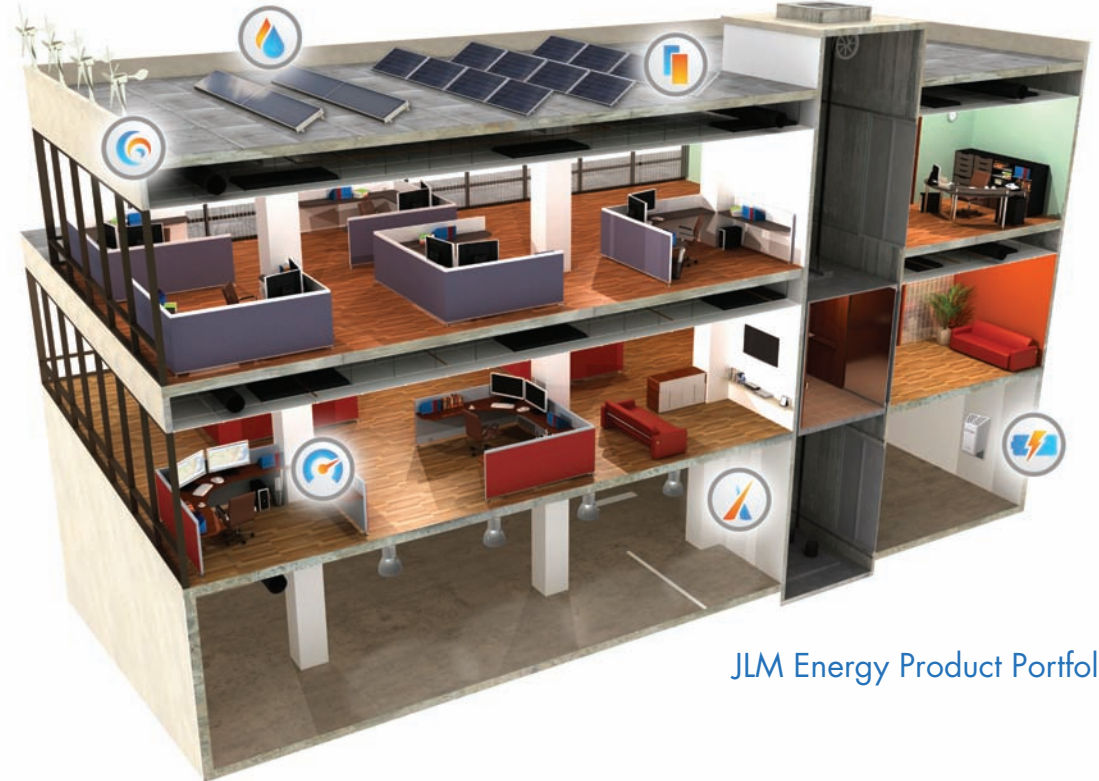


Who We Are:

JLM Energy is an energy technology company. We are a team of engineers, entrepreneurs and customer-facing professionals dedicated to research and development of products aimed at reducing the energy expenditure of our commercial, industrial and residential customers.

What We Do:

JLM Energy, Inc. has developed a portfolio of renewable energy products and solutions with the goal of generating and conserving energy for its customers. Developing ground-breaking technology focused on providing our customers with comprehensive energy products and solutions. We are passionate about renewable energy and offer a full portfolio of innovative commercial grade energy products which, when used in tandem, can create a personal power utility grid.



JLM Energy Product Portfolio

Quotes From Our Dealers:

"We are an independent wind developers that specializes in selling, installing and servicing a wide variety of models and different sized wind turbines across the US and abroad. With the introduction of the Zefr we now have a product that's suitable for both a residential and commercial setting where larger turbines might not be a good fit. This has helped open up additional sales opportunities that we didn't previously have. JLM's portfolio of products and their engineering support has also been a real value add and a differentiator for us as we can now offer solar PV, solar thermal, LED Lighting and renewable energy storage systems which gives us a well-rounded product offering. I can say on behalf of the whole team here at Hydro-Star that we're happy to have joined forces with JLM."

- Curt Besselman, VP of Marketing for Hydro Star Energy

"With the Zefr and Gyezi, our commercial customers can take advantage of excellent, local natural resources with minimal cost."

- Bruce Battaglia, General Manager of Lake Wind Power.



Page 4

Zefr Urban Arrayed Wind Turbines

An innovative wind turbine engineered to operate in an array with breakthrough monitoring technology.



Page 5

Gyezr Commercial Grade Solar Thermal

The first commercial grade solar thermal collector utilizing advanced wireless monitoring technology.



Page 6

Solarz Commercial Grade Hybrid PV

JLM Energy offers complete commercial grade PV solutions that can be seamlessly integrated with other JLM Energy products such as Zefr and Energizr.



Page 7

Energizr Renewable Energy Storage

Energizr brings together three major components of an energy system in a single package: The power utility grid, renewable energy sources (Wind and PV) and energy storage.



Page 8

Luminairz Efficient Enterprise Lighting

Eco-friendly LED lighting solutions designed to reduce energy use for commercial and retail businesses.



Page 9


Measurz Enterprise Energy Management

Intelligent software designed with an easy user interface for continuous energy monitoring.



PRODUCT FEATURES

- Designed to withstand tropical climates
- Zefr is light-weight, architecturally attractive, and has a blade diameter of only 36"
- Low noise and vibration
- Electromagnetic braking and JLM's autofurlz technology allows Zefr to continue generating energy in high winds while protecting its system components
- Easily integrated with Solarz PV panels and Energizr
- Wirelessly monitored in real-time through Measurz
- JLM Energy provides system design and engineering support

 **Zefr**TM Urban Arrayed Wind Turbines

Zefr Wind Turbines are the first wind turbines designed to be installed in an array. The Wind Array Turbine System (WATS) provides the architectural flexibility to capture the energy of the wind in island and tropical environments. Zefr's small, light-weight design results in easy integration into a variety of architectural landscapes, adding both power production and aesthetics to any project.





PRODUCT FEATURES

- Gyezr is SRCC OG -100 certified
- Designed to withstand tropical climates
- The most efficient way to generate hot water from the sun's energy
- Light weight, low profile and architecturally attractive design
- Each channel of Gyezr is monitored by a wireless micro-controller
- Each micro-controller is self powered using energy harvesting technology and wirelessly communicates real-time data to Measurz
- JLM Energy provides system design and engineering support



 **Gyezr**™ Commercial Grade Solar Thermal

Gyezr Solar Thermal Collectors are equipped with JLM's MATS™ technology. JLM Energy has pioneered the Micro-controlled Array Thermal System or MATS™. MATS™ provides the system owner detailed and real-time feedback on the performance and well-being of the system components.



PRODUCT FEATURES

- The best solution for commercial grade PV systems
- Solarz can be seamlessly integrated with Zefr and Energizr
- Monitored in real-time through Measurz
- JLM Energy provides a complete PV package including: PV panels, inverters, racking and cabling
- JLM Energy provides system design and engineering support



 **Solarz**TM Commercial Grade Hybrid PV

Solarz Commercial Grade PV systems are easily integrated with other JLM Energy Products such as Zefr and Energizr. Together these products provide complete hybrid and energy storage solutions that can be monitored under our Measurz platform.



PRODUCT FEATURES

- Designed to operate seamlessly with JLM's Zefr and Solarz products
- Simple, single-button turn-on and turn-off procedures
- Equipped with all measurement capabilities for measurement of AC and DC voltages, current and power levels
- Capable of running in four modes:
 1. Grid-based system with battery backup
 2. Off-grid system with PV and wind
 3. Integrated grid, renewable and battery backup
 4. Provides instantaneous battery backup
- Creates a seamless renewable system to eliminate or minimize dependence on the power utility grid
- Measurz-compatible for seamless installation and monitoring

Energizr™ Renewable Energy Storage

Energizr brings together three major components of an energy system in a single package: the power utility grid, renewable energy sources (Wind and PV) and energy storage. In situations where the grid is available, the renewable resources are used to charge the system batteries and then the excess renewable energy is used for net metering. When the grid is unavailable, Energizr uses the energy stored in the batteries to power local electrical loads and at the same time ensures that PV or wind power generated is used to recharge the batteries.



PRODUCT FEATURES

- JLM Energy offers a wide range of LED lighting solutions
- LED lighting is typically two to three times more efficient than traditional lighting
- Each Luminairz fixture can be equipped with a micro-controller for real-time monitoring
- Zone-specific controls and measurement utilizing Measurz
- Energy Star, UL listed, and DLC certified fixtures available



 **Luminairz**TM Efficient Enterprise Lighting

Luminairz LED lighting products range from large commercial and industrial applications to small residential fixtures. Luminairz is the most energy efficient, reliable and controllable line of LED products available and offers the best, eco-friendly lighting solution for commercial businesses.

PRODUCT FEATURES

- Revolutionary multi-product real-time monitoring
- Track the performance of JLM Energy products under one energy management platform
- Monitor multiple installations through a map-based user friendly interface
- Quickly and efficiently identify any issues that may effect a system's performance
- Ability to log and store integrated system production
- Mobile applications available



 **Measurz**™ Enterprise Energy Management

Designed to interface with all of JLM's energy saving products, Measurz collects and monitors data to help maintain system health and optimize performance. Measurz delivers real-time data over the internet through a cloud based energy management system, giving the customer valuable information on product performance and energy savings.





Thank you for taking time to review the JLM Energy product portfolio.

For more information about our product portfolio please contact the dealer listed below:

www.jlmenergyinc.com



ECO-SMART.COM
Phone (US): 888.329.2705
Phone (Outside US): 941.377.9460
Email: info@ecosmartinc.com