

The Cameron

For more information,
 contact:
 Eco-Smart, Inc.
 (941)376-8484
 info@eco-smart.com

Steel Snap-N-Lock Composite Panel Home Permit/Construction Drawings

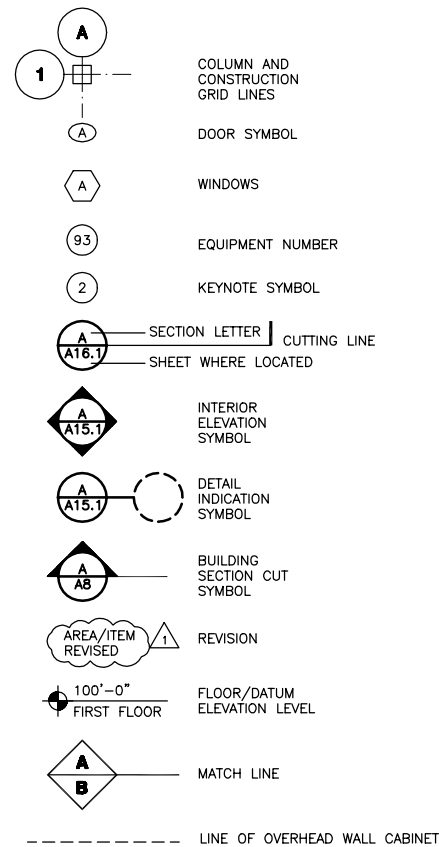
SBS PROJ. # Cameron



ABBREVIATIONS

A.F.F. - ABOVE FINISHED FLOOR
 ALUM. - ALUMINUM
 & - AND
 @ - AT
 BLDG. - BUILDING
 CMU - CONCRETE MASONRY UNIT
 CONC. - CONCRETE
 DBL. - DOUBLE
 EA. - EACH
 ELEC. - ELECTRICAL
 E.P.S. - EXPANDED POLYSTYRENE
 EXT. - EXTERIOR
 F.D. - FLOOR DRAIN
 FT - FEET
 GA. - GAUGE
 GALV. - GALVANIZED
 GWB - GYPSUM WALL BOARD
 H. - HIGH
 HORZ. - HORIZONTAL
 I.D. - INSIDE DIAMETER
 INSUL. - INSULATION
 INT. - INTERIOR
 L - LENGTH, LONG
 LAV. - LAVATORY
 MACH. - MACHINE
 MAX. - MAXIMUM
 MFR. - MANUFACTURER
 MIN. - MINIMUM
 M.P.H. - MILES PER HOUR
 MTL. - METAL
 NEO. - NEOPRENE
 N.I.C. - NOT IN CONTRACT
 O.C. - ON CENTER
 O.D. - OUTSIDE DIAMETER
 OPP. - OPPOSITE
 PLAS. LAM. - PLASTIC LAMINATE
 PLYWD. - PLYWOOD
 P.S.F. - POUNDS PER SQUARE FOOT
 P.S.I. - POUNDS PER SQUARE INCH
 P.T. - PRESSURE TREATED
 REINF. - REINFORCING
 R.O. - ROUGH OPENING
 RUN. - RUNNER
 SHT. - SHEET
 SHTNG. - SHEATHING
 SIM - SIMILAR
 S-N-L - SNAP-N-LOCK
 S.M.S. - SHEET METAL SCREW
 SPECS - SPECIFICATIONS
 S.S. - STAINLESS STEEL
 STL. - STEEL
 T&G - TONGUE AND GROOVE
 TYP - TYPICAL
 U.O.N. - UNLESS OTHERWISE NOTED
 VERT. - VERTICAL
 W - WIDE
 W/ - WITH
 W.C. - WATER CLOSET
 WD. - WOOD
 W.H. - WATER HEATER
 W/O - WITHOUT
 W.W.F. - WELDED WIRE FABRIC

SYMBOLS LEGEND



PARTITION LEGEND

26ga. STEEL SNAP-N-LOCK COMPOSITE PANEL WALL (BY STRUCTALL)
 26ga. STEEL SNAP-N-LOCK COMPOSITE PANEL WALL (BY STRUCTALL) W/ FURRING & 1/2" GWB
 LOAD BEARING WALL - 18ga. STUDS @ 24" O.C. W/ 1/2" GWB
 PARTITION - 20ga. STUDS @ 16" O.C. W

DESIGN CRITERIA

CODE EDITION: 2001 FLORIDA BUILDING CODE & ASCE 7-98
 BUILDING HEIGHT: (X) <30' () >30'
 MEAN ROOF HEIGHT: 12'-0"
 BASIC WIND VELOCITY: 120 MPH
 EXPOSURE CATAGORY: B
 IMPORTANCE FACTOR: 1.0
 INTERNAL PRESSURE: (X) .55 PARTIALLY ENCLOSED
 COEFFICIENT () .18 ENCLOSED
 IMPACT PROTECTION REQUIRED: () YES (X) NO
 OPENING DESIGN PRESSURES: OPENING SCHEDULE SHT. A3
 REVIEWED FOR SHEAR WALL REQ.: (X) YES () NO
 MINIMUM ROOF LIVE LOAD: 20 PSF
 ROOF DEAD LOAD: 2 PSF
 FLOOR LIVE LOAD: 40 PSF
 MINIMUM SOIL BEARING CAPACITY: 2000 PSF
 OCCUPANCY CLASSIFICATION: RESIDENTIAL - R3
 CONSTRUCTION TYPE: TYPE V, UNPROTECTED

COMPONENTS & CLADDING

LOCATION	ZONE	EFFECTIVE AREA	DESIGN PRESSURE (PSF)
ROOF	1	100	+16 -32
	2	50	+17 -41
	3	10	+19 -52
WALL	4	100	+30 -32
	5	100	+30 -35

GENERAL NOTES

IT IS THE RESPONSIBILITY OF THE GENERAL CONTRACTOR AND EACH OF HIS SUBCONTRACTORS TO REVIEW ALL DRAWINGS, REVISIONS TO DRAWINGS, ETC. TO ASSURE COORDINATION OF ALL WORK AFFECTING EACH TRADE. FAILURE TO REVIEW ALL CONTRACT DOCUMENTS FOR APPLICABLE ITEMS OF WORK SHALL NOT RELIEVE THE RESPONSIBLE PARTY FROM PERFORMING ALL WORK REQUIRED.

- STRUCTURAL DESIGN AS SHOWN IN THESE DRAWINGS MEETS CURRENT FLORIDA BUILDING CODE & INTERNATIONAL RESIDENTIAL CODE REQUIREMENTS FOR 120 M.P.H. WIND LOAD, EXP. B.
- ALL TRADES MUST CONFORM TO CURRENT EXISTING CODES AND ORDINANCES APPLICABLE TO THIS PROJECT.
- CONTRACTORS TO VERIFY ALL DIMENSIONS AND CONDITIONS.
- ALL MATERIAL TO BE INSTALLED PER MANUFACTURERS SPECIFICATIONS.
- ELECTRICAL PER LICENSED CONTRACTOR TO LOCAL AND NATIONAL STANDARDS.
- CONTRACTOR IS RESPONSIBLE FOR THE PROPER WATERPROOFING, FLASHING & SEALING OF THE ROOF AND STRUCTURE, EXISTING & NEW, IN AND BEYOND THE SCOPE OF THESE DRAWINGS.

COMPOSITE PANEL USE NOTES

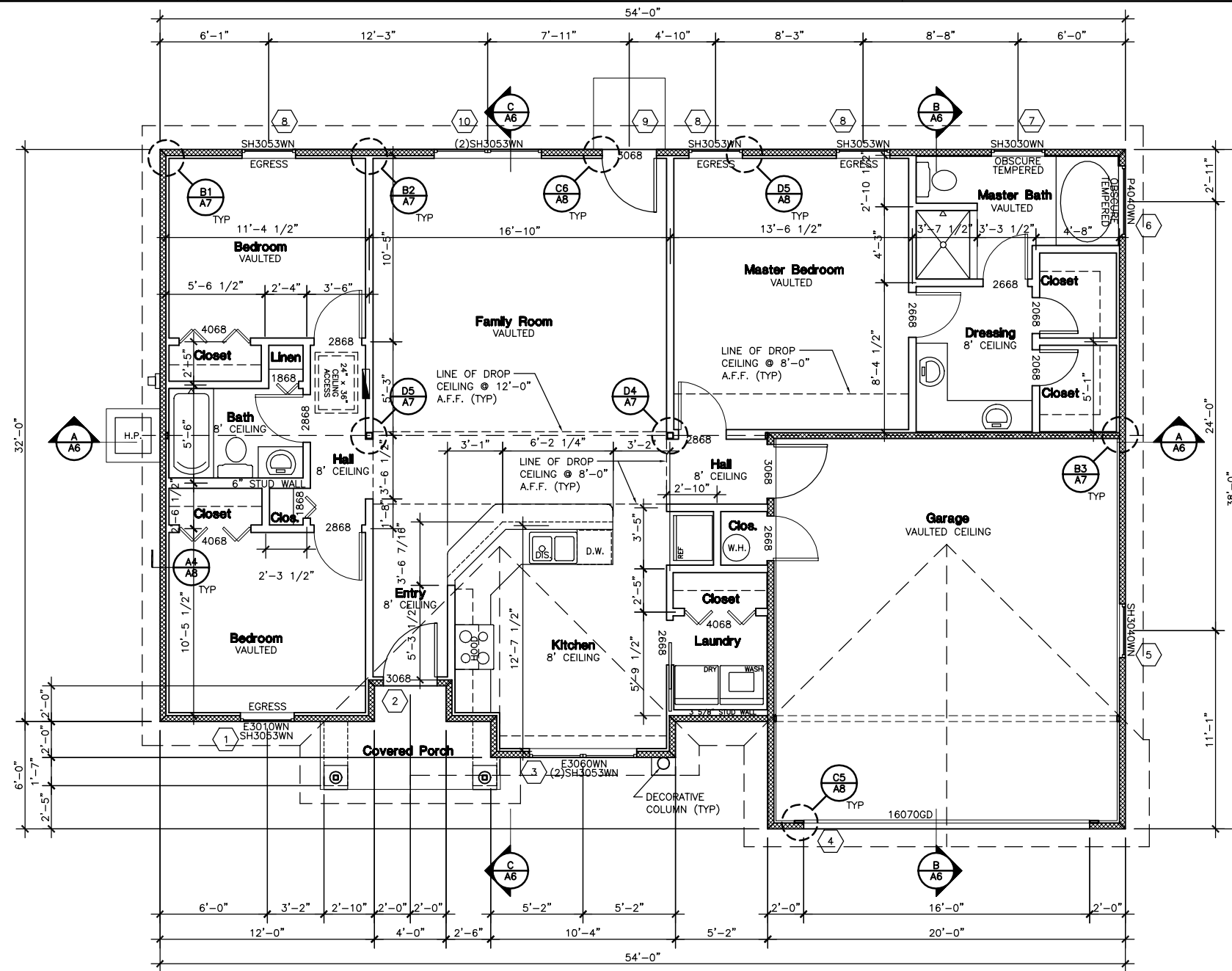
- THIS SET OF PLANS HAS BEEN SPECIFICALLY DESIGNED & ENGINEERED FOR ONLY SNAP-N-LOCK COMPOSITE PANELS BY STRUCTALL BUILDING SYSTEMS.
 - SNAP-N-LOCK COMPOSITE PANELS ARE A TRADE MARKED, COPYRIGHTED & PATENTED PRODUCT W/ SPECIFIC STRUCTURAL & QUALITY CHARACTERISTICS.
 - THESE PLANS PERMIT NO EQUALS AND/OR SUBSTITUTIONS OF SNAP-N-LOCK COMPOSITE PANELS.

INDEX OF DRAWINGS

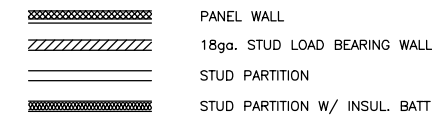
ARCHITECTURAL:
 A1 GENERAL NOTES, LEGENDS, DESIGN CRITERIA & DRAWING INDEX
 A2 FLOOR PLAN
 A3 ELEVATIONS - FINISHES
 A4 ELEVATIONS - PANELS
 A5 ROOF FRAMING PLAN & ROOF PANEL PLAN
 A6 FOUNDATION PLAN & DETAILS
 A7 DETAILS & SPAN CHARTS
 A8 CROSS SECTIONS & DETAILS
 A9 MECHANICAL/PLUMBING PLAN, SANITARY RISER DIAGRAM & ELECTRICAL PLAN

The Cameron
 Steel Snap-N-Lock Panel House
 1909 SF, 1 Story, 3 Bedrm, 2 Bath, 2 Car Garage
 Standard Model

Project No.
 Date: 03-14-03
 Drawn: JRD
 Revised:



DIMENSION NOTES:
 1. INTERIOR DIMENSIONS ARE TAKEN FROM THE INSIDE FACE OF PANEL WALL TO THE CENTER OF PARTITION WALL.
 2. DIMENSIONS LISTED AS "CLEAR" INDICATE MINIMUM ALLOWABLE FINISHED DIMENSIONS.



Living	1426 sq. ft.
Garage	437 sq. ft.
Porch	46 sq. ft.
Total	1909 sq. ft.

OPENING SCHEDULE

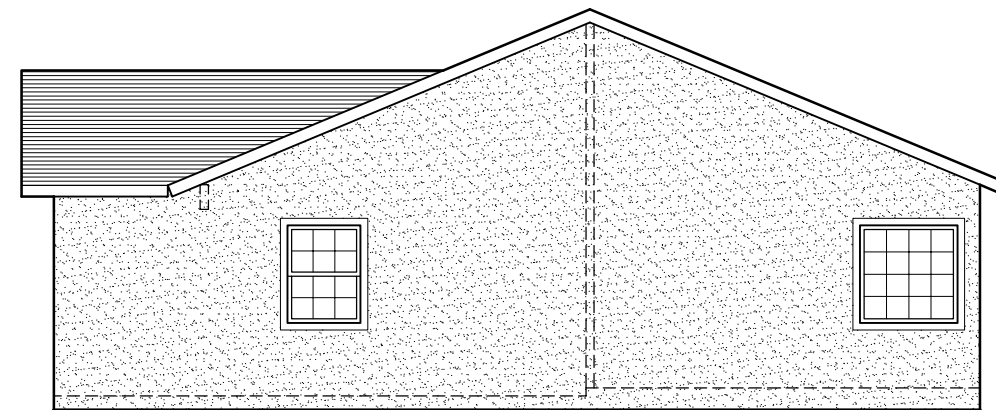
ID TAG	TYPE	MATERIAL	SIZE	ROUGH OPENING	STYLE	GLAZING	MFG'R	SERIES	MODEL No.	MANF. DESIGN PRESSURE	STRUCT. DESIGN PRESSURE (PSF)	NOTES
1	COMBIN. WINDOW	VINYL	3010	36" x 75"	EYEBROW	DBL. PANE LOW E	SIMONTON	CONTRACTOR	--	+40.0 -40.0	+32.9 -35.1	FACTORY MULLED
			3053									
2	DOOR	FIBERGLASS INSULATED	3080	37" x 81"	FAN LIGHT	SINGLE PANE	THERMA-TRU	SMOOTHSTAR	S255	+67.0 -67.0	+32.8 -35.0	RHIS
3	COMBIN. DBL. WINDOW	VINYL	3010	72" x 75"	EYEBROW	DBL. PANE LOW E	SIMONTON	CONTRACTOR	--	+35.0 -35.0	+31.8 -34.0	FACTORY MULLED
			(2)3053									
4	CARAGE DOOR	STEEL INSULATED	16070	192" x 84"	EMBOSSED PANEL	NONE	CLOPAY	--	73	+30.0 -30.0	+29.9 -32.1	
5	WINDOW	VINYL	3040	36" x 48"	SINGLE HUNG	DBL. PANE LOW E	SIMONTON	CONTRACTOR	--	+40.0 -40.0	+33.7 -35.9	
6	WINDOW	VINYL	4040	48" x 48"	PICTURE	DBL. PANE LOW E	SIMONTON	CONTRACTOR	--	+40.0 -40.0	+33.2 -35.4	OBSCURE & TEMPERED
7	WINDOW	VINYL	3030	36" x 36"	SINGLE HUNG	DBL. PANE LOW E	SIMONTON	CONTRACTOR	--	+40.0 -40.0	+34.0 -36.2	OBSCURE & TEMPERED
8	WINDOW	VINYL	3053	36" x 63"	SINGLE HUNG	DBL. PANE LOW E	SIMONTON	CONTRACTOR	--	+40.0 -40.0	+33.2 -35.4	PROVIDE CLEARANCE HOWR.
9	DOOR	FIBERGLASS INSULATED	3080	37" x 81"	HALF GLASS	SINGLE PANE	THERMA-TRU	SMOOTHSTAR	S262 LE	+67.0 -67.0	+32.8 -35.0	LHIS
10	DBL. WINDOW	VINYL	(2)3053	72" x 63"	SINGLE HUNG	DBL. PANE LOW E	SIMONTON	CONTRACTOR	--	+40.0 -40.0	+32.1 -34.3	FACTORY MULLED

The Cameron
Steel Snap-N-Lock Panel House
 1909 SF, 1 Story, 3 Bedrm, 2 Bath, 2 Car Garage
 Standard Model

Project No.
 Date: 03-14-03
 Drawn: JRD
 Revised:

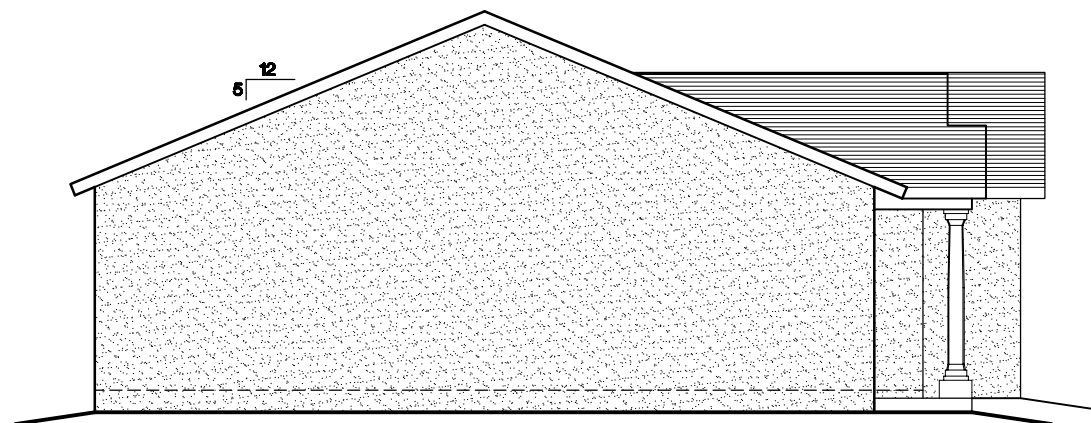


Front Elevation
1/4" = 1'-0"

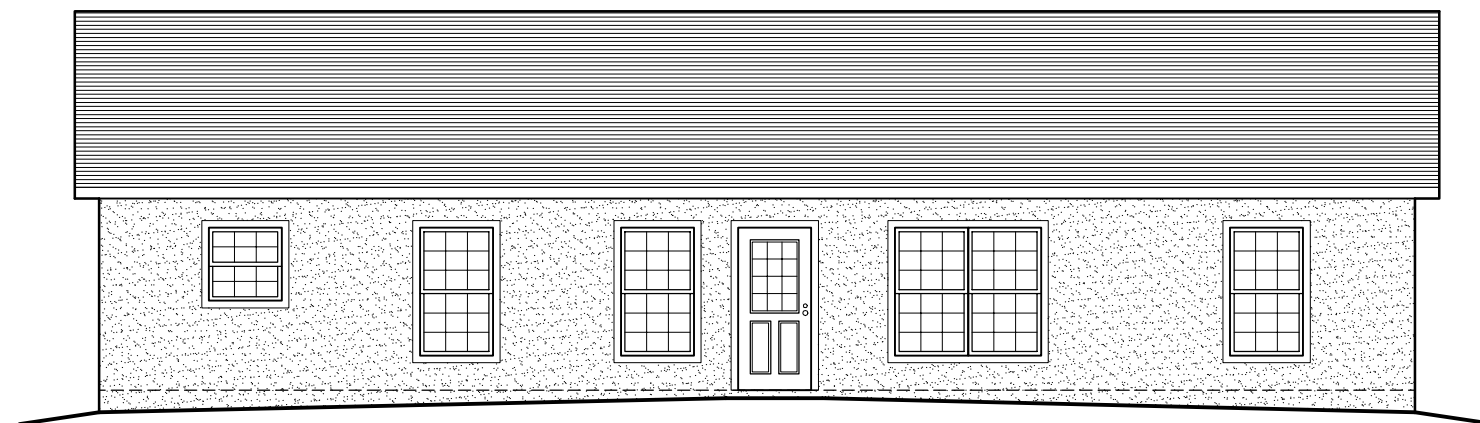


Right Elevation
1/4" = 1'-0"

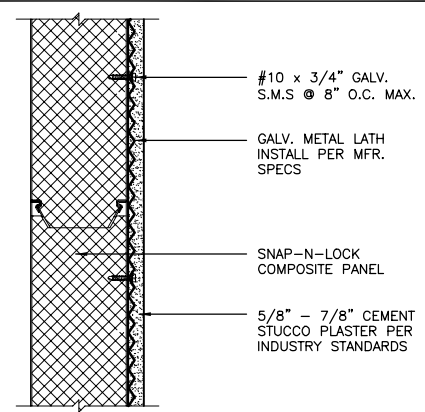
NOTES:
1. FINISHES ARE FOR COSMETIC PURPOSES ONLY. PANEL SHELL IS WEATHER PROOF.



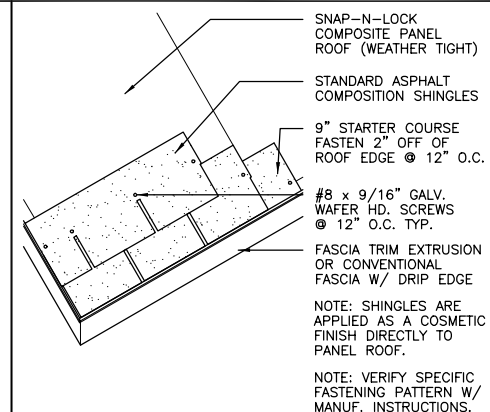
Left Elevation
1/4" = 1'-0"



Back Elevation
1/4" = 1'-0"



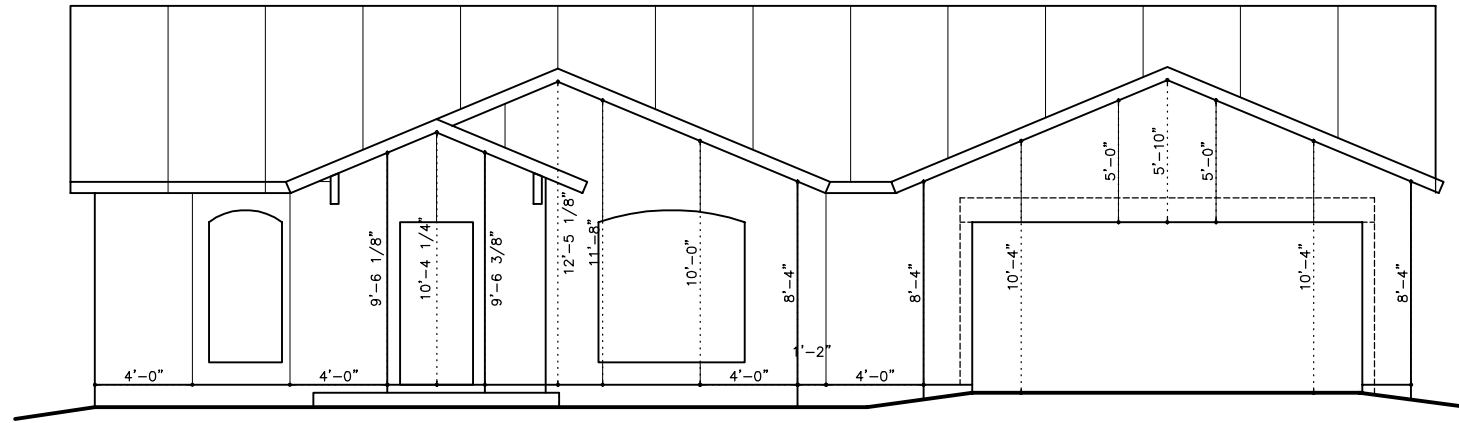
CEMENT STUCCO TO PANEL WALL
1 1/2" = 1'-0" FINWAL02



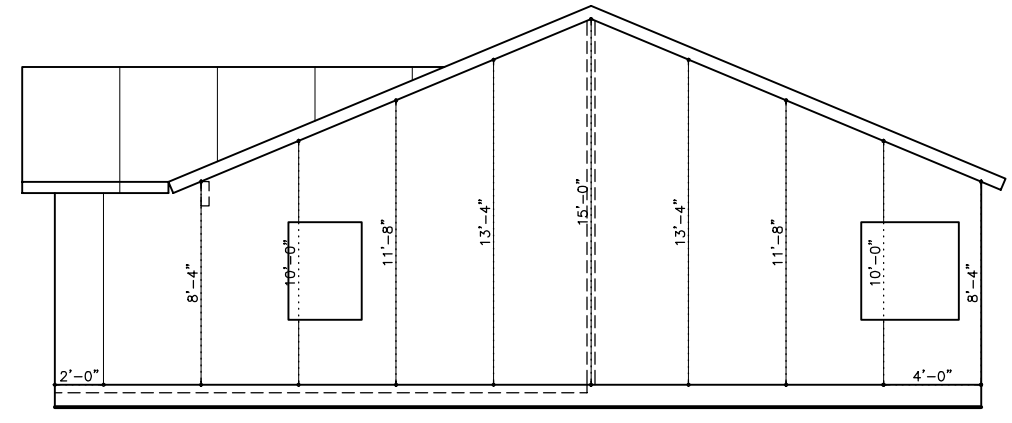
PANEL ROOF FINISH - ASPHALT SHINGLES
3/8" = 1'-0" FINROF01

The Cameron
Steel Snap-N-Lock Panel House
1909 SF. 1 Story, 3 Bedrm, 2 Bath, 2 Car Garage
Standard Model

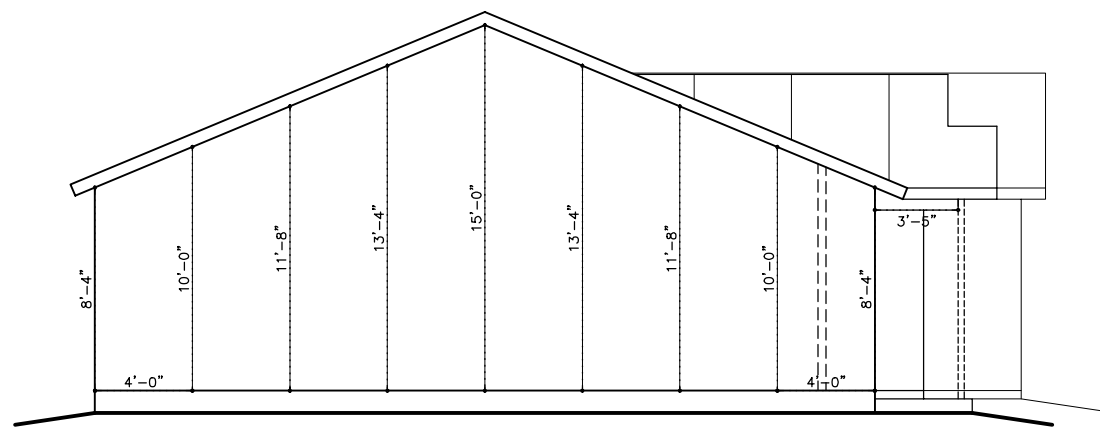
Project No.
Date: 03-14-03
Drawn: JRD
Revised:



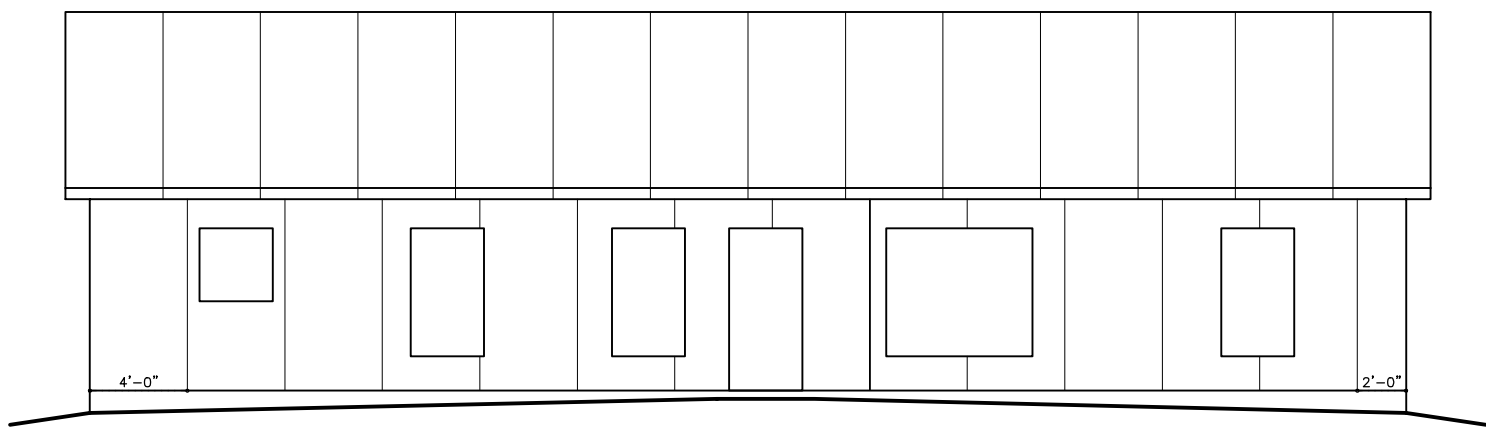
Front Panel Elevation
1/4" = 1'-0"



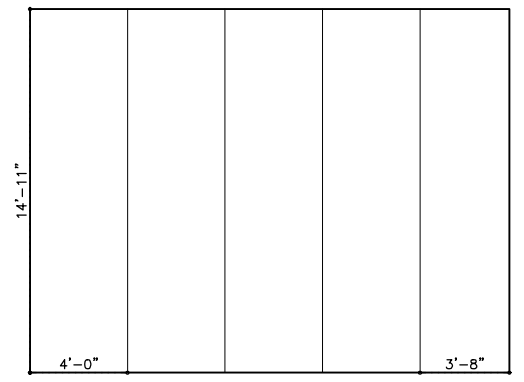
Right Panel Elevation
1/4" = 1'-0"



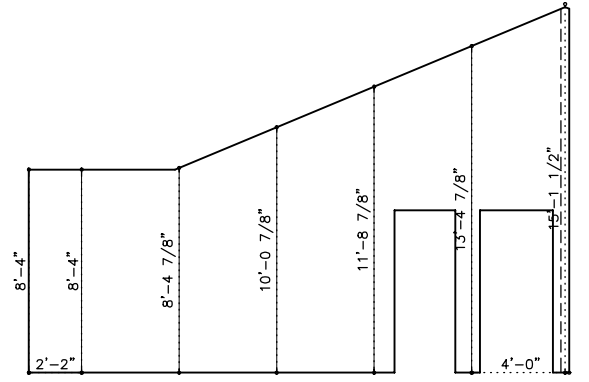
Left Panel Elevation
1/4" = 1'-0"



Back Panel Elevation
1/4" = 1'-0"



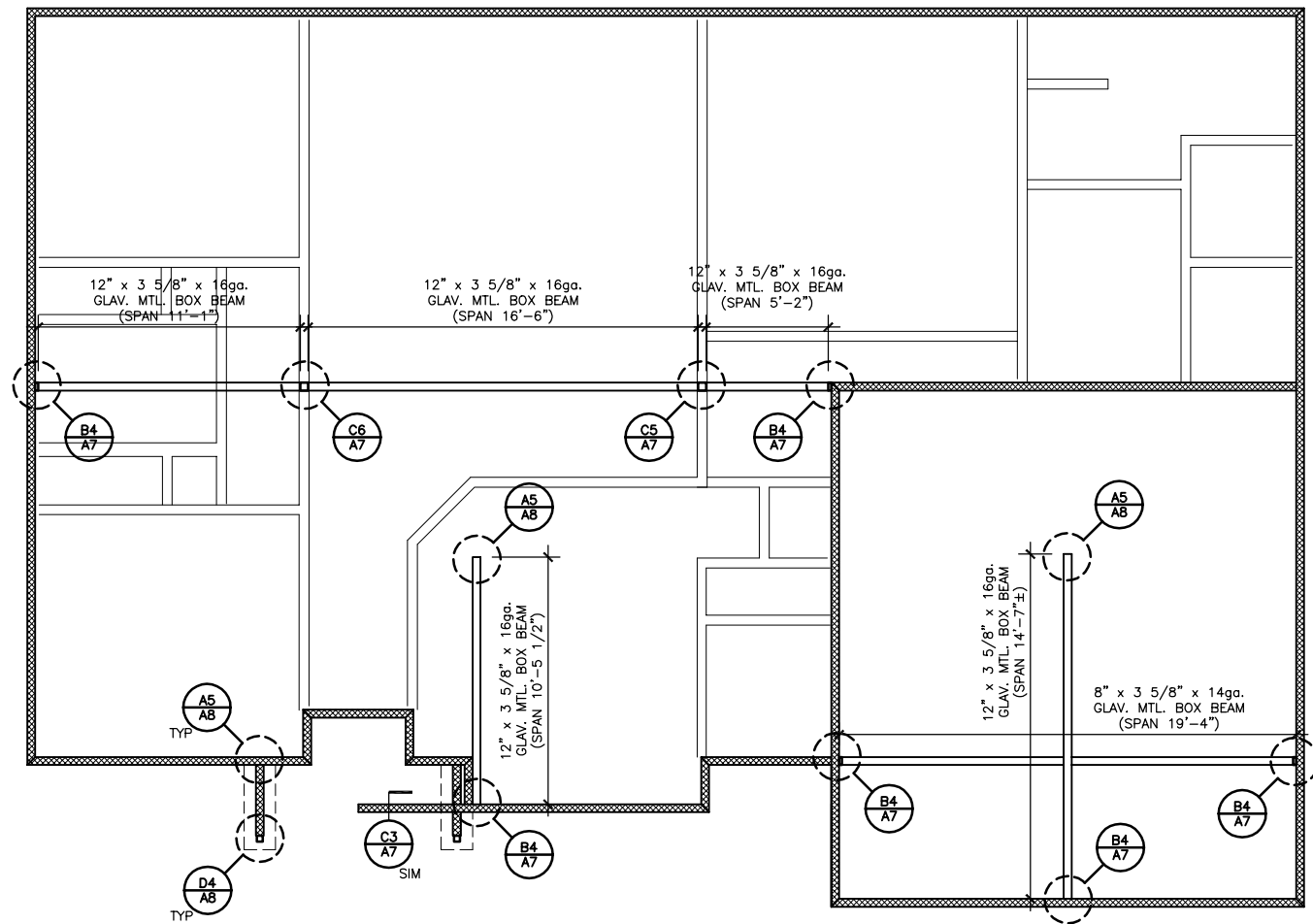
Back Garage Wall Panel Elevation
1/4" = 1'-0"



Left Garage Wall Panel Elevation
1/4" = 1'-0"

The Cameron
Steel Snap-N-Lock Panel House
1909 SF. 1 Story, 3 Bedrm, 2 Bath, 2 Car Garage
Standard Model

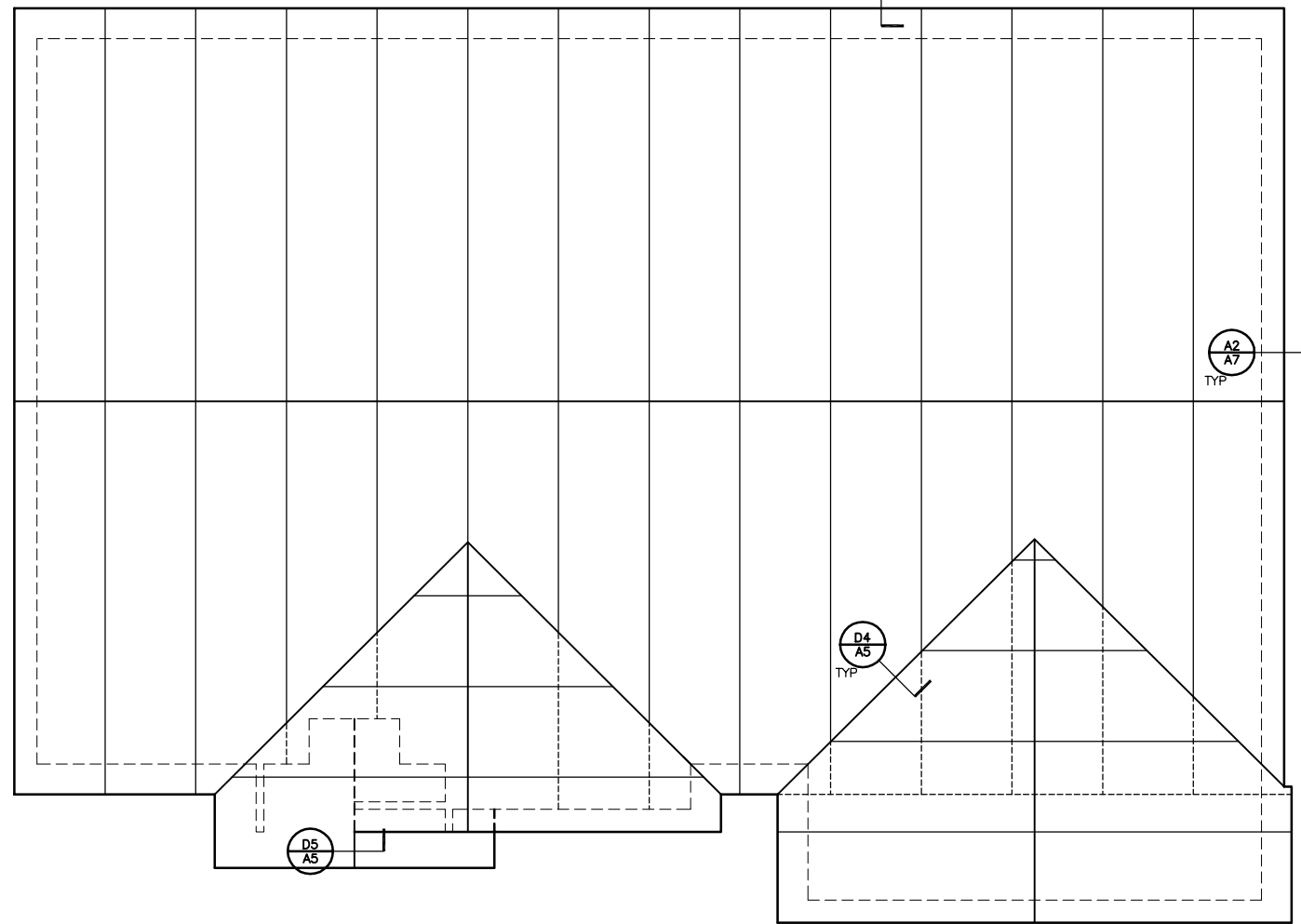
Project No.
Date: 03-14-03
Drawn: JRD
Revised:



NOTE:
WALL & ROOF PANELS
ARE LOAD BEARING &
FUNCTION AS SHEAR
DIAPHRAGMS

Roof Framing Plan

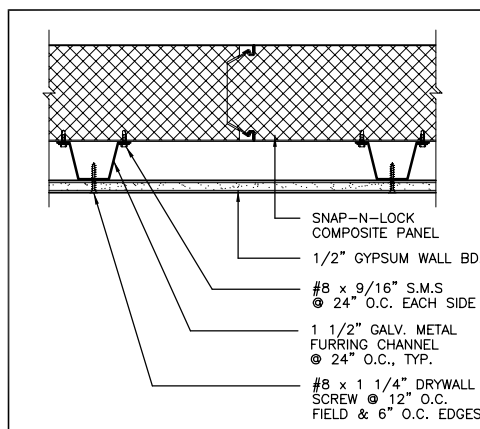
1/4" = 1'-0"



NOTE:
WALL & ROOF PANELS
ARE LOAD BEARING &
FUNCTION AS SHEAR
DIAPHRAGMS

Roof Panel Plan

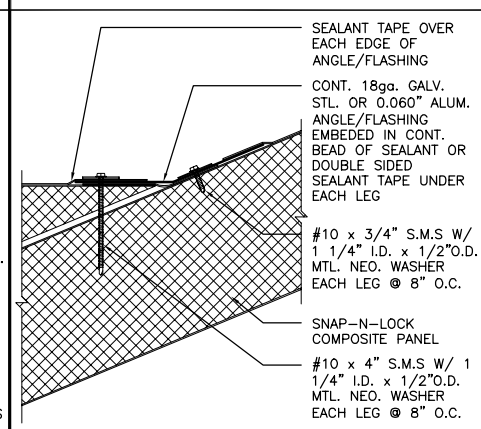
1/4" = 1'-0"



METAL FURRING CHANNELS TO PANEL ROOF

D3 1 1/2" = 1'-0"

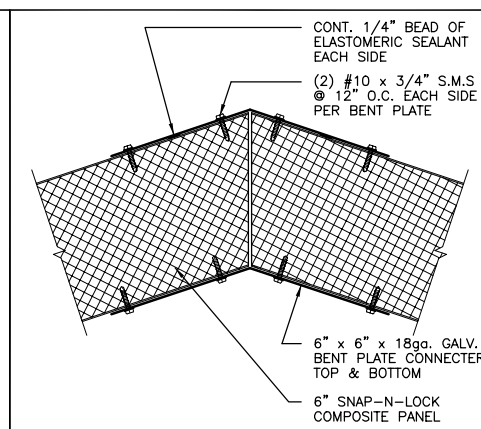
FIN05



PANEL ROOF TO PANEL ROOF

D4 1 1/2" = 1'-0"

ROOF41



PANEL ROOF TO PANEL ROOF

D5 1 1/2" = 1'-0"

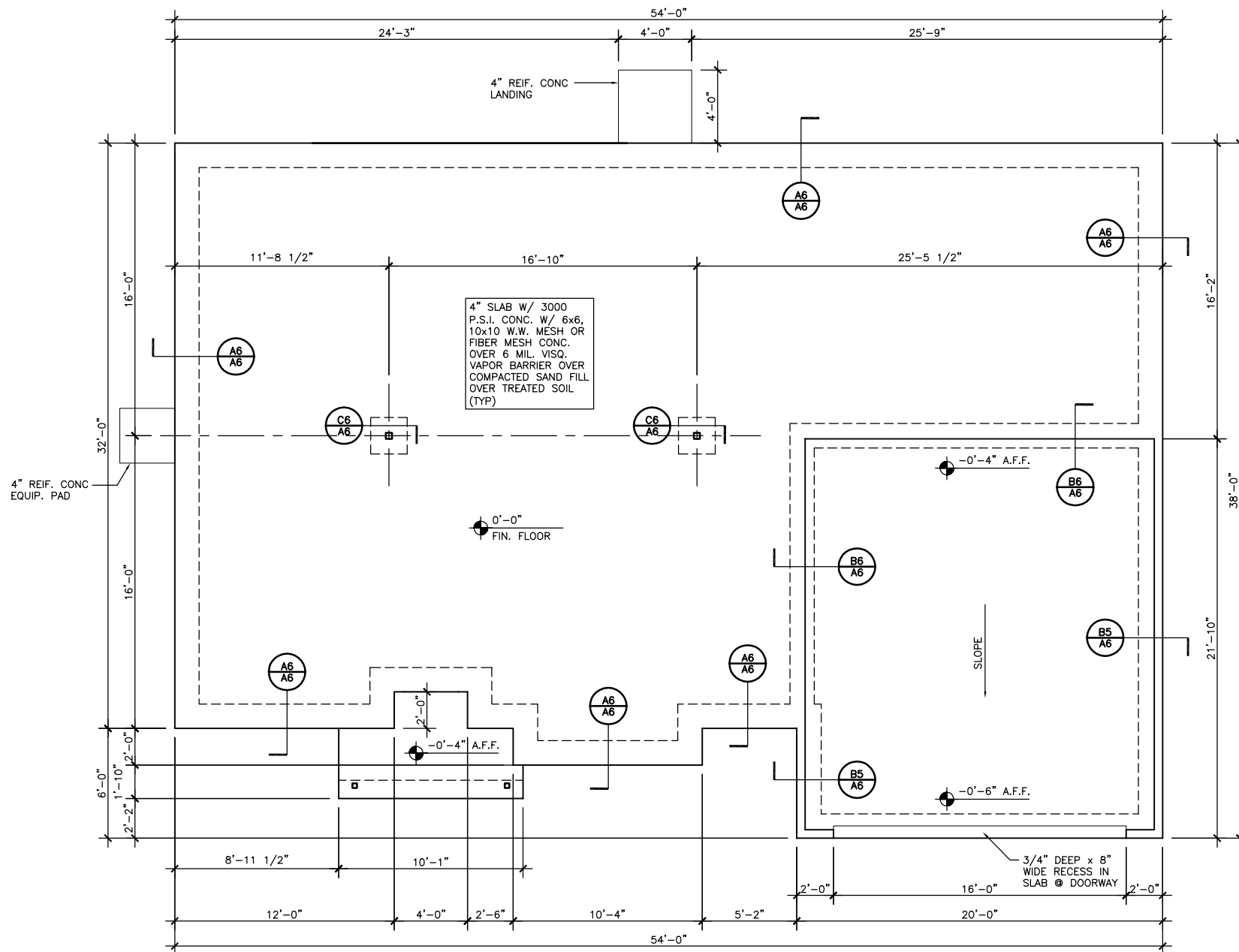
ROOF48

The Cameron
Steel Snap-N-Lock Panel House
1909 SF. 1 Story, 3 Bedrm, 2 Bath, 2 Car Garage
Standard Model

Project No.
Date: 03-14-03
Drawn: JRD
Revised:

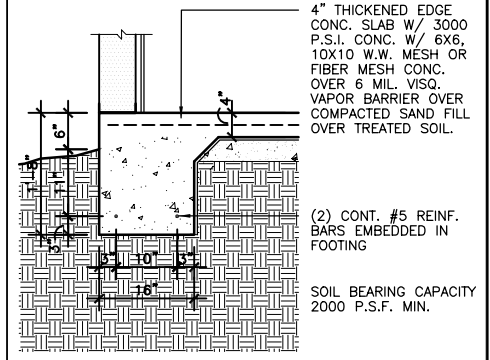
© 2003 S.B.S., INC.

A5

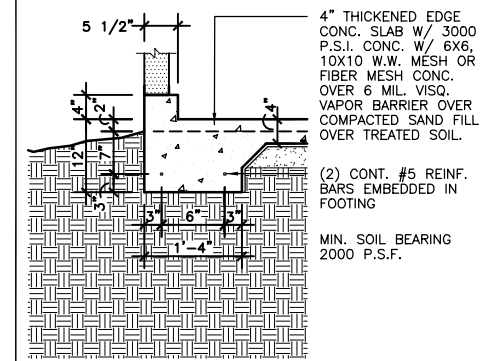


FOUNDATION NOTES

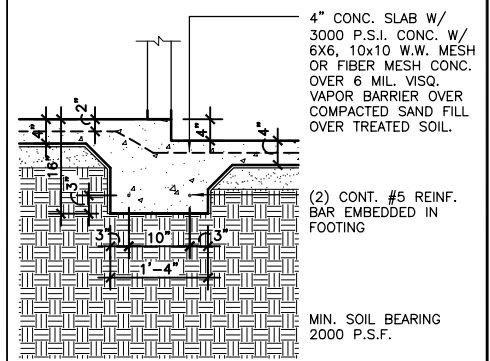
1. ALL SAND FILL SHALL BE CLEAN & COMPACTED TO 98% STANDARD PROCTOR MAXIMUM DRY DENSITY
2. ALL REINFORCING SHALL BE CONTINUOUS W/ 18" MINIMUM LAPS AND TIED SECURELY
3. ALL CONCRETE TO BE PLACED & CURED IN ACCORDANCE WITH THE LATEST ACI SPECIFICATIONS
4. CONTRACTOR TO VERIFY SOIL BEARING CAPACITY IS IN ACCORDANCE WITH THESE DRAWINGS.



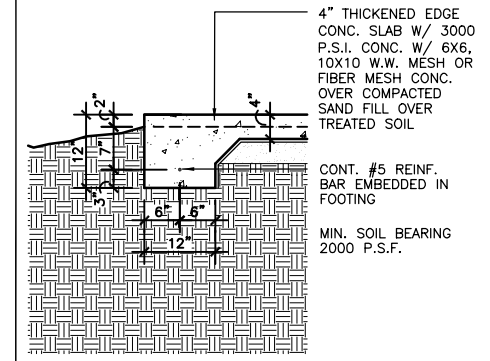
A6 FOOTING @ SLAB EDGE
3/8" = 1'-0" SLAB20



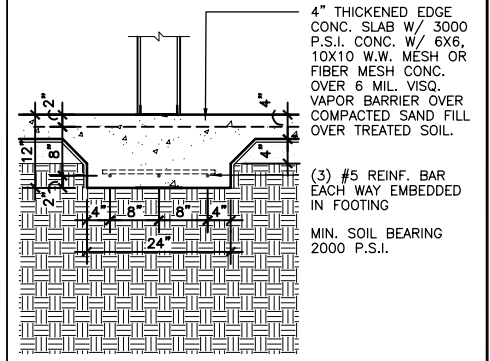
B5 FOOTING @ SLAB EDGE w/ CURB @ GARAGE WALL
3/8" = 1'-0" SLAB49



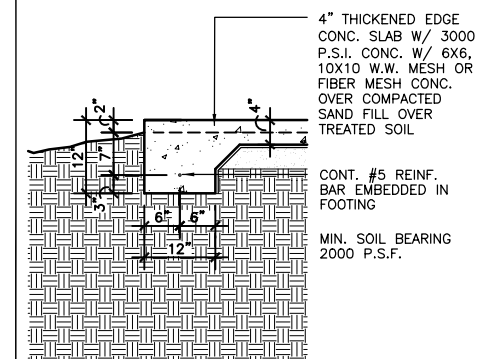
B6 FOOTING @ SLAB LEVEL CHANGE
1 1/2" = 1'-0" SLAB60



C5 FOOTING @ SLAB EDGE
3/8" = 1'-0" SLAB05



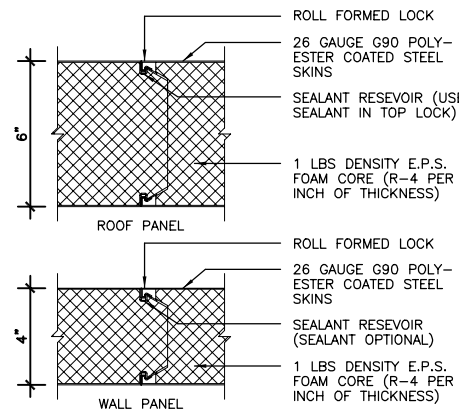
C6 FOOTING @ COLUMN
3/8" = 1'-0" SLAB07



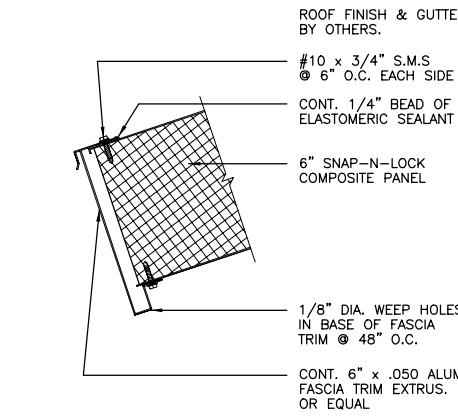
D5 FOOTING @ SLAB EDGE
3/8" = 1'-0" SLAB05

The Cameron
Steel Snap-N-Lock Panel House
1909 SF. 1 Story, 3 Bedrm, 2 Bath, 2 Car Garage
Standard Model

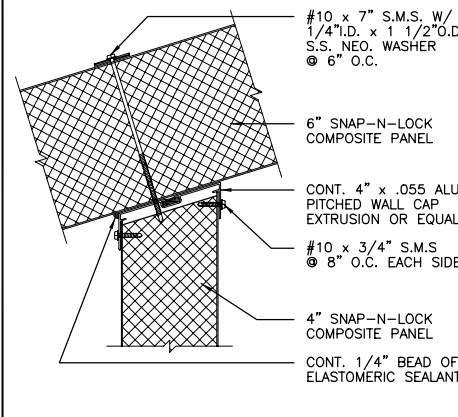
Project No.
Date: 03-14-03
Drawn: JRD
Revised:



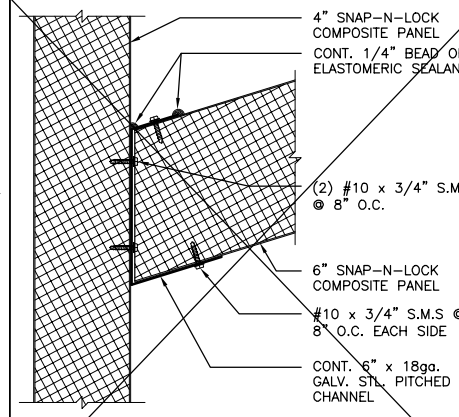
A1 PANEL TYPES
4" & 6" STL. SNAP-N-LOCK
1 1/2" = 1'-0" PANELS02



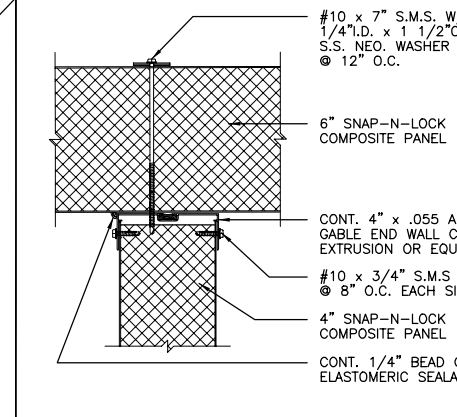
A2 PANEL ROOF FASCIA
1 1/2" = 1'-0" ROOF02



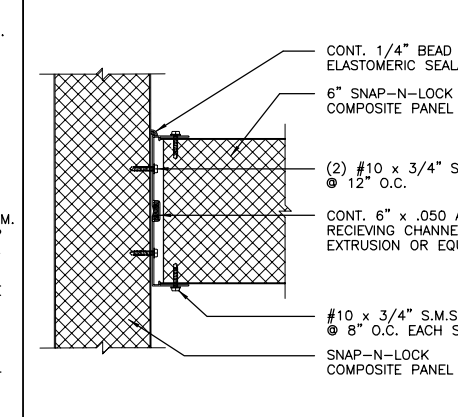
A3 PANEL WALL TO PANEL ROOF
1 1/2" = 1'-0" WALROF09



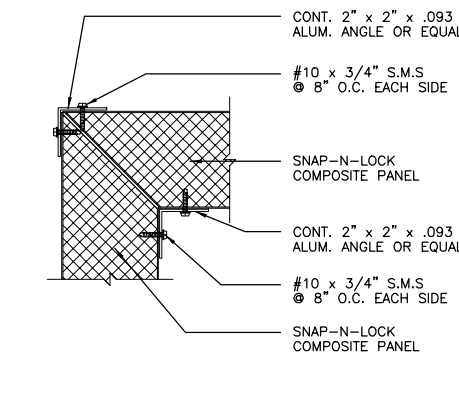
A4 PANEL ROOF TO PANEL WALL
1 1/2" = 1'-0" WALROF90



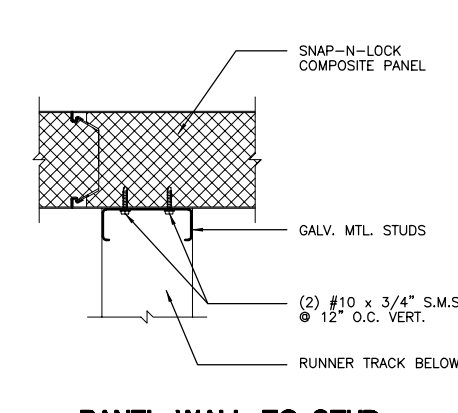
A5 PANEL WALL TO PANEL ROOF (GABLE END)
1 1/2" = 1'-0" WALROF10



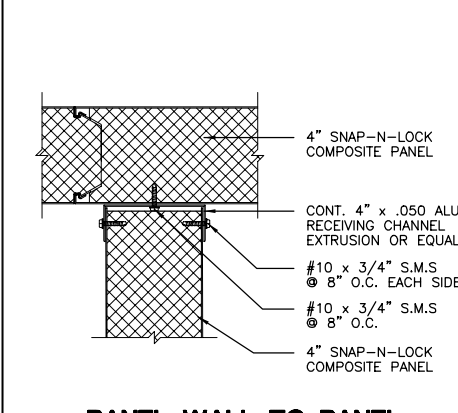
A6 PANEL WALL TO PANEL ROOF (GABLE END)
1 1/2" = 1'-0" WALROF42



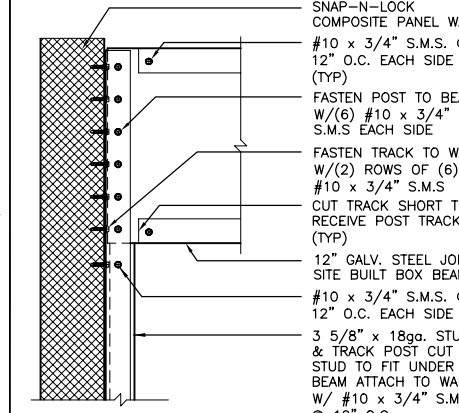
B1 PANEL WALL CORNER (PLAN)
1 1/2" = 1'-0" WALL01



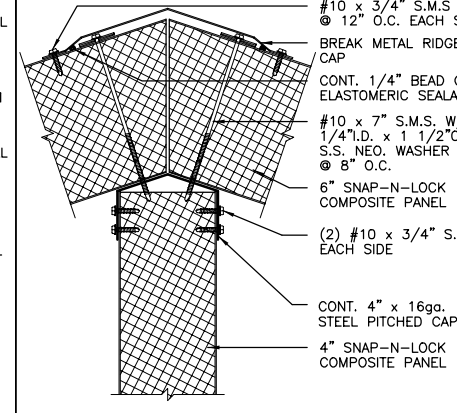
B2 PANEL WALL TO STUD WALL (PLAN)
1 1/2" = 1'-0" WALL02



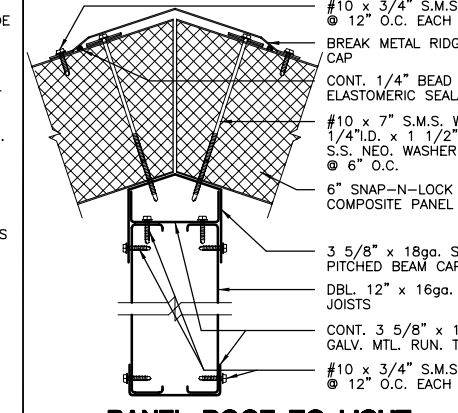
B3 PANEL WALL TO PANEL WALL (PLAN)
1 1/2" = 1'-0" WALL46



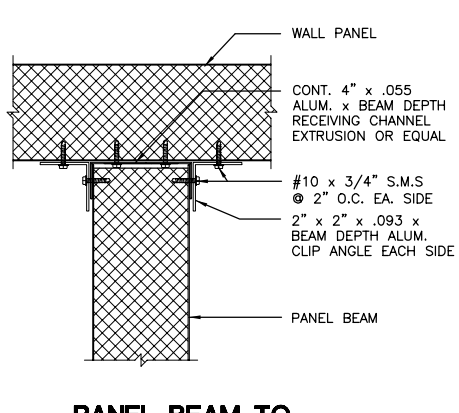
B4 BEAM TO WALL
1" = 1'-0" WALBM13



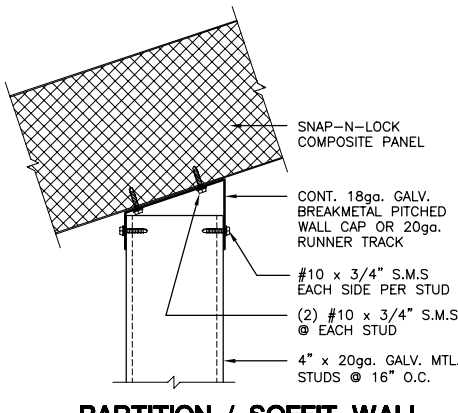
B5 PANEL ROOF TO WALL
1 1/2" = 1'-0" WALROF122



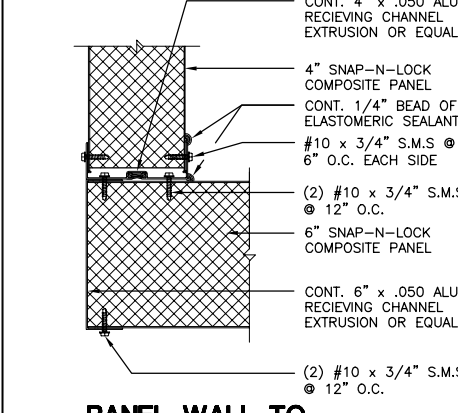
B6 PANEL ROOF TO LIGHT GAUGE STL. RIDGE BEAM
1 1/2" = 1'-0" ROOFBM55



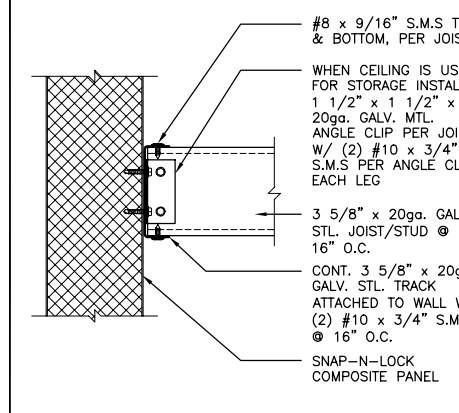
C1 PANEL BEAM TO PANEL WALL
1 1/2" = 1'-0" WALBM18



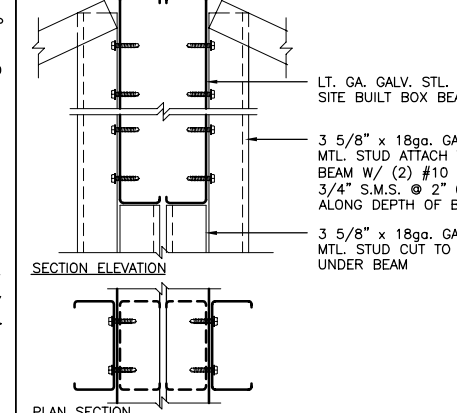
C2 PARTITION / SOFFIT WALL TO PANEL ROOF
1 1/2" = 1'-0" WALROF95



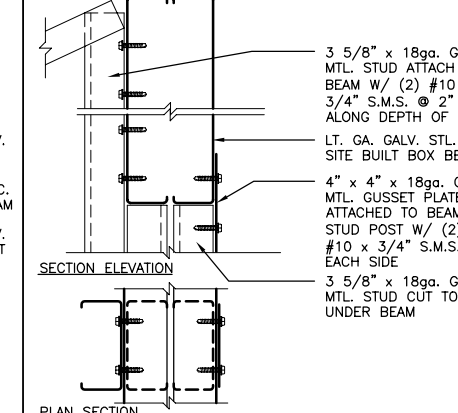
C3 PANEL WALL TO PANEL ROOF
1 1/2" = 1'-0" WALROF98



C4 CEILING @ PANEL WALL
1 1/2" = 1'-0" CEILING03



C5 POST TO BEAM
1 1/2" = 1'-0" PSTBM29

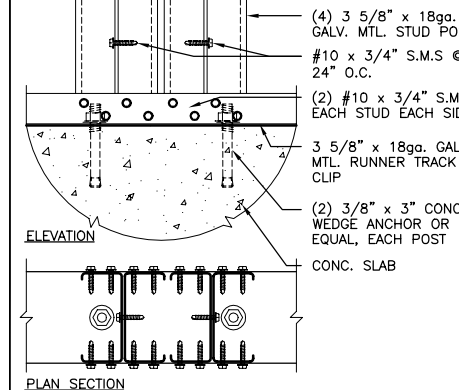


C6 POST TO BEAM
1 1/2" = 1'-0" PSTBM33

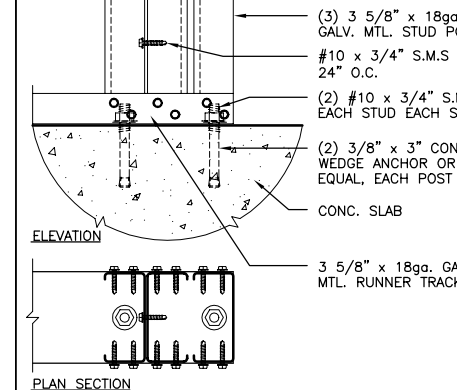
Notes:
Charts show Maximum Clear Spans for Snap-N-Lock Composite Panels using 1 lb./cu. ft. E.P.S. Foam used in "Partially Enclosed" Structures.
Overhang improves panel span, 4 ft. maximum or as listed.
The Thermal Resistance Value of a panel is R-4 per inch of thickness. eg. a 3" panel has a value of R-12.
Spans listed are for wall or roof application.
Spans listed are for Exposure B.
For Maximum Panel Clear Spans for Exposure C, reduce values listed by multiplying by 0.85.
Maximum panel length is 32'-0"

Panel Thk.	Wind Speed - 100 m.p.h.				Wind Speed - 110 m.p.h.				Wind Speed - 120 m.p.h.				DL + LL @ 22 lbs. / sq. ft.						
	0 FT.	1 FT.	2 FT.	4 FT.	0 FT.	1 FT.	2 FT.	4 FT.	0 FT.	1 FT.	2 FT.	4 FT.	0 FT.	1 FT.	2 FT.	4 FT.			
3"	16'-6"	18'-8"	17'-0"	17'-3"	18'-4"	14'-11"	15'-11"	15'-8"	16'-2"	16'-11"	13'-7"	13'-9"	14'-2"	-	-	16'-11"	17'-0"	17'-4"	17'-11"
4"	18'-2"	18'-5"	18'-7"	18'-7"	18'-10"	16'-8"	16'-7"	16'-11"	17'-8"	18'-4"	14'-11"	15'-11"	15'-8"	16'-1"	-	16'-7"	16'-8"	16'-9"	20'-3"
6"	22'-8"	22'-8"	23'-0"	23'-8"	24'-11"	20'-7"	20'-8"	20'-11"	21'-8"	22'-11"	18'-8"	18'-9"	19'-7"	20'-4"	23'-2"	23'-8"	23'-11"	24'-8"	-
8"	25'-11"	25'-11"	26'-4"	26'-8"	27'-2"	23'-7"	23'-8"	23'-11"	24'-4"	24'-11"	21'-8"	21'-8"	21'-8"	22'-2"	22'-10"	26'-8"	26'-11"	27'-3"	27'-8"
Panel Thk.	Wind Speed - 130 m.p.h.				Wind Speed - 140 m.p.h.				Wind Speed - 150 m.p.h.				DL + LL @ 32 lbs. / sq. ft.						
	0 FT.	1 FT.	2 FT.	4 FT.	0 FT.	1 FT.	2 FT.	4 FT.	0 FT.	1 FT.	2 FT.	4 FT.	0 FT.	1 FT.	2 FT.	4 FT.			
3"	12'-8"	12'-10"	13'-4"	-	11'-8"	11'-10"	12'-4"	-	10'-11"	11'-2"	-	-	14'-0"	14'-2"	14'-7"	-	-	-	-
4"	13'-11"	14'-1"	14'-8"	-	12'-10"	13'-0"	13'-8"	-	12'-11"	12'-3"	12'-8"	-	15'-3"	15'-8"	15'-11"	16'-8"	-	-	-
6"	17'-5"	17'-8"	17'-10"	18'-5"	16'-0"	16'-2"	16'-8"	17'-2"	15'-1"	15'-3"	15'-7"	-	18'-3"	18'-4"	18'-8"	20'-2"	20'-10"	-	-
8"	19'-11"	20'-1"	20'-4"	20'-10"	18'-5"	18'-6"	18'-10"	19'-4"	17'-3"	17'-5"	17'-9"	-	22'-0"	22'-2"	22'-5"	22'-10"	23'-5"	-	-

D1 Panel Span Chart
N.T.S. PESPANSTL



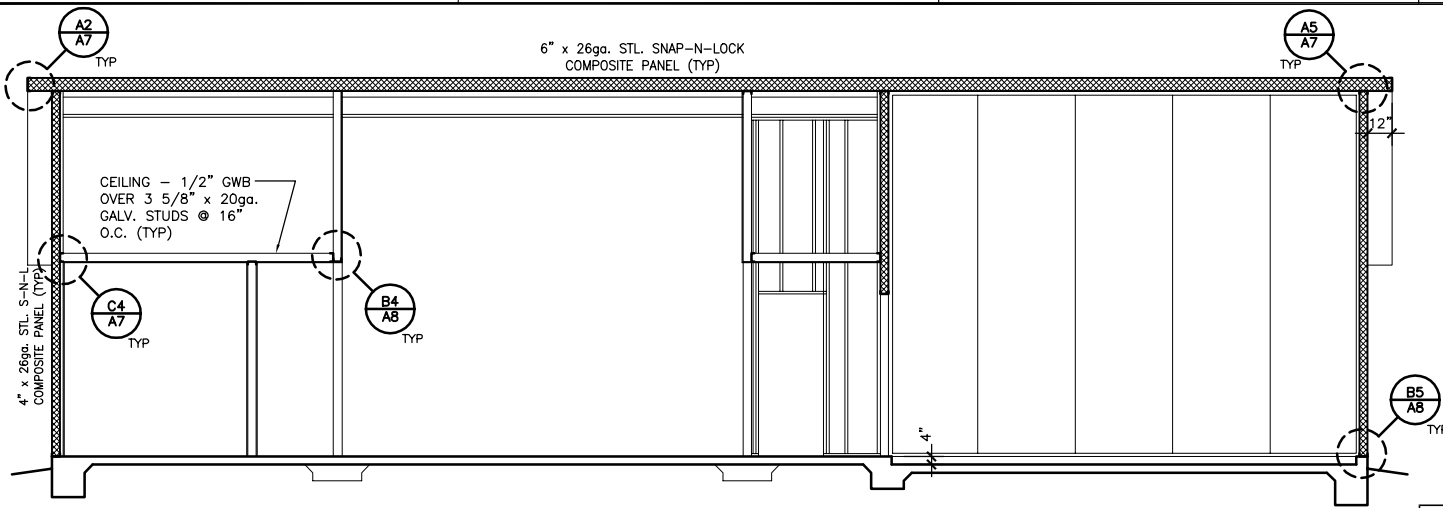
D4 LIGHT GAUGE STEEL POST TO SLAB
1 1/2" = 1'-0" PSTSLB17



D5 LIGHT GAUGE STEEL POST TO SLAB
1 1/2" = 1'-0" PSTSLB18

The Cameron Steel Snap-N-Lock Panel House
1909 SF. 1 Story, 3 Bedrm, 2 Bath, 2 Car Garage
Standard Model

Project No.
Date: 03-14-03
Drawn: JRD
Revised:

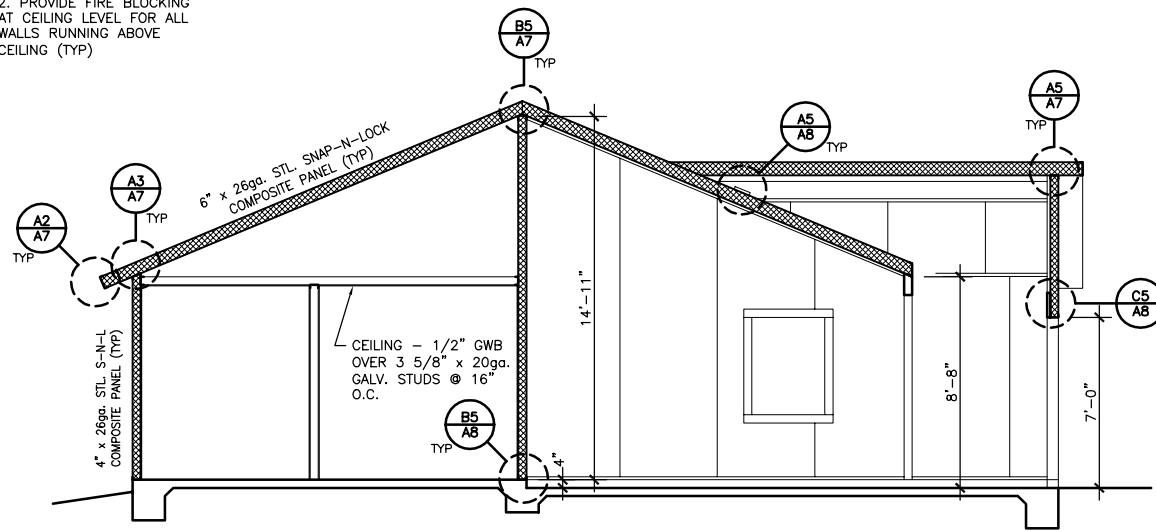


Section A

1/4" = 1'-0"

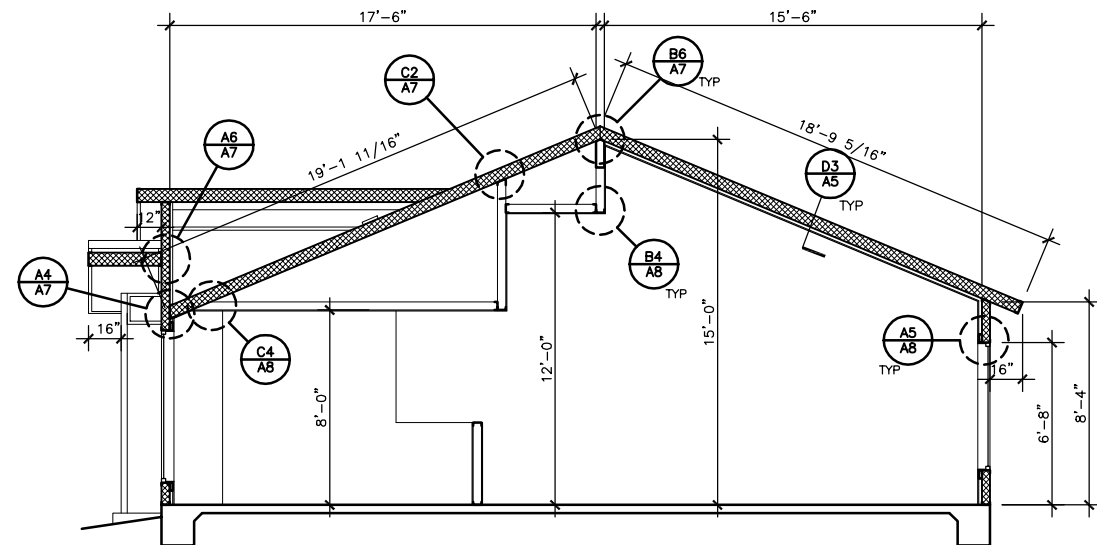
NOTES:
1. WALL & ROOF PANELS ARE LOAD BEARING & FUNCTION AS SHEAR DIAPHRAGMS

2. PROVIDE FIRE BLOCKING AT CEILING LEVEL FOR ALL WALLS RUNNING ABOVE CEILING (TYP)



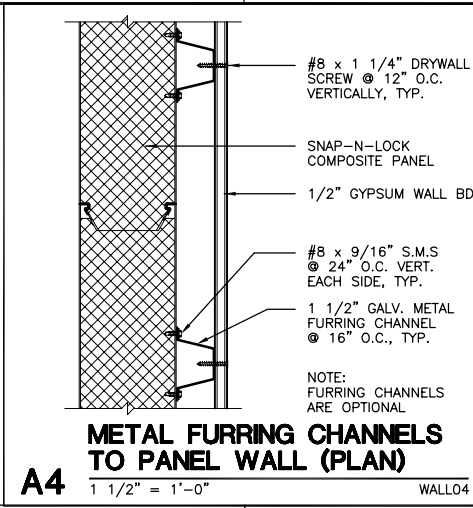
Section B

1/4" = 1'-0"



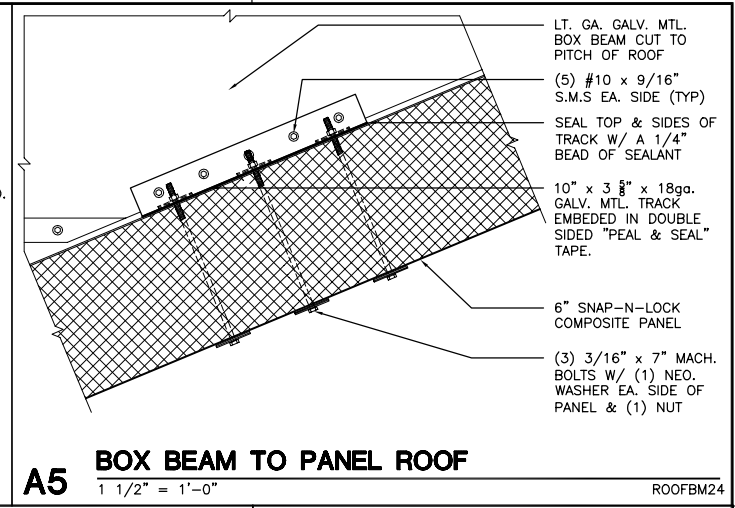
Section C

1/4" = 1'-0"



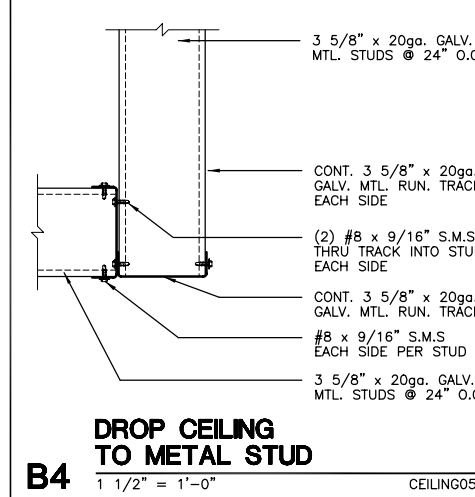
A4 METAL FURRING CHANNELS TO PANEL WALL (PLAN)

1 1/2" = 1'-0" WALL04



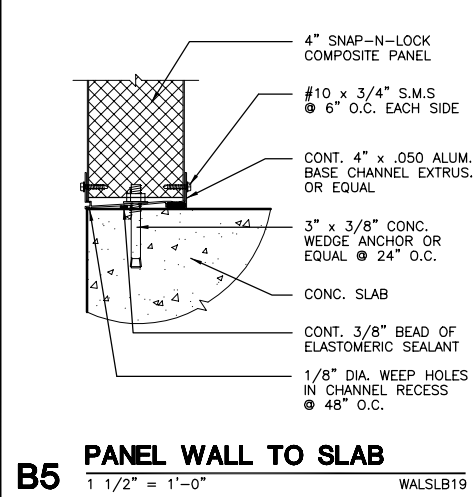
A5 BOX BEAM TO PANEL ROOF

1 1/2" = 1'-0" ROOFBM24



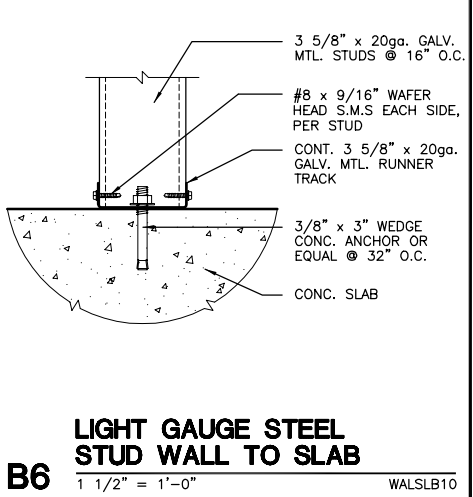
B4 DROP CEILING TO METAL STUD

1 1/2" = 1'-0" CEILING05



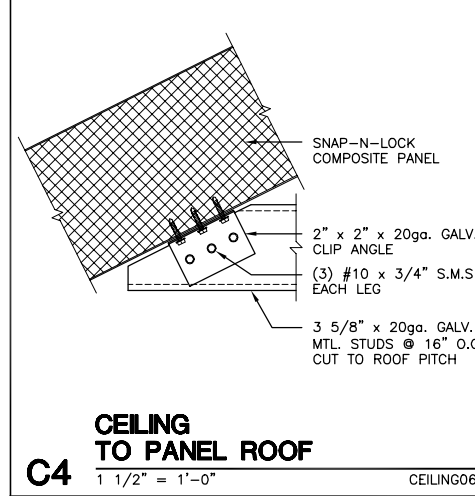
B5 PANEL WALL TO SLAB

1 1/2" = 1'-0" WALSLB19



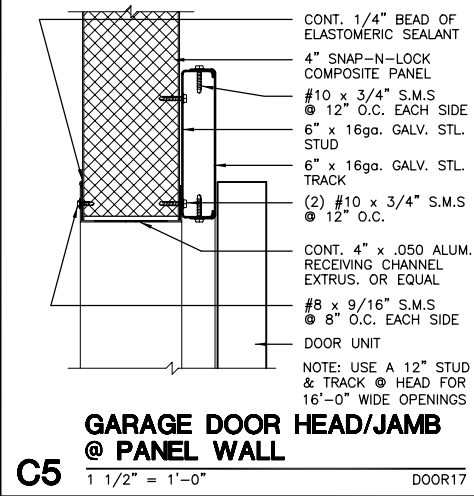
B6 LIGHT GAUGE STEEL STUD WALL TO SLAB

1 1/2" = 1'-0" WALSLB10



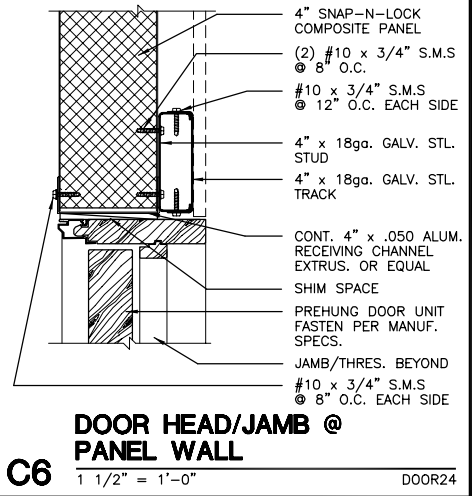
C4 CEILING TO PANEL ROOF

1 1/2" = 1'-0" CEILING06



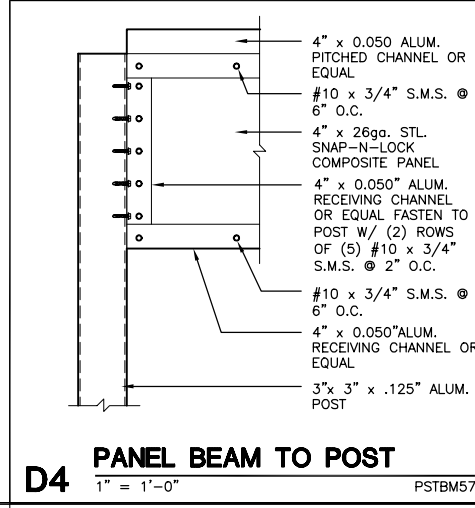
C5 GARAGE DOOR HEAD/JAMB @ PANEL WALL

1 1/2" = 1'-0" DOOR17



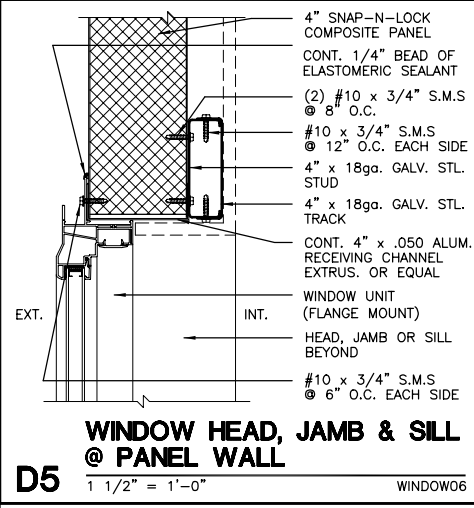
C6 DOOR HEAD/JAMB @ PANEL WALL

1 1/2" = 1'-0" DOOR24



D4 PANEL BEAM TO POST

1" = 1'-0" PSTBM57

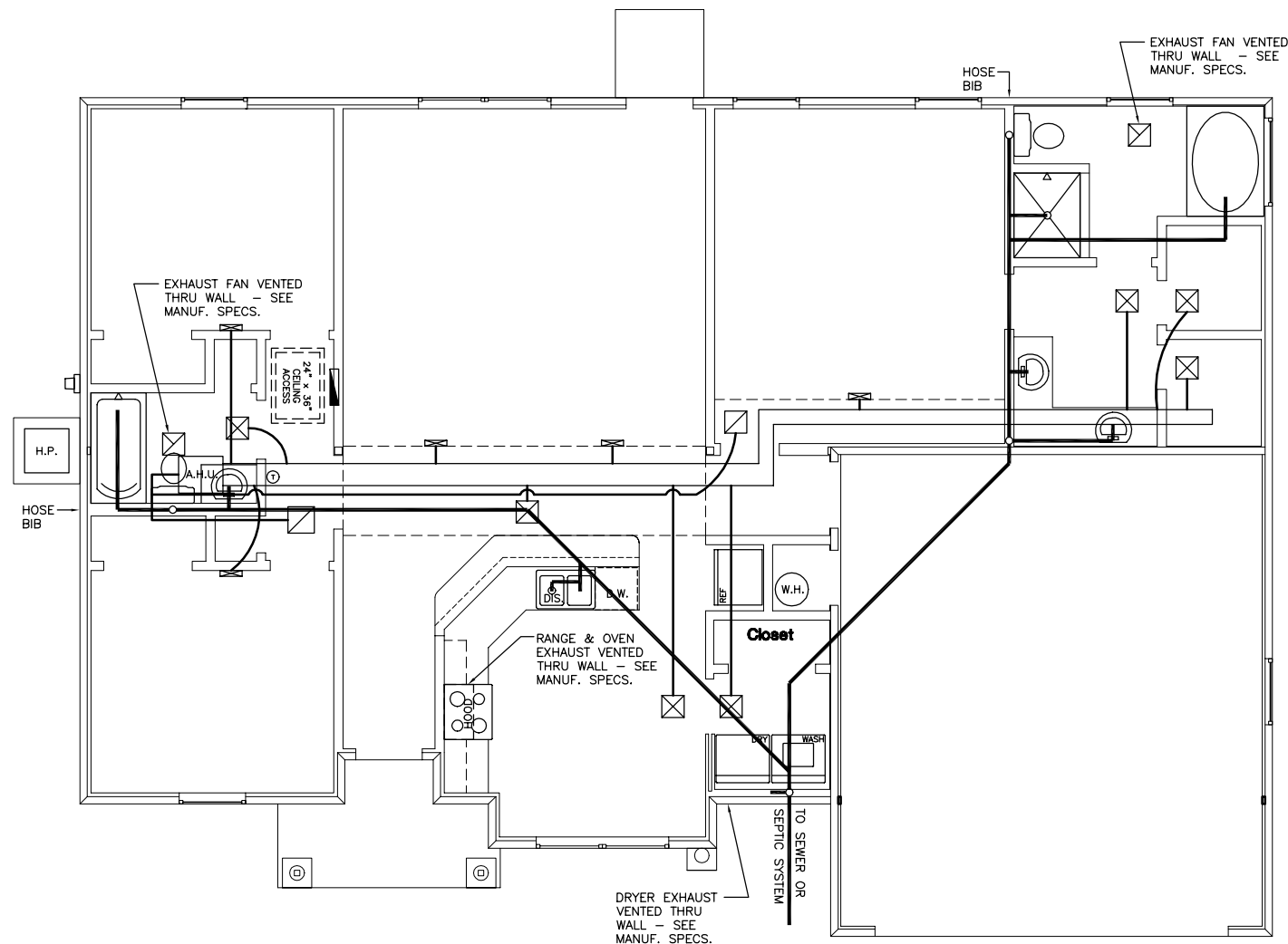


D5 WINDOW HEAD, JAMB & SILL @ PANEL WALL

1 1/2" = 1'-0" WINDOW06

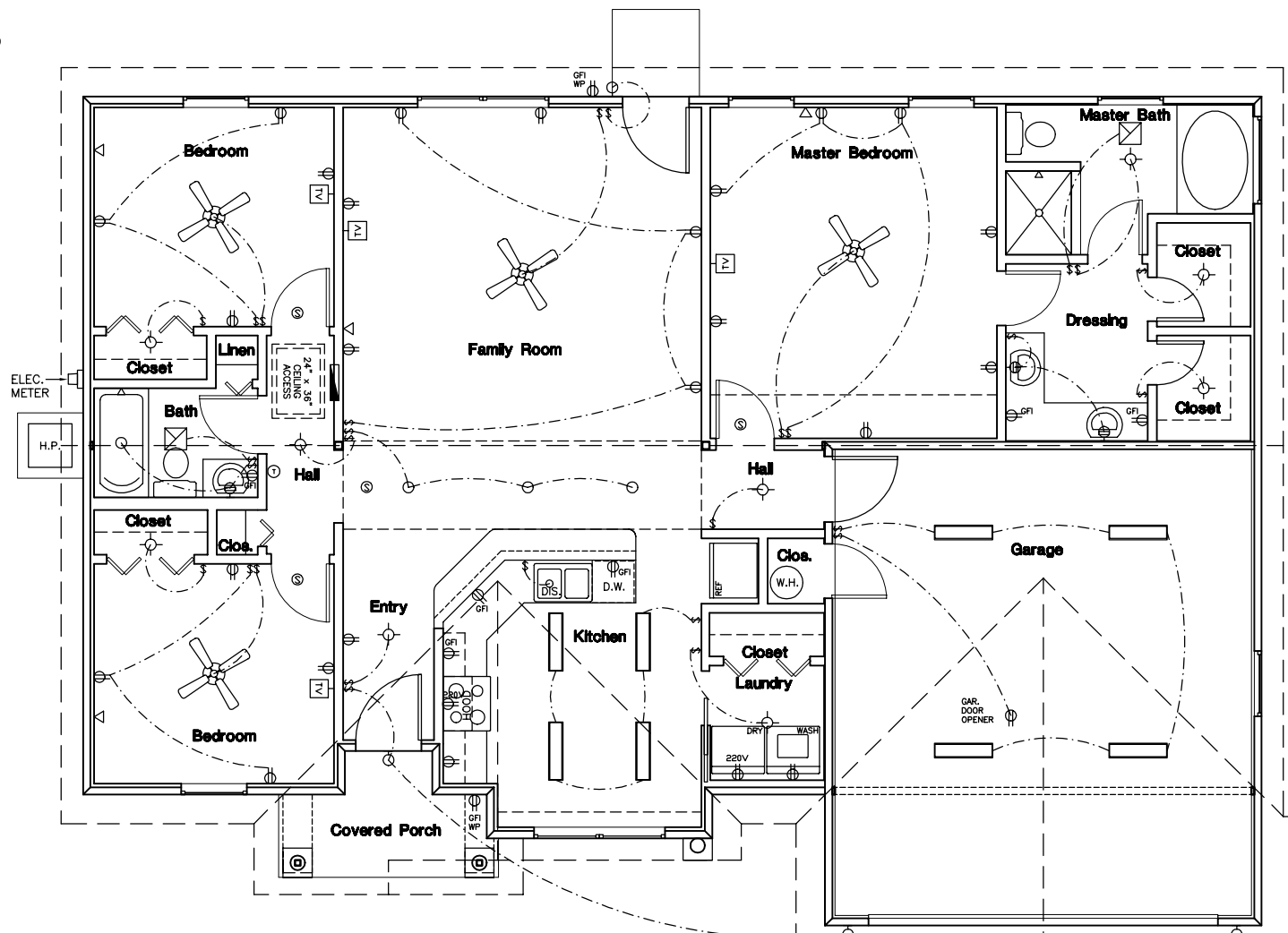
The Cameron Steel Snap-N-Lock Panel House
1909 SF. 1 Story, 3 Bedrm, 2 Bath, 2 Car Garage
Standard Model

Project No.
Date: 03-14-03
Drawn: JRD
Revised:



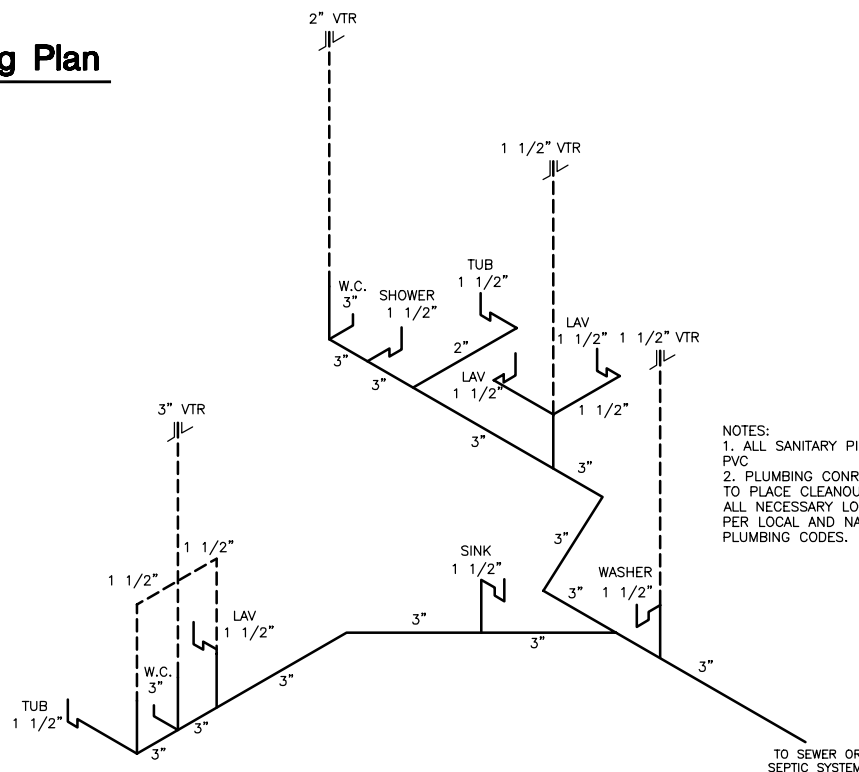
Mechanical/Plumbing Plan

1/4" = 1'-0"



Electrical Plan

1/4" = 1'-0"



Sanitary Riser Diagram

NOTES:
1. ALL SANITARY PIPING IS PVC.
2. PLUMBING CONTRACTOR TO PLACE CLEANOUTS AT ALL NECESSARY LOCATIONS PER LOCAL AND NATIONAL PLUMBING CODES.

MECHANICAL LEGEND

- CEILING ACCESS PANEL
- EXHAUST FAN
- RETURN AIR GRILLE
- SUPPLY AIR GRILLE
- WALL MOUNTED SUPPLY AIR GRILLE
- A.H.U. AIR HANDLING UNIT
- H.P. HEAT PUMP
- THERMOSTAT

ELECTRICAL CIRCUIT CALCS.

LIGHTING CIRCUITS	
1 CIRCUIT FOR BEDROOMS / BATHROOMS	= 2,400 W
1 CIRCUIT FOR LIVING RM. / DINING	= 2,400 W
1 CIRCUIT FOR KITCHEN / FAMILY RM.	= 2,400 W
1 CIRCUIT FOR GARAGE	= 2,400 W
TOTAL	9,600 W
SPECIAL APPLIANCE CIRCUITS	
1 CIRCUIT FOR KITCHEN	= 2,400 W
1 CIRCUIT FOR KITCHEN	= 2,400 W
1 CIRCUIT FOR FAMILY ROOM	= 2,400 W
1 CIRCUIT FOR GARAGE	= 2,400 W
TOTAL	9,600 W
INDIVIDUAL APPLIANCE CIRCUITS	
1 CIRCUIT FOR WATER HEATER	= 3,000 W
1 CIRCUIT FOR WASHER	= 700 W
1 CIRCUIT FOR DRYER	= 5,000 W
1 CIRCUIT FOR DISHWASHER	= 1,500 W
1 CIRCUIT FOR RANGE/OVEN	= 12,000 W
1 CIRCUIT FOR REFRIGERATOR	= 500 W
1 CIRCUIT FOR GARBAGE DISP.	= 600 W
TOTAL	23,300 W
HVAC CIRCUITS	
1 CIRCUIT FOR HVAC	= 4,500 W
TOTAL	4,500 W
GRAND TOTAL	47,000 W
DEMAND	
1st 10KW x 100%	= 10,000 W
HVAC EQUIP. x 100%	= 4,500 W
REMAINING 32.5KW x 40%	= 13,000 W
TOTAL	27,500 W
27,500 / 240VOLTS = 114.5AMPS 150AMP PANEL REQUIRED	

ELECTRICAL LEGEND

- TELEPHONE JACK
- THERMOSTAT
- T.V. JACK
- 220V RECEPTACLE
- EXHAUST FAN
- FLUORESCENT TUBE LIGHT FIXTURE
- WALL MOUNTED LIGHT FIXTURE
- RECESSED CEILING LIGHT FIXTURE
- TRACK LIGHTING
- CEILING MOUNTED LIGHT FIXTURE
- CEILING FAN
- WALL SWITCH
- WALL RECEPTACLE
- WEATHER PROOF WALL RECEPTACLE
- WALL RECEPTACLE W/ GROUND FAULT CIRCUIT INTERRUPT
- WALL RECEPTACLE W/ ARC FAULT CIRCUIT INTERRUPT
- SMOKE DETECTOR
- 150 AMP. ELEC. PNL. 110/240V, 1 PHASE

35 OL 34

The Cameron
Steel Snap-N-Lock Panel House
1909 SF. 1 Story, 3 Bedrm, 2 Bath, 2 Car Garage
Standard Model

Project No.
Date: 03-14-03
Drawn: JRD
Revised: