

Datasheet of 180° LED 2G11

(9W/15W/18W/22W)

Qualification



Features

- The led 2G11 tube can replace both Osram and Philip Dulux compact Fluorescent tube
- High lumen Epistar 2835 SMD.
- Aluminum housing and PCB is good for heat dissipation.
- Isolated driver, constant current, Rubycon capacitor making lamp work stably, no flicking.
- UL/cUL, CE, RoHS certificates
- 3 years warranty

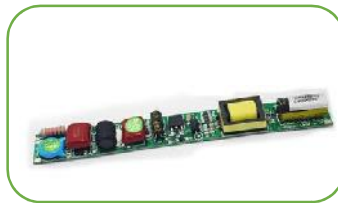
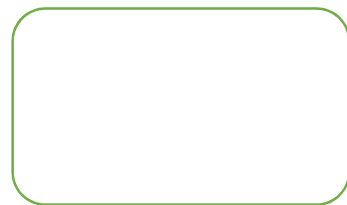
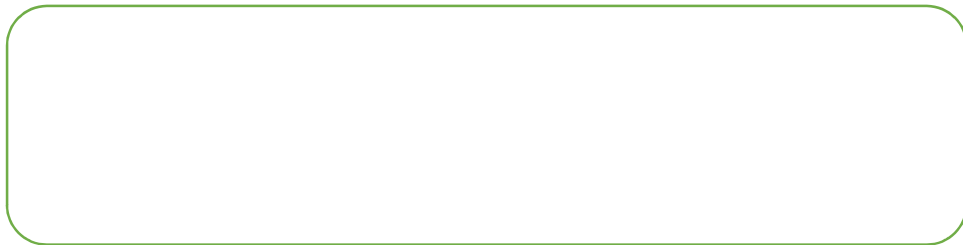
Replace



High quality and simple installation

Typically used in garden , commercial buildings, parking garages and etc...

Replacement of traditional halogen lamp



Specification

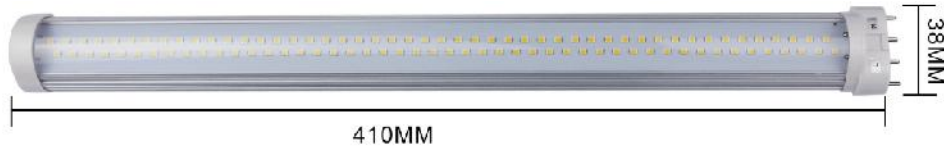
	ECO-2G11-9W	ECO-2G11-15W	ECO-2G11-18W	ECO-2G11-22W
Input Voltage	AC100-277V			
LED light source	Epistar 2835 SMD			
LED Qty	48pcs	76pcs	96pcs	148pcs
Rated Power	9W	15W	18W	22W
Luminous Flux	850LM	1350LM	1650LM	2200LM
Dimension	225*38*28mm	320*38*28mm	410*38*28mm	535*38*28mm
Net weight	180g	240g	240g	330g
Base	2G11/GY10/G23			
Lampshade	Clear/Milky			
Color Temperature	2700-6500K			
CRI	Ra>83			
Power Factor	>0.95			
Working Temperature	-20~+40°C			
Beam Angle	180°			
Lifespan	50.000hrs			



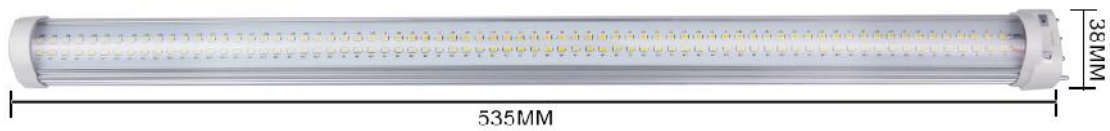
9W



15W

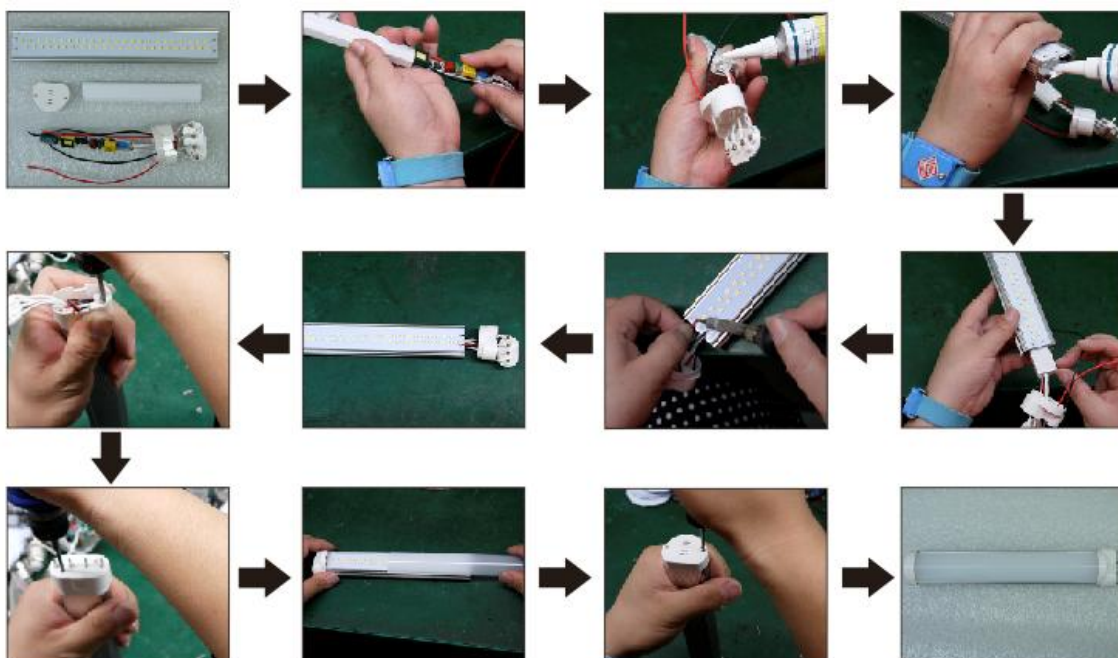


18W



22W

Production process

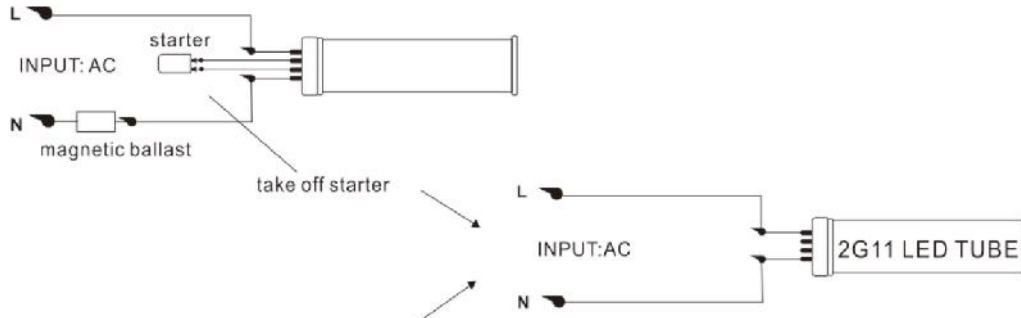


Aging

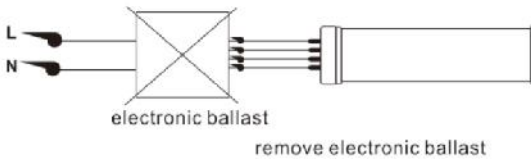


Installation Notes

(1) If magnetic ballast



(2) If electronic ballast, without starter



Replace

Wattage	CFL
9W	18W
15W	23W
18W	40W
22W	55W

Applications

It can be used in Residential Buildings, Home,Office, Meeting Room ,School, Library,Factory, Warehouse,Hotel, Casino,Parking Garage,Hospital,Commercial Center,Supermarket,Shopping mall,anywhere you want.

